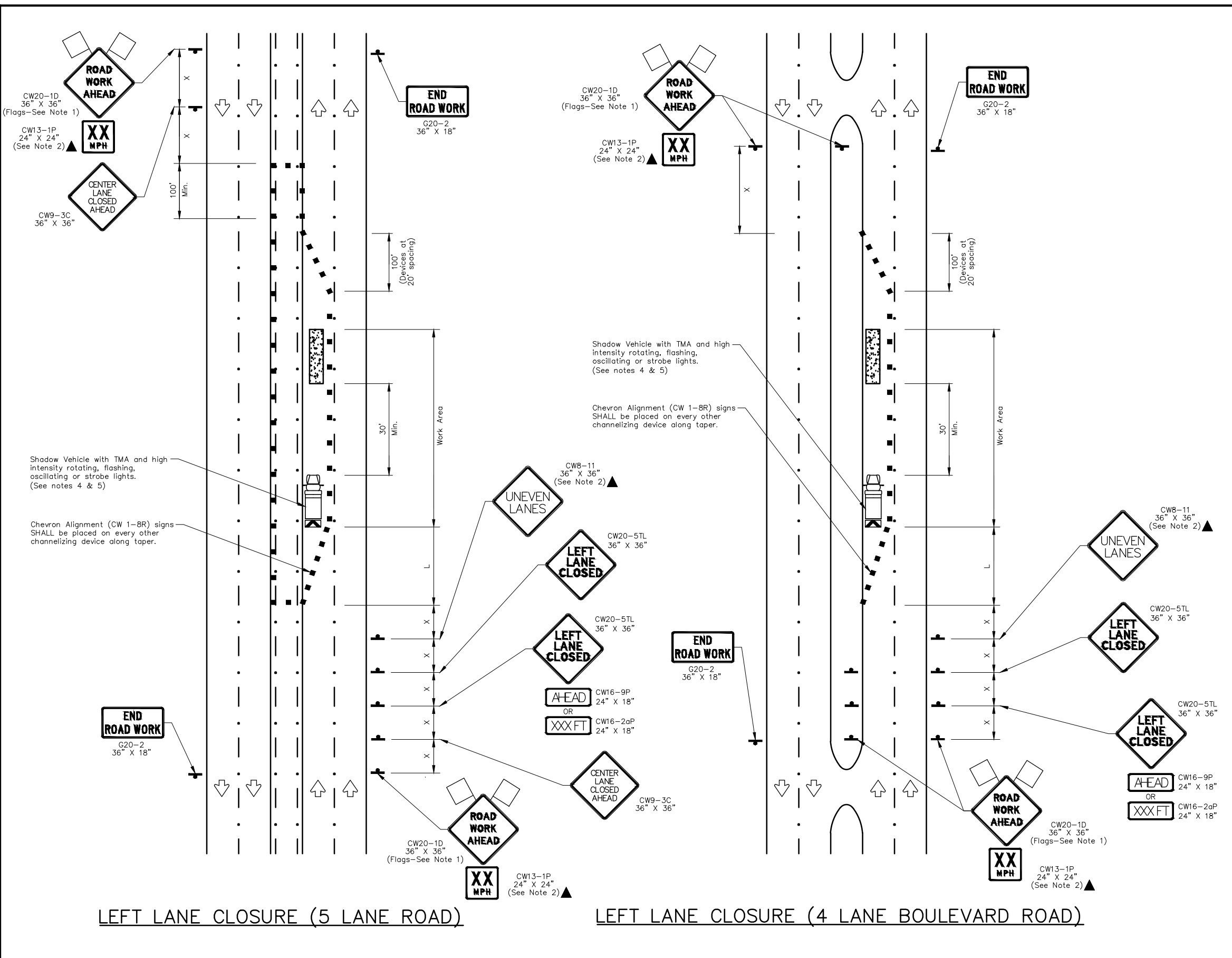


J:\Engineering Specs\Harris County Standard Traffic Drawings-Master file\8-18-2017 STANDARD TRAFFIC DRAWINGS\5-TRAFFIC CONTROL PLAN\TCP-LL.dwg



**TRAFFIC CONTROL PLAN SECTION SHALL BE COMPLETED BY ENGINEER**

ROADWAY	POSTED SPEED	TAPER LENGTH	SPACING CHANNELIZING DEVICES		SIGN SPACING	BUFFER SPACE
			TAPER	TANGENT		

LEGEND	
	Type 3 Barricade
	Heavy Work Vehicle
	Trailer Mounted Flashing Arrow Board
	Sign
	Flag
	Channelizing Devices
	Truck Mounted Attenuator (TMA)
	Portable Changeable Message Sign (PCMS)
	Traffic Flow
	Flagger

Posted Speed *	Formula	Minimum Desirable Taper Lengths "L"			Suggested Maximum Spacing of Channelizing Devices		Minimum Sign Spacing "X" Distance	Suggested Longitudinal Buffer Space "B"
		10' Offset	11' Offset	12' Offset	On a Taper	On a Tangent		
30	L = WS <sup>2</sup> / 60	150'	165'	180'	30'	60'	120'	90'
35		205'	225'	245'	35'	70'	160'	120'
40	L=WS	265'	295'	320'	40'	80'	240'	155'
45		450'	495'	540'	45'	90'	320'	195'
50	L=WS	500'	550'	600'	50'	100'	400'	240'
55		550'	605'	660'	55'	110'	500'	295'
60	L=WS	600'	660'	720'	60'	120'	600'	350'
65		650'	715'	780'	65'	130'	700'	410'
70	L=WS	700'	770'	840'	70'	140'	800'	475'
75		750'	825'	900'	75'	150'	900'	540'

\* Conventional Roads Only  
 \*\* Taper lengths have been rounded off.  
 L=Length of Taper(FT) W=Width of Offset(FT) S=Posted Speed(MPH)

**GENERAL NOTES**

- Flags attached to signs where shown are OPTIONAL.
- All traffic control devices illustrated are REQUIRED, except those denoted with the triangle symbol are OPTIONAL.
- Inactive work vehicles or other equipment should be parked near the right-of-way line and not parked on the paved shoulder.
- A Shadow Vehicle with a TMA should be used anytime it can be positioned 30 to 100 feet in advance of the area of crew exposure without adversely affecting the performance or quality of the work. If workers are no longer present but road or work conditions require the traffic control to remain in place, Type 3 Barricades or other channelizing devices may be substituted for the Shadow Vehicle and TMA.
- Additional Shadow Vehicles with TMAs may be positioned off the paved surface, next to those shown in order to protect wider work spaces.
- Contractor shall provide and install traffic control devices in conformance with part VI of Texas Manual on Uniform Traffic Control Devices (TMUTCD - Latest edition with revisions) during construction.
- No lanes shall be blocked from 7am to 9am and 4pm to 6:30pm Monday thru Friday.
- Off duty police officers/flaggers are required to direct traffic when applicable. If project is within 400 feet from a signalized intersection, the Contractor shall contact Harris County Engineering Department, Traffic Signal Maintenance at (713) 881-3210 five (5) days prior to the start of construction.

NO.	REVISIONS	DATE	NAME

**HARRIS COUNTY ENGINEERING DEPARTMENT**



**FOR INTERIM REVIEW ONLY**

DOCUMENT INCOMPLETE:  
 NOT INTENDED FOR CONSTRUCTION,  
 BIDDING, OR PERMIT PURPOSES

ENGINEER: NAME  
 P.E. SERIAL No. NUMBER  
 DATE: / /

PROJECT TITLE:		TRAFFIC STANDARD
SHEET DESCRIPTION:		TCP-LL
DRAWN BY:	TRAFFIC CONTROL PLAN	DATE:
BSH	(LEFT LANE CLOSURE)	8/18/17
CK'D BY:	SCALE:	SHEET NO:
BSH	NONE	