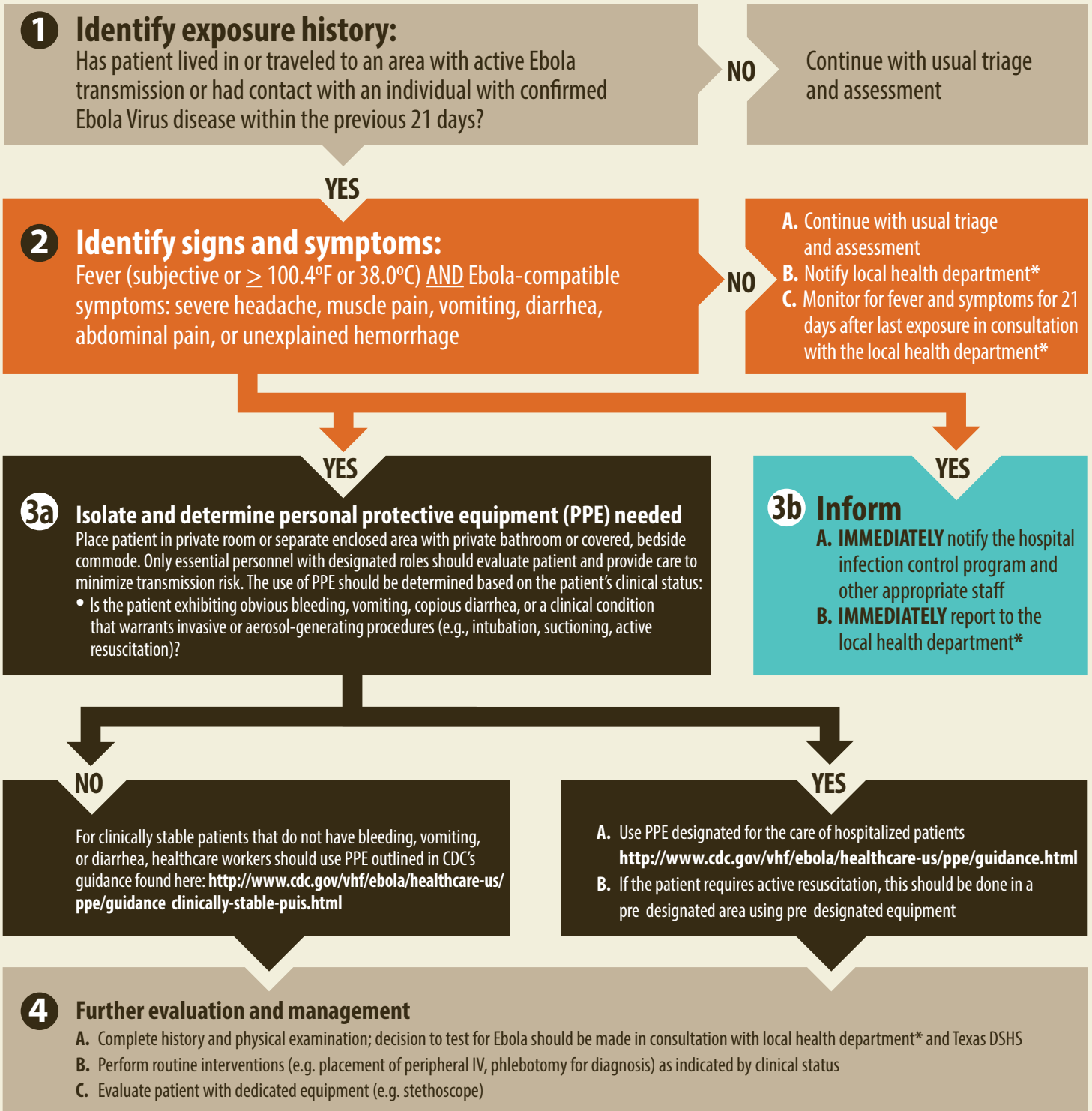


# Identify, Isolate, Inform: Emergency Department Evaluation and Management of Patients Under Investigation for Ebola Virus Disease



Adapted from algorithm developed by CDC in collaboration with American College of Emergency Physicians and Emergency Nursing Association

\* Find your Local Health Department: <http://www.dshs.texas.gov/idcu/investigation/conditions/contacts/>



TEXAS  
Health and Human  
Services

Texas Department of State  
Health Services