

# Job Aid for Clinicians

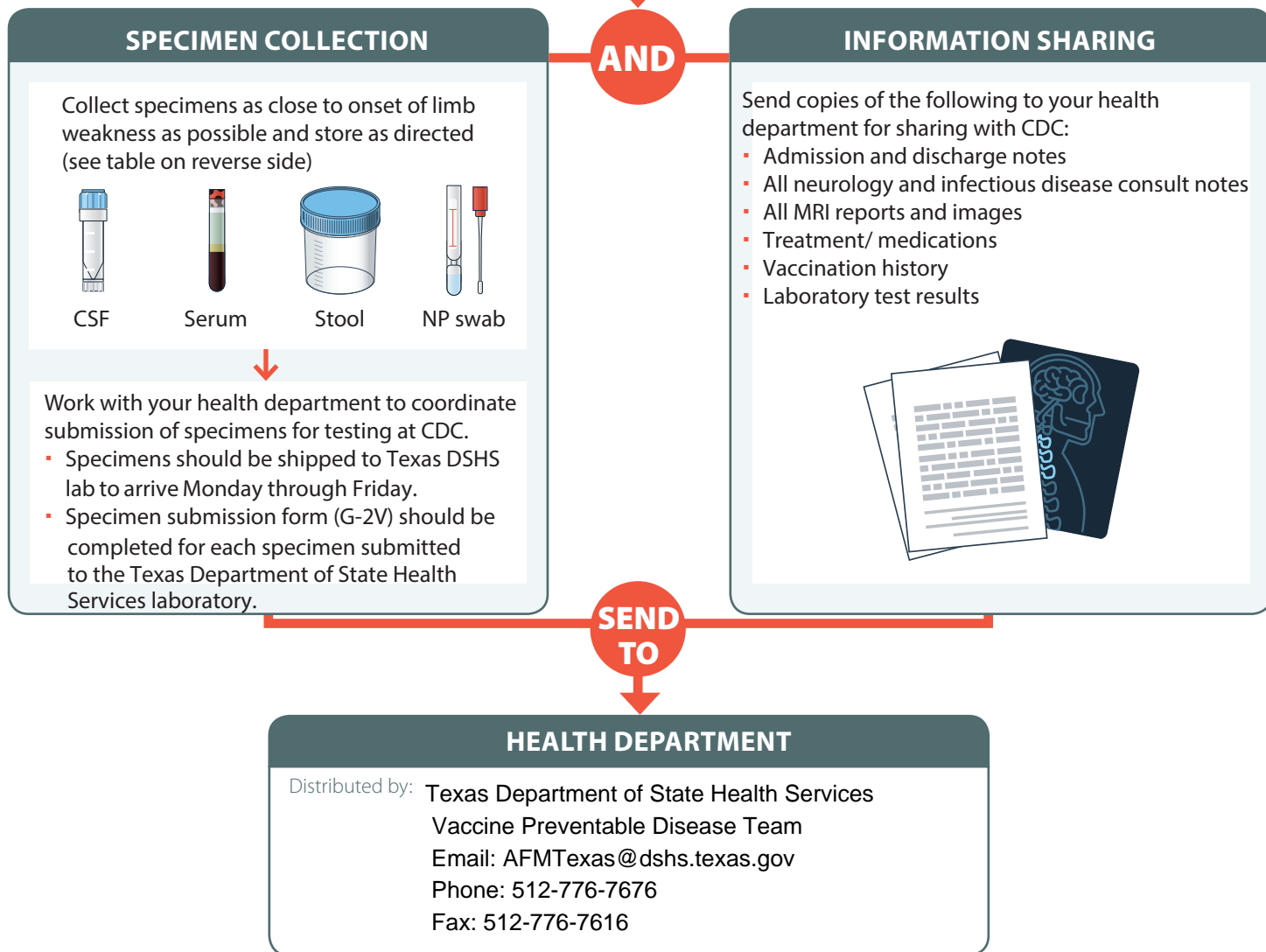
How to send information about a suspected AFM case to the health department

1

**Identify suspected case of AFM: patient with onset of acute flaccid limb weakness**

2

**Contact your health department or DSHS when you identify a suspected case of AFM.**




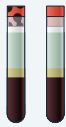

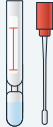
3

**Provider completes [AFM Patient Summary Form](#), compiles medical records, and sends information to Texas DSHS or local health department. Patient will be classified by national AFM experts.**

4

**After expert review, patient classification is given back to health department and relayed to clinician by health department.**

### Specimens to collect and send to CDC for testing for suspected AFM cases

SAMPLE	AMOUNT	TUBE TYPE	PROCESSING	STORAGE	SHIPPING
CSF	1mL (collect at same time or within 24hrs of serum)	Cryovial 	Spun and CSF removed to cryovial	Freeze at -20°C	Ship on dry ice
Serum	≥0.4mL (collect at same time or within 24 hours of CSF)	Tiger/red top 	Spun and serum removed to tiger/red top.	Freeze at -20°C	Ship on dry ice
Stool	≥1 gram (2 samples collected 24hrs apart)	Sterile container 	n/a	Freeze at -20°C	Ship on dry ice. Rectal swabs should not be sent in place of stool.
Respiratory (NP)/ Oropharyngeal (OP) swab	1ml (minimum amount)	n/a 	Store in viral transport medium	Freeze at -20°C	Ship on dry ice

**Coordinate with your health department to send information about suspected AFM cases and ship specimens to CDC.**

[www.cdc.gov/acute-flaccid-myelitis](http://www.cdc.gov/acute-flaccid-myelitis)

This job aid was developed by the U.S. Centers for Disease Control and Prevention (CDC).

Edited by Texas Department of State Health Services Oct 2018

Distributed by: Texas Department of State Health Services  
 Vaccine Preventable Disease Team  
 Email: AFMTexas@dshs.texas.gov  
 Phone: 512-776-7676  
 Fax: 512-776-7616