

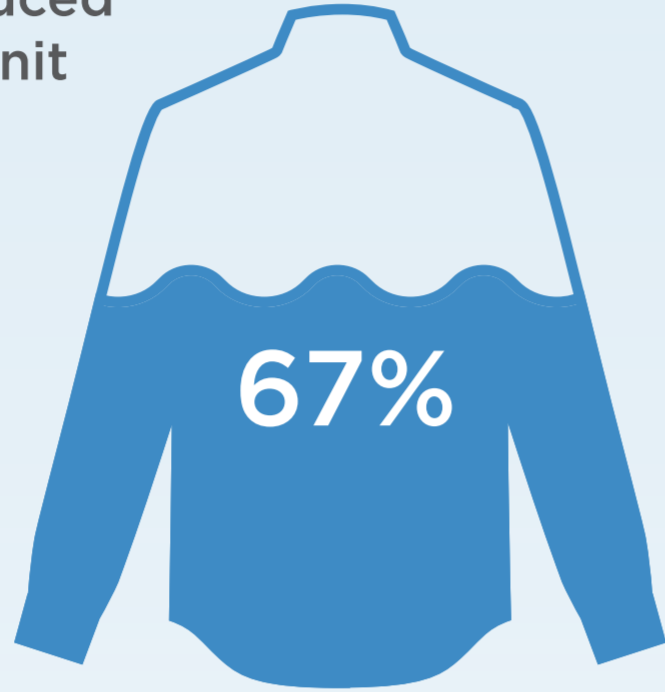


Planet



Water Consumption

Since 2005, we have reduced water consumption per unit of production by



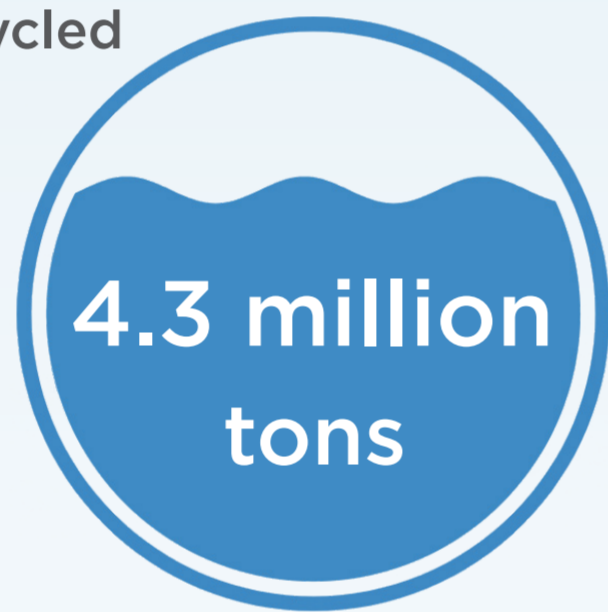
Wastewater Discharge (COD)*

Esquel treats our wastewater to fulfill government requirements before discharge.



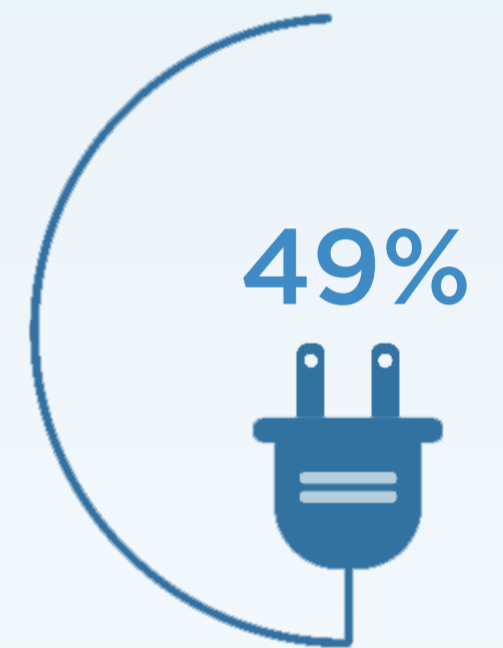
Wastewater Treatment*

In 2018, we reused and recycled



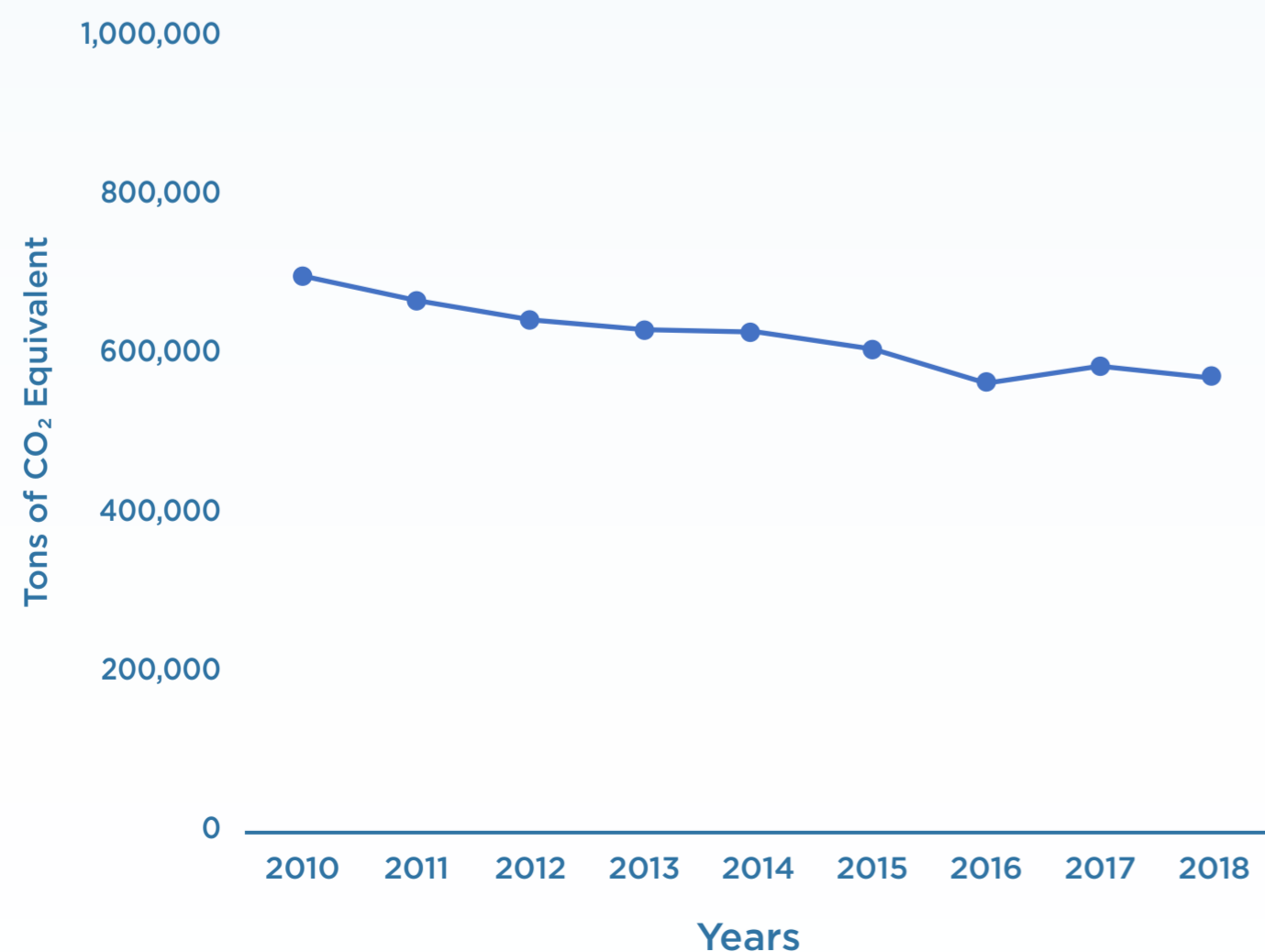
Energy Consumption

Since 2005, we have reduced energy consumption per unit of production by



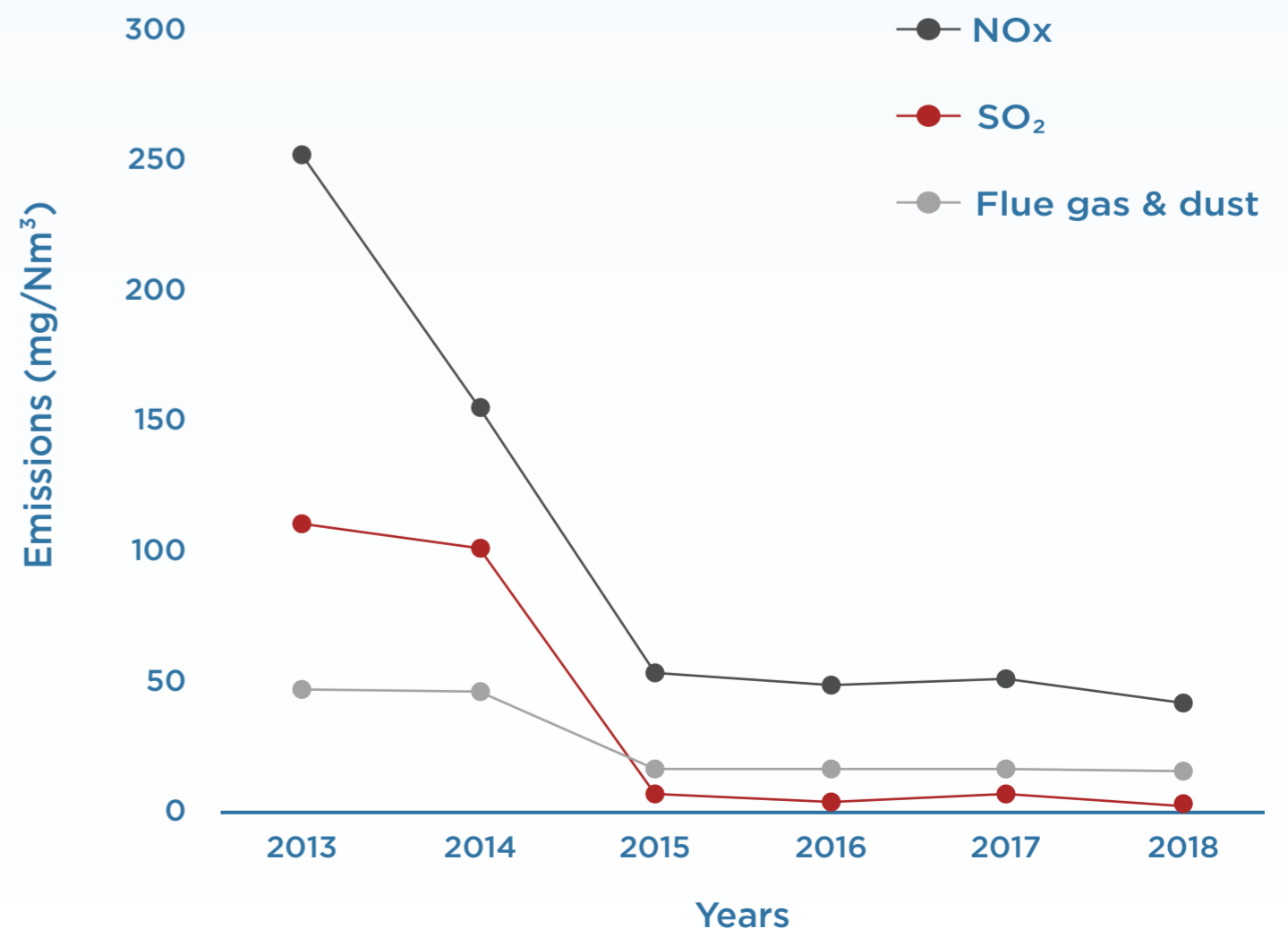
Greenhouse Gas (GHG) Emissions*

We continuously work to lower our GHG emissions.



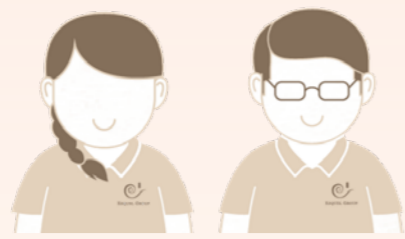
Non-Greenhouse Gas (non-GHG) Emissions*

We continuously work to lower our non-GHG emissions.



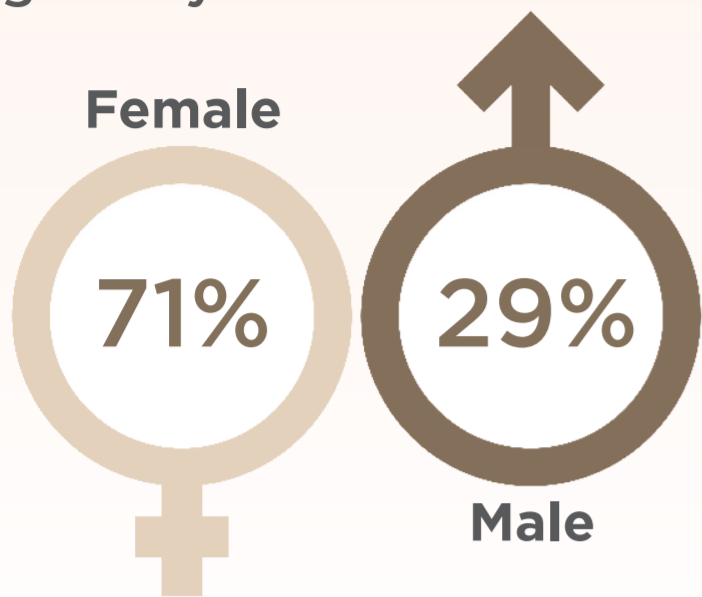
*This data is from our Gaoming operations.

People



Gender Ratio

Esquel has over **55,000** employees globally.



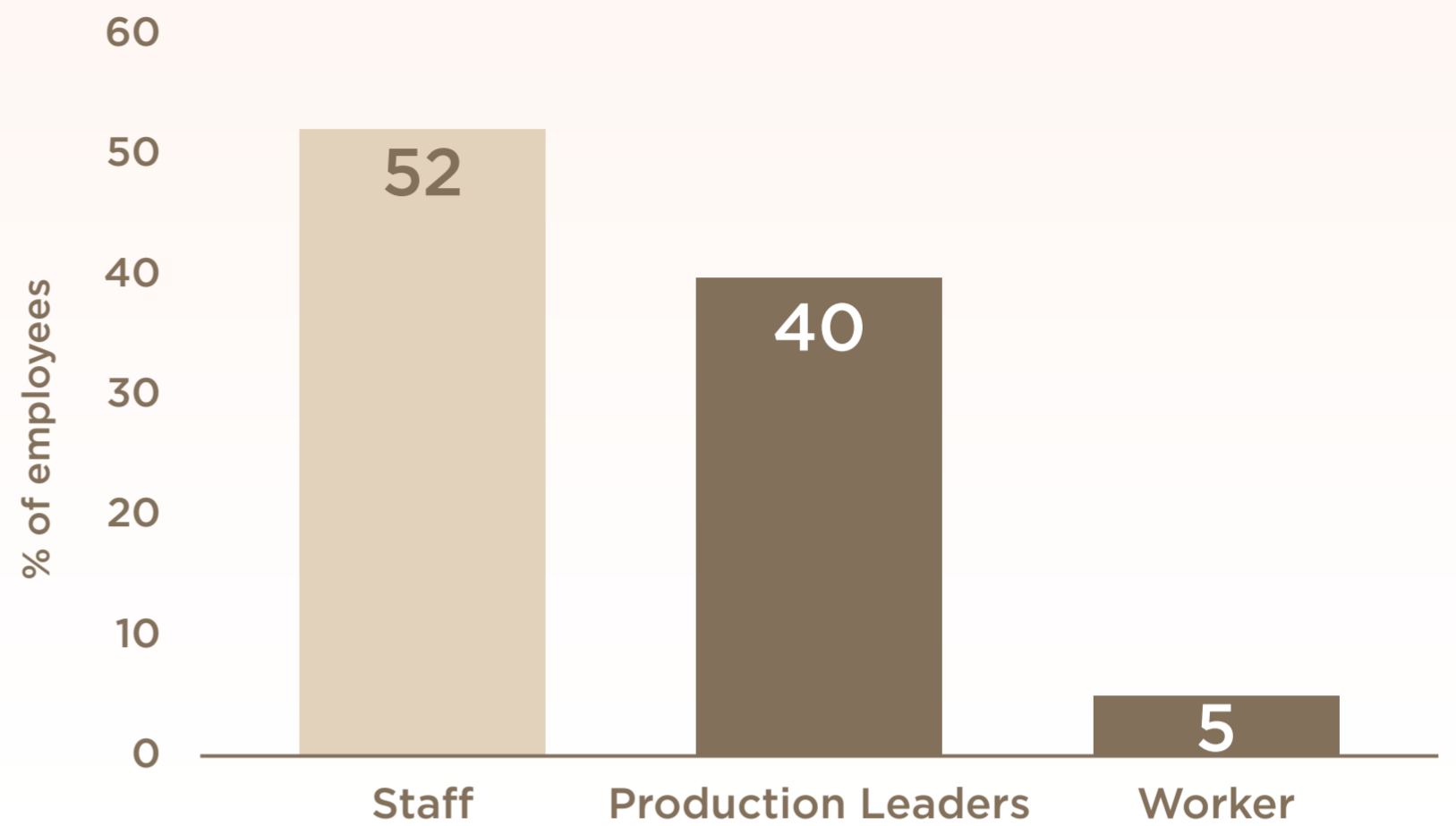
Employee Mobility

Number of internal movements: **1,088**

Average tenure: **8 years**

Education Level

The percentage of employees with diploma or above at our global garment manufacturing facilities.



Product



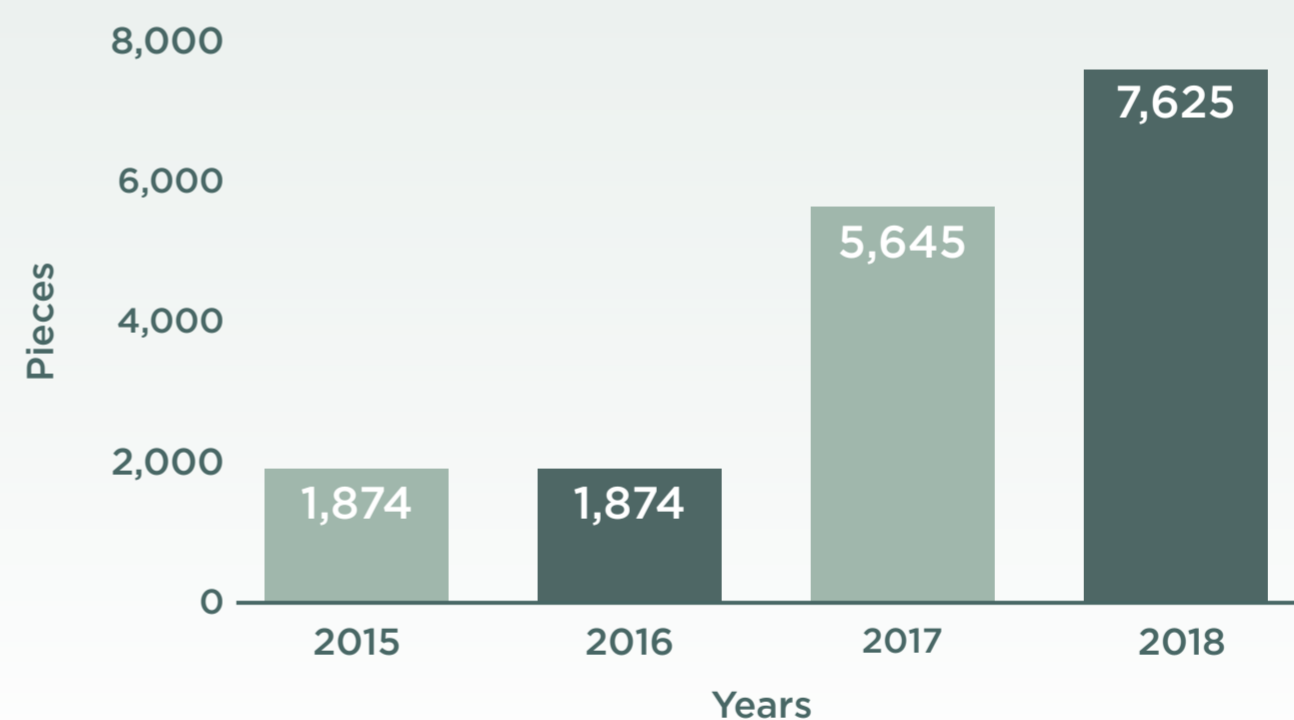
Patents

As of 2018, we hold **1,271** Patents.

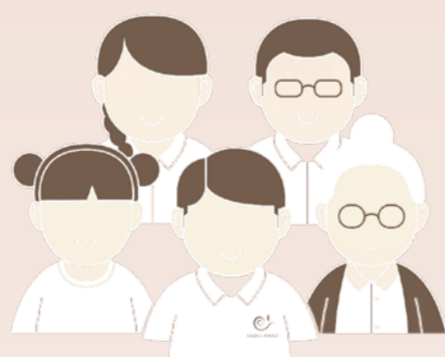
Virtual Samples

Building our 3D virtual sampling technology in partnership with our clients, we can work together more efficiently.

In 2018, we built **7,625** virtual samples in collaboration with our clients.



Community



Esquel-Y.L. Yang Education Foundation

Vision Screening Program

Since 2012

8,124 pairs of eyes examined.

Hongzhi Students Program

Since 2011

1,313 students sponsored.

Summer Learning Camp

Since 2007

5,035 students taught.

Esquel-China Light & Power Green Studio

Since 2011

140,000 students engaged.