



UTEX INDUSTRIES, INC.
 Taking Sealing Technology Beyond Tomorrow
 ISO 9001 Certified
 www.utexind.com

PRODUCT BULLETIN

UPB 86
 Rev

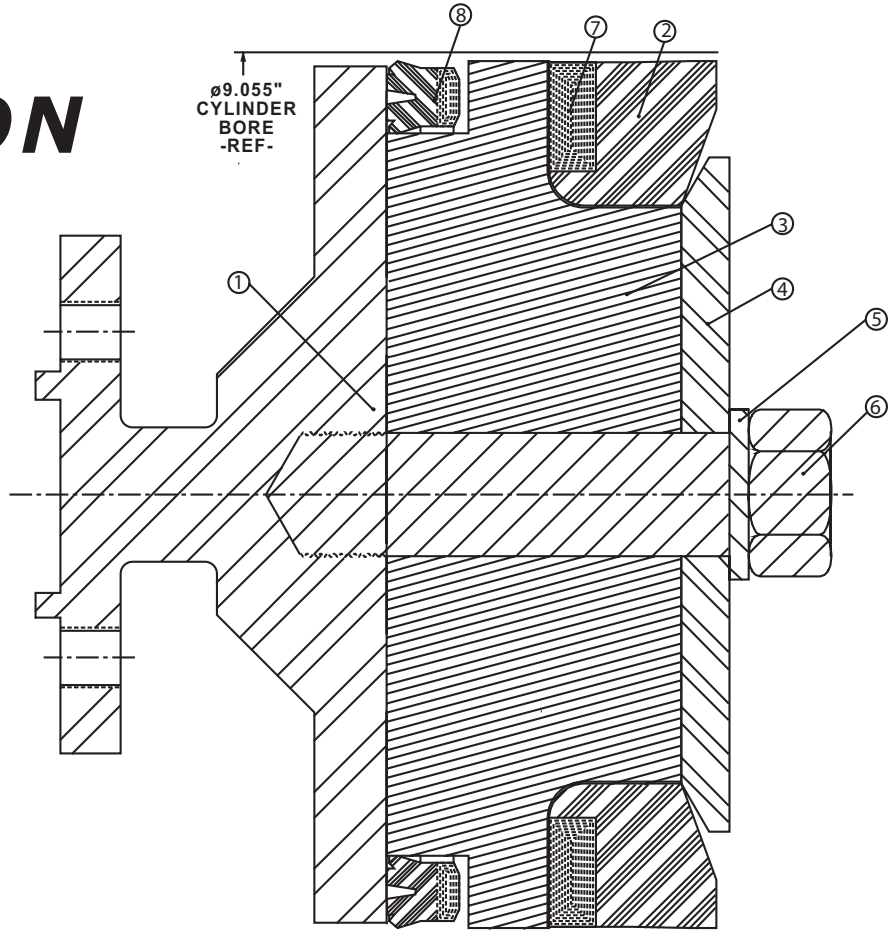
January 14, 2006
 November 14, 2006

CONCRETE DUAL PISTON

- ⇒ **High Performance**
- ⇒ **Low Run Cost**

**Cost Savings Per Run
 Dual Piston vs. Conventional:**
 (Based on reusing assembly hardware)

- 3 Runs = 21%**
- 4 Runs = 29%**
- 5 Runs = 35%**



ITEM	DESCRIPTION
1	PISTON BODY CONNECTION HEAD
2	PISTON RUBBER
3	PISTON SPACER BODY DETAIL
4	PISTON CAP DETAIL
5	1-1/4" LOCK WASHER, HIGH STRENGTH
6	CAP SCREW
7	HARD FABRIC COMPOSITE HEEL
8	"WQ" WIPER SEAL

- ⇒ Uses replaceable pistons made of high-performance rubber composite dual materials.
- ⇒ Available for 230mm PumpStar, Putzmeister and Schwing Pumps.