

**STANDING COMMITTEES**

Academic and Student Affairs Committee

Student-Led Community Partnerships at UW Bothell: Supplier Diversity Program and United Way Benefits Hub

INFORMATION

This item is for information only.

BACKGROUND

As the chair of the Academic and Student Affairs Committee in September 2017, Regent Joel Benoliel requested that each committee meeting begin with a featured student experience. This month, UW Bothell would like to feature student experiences in leading two community-engaged partnerships: the Supplier Diversity Program and the United Way Benefits Hub.

*Attachments*

1. Supplier Diversity Program
2. United Way Benefits Hub – Mission, Vision, and Services Summary
3. Health & Wellness Resource Center Data, October 1, 2018 - February 7, 2019, United Way Benefits Hub
4. Presenters' Biographical Information

# **Supplier Diversity Program**

**Board of Regents  
March 14, 2019**

---

**Presenter: Rabia Ramzan**



# Overview



Supplier Diversity focuses on providing opportunities for women, veteran, minority owned, small and local businesses to do work with UW Bothell (UWB). We educate and support our UWB community members to spend dollars within the local community, to contribute to job creation and spur growth in our local economy.

# Benefits

---

- > Educates UWB community about importance of spend with our diverse supplier community
- > Emphasizes external community involvement with UWB
- > Aligns with Regent Policy No. 16, Statement of Business Equity for the University of Washington
- > Stimulates economic growth from within our community
- > Introduces new products and services to promote innovation
- > Offers competitive price and service ranges between new and existing potential vendors



# Milestones

---

## Winter and Spring 2018

- > Research and Development
- > Internal Meetings
  - UW Bothell Administration
  - UWB Admin Council
  - UW Business Diversity Program
  - UW Procurement Services
- > External Outreach
  - Business Convention
  - Individual Vendors
  - Local City Chambers

## Summer 2018

- > Supplier Diversity Program website
- > Supplier Orientation at UW Bothell

## Fall 2018

- > Diverse Supplier Fair at UW Bothell



# Metrics

---

Data is not fully reliable, but getting better and more targeted. Procurement card spend data unavailable.

Some of UWB spend is counted within UWS spend (e.g. POD consultants, some Facilities Services spend, etc.)

- > FY16 data showed about 0.5% diverse spend at UW Bothell
- > FY 18 data showed improvement to 1% diverse spend as a campus for FY18
- > Current FY19 spend is 1.6%
- > Current goal: 2% diverse spend FY19



# Engaging Campus: Keeney's Supplies (Woman Owned Business)

---

- > FY17 Office Supplies Analysis at 12% diverse spend
- > FY18 at 21.1% diverse spend
- > Meet and Greet in April
- > Participated in Supplier Orientation in August at UW Bothell
- > Participated in Diverse Supplier Fair October 2018



# Other Examples

---

- > School of STEM is working on increasing diverse spend by targeting lab equipment suppliers
- > A wider variety of caterers included on caterer list on website, and many units targeting use.





# Woodinville Chamber Student of the Month

---

Recognized by the  
Woodinville City Chamber  
as Student of the Month  
for September 2018



# Next Steps

---

## Spring – Summer 2019

- > Catering Fair
  - 17 caterers at Mobius Hall
  - Partner with Cascadia College
- > Continue to raise awareness about program
- > Expand UW Bothell's commitment to supplier diversity
- > Improve spend percentage



# What I'm Learning

---

## > Campus Operations

- Impacts of growth and changes in culture
- Impact of student involvement
- Procurement processes

## > External Relations

- Relationships with City Chambers
- Tools for small businesses





# ATTACHMENT 2 HEALTH AND WELLNESS RESOURCE CENTER

October 2018 - February 2019



## VISION

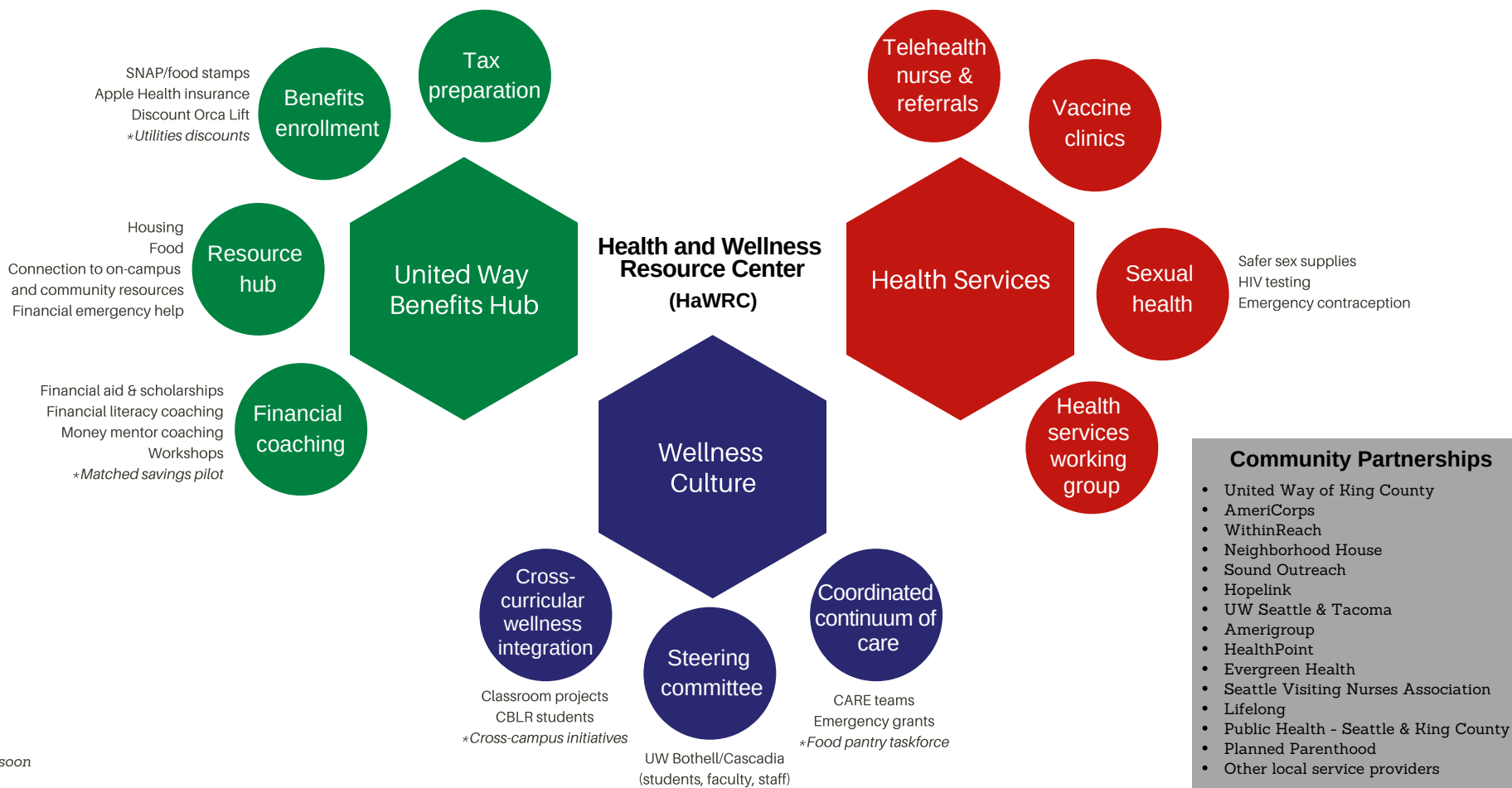
Advancing health equity for the UW Bothell and Cascadia College community, so all students are supported in their holistic wellbeing and to persist through college.

## MISSION

A one-stop hub connecting students with on-campus and community resources to help you thrive.

## YEAR 1 GOALS

1. Use a health equity lens to address the greatest student needs
2. Increase awareness of the HaWRC/Benefits Hub
3. Increase student access to wrap-around support services
4. Increase student access to health services
5. Promote a culture shift that fosters collaboration to advance student wellbeing
6. Foster the sustainability and advancement of the HaWRC/Benefits Hub





# HEALTH & WELLNESS RESOURCE CENTER DATA



OCTOBER 1, 2018 – FEBRUARY 7, 2019

## UNITED WAY BENEFITS HUB

### YEAR 1 SERVICES

**Individual, In-person Financial Coaching & Education**

- FAFSA/WASFA & scholarship assistance
- Creating a budget, Consumer debt consolidation

**Homelessness Prevention & Housing Navigation**

**Public Benefits Access**

- SNAP, utility assistance, health insurance enrollment, Orca Lift cards, childcare assistance, WIC, etc.

**Student Emergency Funds Awards Of Up To \$1,000 Per Quarter**

- Matched program: UWB pays 1/4, United Way King County pays 3/4 of Award

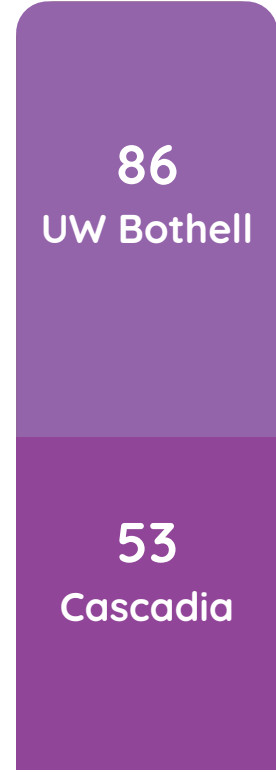
**Tax Preparation Site**

- Students & community members who make less than \$66,000 are eligible for free tax preparation

**Matched Savings Program**

- United Way King County & Washington State Employees Credit Union

### APPOINTMENTS 139

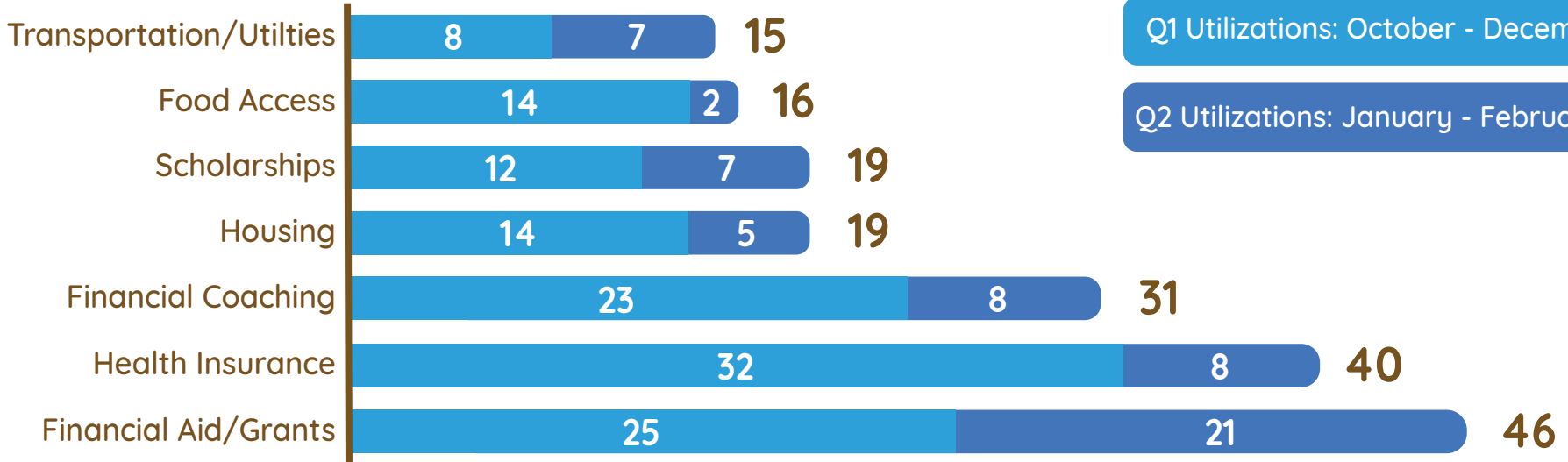


### INDIVIDUALS 111



### RESOURCE UTILIZATION

#### Services Provided

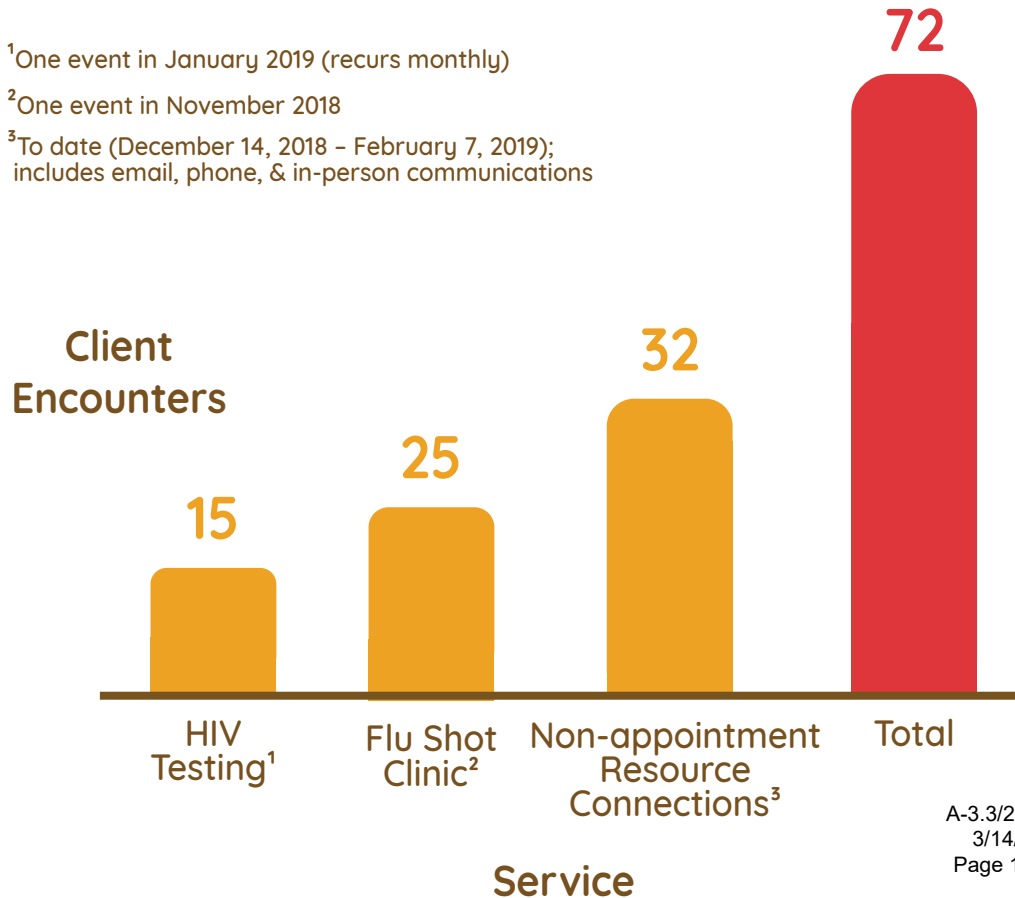


Q1 Utilizations: October - December 2018

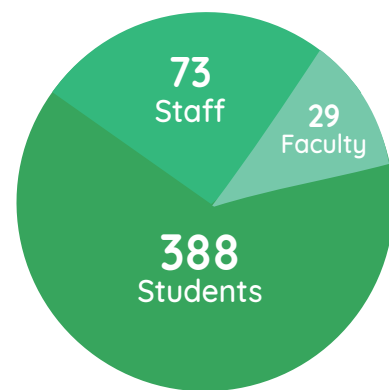
Q2 Utilizations: January - February 7, 2019

### OTHER STUDENT ENCOUNTERS (NON-APPOINTMENT)

<sup>1</sup>One event in January 2019 (recurs monthly)  
<sup>2</sup>One event in November 2018  
<sup>3</sup>To date (December 14, 2018 - February 7, 2019); includes email, phone, & in-person communications

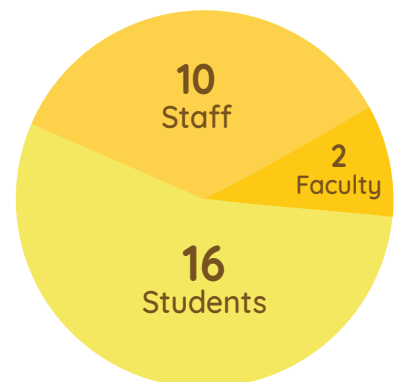


### OUTREACH PRESENTATIONS PROVIDED



490 Individuals (Estimated)

28 Presentations



## *Presenters' Biographical Information*



### **Rabia Ramzan**

#### **Senior, Business Administration, and Supplier Diversity Program Specialist**

Rabia Ramzan is a Senior at University of Washington Bothell majoring in Business Administration with a concentration in Marketing and Finance. She joined UW Bothell's Planning & Administration division in 2018. She has been instrumental in developing the UW Bothell's Supplier Diversity Program. She works to build partnerships with small, minority, and women-owned veteran and diverse businesses; collaborates with the UW Business Diversity

Program; and provides education and tools to assist the campus in utilizing diverse suppliers. She enjoys helping and supporting the local community.

She looks forward to graduating this Spring and becoming a UW Alumna!



### **Phuoc D. Nguyen, B.S.**

#### **WithinReach AmeriCorps Public Assistance Service Provider for the United Way Benefits Hub at UW Bothell**

Phuoc Nguyen is an AmeriCorps member serving at WithinReach, a non-profit organization that connects the Washington community to public resources. He is a first-generation immigrant as well as a first-generation college student. He graduated from UW Bothell in 2018 with a Bachelor of Science in Biology and Magna Cum Laude

honors.

As an outreach specialist, he serves the community by going to food banks, community clinic, DSHS offices and college sites to connect people to the resources they need to live healthier lives. He is trained to enroll people for Basic food, Washington Apple Health and ORCA LIFT bus passes. Phuoc has a passion for helping the underserved and he will begin medical school at Des Moines University in the fall.



## **Shugla Kakar**

### **Student, University of Washington Bothell**

Shugla Kakar is a third-year pre-med student double majoring in biology and Gender, Women, and Sexuality Studies.

Shugla was born on May 01, 1997 in Pakistan and moved to the United States in 2011. At the University of Washington Bothell Shugla has become a student leader, a mentor, a community organizer, and a role model. She has been a social change agent advocating for the rights and respect of all students. She is dedicated to supporting her community, and is relentless in my fight for inclusion, respect, and access to excellence in higher education for all students.



## **Rosemary Simmons, Ph.D.**

### **Director of Counseling Services, UW Bothell**

Dr. Simmons is the Director of the UW Bothell Counseling Center. She joined UW Bothell in July of 2014.

During her tenure at UW Bothell she has had the privilege of starting several exciting programs to more fully address the needs of UW Bothell students. She initiated a doctoral practicum training program in 2015-2016 providing a psychology clinical placement for 2–3 doctoral candidates from local Universities to provide 20 hours per week of direct clinical service to UW Bothell students. She co-chaired the Student Diversity Center Implementation Team of students, staff and faculty which worked diligently during 2016-2017, culminating in the May 2017 opening of the Student Diversity Center.

This past year, she has worked closely with UW Bothell students and Cascadia College to actualize the Health and Wellness Resource Center and worked collaboratively with UW Bothell Advancement to create partnerships with community based organizations including United Way of King County Benefits Hub. As a first-generation, Pell Grant recipient student herself she knows first-hand the power of education in changing lives.