



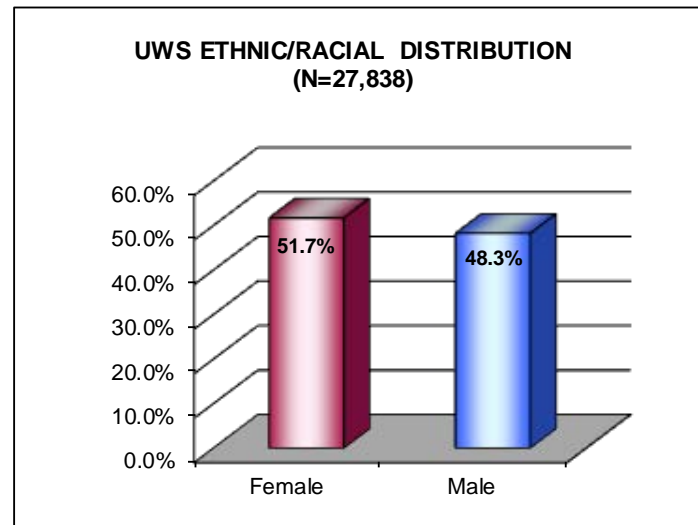
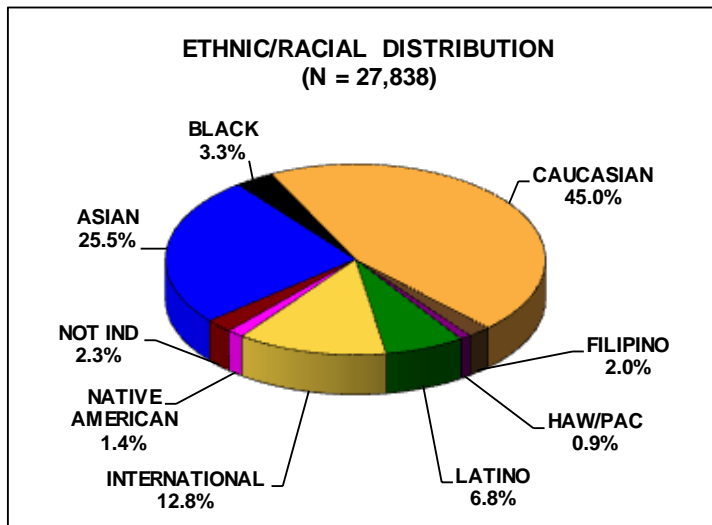
***Report on Enrollment,
Retention and Graduation***

Prepared by:
Assessment Unit Staff
Office of Minority Affairs & Diversity
November 15, 2012

UNDERGRADUATE ENROLLMENT DATA AS OF THE 10TH DAY OF AUTUMN 2012

SEATTLE CAMPUS

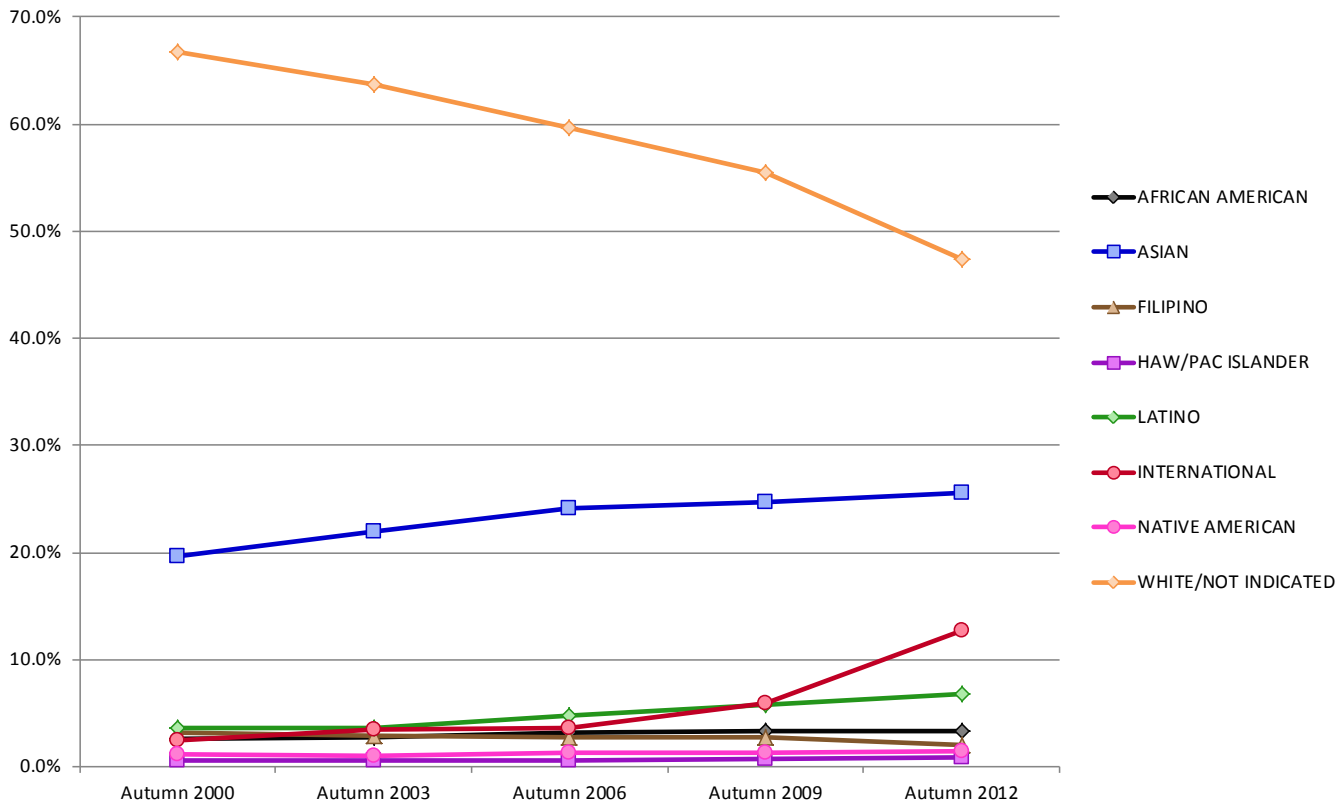
ETHNICITY	FEMALE	MALE	TOTAL
ASIAN	3,742	3,357	7,099
BLACK	506	410	916
CAUCASIAN	6,211	6,327	12,538
FILIPINO	303	247	550
HAW/PAC	137	125	262
LATINO	1,043	838	1,881
INTERNATIONAL	1,948	1,603	3,551
NATIVE AMERICAN	212	176	388
NOT IND	299	354	653
TOTAL	14,401	13,437	27,838
ALL URM *	1,898	1,549	3,447
STUDENTS OF COLOR**	5,943	5,153	11,096



* URM = Underrepresented Minorities (i.e., Black, Haw/Pac, Latino & Native American)

** STUDENT OF COLOR = Asian, Black, Filipino, Haw/Pac, Latino & Native American

UW SEATTLE - UNDERGRADUATE ENROLLMENT TREND



ETHNICITY	Autumn 2000		Autumn 2003		Autumn 2006		Autumn 2009		Autumn 2012	
AFRICAN AMERICAN	675	2.6%	716	2.7%	835	3.2%	929	3.4%	916	3.3%
ASIAN	5,040	19.6%	5,783	22.0%	6,260	24.1%	6,766	24.7%	7,099	25.5%
FILIPINO	811	3.2%	774	2.9%	733	2.8%	746	2.7%	550	2.0%
HAW/PAC ISLANDER	141	0.5%	159	0.6%	162	0.6%	185	0.7%	262	0.9%
LATINO	929	3.6%	949	3.6%	1,259	4.8%	1,604	5.8%	1,881	6.8%
INTERNATIONAL	645	2.5%	910	3.5%	931	3.6%	1,610	5.9%	3,551	12.8%
NATIVE AMERICAN	317	1.2%	280	1.1%	328	1.3%	369	1.3%	388	1.4%
WHITE/NOT INDICATED	17,160	66.7%	16,740	63.6%	15,494	59.6%	15,223	55.5%	13,191	47.4%
TOTAL	25,718	100.0%	26,311	100.0%	26,002	100.0%	27,432	100.0%	27,838	100.0%

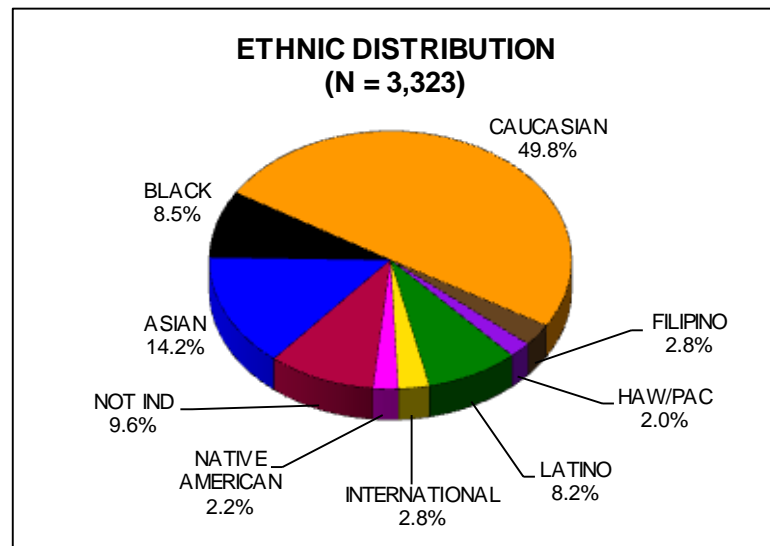
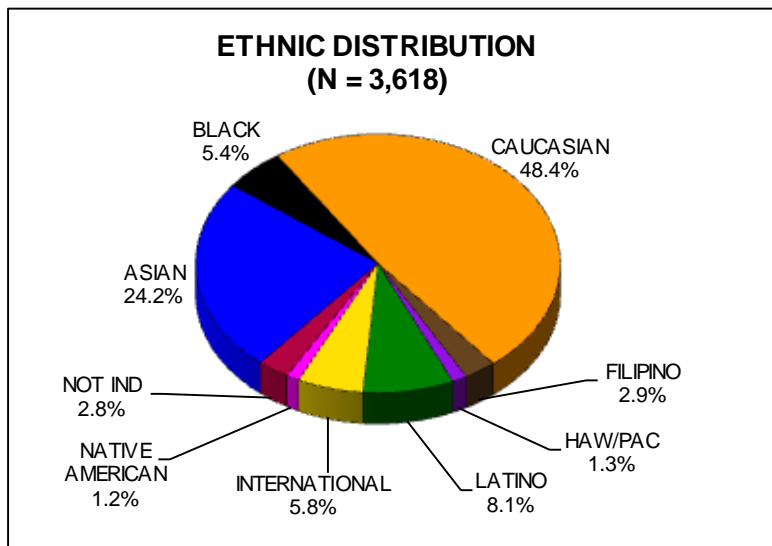
UNDERGRADUATE ENROLLMENT DATA AS OF THE 10TH DAY OF AUTUMN 2012

BOTHELL CAMPUS

ETHNICITY	FEMALE	MALE	ALL UW
ASIAN	396	479	875
BLACK	104	91	195
CAUCASIAN	897	854	1,751
FILIPINO	49	55	104
HAW/PAC	23	24	47
LATINO	179	113	292
INTERNATIONAL	95	116	211
NATIVE AMERICAN	20	22	42
NOT IND	48	53	101
TOTAL	1,811	1,807	3,618
ALL URM*	326	250	576
STUDENT OF COLOR**	771	784	1,555

TACOMA CAMPUS

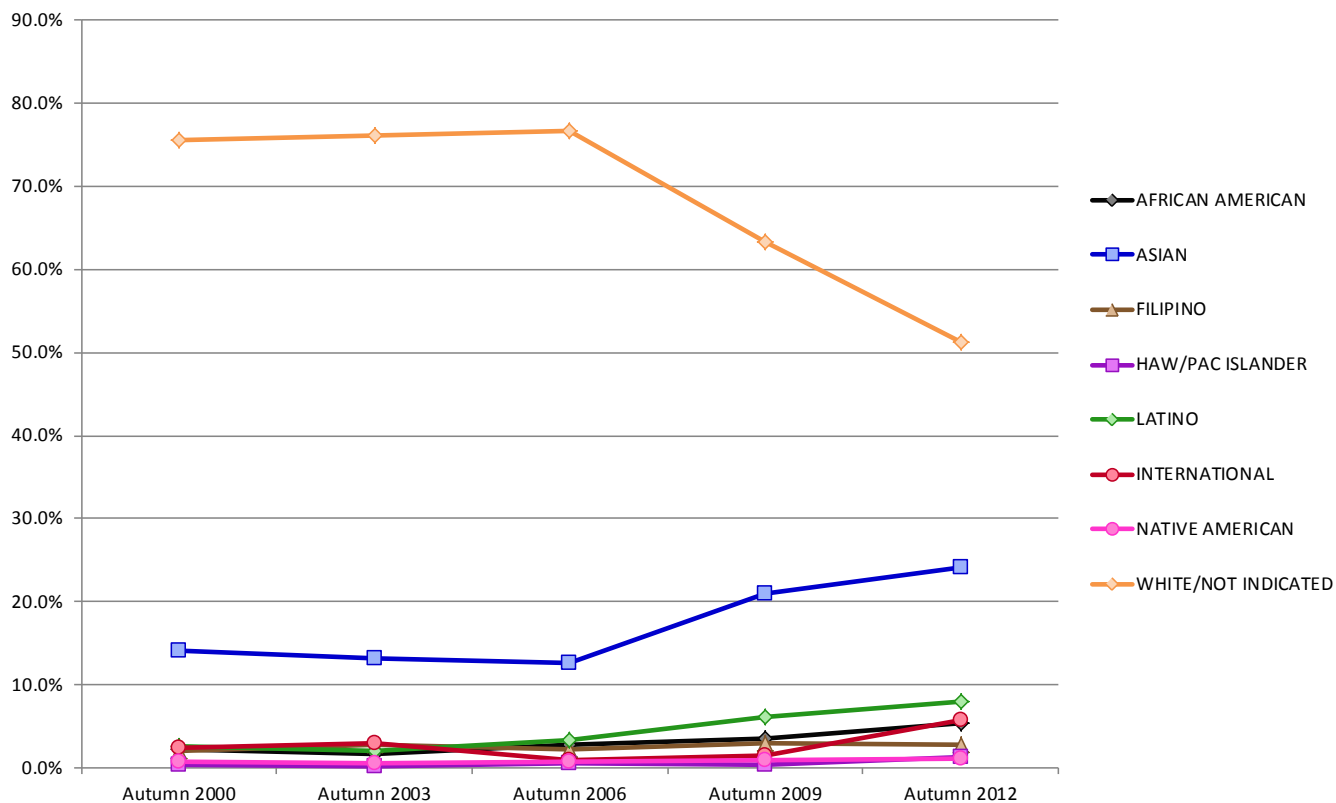
ETHNICITY	FEMALE	MALE	ALL UW
ASIAN	240	231	471
BLACK	149	132	281
CAUCASIAN	889	765	1,654
FILIPINO	54	39	93
HAW/PAC	42	24	66
LATINO	173	101	274
INTERNATIONAL	37	55	92
NATIVE AMERICAN	46	28	74
NOT IND	159	159	318
TOTAL	1,789	1,534	3,323
ALL URM*	410	285	695
STUDENT OF COLOR**	704	555	1,259



* URM = Underrepresented Minorities (i.e., Black, Haw/Pac, Latino & Native American)

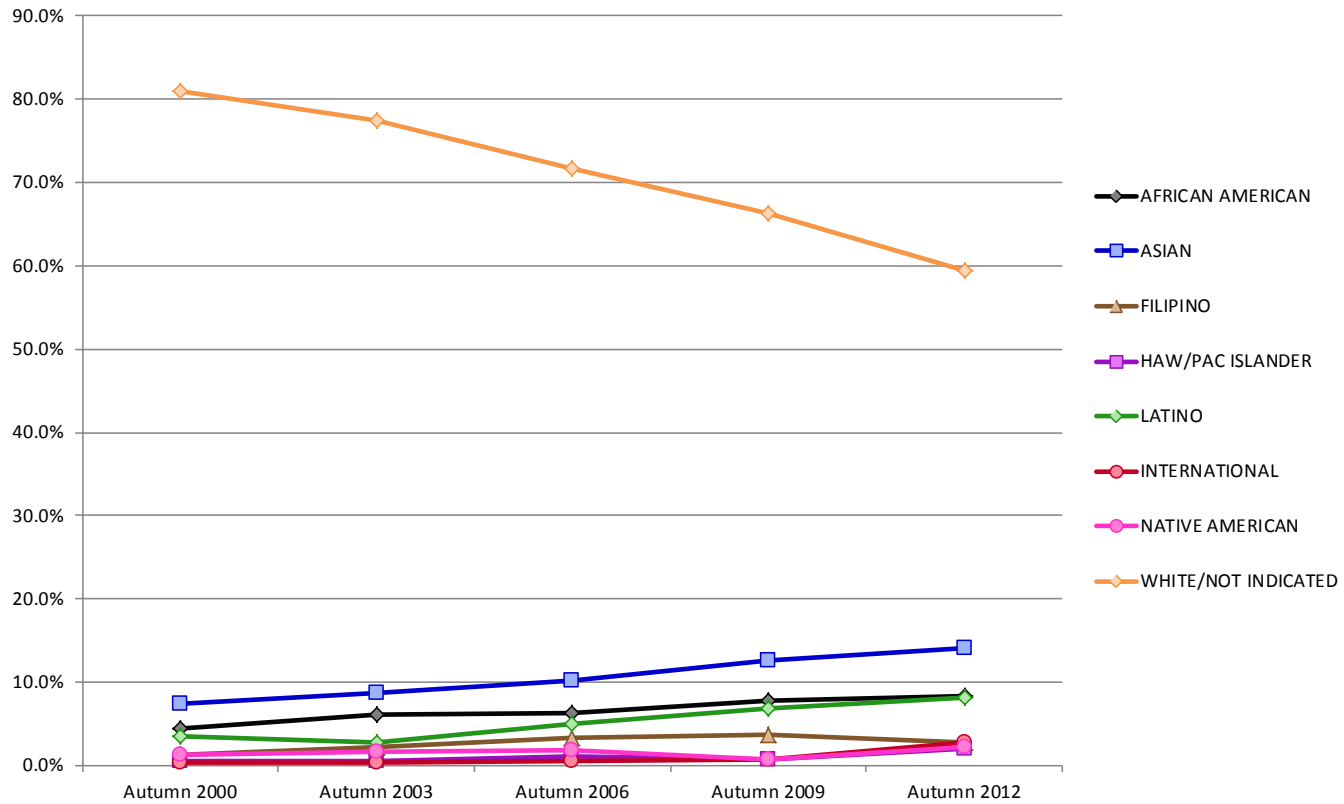
** STUDENT OF COLOR = Asian, Black, Filipino, Haw/Pac, Latino & Native American

UW BOTHELL - UNDERGRADUATE ENROLLMENT TREND



ETHNICITY	Autumn 2000		Autumn 2003		Autumn 2006		Autumn 2009		Autumn 2012	
AFRICAN AMERICAN	28	2.2%	24	1.8%	39	2.7%	83	3.6%	195	5.4%
ASIAN	177	14.1%	179	13.2%	181	12.6%	491	21.1%	875	24.2%
FILIPINO	26	2.1%	37	2.7%	31	2.2%	69	3.0%	104	2.9%
HAW/PAC ISLANDER	4	0.3%	4	0.3%	8	0.6%	11	0.5%	47	1.3%
LATINO	33	2.6%	29	2.1%	48	3.4%	144	6.2%	292	8.1%
INTERNATIONAL	30	2.4%	40	3.0%	14	1.0%	33	1.4%	211	5.8%
NATIVE AMERICAN	9	0.7%	9	0.7%	12	0.8%	23	1.0%	42	1.2%
WHITE/NOT INDICATED	952	75.6%	1,031	76.2%	1,099	76.7%	1,475	63.3%	1,852	51.2%
TOTAL	1,259	100.0%	1,353	100.0%	1,432	100.0%	2,329	100.0%	3,618	100.0%

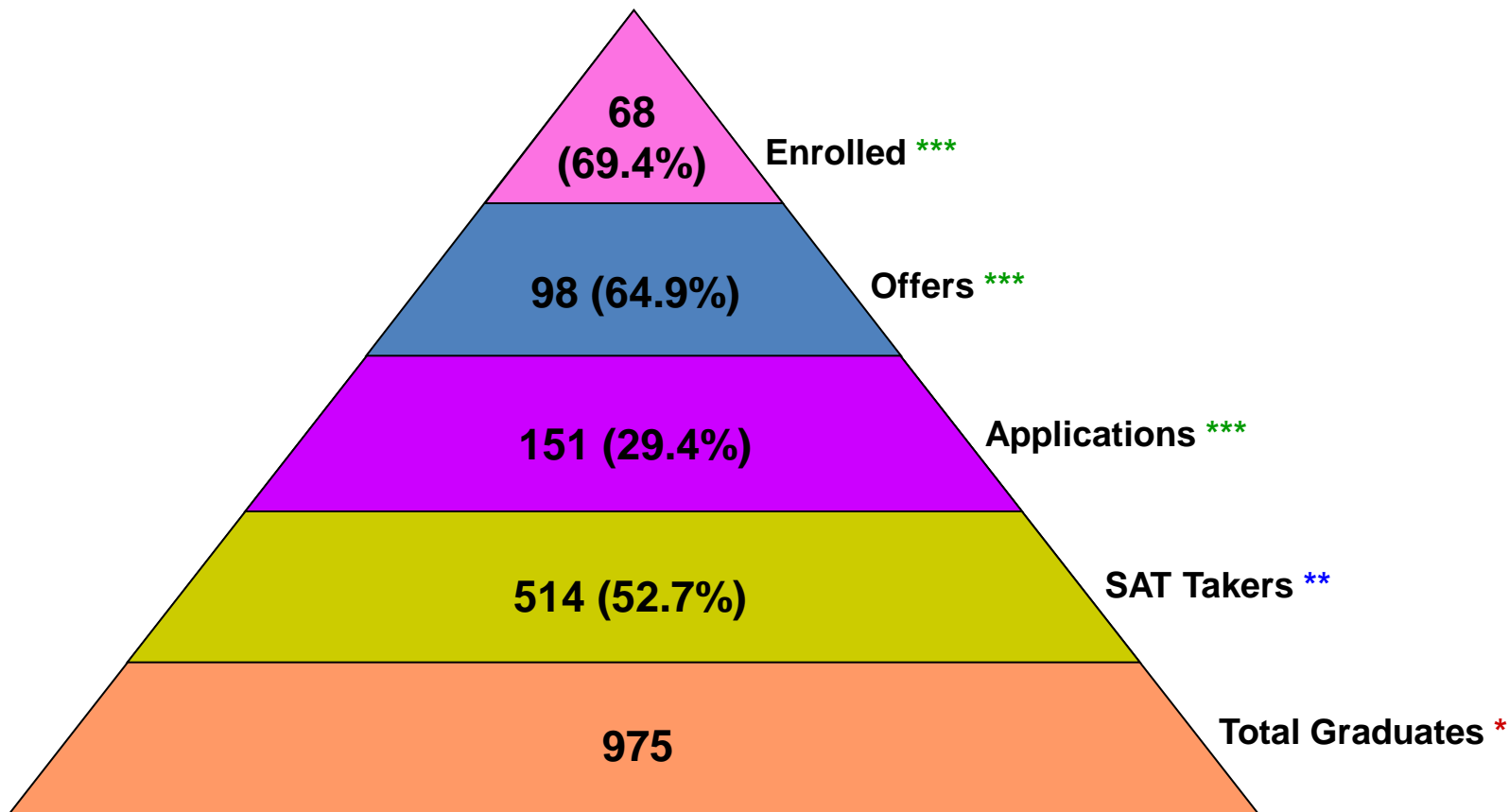
UW TACOMA - UNDERGRADUATE ENROLLMENT TREND



ETHNICITY	Autumn 2000		Autumn 2003		Autumn 2006		Autumn 2009		Autumn 2012	
AFRICAN AMERICAN	58	4.4%	95	6.1%	112	6.3%	200	7.9%	281	8.5%
ASIAN	97	7.4%	134	8.7%	182	10.2%	322	12.7%	471	14.2%
FILIPINO	18	1.4%	34	2.2%	59	3.3%	96	3.8%	93	2.8%
HAW/PAC ISLANDER	7	0.5%	10	0.6%	21	1.2%	20	0.8%	66	2.0%
LATINO	47	3.6%	44	2.8%	89	5.0%	176	7.0%	274	8.2%
INTERNATIONAL	4	0.3%	5	0.3%	11	0.6%	20	0.8%	92	2.8%
NATIVE AMERICAN	17	1.3%	26	1.7%	32	1.8%	20	0.8%	74	2.2%
WHITE/NOT INDICATED	1,058	81.0%	1,198	77.5%	1,278	71.6%	1,676	66.2%	1,972	59.3%
TOTAL	1,306	100.0%	1,546	100.0%	1,784	100.0%	2,530	100.0%	3,323	100.0%

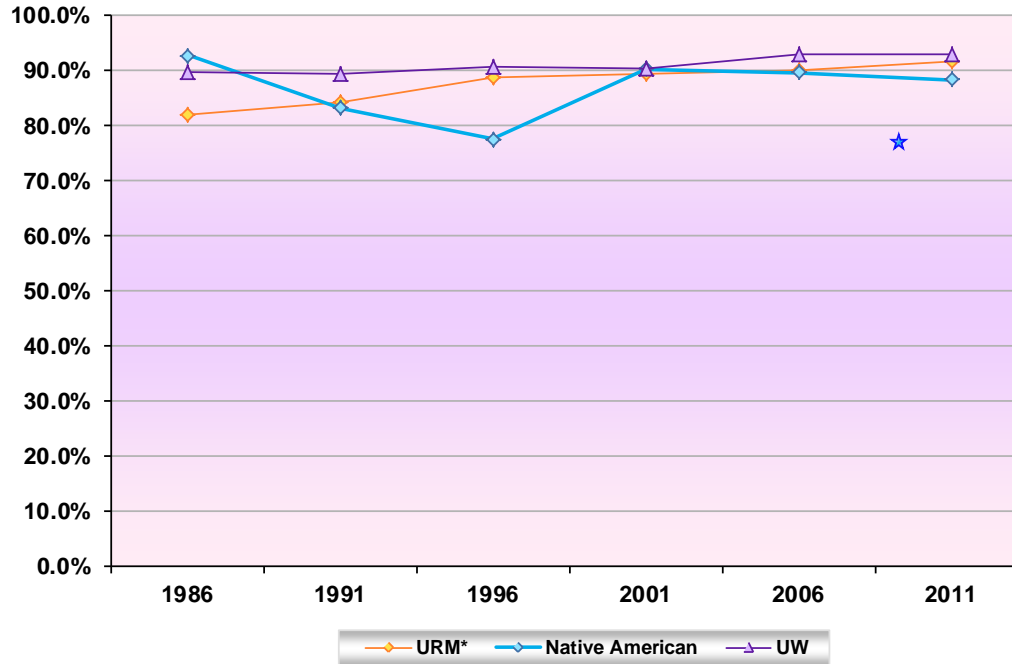
Washington State **Residents** Native American Freshman UWS Enrollment Pyramid

Enrollment Period: 2011



Sources: * OSPI Graduation & Drop-out Statistics, class of 2011
** College Board SAT Connect to College Success, year 2011
*** UW Data Management Office

SEATTLE CAMPUS
1st-Year Retention Rates (Entering Freshman Cohorts) at 5-Year Intervals
URM* vs. Native American vs. Student Body
Cohort Years: 1986, 1991, 1996, 2001, 2006 and 2011



★ 2008 = 78.6% NATIONAL AVERAGE**

YEAR	URM*	Native American	UW
1986	82.1%	92.9%	89.8%
1991	84.2%	83.3%	89.5%
1996	88.8%	77.6%	90.7%
2001	89.5%	90.4%	90.5%
2006	90.2%	89.7%	92.9%
2011	91.8%	88.5%	92.9%

URM* = Underrepresented Minorities (i.e., Black, Hawaiian/Pacific Islander, Latino, and Native American)

**Source: Enrollment in Postsecondary Institutions, Fall 2009; Graduation Rates, 2003 & 2006 Cohorts; and Financial Statistics, Fiscal Year 2009, First Look NCES-2011

**1st-Yr Retention Rates of Entering Freshman Cohorts
URM* vs. Native American vs. Student Body
Cohort Years: 2006, 2007, 2008, 2009, 2010 and 2011**

BOTHELL CAMPUS

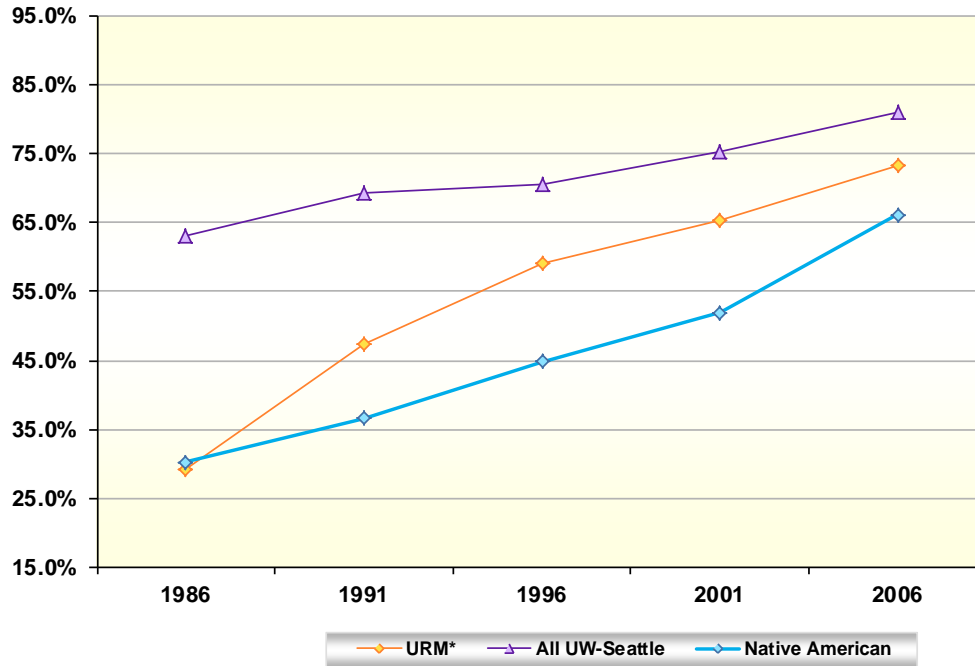
YEAR	URM*			NATIVE AMERICAN			ALL UWB		
	Cohort	Retention Data		Cohort	Retention Data		Cohort	Retention Data	
2006	20	19	95.0%	1	1	100.0%	133	109	82.0%
2007	16	11	68.8%	2	1	50.0%	151	120	79.5%
2008	21	17	81.0%	2	2	100.0%	229	181	79.0%
2009	43	36	83.7%	2	1	50.0%	297	248	83.5%
2010	74	62	83.8%	9	8	88.9%	391	336	85.9%
2011	123	91	74.0%	4	3	75.0%	519	402	77.5%
AVG	49.50	39.33	79.5%	3.33	2.67	80.0%	286.67	232.67	81.2%

TACOMA CAMPUS

YEAR	URM*			NATIVE AMERICAN			ALL UWT		
	Cohort	Retention Data		Cohort	Retention Data		Cohort	Retention Data	
2006	31	16	51.6%	3	3	100.0%	151	104	68.9%
2007	30	19	63.3%	--	--	--	171	118	69.0%
2008	37	29	78.4%	2	2	100.0%	178	132	74.2%
2009	43	33	76.7%	3	3	100.0%	200	148	74.0%
2010	59	44	74.6%	10	7	70.0%	208	158	76.0%
2011	63	45	71.4%	7	5	71.4%	252	178	70.6%
AVG	43.83	31.00	70.7%	5.00	4.00	80.0%	193.33	139.67	72.2%

URM* = Underrepresented Minorities (i.e., Black, Hawaiian/Pacific Islander, Latino, and Native American)

SEATTLE CAMPUS
6-Year Graduation Rates (Entering Freshman Cohorts) at 5-Year Intervals
URM* vs Student Body
Cohort Years: 1986, 1991, 1996, 2001 and 2006



YEAR	URM*	Native American	All UW-Seattle
1986	29.2%	30.2%	63.2%
1991	47.5%	36.7%	69.3%
1996	59.2%	44.9%	70.5%
2001	65.3%	51.9%	75.3%
2006	73.4%	66.2%	81.0%

URM* = Underrepresented Minorities (i.e., Black, Hawaiian/Pacific Islander, Latino, and Native American)

**UW SEATTLE
6-YR GRADUATION RATES OF 2006 COHORT**

ETHNICITY	Freshman Cohort			Transfer Cohort		
	Cohort	Grad Data		Cohort	Grad Data	
ASIAN	1,400	1,159	82.8%	234	200	85.5%
BLACK	155	111	71.6%	76	57	75.0%
CAUCASIAN	2,899	2,315	79.9%	809	677	83.7%
FILIPINO	137	108	78.8%	24	19	79.2%
HAW/PAC	36	20	55.6%	4	4	100.0%
LATINO	309	236	76.4%	84	65	77.4%
INTERNATIONAL	138	108	78.3%	279	135	48.4%
NATIVE AMERICAN	70	48	68.6%	25	21	84.0%
NOT IND	252	202	80.2%	126	100	79.4%
TOTAL	5,396	4,307	79.8%	1,661	1,278	76.9%
URM**	570	415	72.8%	189	147	77.8%

URM** = Underrepresented Minorities (i.e., Black, Hawaiian/Pacific Islander, Latino & Native American)

**UW BOTHELL
6-YR GRADUATION RATES OF 2006 COHORT**

ETHNICITY	Freshman Cohort			Transfer Cohort		
	Cohort	Grad Data		Cohort	Grad Data	
ASIAN	39	26	66.7%	27	22	81.5%
BLACK	7	5	71.4%	10	7	70.0%
CAUCASIAN	56	35	62.5%	206	176	85.4%
FILIPINO	5	2	40.0%	6	5	83.3%
HAW/PAC	1	1	100.0%	3	2	66.7%
LATINO	11	6	54.5%	19	17	89.5%
INTERNATIONAL	1	1	100.0%	3	3	100.0%
NATIVE AMERICAN	1	1	100.0%	4	4	100.0%
NOT IND	11	6	54.5%	56	49	87.5%
TOTAL	132	83	62.9%	334	285	85.3%
URM**	20	13	65.0%	36	30	83.3%

URM** = Underrepresented Minorities (i.e., Black, Hawaiian/Pacific Islander, Latino & Native American)

**UW TACOMA
6-YR GRADUATION RATES OF 2006 COHORT**

ETHNICITY	Freshman Cohort			Transfer Cohort		
	Cohort	Grad Data		Cohort	Grad Data	
ASIAN	34	19	55.9%	47	40	85.1%
BLACK	21	6	28.6%	29	23	79.3%
CAUCASIAN	72	39	54.2%	318	257	80.8%
FILIPINO	14	2	14.3%	18	13	72.2%
HAW/PAC	3	0	0.0%	3	3	100.0%
LATINO	12	6	50.0%	32	26	81.3%
INTERNATIONAL						
NATIVE AMERICAN	3	1	33.3%	8	8	100.0%
NOT IND	30	12	40.0%	86	63	73.3%
TOTAL	189	85	45.0%	541	433	80.0%
URM**	39	13	33.3%	72	60	83.3%

URM** = Underrepresented Minorities (i.e., Black, Hawaiian/Pacific Islander, Latino & Native American)

NATIVE AMERICAN GRADUATION RATES AT FLAGSHIP STATE UNIVERSITIES

	UNIVERSITY	GRADUATION RATE
1)	University of Virginia	96%
2)	University of California Berkeley	82%
3)	University of Michigan	82%
4)	University of Florida	79%
5)	University of Maryland	79%
6)	University of Connecticut	75%
7)	University of Illinois	73%
8)	University of Texas	73%
9)	University of North Carolina	71%
10)	University of Washington	69%
11)	Ohio State University	66%
12)	Rutgers University (New Jersey)	65%
13)	University of Georgia	65%
14)	University of Delaware	63%
15)	Pennsylvania State University	62%
16)	University of Alabama	62%
17)	University of Utah	61%
18)	University of Wisconsin	60%
19)	University of Oregon	59%
20)	Indiana University	58%
21)	University of New Hampshire	58%
22)	University of Iowa	57%
23)	University of Vermont	56%
24)	University of Oklahoma	55%
25)	University of Mississippi	54%

	UNIVERSITY	GRADUATION RATE
26)	University of Colorado	53%
27)	University of Nebraska	53%
28)	University of Kansas	51%
29)	University of Missouri	51%
30)	University of Kentucky	50%
31)	University of South Carolina	49%
32)	University of Arkansas	48%
33)	Louisiana State University	45%
34)	University of Massachusetts	45%
35)	West Virginia University	42%
36)	University of Maine	40%
37)	University of Wyoming	40%
38)	New York (SUNY Buffalo)	38%
39)	University of Hawaii	37%
40)	University of Minnesota	36%
41)	University of North Dakota	36%
42)	University of Tennessee	34%
43)	University of Nevada	33%
44)	University of Arizona	31%
45)	University of Rhode Island	31%
46)	University of Idaho	29%
47)	University of New Mexico	24%
48)	University of Montana	21%
49)	University of South Dakota	13%
50)	University of Alaska	9%

Note: Graduation rates are for all students entering in the years 2002-2005 and graduating from the same school within six years.
 Source: <http://fs.ncaa.org/Docs/newmedia/public/rates/index.html>

UNDERGRADUATE NATIVE AMERICAN - Ethnic Distribution by Sub-Groups
Enrollment Period: 10th Day of Autumn 2012

NATIVE AMERICAN SUB-GROUPS	Female	Male	Total
ABENAKI	1		1
ALASKA INDIAN	4	2	6
ALASKA NATIVE	6	1	7
ALEUT	2	2	4
AM IND - NO DOC	116	93	209
AMERICAN INDIAN	25	24	49
APACHE		1	1
BLACKFEET	1	1	2
CANADIAN INDIAN	1	1	2
CHEROKEE	3	4	7
CHEROKEE ALABAMA		1	1
CHEYENNE RIVER SIOUX		1	1
CHICKASAW	1	1	2
CHIPPEWA	1	1	2
CHOCTAW	1	1	2
COAST MIWOK	1		1
COLORADO RIVER	1		1
COLVILLE		2	2
COMANCHE		1	1
COOS		1	1
COUER D'ALENE	1		1
COW CREEK UMPQUA	1		1
COWLITZ		2	2
DELAWARE	1	3	4
ESKIMO	2	2	4
FORT BELKNAP	1		1
GRANDE RONDE	1		1
JAMESTOWN	1		1
KIOWA	1		1
KLAMATH		2	2
KOOTENAI	1		1
LITTLE SHELL CHIPPEW	1		1

NATIVE AMERICAN SUB-GROUPS	Female	Male	Total
MAKAH	6	2	8
MASHPEE	1		1
MINNESOTA CHIPPEWA		1	1
NAVAJO	2		2
NEZ PERCE		2	2
NOOKSACK	2		2
NORTHERN CHEYENNE	1		1
OSAGE	1	1	2
PALA		1	1
POTAWATOMIE		2	2
PUYALLUP	1		1
QUINULT	2	2	4
RENO-SPARKS	1		1
ROSEBUD SIOUX	1	1	2
SALISH AND KOOTENAI		1	1
SAMISH		2	2
SAN JUAN PUEBLO		1	1
SENECA NATION	1		1
SIOUX	1	2	3
SKOKOMISH	1		1
SNOHOMISH		1	1
SNOQUALMIE	1	1	2
TLINGIT	4	3	7
TULALIP	2	1	3
TURTLE MOUNTAIN	3		3
UTE		1	1
WAMPANOAG	1		1
WASHO	1		1
WESTERN CHEROKEE	1		1
YAKAMA	2	4	6
YUROK	1		1
TOTAL	212	176	388

**UW-SEATTLE
UNDERGRADUATE NATIVE AMERICANS CODED LATINO
Enrollment Period: 10th Day of Autumn 2012**

SUB-GROUPS OF NATIVE AMERICANS CODED LATINO	Female	Male	Total
AM IND - NO DOC/ CUBAN	1		1
AM IND - NO DOC/ HISPANIC	3	6	9
AM IND - NO DOC/ MEXICAN MEX/ CHICANO	26	18	44
AM IND - NO DOC/ OTHER SPANISH/ HISP	1		1
AM IND - NO DOC/ PUERTO RICAN	1		1
AM IND - NO DOC/ SAVADOREAN		1	1
AM IND - NO DOC/ SPANISH	5	3	8
AMERICAN INDIAN	2		2
BLACKFEET	1		1
COW CREEK UMPQUA	1		1
MAKAH		1	1
NAVAJO	1		1
QUILEUTE	1		1
SKOKOMISH	1		1
SUQUAMISH	1		1
WALKER RIVER	1		1
YAKAMA		1	1
TOTAL	46	30	76

UW-SEATTLE
GRADUATE NATIVE AMERICAN - Ethnic Distribution by Sub-Groups
Enrollment Period: 10th Day of Autumn 2012

Sub-Grp	Female	Male	Total
ALASKA INDIAN	1		1
ALASKA NATIVE	4	1	5
AM IND - NO DOC	2		2
AM IND OTHER TRB-DOC	1		1
AMERICAN INDIAN	39	26	65
ARAPAHO		1	1
BLACKFEET	2		2
BLACKFOOT SIOUX		1	1
CANADIAN INDIAN	1		1
CAYUSE		1	1
CHEROKEE	3	1	4
CHEROKEE ALABAMA	1		1
CHIPPEWA	1		1
CHOCTAW	2		2
COLVILLE		3	3
COWLITZ	1		1
CREE	1		1
CREEK	2		2
CROW CREEK SIOUX		1	1
DELAWARE	1		1
ESKIMO JAPANESE		1	1
KALISPEL	1		1
LUMBEE		1	1

NATIVE AMERICAN SUB-GROUPS	Female	Male	Total
MESCALERO APACHE	1		1
MEXICAN AMERICAN IND		1	1
MUCKLESHOOT		1	1
NAVAJO	8	5	13
NEZ PERCE	1		1
NORTHERN CHEYENNE	1		1
ONEIDA	1		1
OSAGE	1		1
SALISH AND KOOTENAI	1		1
SENECA	1		1
SPOKANE	1		1
SWINOMISH		1	1
TLINGIT	1		1
TSIMSHIAN		1	1
TURTLE MOUNTAIN	1	1	2
WHITE AMERIND-1 TRB	1		1
WHITE MOUNTAIN APACH	1	1	2
WINNEBAGO	1		1
WISCONSIN WINNEBAGO		1	1
YAKAMA	1	1	2
ZUNI	1		1
TOTAL	86	50	136

**UW-SEATTLE
GRADUATE NATIVE AMERICANS CODED LATINO
Enrollment Period: 10th Day of Autumn 2012**

SUB-GROUPS OF NATIVE AMERICANS CODED LATINO	Female	Male	Total
AMERICAN INDIAN/ CHICANO	1		1
AMERICAN INDIAN/ GUATEMALAN		1	1
AMERICAN INDIAN/ HISPANIC	1	4	5
AMERICAN INDIAN/ MEXICAN MEX/ CHICANO	5		5
AMERICAN INDIAN/ OTHER SPANISH/ HISP	1		1
AMERICAN INDIAN/ SPAIN		1	1
AMERICAN INDIAN/ SPANISH-AMERICAN	1		1
AMERICAN INDIAN/ SPANISH-MEXICAN		1	1
CENTRAL AMERICAN IND/ HISPANIC		1	1
CENTRAL AMERICAN IND/ MEXICAN MEX/ CHICANO	1		1
ECHOTA CHEROKEE TRIB		1	1
MAKAH	1		1
MEXICAN AMERICAN IND/ HISPANIC	2		2
MEXICAN AMERICAN IND/ MEXICAN MEX/ CHICANO		2	2
NAVAJO/ NUECO MEXICANO	1		1
NAVAJO/ SALVADOREAN	1		1
PASCUA YAQUI	1		1
ROSEBUD SIOUX		1	1
SOUTH AMERICAN INDIA	1		1
TIGUA	1		1
TOTAL	18	12	30

UW-SEATTLE
PROFESSIONAL NATIVE AMERICAN - Ethnic Distribution by Sub-Groups
Enrollment Period: 10th Day of Autumn 2012

SUB-GROUPS OF NATIVE AMERICANS CODED LATINO	Female	Male	Total
AM IND - NO DOC	9	14	23
AMERICAN INDIAN	1		1
CREEK	1		1
NEZ PERCE	1		1
PUYALLUP	1		1
TOTAL	13	14	27

UW-SEATTLE
PROFESSIONAL NATIVE AMERICANS CODED LATINO
Enrollment Period: 10th Day of Autumn 2012

SUB-GROUPS OF NATIVE AMERICANS CODED LATINO	Female	Male	Total
AM IND - NO DOC/ HISPANIC	1		1
AM IND - NO DOC/ MEXICAN MEX/ CHICANO	1		1
AM IND - NO DOC/ PUERTO RICAN	1		1
AMERICAN INDIAN	1		1
TOTAL	4	0	4