

State of Native Americans at the University of Washington - Seattle

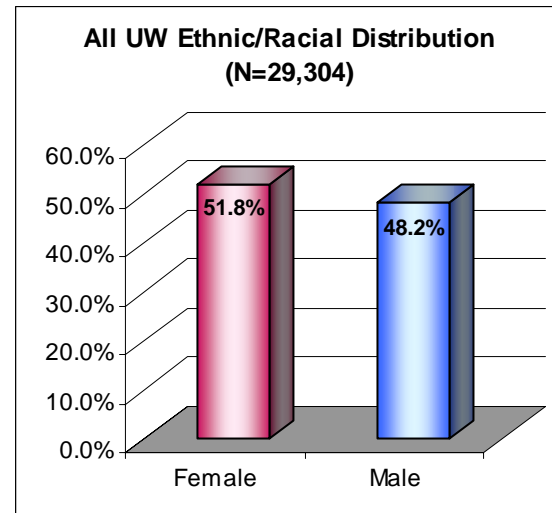
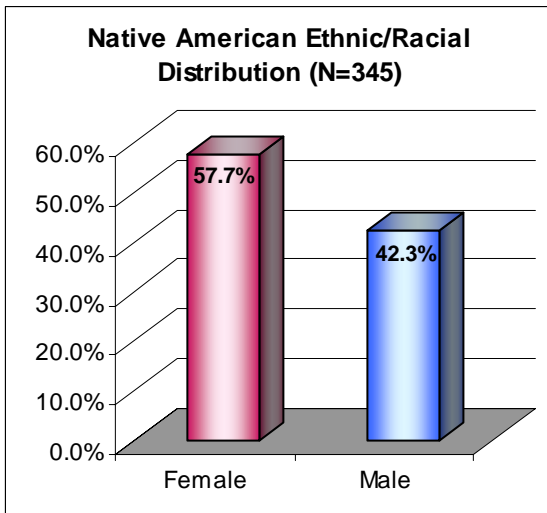
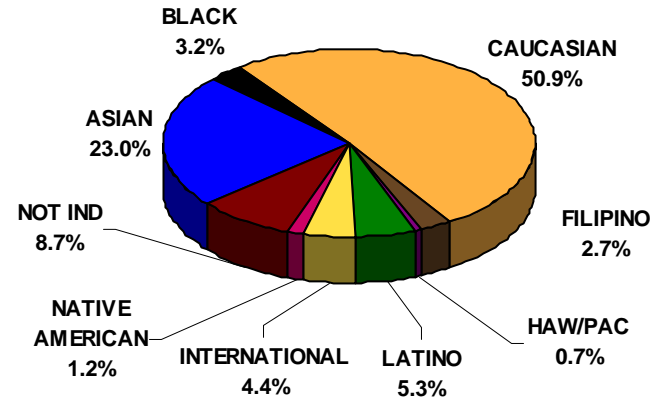


Prepared by:
Assessment Unit Staff
Office of Minority Affairs & Diversity
April 2, 2009

UNDERGRADUATE ENROLLMENT DATA AS OF THE 10TH DAY OF AUTUMN 2008

UNDERGRADUATES	2008		
	FEMALE	MALE	TOTAL
ASIAN	3,571	3,156	6,727
BLACK	493	436	929
CAUCASIAN	7,617	7,302	14,919
FILIPINO	441	339	780
HAW/PAC	105	87	192
LATINO	858	699	1,557
INTERNATIONAL	660	641	1,301
NATIVE AMERICAN	199	146	345
NOT IND	1,242	1,312	2,554
TOTAL	15,186	14,118	29,304
ALL URM *	1,655	1,368	3,023
STUDENTS OF COLOR	5,667	4,863	10,530

ETHNIC/RACIAL DISTRIBUTION (N = 29,304)



* URM = Underrepresented Minorities (i.e., Black, Haw/Pac, Latino & Native American)

Undergrad Native American Enrollees as of the 10th Day of Autumn 2008 by Tribal Affiliation

TRIBAL AFFILIATION	FEMALE	MALE	TOTAL
ALASKA INDIAN	2	1	3
ALASKA NATIVE	7	4	11
ALEUT	2	1	3
AM IND - NO DOC	116	73	189
AMERICAN INDIAN		1	1
AMERIND WHITE	2	2	4
ASSINIBOINE		1	1
BAY MILLS CHIPPEWA	1		1
BLACKFEET	1	1	2
CADDO	1		1
CANADIAN INDIAN		1	1
CHEROKEE	3	4	7
CHICKASAW	1	2	3
CHIPPEWA	1	1	2
CHOCTAW	3		3
CHUGACH	1		1
COLVILLE	7	3	10
COMANCHE	2		2
COWLITZ	2	1	3
CREEK	2	2	4
ESKIMO		1	1
FLATHEAD		1	1
FORT PECK	1		1
HOPI		1	1
IOWA	1		1
KALISPEL	1		1
KAROK	1		1
KLAMATH		1	1
LAC COURTE OREILLES	1		1
LUMMI		1	1
MAIDU	1		1
MAKAH	1	2	3
MINNESOTA CHIPPEWA	1	3	4
MOHAWK		1	1
MUCKLESHOOT	1	1	2
NAVAJO	2	2	4
NEZ PERCE	1	1	2

TRIBAL AFFILIATION	FEMALE	MALE	TOTAL
NOOKSACK	2	1	3
NORTHERN ARAPAHO		1	1
OGLALA SIOUX	1	2	3
PIT RIVER		1	1
PONCA	1		1
POTAWATOMIE		1	1
PUYALLUP	1	2	3
QUILEUTE		1	1
QUINAULT	4	1	5
SALISH AND KOOTENAI	1	1	2
SAMISH	1	2	3
SANTEE SIOUX		1	1
SANTO DOMINGO		1	1
SEALASKA		1	1
SHOALWATER	2		2
SILETZ	1		1
SIOUX	2	2	4
SNOHOMISH	1	1	2
SNOQUALMIE		1	1
SQUAXIN ISLAND	2	1	3
STAR CLAN OF MUSCOGE		1	1
SUQUAMISH		1	1
TLINGIT	4		4
TULALIP	3	2	5
TUNICA-BILOXI		1	1
TURTLE MOUNTAIN		2	2
UPPER SKAGIT		1	1
WARM SPRINGS	1		1
WASHAKIE	1		1
WESTERN CHEROKEE		1	1
WINNEBAGO	1		1
WINTU		1	1
YAKAMA	2	2	4
YAVAPAI APACHE	1		1
YUROK	1		1
TOTAL	199	146	345

NOTE: Of the 11 Native American students who enrolled after the 10th Day of Autumn 2008, 6 had no documentation, 1 each was Amerind White, Blackfeet, Coast Miwok, Snohomish, and Tlingit

Graduate Native American Enrollees as of the 10th Day of Autumn 2008 by Tribal Affiliation

TRIBAL AFFILIATION	FEMALE	MALE	TOTAL
ABENAKI	1		1
ALASKA NATIVE	2		2
ALEUT	2	1	3
AM IND - NO DOC	2	1	3
AMERICAN INDIAN	9	3	12
BLACKFEET	1		1
CHEROKEE	3	3	6
CHICKAHOMINY	1		1
CHIPPEWA	2	2	4
CHOCTAW	2	1	3
COLVILLE	1	1	2
COWLITZ	1		1
CREEK	4		4
CROW CREEK SIOUX		1	1
DUWAMISH		1	1
EASTERN CHEROKEE	1		1
ESKIMO		1	1
ESKIMO JAPANESE	2	1	3
FLANDREAU SANTEE		1	1
FORT PECK		1	1
JUANENO	1		1
KALAPUYA	1		1
LUMBEE	1	2	3
MAKAH		1	1

TRIBAL AFFILIATION	FEMALE	MALE	TOTAL
MIAMI	1		1
MICMAC	1		1
MUCKLESHOOT	1		1
NAVAJO	3	1	4
OGLALA SIOUX	2		2
OSAGE	1		1
PAMUNKEY	1		1
PIMA	1		1
POWHATAN	1		1
SANTEE SIOUX	1		1
SAULT STE. MARIE CHI		2	2
SENECA-CAYUGA		1	1
SHOSHONE	1		1
SISSETON-WAHPETAN		1	1
SOUTH AMERICAN INDIA		1	1
SWINOMISH		1	1
TLINGIT	1		1
WHITE AMERIND	1	2	3
WHITE EARTH		1	1
WHITE MOUNTAIN APACH	1		1
YAKAMA	3	1	4
YUOK	1		1
ZUNI	1		1
TOTAL	59	32	91

Professional Native American Enrollees as of the 10th Day of Autumn 2008 by Tribal Affiliation

TRIBAL AFFILIATION	FEMALE	MALE	TOTAL
AM IND - NO DOC	20	11	31
TOTAL		11	31

NATIVE AMERICAN ENTERING FRESHMAN COHORTS
PERIOD: 1999-2008
TOP 49 FEEDER HIGH SCHOOLS

HIGH SCHOOL	TOTAL
BOTHELL SENIOR H S	9
MARYSVLE-PILCHUCK HS	9
WHITE SWAN H S	9
MOUNTLAKE TERRACE HS	8
KELSO HIGH SCHOOL	7
ROOSEVELT HS	7
WEST SEATTLE H S	7
KENTRIDGE HS	6
OMAK SR HIGH SCH	6
REDMOND HIGH SCHOOL	6
SEATTLE PREP/MATEO RICCI	6
SHELTON HIGH SCHOOL	6
SKYLINE HS	6
BENJAMIN FRANKLIN HS	5
BLANCHET HIGH SCHOOL	5
CEDARCREST HIGH SCHOOL	5
CURTIS SENIOR H S	5
DECATUR HIGH SCHOOL	5
GOV J R ROGERS H S	5
INGLEMOOR SENIOR H S	5
ISSAQUAH SR HS	5
NEAH BAY HIGH SCHOOL	5
NEWPORT HIGH SCHOOL	5
SHADLE PARK HIGH SCH	5
SOUTH WHIDBEY HS	5

HIGH SCHOOL	TOTAL
TAHOLAH EDUCATION CTR	5
AUBURN RIVERSIDE HS	4
BREMERTON HIGH SCH	4
CAPITAL HIGH SCHOOL	4
CENTRAL KITSAP H S	4
CHIEF SEALTH HS	4
EASTLAKE HIGH SCHOOL	4
EDMONDS WOODWAY HS	4
EMERALD RIDGE HS	4
FIFE SENIOR H S	4
GONZAGA PREP SCHOOL	4
HENRY M JACKSON HS	4
HERITAGE HS (VANCOUVER, WA)	4
JAMES A GARFIELD HS	4
KENTLAKE HS	4
LAKES HIGH SCHOOL	4
LEWIS & CLARK HS	4
MARYSVILLE ARTS& TECHNOLOGY HS	4
MEADOWDALE SR HS	4
NATHAN HALE SR HS	4
NORTH KITSAP HS	4
TOPPENISH SENIOR H S	4
W F WEST HIGH SCHOOL	4
WEATHERWAX HIGH SCHOOL	4

* Enrollees came from 270 high schools

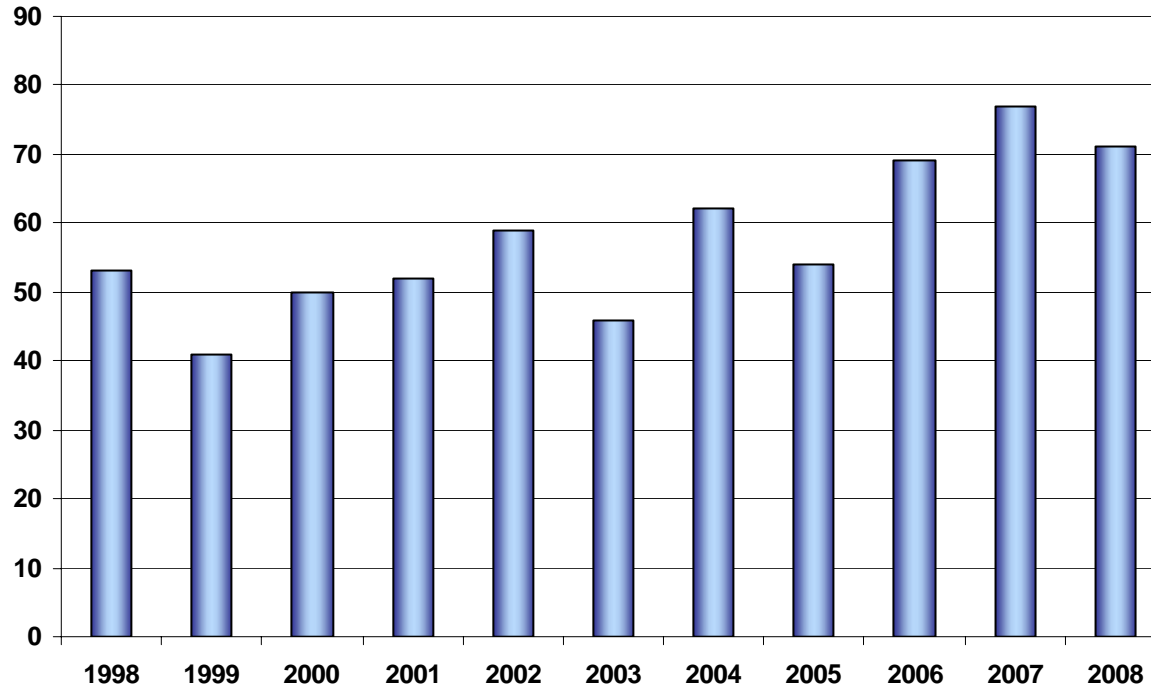
NATIVE AMERICAN ENTERING TRANSFER COHORTS
PERIOD: 1999-2008
TOP 26 2-YR & 4-YR FEEDER INSTITUTIONS

2-YR & 4-YR INSTITUTION	CITY	STATE	TOTAL
SHORELINE COMM COLL	SHORELINE	WA	24
BELLEVUE COMM COLL	BELLEVUE	WA	21
SEATTLE CENTRAL CC	SEATTLE	WA	19
NORTH SEATTLE CC	SEATTLE	WA	14
GREEN RIVER CC	AUBURN	WA	12
HIGHLINE COMM COLL	DES MOINES	WA	9
PIERCE COLLEGE	TACOMA	WA	8
EDMONDS COMM COLL	LYNNWOOD	WA	7
EVERETT COMM COLL	EVERETT	WA	7
TACOMA COMM COLL	TACOMA	WA	7
OLYMPIC COLLEGE	BREMERTON	WA	4
PENINSULA COLL	PT ANGELES	WA	4
WENATCHEE VALLEY COLL	WENATCHEE	WA	4
SPOKANE COMM COLL	SPOKANE	WA	3
WASH STATE UNIV	PULLMAN	WA	3
YAKIMA VALLEY COMM COLL	YAKIMA	WA	3
CASCADIA COMM COLL	BOTHELL	WA	2
EASTERN WASHINGTON UNIV	CHENEY	WA	2
HERITAGE COLLEGE	TOPPENISH	WA	2
NEW MEXICO		NM	2
SKAGIT VALLEY COLL	MT VERNON	WA	2
SOUTH PUGET SOUND CC	OLYMPIA	WA	2
SOUTH SEATTLE CC	SEATTLE	WA	2
UNIV ALASKA ANCHORAGE	ANCHORAGE	AK	2
UNIV OF UTAH	SALT LAKE CITY	UT	2
WHATCOM COMM COLL	BELLINGHAM	WA	2

* Enrollees came from 49 2-yr & 4-yr Institutions

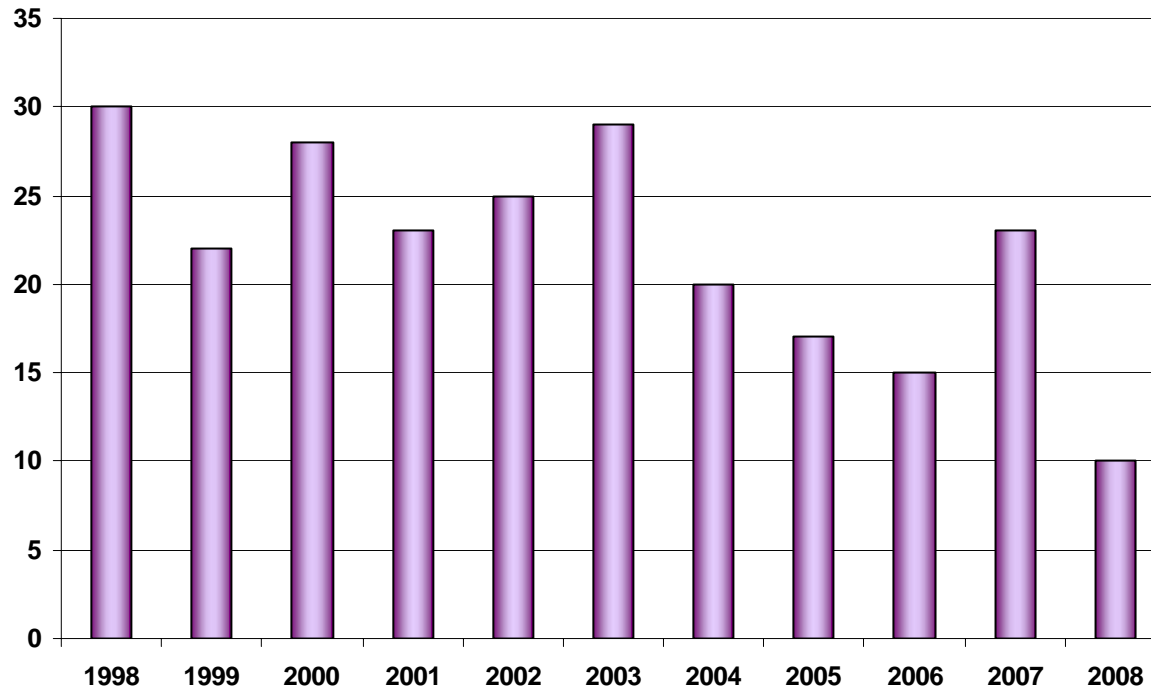
**ENROLLMENT TRENDS
NATIVE AMERICAN ENTERING FRESHMEN COHORTS (1998-2008)**

Acad Year	Enrolled
1998	53
1999	41
2000	50
2001	52
2002	59
2003	46
2004	62
2005	54
2006	69
2007	77
2008	71

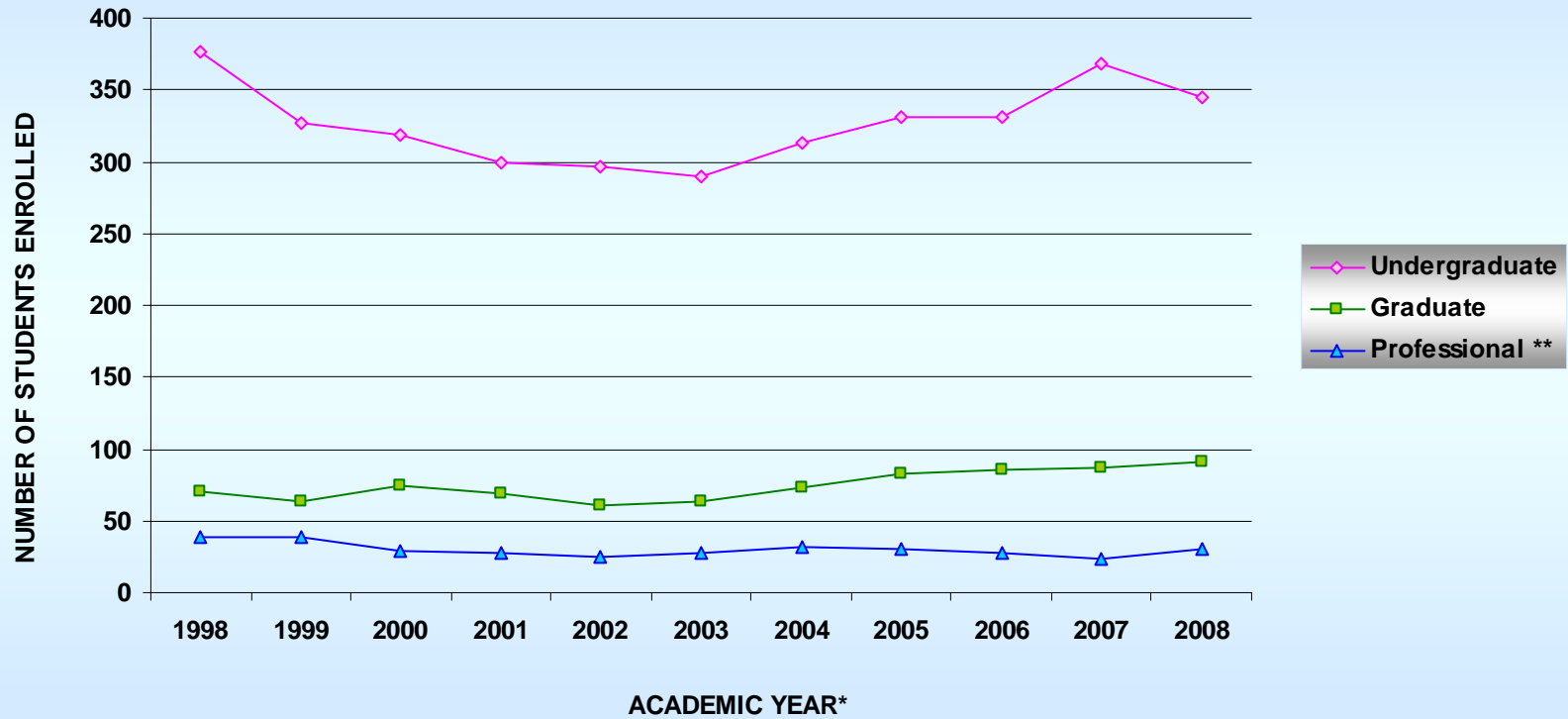


**ENROLLMENT TRENDS
NATIVE AMERICAN ENTERING TRANSFER COHORTS (1998-2008)**

Acad Year	Enrolled
1998	30
1999	22
2000	28
2001	23
2002	25
2003	29
2004	20
2005	17
2006	15
2007	23
2008	10



TOTAL NATIVE AMERICAN ENROLLMENT BY YEAR (1998-2008)



ACADEMIC YR	1998	1999	2000	2001	2002	2003	2004	2005	2006	2007	2008
Undergraduate	376	327	318	299	297	289	313	331	331	368	345
Graduate	71	63	74	69	61	64	73	83	86	87	91
Professional **	39	39	29	28	25	27	32	31	27	23	31

* Academic Year = Autumn quarter of one year to Spring quarter of the next year

** Professional = Dentistry, Law, Medicine, and Pharmacy

**6-YR GRADUATION RATES
2000-2002 ENTERING FRESHMAN COHORTS**

ETHNICITY	2000 Freshman Cohort			2001 Freshman Cohort			2002 Freshman Cohort		
	Cohort	# of Grad	Rate	Cohort	# of Grad	Rate	Cohort	# of Grad	Rate
ASIAN	1073	831	77.4%	1176	905	77.0%	1146	906	79.1%
BLACK	117	77	65.8%	120	82	68.3%	139	94	67.6%
CAUCASIAN	2639	1974	74.8%	2698	2041	75.6%	2615	2039	78.0%
FILIPINO	145	103	71.0%	168	126	75.0%	144	114	79.2%
HAW/PAC	23	16	69.6%	31	24	77.4%	23	17	73.9%
LATINO	119	82	68.9%	189	123	65.1%	171	114	66.7%
INTERNATIONAL	120	92	76.7%	157	122	77.7%	159	109	68.6%
NATIVE AMERICAN	48	26	54.2%	52	27	51.9%	58	33	56.9%
NOT IND	490	370	75.5%	703	538	76.5%	323	247	76.5%
COHORT TOTAL	4774	3571	74.8%	5294	3988	75.3%	4778	3673	76.9%
ALL URM*	307	201	65.5%	392	256	65.3%	391	258	66.0%

*URM = Underrepresented Minorities (i.e., Black, Hawaiian/Pacific Islander, Latino & Native American)

Note: 2 Native American students each from the 2000 and 2001 cohorts graduated after 6 years

**6-YR GRADUATION RATES
2000-2002 ENTERING TRANSFER COHORTS**

ETHNICITY	2000 Transfer Cohort			2001 Transfer Cohort			2002 Transfer Cohort		
	Cohort	# of Grad	Rate	Cohort	# of Grad	Rate	Cohort	# of Grad	Rate
ASIAN	186	153	82.3%	180	154	85.6%	200	178	89.0%
BLACK	41	26	63.4%	39	32	82.1%	41	29	70.7%
CAUCASIAN	959	768	80.1%	909	758	83.4%	843	710	84.2%
FILIPINO	30	25	83.3%	29	21	72.4%	24	21	87.5%
HAW/PAC	4	3	75.0%	7	4	57.1%	6	5	83.3%
LATINO	69	62	89.9%	68	64	94.1%	59	55	93.2%
INTERNATIONAL	122	112	91.8%	125	115	92.0%	105	95	90.5%
NATIVE AMERICAN	24	17	70.8%	22	15	68.2%	26	17	65.4%
NOT IND	249	195	78.3%	255	212	83.1%	241	198	82.2%
COHORT TOTAL	1684	1361	80.8%	1634	1375	84.1%	1545	1308	84.7%
ALL URM*	138	108	78.3%	136	115	84.6%	132	106	80.3%

*URM = Underrepresented Minorities (i.e., Black, Hawaiian/Pacific Islander, Latino & Native American)

Note: 1 Native American student from the 2000 cohort graduated after 6 years

Degree Majors (Bachelors) Earned by Native American Students
Period: Autumn 2003 - Summer 2008

Degree Major	F	M	Total
Sociology	20	14	34
Political Science	21	10	31
Communication	20	5	25
English	16	7	23
Anthropology	11	6	17
History	5	10	15
Psychology	10	5	15
Business Admin (Marketing)	9	3	12
Medex Degree Program	11	1	12
General Studies	7	4	11
Art	7	3	10
Biology	2	7	9
Comparative History of Ideas	7	1	8
International Studies	5	3	8
Social Sciences, Evening	6	2	8
American Indian Studies	6	1	7
Business Administration	4	3	7
Chemistry	5	2	7
Economics	3	4	7
Nursing	7		7
Philosophy	1	6	7
Business Admin (Finance)	1	5	6
Geography	3	3	6
Mathematics	3	3	6
Accounting	2	3	5
American Ethnic Studies	5		5
Art History	4	1	5
Biochemistry	1	4	5
Aeronautics & Astronautics		4	4
Drama	3	1	4
Electrical Engineering		4	4
Social Welfare	3	1	4
Women Studies	4		4
Aquatic and Fishery Sciences	2	1	3
Civil Engineering		3	3
Communications	2	1	3
Env Science and Res Mgmt	2	1	3
Environmental Studies	2	1	3

Degree Major	F	M	Total
French	2	1	3
Industrial Engineering		3	3
International Studies (Asia)		3	3
Linguistics	3		3
Mechanical Engineering		3	3
Wildlife Science	1	2	3
Zoology	3		3
Business Admin (Entrepreneurship)	1	1	2
Business Admin (Inform Systems)	2		2
Chemical Engineering	1	1	2
Communication, Evening	2		2
Comparative Literature		2	2
Humanities, Evening	2		2
Informatics		2	2
Law, Societies, and Justice	1	1	2
Materials Science & Engineering		2	2
Neurobiology	1	1	2
Physics		2	2
Speech and Hearing Sciences	1	1	2
Applied Music	1		1
Astronomy		1	1
Bioengineering		1	1
Comparative Religion	1		1
Dance	1		1
Design & Planning (Arch Studies)		1	1
English, Evening	1		1
Geological Sciences		1	1
International Studies (Latin America)		1	1
Microbiology	1		1
Music	1		1
Near Eastern Studies	1		1
Norwegian	1		1
Oceanography	1		1
Russian Language, Literature, & Culture	1		1
Scandinavian Area Studies	1		1
Sustainable Resource Sciences	1		1
Technical Communication		1	1
TOTAL	252	164	416

Native American Enrollees' Declared Majors

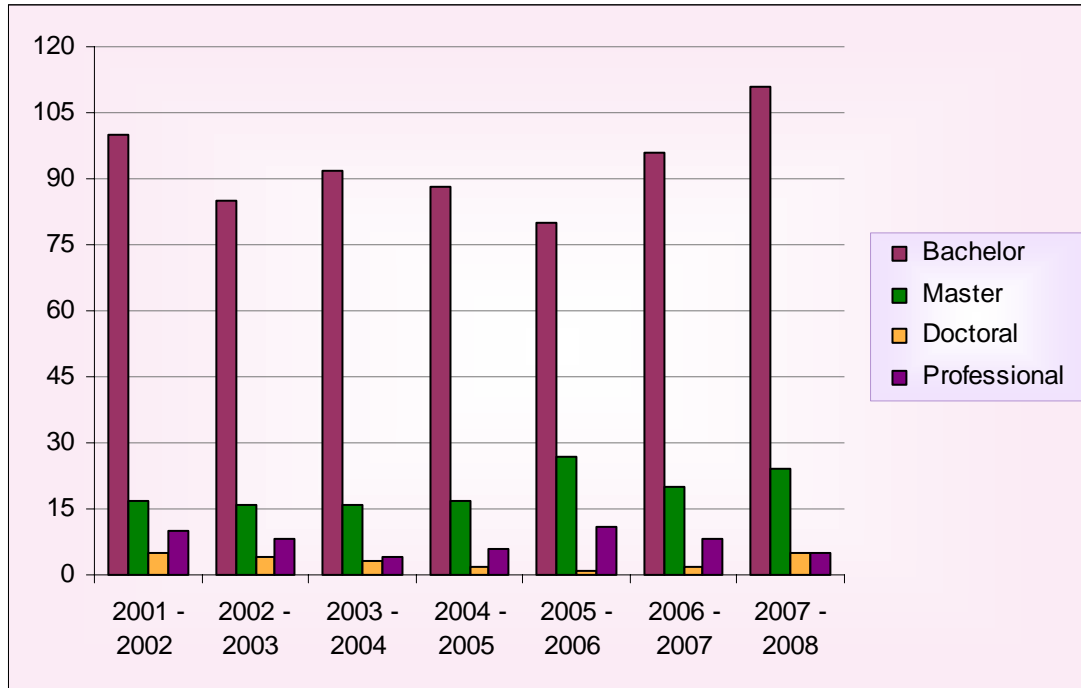
Period: Winter 2009

Degree Major	F	M	Total
Pre Major (Arts & Sciences)	15	16	31
Pre Sciences	16	10	26
Pre Social Sciences	18	2	20
Pre Engineering	4	15	19
Pre Health Sciences	14	4	18
American Indian Studies	11	3	14
Biochemistry	6	5	11
Biology	10	1	11
English	5	5	10
Communication	5	4	9
Psychology	8	1	9
Anthropology	8		8
Art	5	3	8
Political Science	5	3	8
Pre Architecture & Urban Planning	2	5	7
Pre Arts	4	3	7
Economics	2	4	6
Environmental Studies	4	2	6
Extended Pre Major	4	2	6
Medex Oral Health Therapist Certificate	6		6
Nursing	6		6
Pre Nursing	6		6
Sociology	3	3	6
Mathematics		5	5
Pre Humanities	3	2	5
Accounting		4	4
Comparative History of Ideas	2	2	4
Electrical Engineering		4	4
Physics		4	4
Business Administration	1	2	3
Business Admin (Finance)	1	2	3
Chemistry		3	3
Construction Management	1	2	3
Earth and Space Sciences		3	3
Env Science and Resource Mgmt		3	3
Geography	2	1	3
History	2	1	3
Italian	2	1	3
Medex Certificate Program	3		3
Medex Degree Program	2	1	3
Neurobiology	2	1	3
Philosophy	3		3
Social Welfare	3		3

Degree Major	F	M	Total
Speech and Hearing Sci	3		3
Bus Admin (HR Management)	2		2
Business Admin (Entrepreneurship)		2	2
Business Admin (Marketing)	2		2
Civil Engineering		2	2
Communication, Evening	2		2
Drama	2		2
German Cultural Studies	1	1	2
Individualized Studies	1	1	2
Law, Societies, and Justice	2		2
Mechanical Engineering		2	2
Microbiology	1	1	2
Music	1	1	2
Oceanography	1	1	2
Social Sciences, Evening	2		2
Spanish	2		2
Women Studies	2		2
American Ethnic Studies	1		1
App & Comp Math Sci		1	1
Architectural Studies	1		1
Art History	1		1
Atmospheric Sciences		1	1
Chemical Engineering		1	1
Chinese		1	1
Classics	1		1
Computer Science		1	1
Dance	1		1
Digital Arts and Experimental Media		1	1
Extended Pre Engineering		1	1
French	1		1
General Studies	1		1
Geological Sciences		1	1
Greek	1		1
Industrial Engineering		1	1
Informatics		1	1
International Studies (Asia)	1		1
International Studies (Latin America)	1		1
International Studies: Europe	1		1
Medical Technology	1		1
Near Eastern Studies	1		1
Postbaccalaureate Study		1	1
Pre Business Administration	1		1
Russian Lang, Lit, & Culture		1	1
TOTAL	232	155	387

Native American Degree Attainment
Degrees Conferred by the University of Washington by Type
All Campuses
2001-2007

Academic Year	Bachelor	Master	Doctoral	Professional
2001 - 2002	100	17	5	10
2002 - 2003	85	16	4	8
2003 - 2004	92	16	3	4
2004 - 2005	88	17	2	6
2005 - 2006	80	27	1	11
2006 - 2007	96	20	2	8
2007 - 2008	111	24	5	5



**2001-2008 NATIVE AMERICAN DIVERSITY SCHOLARS
TRIBAL AFFILIATION**

TRIBAL AFFILIATION	F	M	TOTAL
ALASKA NATIVE	2	1	3
AM IND - NO DOC	1		1
AMERICAN INDIAN	1		1
ARAPAHO		1	1
BLACKFEET		1	1
BLACKFOOT SIOUX		1	1
CANADIAN INDIAN		1	1
CHEROKEE		1	1
CHICKASAW	1		1
CHOCTAW	1		1
COLVILLE	3	1	4
COWLITZ	2		2
CREEK		1	1
GRANDE RONDE	1		1
HAIDA	1		1
MAKAH	2		2
MENOMINEE	1		1
PEORIA		1	1
QUILEUTE		1	1
SAMISH		1	1
SPOKANE	1		1
SQUAXIN ISLAND	1		1
SWINOMISH	1		1
TLINGIT	2	2	4
TULALIP	1		1
TURTLE MOUNTAIN		1	1
WHITE AMERIND-1 TRB	2		2
YAKIMA		1	1
TOTAL NATIVE AMERICAN	24	15	39

**2001-2008 NATIVE AMERICAN MSI/DSI* SCHOLARSHIP RECIPIENTS
TRIBAL AFFILIATION**

TRIBAL AFFILIATION	F	M	TOTAL
ALEUT	1		1
AM IND - NO DOC	4	2	6
COLVILLE	1		1
COWLITZ	1		1
HAIDA		1	1
TLINGIT		1	1
TSIMSHIAN	1		1
TOTAL NATIVE AMERICAN	8	4	12

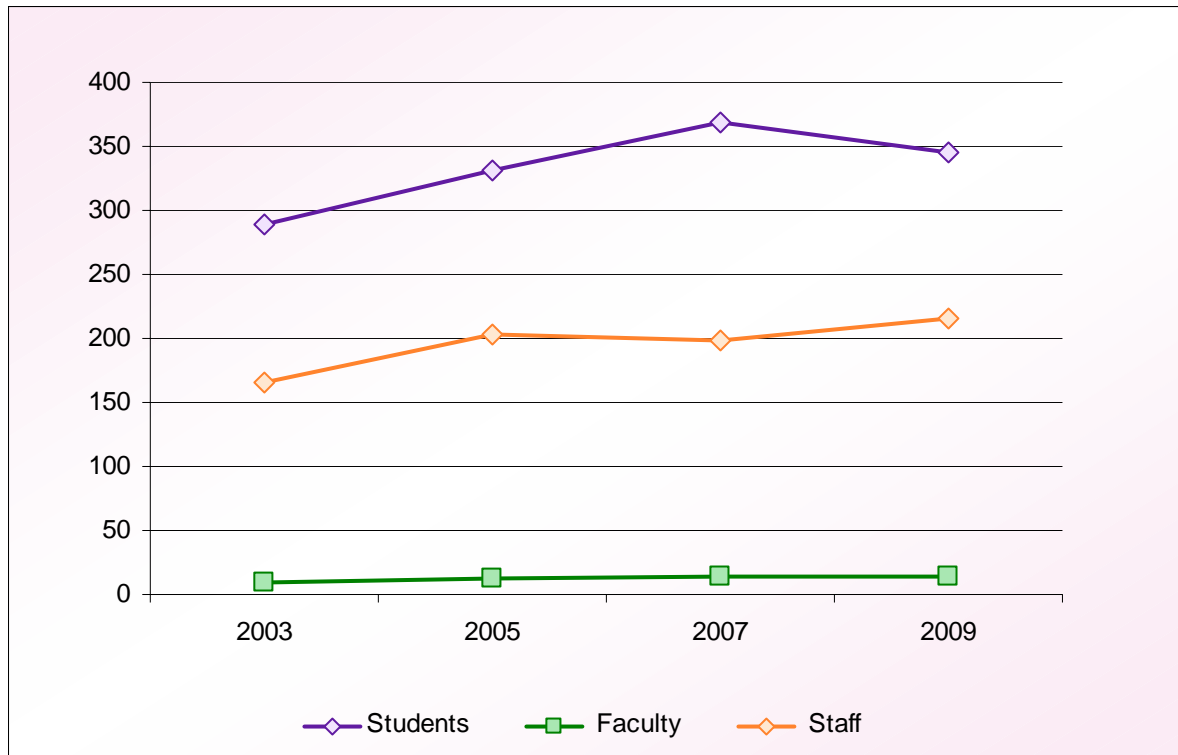
MSI/DSI = Minority Scholars Invitational / Diversity Scholars Invitational

**2004-2008 NATIVE AMERICAN EOP ENDOWED SCHOLARSHIP RECIPIENTS
TRIBAL AFFILIATION**

TRIBAL AFFILIATION	F	M	TOTAL
ALASKA ATHABASKAN	1		1
ALEUT	2		2
AM IND - NO DOC	4	2	6
AMERICAN INDIAN	1		1
COLVILLE	1		1
COWLITZ	1		1
GRANDE RONDE	1		1
HAIDA		1	1
MAKAH	1		1
PEORIA		1	1
PONCA		1	1
SENECA NATION	1		1
TLINGIT	2		2
YAKIMA	1		1
TOTAL NATIVE AMERICAN	16	5	21

**Distribution of Native American Students (Seattle), Faculty (Seattle)
and Staff (All Campuses) at the UW
2003 to 2009**

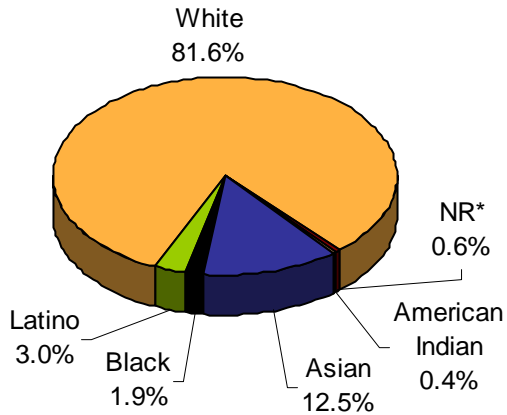
Year	Students (Undergrad)	Faculty (Ladder)	Staff (Classified & Prof)
2003	289	10	166
2005	331	13	203
2007	368	14	199
2009	345	14	215



FACULTY
Professorial and Instructional
(N=4,101)

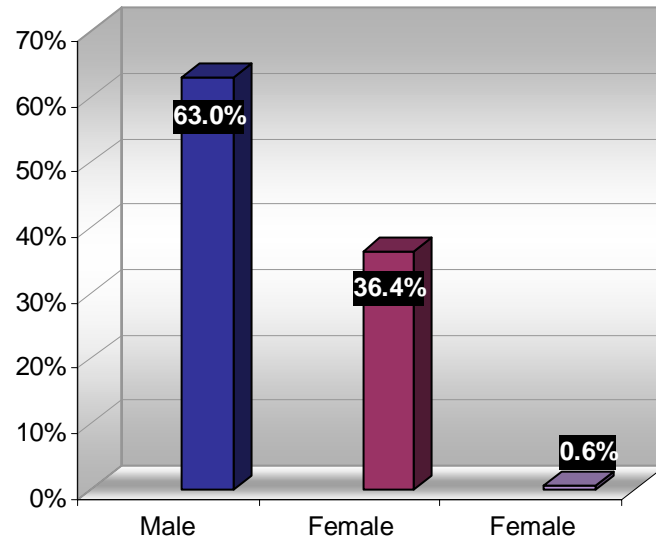
Faculty Statistics by Rank	Total	Male	Female	American Indian	Asian	Black	Latino	White	NR*
Professorial Faculty	3,776	2,453	1,302	14	481	73	114	3,073	21
Professor	1,707	1,297	407	1	123	27	29	1,524	3
Associate Professor	1,122	668	450	10	155	19	38	896	4
Assistant Professor	947	488	445	3	203	27	47	653	14
Instructional Faculty	325	131	192	3	33	5	8	274	2
Principal Lecturer	6	1	5	0	0	0	0	6	0
Senior Lecturer	183	75	108	1	12	3	3	164	0
Lecturer	136	55	79	2	21	2	5	104	2
Sub Total Faculty	4,101	2,584	1,494	17	514	78	122	3,347	23

ETHNIC DISTRIBUTION



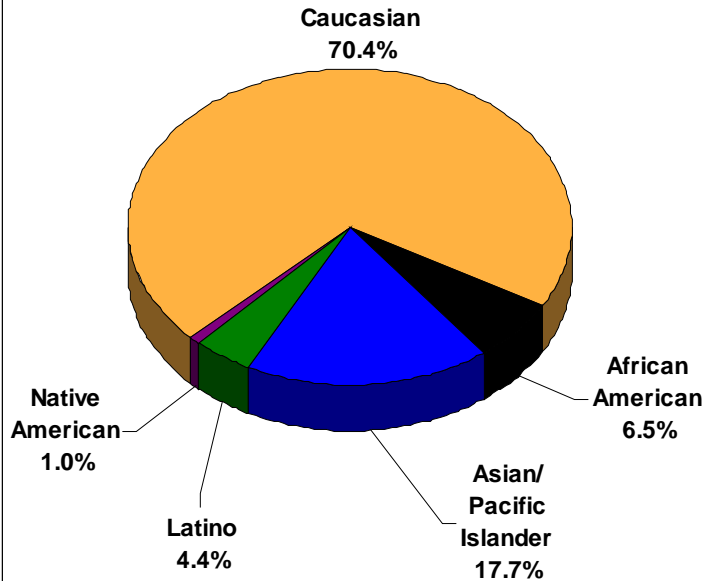
NR* = Not Reported

GENDER DISTRIBUTION



UW STAFF WORKFORCE PROFILE

PROFESSIONAL & CLASSIFIED STAFF
Autumn 2007 (N = 20,058)



EXECUTIVES, ADMINISTRATORS AND MANAGERS
Autumn 2007 (N = 492)

