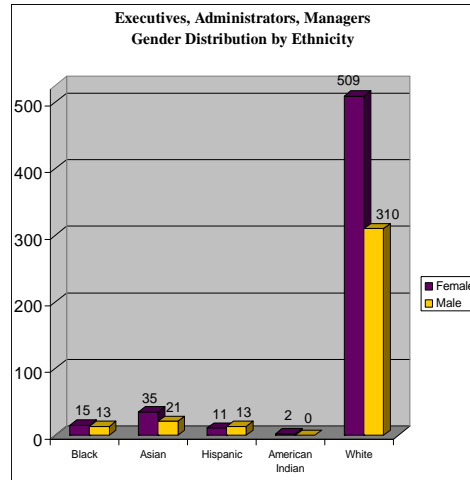
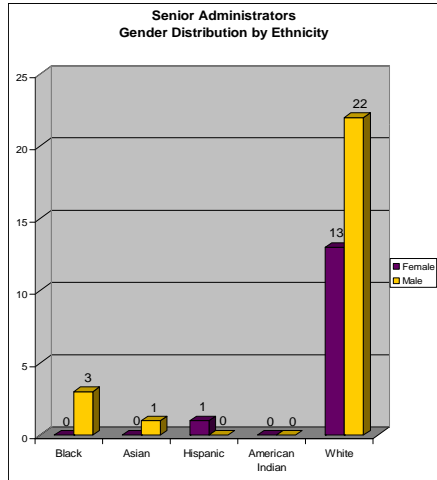


OVERVIEW

<ul style="list-style-type: none"> ◆ Demographics <ul style="list-style-type: none"> ◆ Senior Administrators ◆ Professional Staff ◆ Faculty ◆ Enrollment Pyramid ◆ Admission Trends <ul style="list-style-type: none"> ◆ Freshmen ◆ Transfers ◆ Tribal Breakdown ◆ High Schools of Origin ◆ 2-year/4-year Institutions of Origin ◆ Retention/Attrition Rates <ul style="list-style-type: none"> ◆ Freshmen ◆ Transfers 	<ul style="list-style-type: none"> ◆ Graduation Rates <ul style="list-style-type: none"> ◆ Freshmen ◆ Transfers ◆ Graduation Trends <ul style="list-style-type: none"> ◆ Popular Majors <ul style="list-style-type: none"> ◆ Undergraduates ◆ Graduates/Professional ◆ Outreach Initiatives ◆ Recruitment Initiatives ◆ Notable Notes from the VP ◆ Recommendations for the Future
---	--

Office of Minority Affairs
March 25, 2004

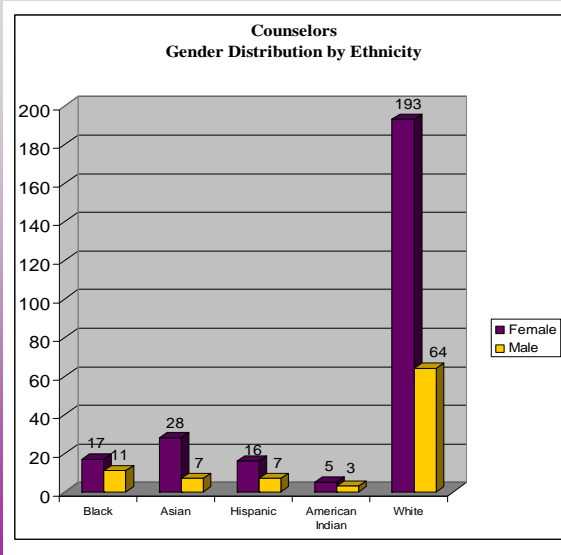
PROFESSIONAL STAFF PROFILE



Source: UW Equal Opportunity Office (2002)
Office of Minority Affairs
March 25, 2004

2

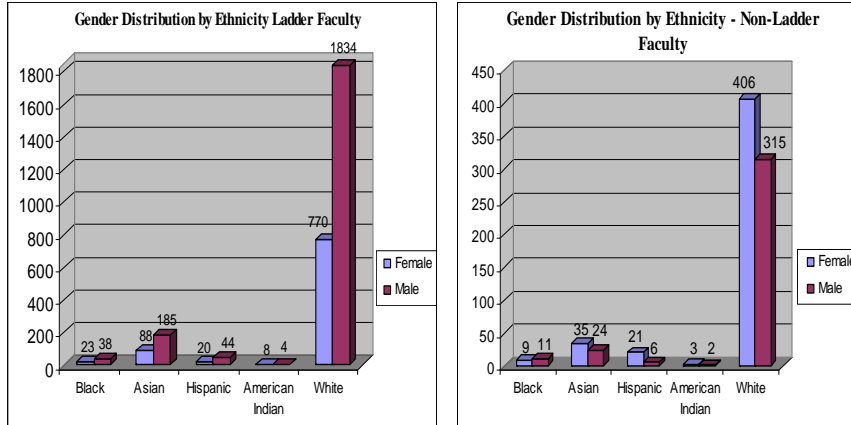
PROFESSIONAL STAFF PROFILE



Source: UW Equal Opportunity Office (2002)
Office of Minority Affairs
March 25, 2004

3

UW FACULTY ETHNIC & GENDER DISTRIBUTION



Source: UW Equal Opportunity Office (2002)
Office of Minority Affairs
March 25, 2004

4

Faculty Titles By Job Group, By Gender

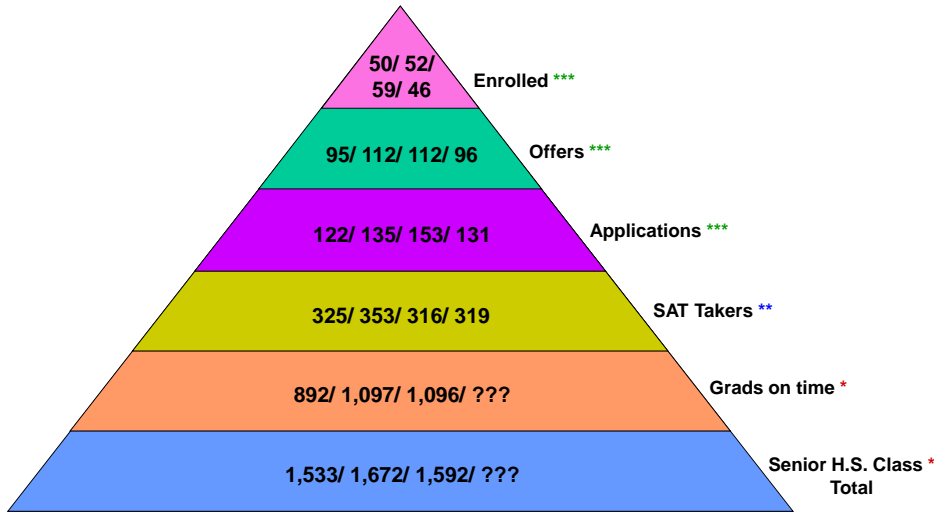
Ladder	Female	Male
Professor	218	843
Associate Professor	192	282
Assistant Professor With Tenure	0	2
Professor Without Tenure	70	275
Associate Professor Without Tenure	121	291
Assistant Professor Without Tenure	116	184
Assistant Professor	183	220
Acting Assistant Professor	9	8
Ladder Faculty - Total	909	2105
	30%	70%

Non-Ladder	Female	Male
Lecturer Full-time	72	59
Senior Lecturer	81	63
Teaching Associate	114	55
Senior Artist in Residence	0	1
Artist in Residence	0	9
Lecturer Part-time	207	171
Non-Ladder Faculty - Total	474	358
	57%	43%

Source: UW Equal Opportunity Office (2002)

5

Washington State's Native American Freshman UW Enrollment Pyramid
Enrollment Period: 2000, 2001, 2002, 2003



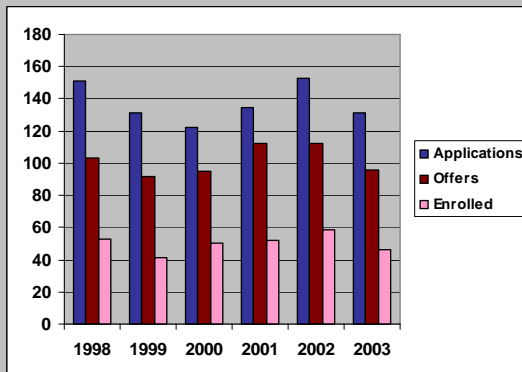
Sources: * OSPI Graduation & Drop-out Statistics, School Years 1999-2000, 2000-2001, 2001-2002
 ** College Board Enrollment Planning
 *** UW Data Management
 ??? Data is not available

Office of Minority Affairs
March 25, 2004

6

Comparative Admissions Trends
American Indian Freshmen (1998-2003)

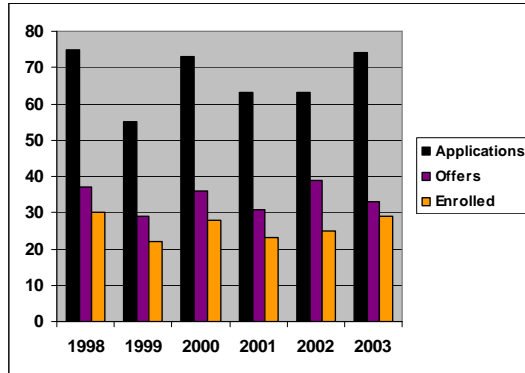
Acad Year	Applications	Offers	Enrolled
1998	151	103	53
1999	131	92	41
2000	122	95	50
2001	135	112	52
2002	153	112	59
2003	131	96	46



7

Comparative Admissions Trends American Indian Transfers (1998-2003)

Acad Year	Applications	Offers	Enrolled
1998	75	37	30
1999	55	29	22
2000	73	36	28
2001	63	31	23
2002	63	39	25
2003	74	33	29



8

EOP & Non-EOP Enrolled Students as of the 10th Day of Autumn, 2003

NATIVE AMERICAN ETHNIC SUB GROUP	EOP Students			Non-EOP Students			EOP & Non-EOP		ALL UW
	Female	Male	Total	Female	Male	Total	Female	Male	
ALASKA INDIAN	1		1				1	0	1
ALASKA NATIVE	2	1	3	1		1	3	1	4
ALEUT	1		1	2	1	3	3	1	4
AM IND - NO DOC	39	25	64	36	36	72	75	61	136
AMERICAN INDIAN		1	1		1	1	0	2	2
AMERIND BLACK	1		1				1	0	1
AMERIND WHITE	2	2	4	3	1	4	5	3	8
ATHNA					1	1	0	1	1
BLACKFEET	1		1				1	0	1
BLACKFOOT SIOUX		1	1				0	1	1
BRISTOL BAY					1	1	0	1	1
CANADIAN INDIAN		1	1	1		1	1	1	2
CHEHALIS	1	1	1	1		1	1	1	2
CHEROKEE	3	2	5	3	2	5	6	4	10
CHICKASAW	2	1	3				2	1	3
CHIPPEWA	1		1	1		1	2	0	2
COAST MIWOK					1	1	0	1	1
COLVILLE	2	3	5	1	1	2	3	4	7
COUER D'ALENE		1	1				0	1	1
COWLITZ	1		1	1		1	2	0	2
CREE	1		1				1	0	1
CROW		1	1				0	1	1
DELAWARE				1		1	1	0	1
ESKIMO	2	2	4				2	2	4
HAIDA	1	1	2				1	1	2
ISLETA	1		1				1	0	1
LUMMI	1		1				1	0	1
MAKAH	3	2	5		1	1	3	3	6
MENOMINEE	1		1				1	0	1
MOHAWK					1	1	0	1	1
NANTICOKE	1		1				1	0	1
NAVAJO	1		1	1		1	2	0	2

9

EOP & Non-EOP Enrolled Students as of the 10th Day of Autumn, 2003

NATIVE AMERICAN ETHNIC SUB GROUP	EOP Students			Non-EOP Students			EOP & Non-EOP		ALL UW
	Female	Male	Total	Female	Male	Total	Female	Male	
NEZ PERCE	1		1				1	0	1
NOOKSACK		1	1				0	1	1
NORTHERN ARAPAHO		1	1				0	1	1
OGALA SIOUX	1	1	2				1	1	2
PEORIA		1	1				0	1	1
PINE RIDGE SIOUX		1	1				0	1	1
PONCA		3	3				0	3	3
POTAWATOMIE				1	1	2	1	1	2
PUYALLUP		1	1				0	1	1
QUILEUTE	1		1				1	0	1
QUINAULT	1		1				1	0	1
RED CLIFF CHIPPEWA		1	1				0	1	1
SEALASKA	2		2				2	0	2
SHAWNEE				1		1	1	0	1
SKOKOMISH	1		1				1	0	1
SPOKANE		1	1				0	1	1
SUQUAMISH	1		1				1	0	1
SWINOMISH	1		1				1	0	1
TLINGIT	3	4	7	1	1	2	4	5	9
TSIMSHIAN	2		2	1		1	3	0	3
TULALIP		1	1				0	1	1
TURTLE MOUNTAIN		1	1				0	1	1
UPPER SKAGIT	1	1	2				1	1	2
WALKER RIVER	1		1				1	0	1
WARM SPRINGS	1		1				1	0	1
WENATCHEE				1		1	1	0	1
WHITE AMERIND	2	1	3	2	1	3	4	2	6
WHITE AMERIND-1 TRB	8	1	9	4	6	10	12	7	19
WHITE ASN IND-1 TRB				1	1	1	0	1	1
YAKIMA	5	3	8				5	3	8
YAVAPAI APACHE				1	1	1	0	1	1
T O T A L	102	71	173	63	58	121	165	129	294

10

**1999-2003 AMERICAN INDIAN ENROLLEES* BY HIGH SCHOOL
TOP 49 FEEDER HIGH SCHOOL**

HIGH SCHOOL	TOTAL	HIGH SCHOOL (cont'd)	TOTAL
WHITE SWAN HIGH SCHOOL	8	CENTRAL KITSAP HIGH SCHOOL	2
MARYSVLE-PILCHUCK HIGH SCHOOL	5	CHIEF SEALTH HIGH SCHOOL	2
MOUNTLAKE TERRACE HIGH SCHOOL	5	CURTIS SENIOR HIGH SCHOOL	2
ROOSEVELT HIGH SCHOOL	5	EDMONDS/WOODWAY HIGH SCHOOL	2
BENJAMIN FRANKLIN HIGH SCHOOL	4	EPHRATA SENIOR HIGH SCHOOLCH	2
BOTHELL SENIOR HIGH SCHOOL	4	FRANKLIN PIERCE HIGH SCHOOL	2
DECATUR HIGH SCHOOL	4	HERITAGE HIGH SCHOOL	2
GONZAGA PREP SCHOOL	4	LAKES HIGH SCHOOL	2
HENRY FOSS HIGH SCHOOL	3	LEWIS & CLARK HIGH SCHOOL	2
KENTLAKE HIGH SCHOOL	3	MEADOWDALE SR HIGH SCHOOL	2
MEAD SR HIGH SCHOOL	3	MERCER ISLAND SR HIGH SCHOOL	2
NEAH BAY HIGH SCHOOL	3	NOOKSACK VALLEY HIGH SCHOOL	2
NEWPORT HIGH SCHOOL	3	O DEA HIGH SCHOOL	2
OMAK SR HIGH SCHOOL	3	PALM DESERT HIGH SCHOOL	2
REDMOND HIGH SCHOOL	3	PENINSULA HIGH SCHOOL	2
SEATTLE PREP/MATEO RICCI	3	PLUMMER HIGH SCHOOL	2
SEQUIM HIGH SCHOOL	3	RENTON HIGH SCHOOL	2
SHELTON HIGH SCHOOL	3	SHOREWOOD HIGH SCHOOL	2
SOUTH WHIDBEY HIGH SCHOOL	3	SKYLINE HIGH SCHOOL	2
AUSTIN E LATHROP HIGH SCHOOL	2	SOUTH KITSAP HIGH SCHOOL	2
BLANCHET HIGH SCHOOL	2	TOPPENISH SENIOR HIGH SCHOOL	2
BOZEMAN SENIOR HIGH SCHOOL	2	UNIVERSITY HIGH SCHOOL	2
C A LINDBERGH HIGH SCHOOL	2	WENATCHEE HIGH SCHOOL	2
CAPITAL HIGH SCHOOL	2	WEST SEATTLE HIGH SCHOOL	2
CEDARCREST HIGH SCHOOL	2		

Source: UW Student Database
Office of Minority Affairs
March 25, 2004

* Enrollees came from approximately 160 High School
** High School that have OMA site counselors

11

**1999-2003 AMERICAN INDIAN ENROLLEES* BY 2-YEAR & 4-YEAR INSTITUTIONS
TOP 18 FEEDER INSTITUTIONS**

TRANSFER INSTITUTIONS	TOTAL	TRANSFER INSTITUTIONS (cont'd)	TOTAL
SHORELINE COMM COLL	18	PENINSULA COLL	4
BELLEVUE COMM COLL	11	WENATCHEE VALLEY COLL	3
NORTH SEATTLE CC	8	HERITAGE COLLEGE	2
PIERCE COLLEGE	7	NEW MEXICO	2
SEATTLE CENTRAL CC	7	SPOKANE COMM COLL	2
GREEN RIVER CC	6	TACOMA COMM COLL	2
EDMONDS COMM COLL	4	UNIVERSITY OF UTAH	2
EVERETT COMM COLL	4	WASH STATE UNIV	2
HIGHLINE COMM COLL	4	YAKIMA VALLEY COMM COLL	2

* Enrollees came from 45 2-year and 4-year Institutions

Source: UW Student Database
Office of Minority Affairs
March 25, 2004

12

Average Freshman Retention Rates (1998-2001 cohorts)

Washington State HEC Board 25 Peer Institutions	Retention Rates
University of Virginia	97%
University of California, Los Angeles	97%
Cornell University, Statutory Colleges	96%
University of Michigan, Ann Arbor	96%
University of North Carolina, Chapel Hill	95%
University of California, San Diego	94%
University of California, Irvine	93%
University of Florida	92%
University of Wisconsin, Madison	91%
University of California, Davis	91%
University of Washington	90%
University of Washington Under-Represented Minorities (URM)	89%
Texas A&M University, College Station	89%
Michigan State University	89%
University of Pittsburgh	87%
University of Washington Native Americans	85%
Ohio State University	85%
University of Iowa	84%
University of Missouri, Columbia	84%
University of Minnesota, Twin Cities	83%
University of Kentucky	79%
University of Hawaii	78%
University of Illinois, Chicago	78%
University of Arizona	77%
University of Utah	75%
University of Cincinnati	73%
University of New Mexico	72%

* Source: US News & World Report "America's Best College" 2004 Edition (2003)

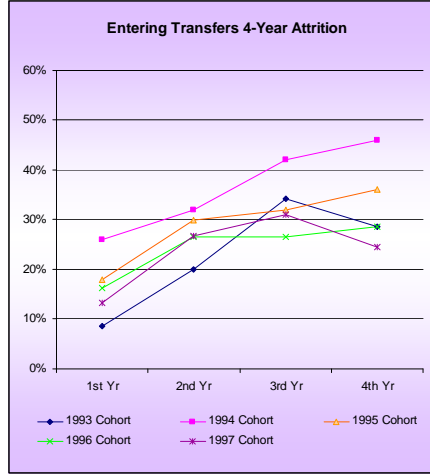
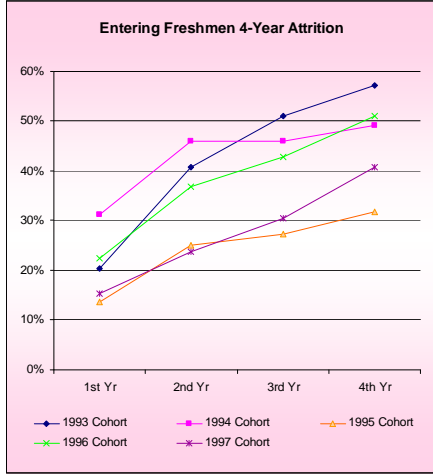
** Source: UW Student Data Base & IC Data Base (IC User covered 3 quarters or more and data contained only Summer / Autumn Entrants).

Office of Minority Affairs
March 25, 2004

13

4-Year Attrition Rates for UW Native American Enrollees
Enrollment Period: 1993-1997

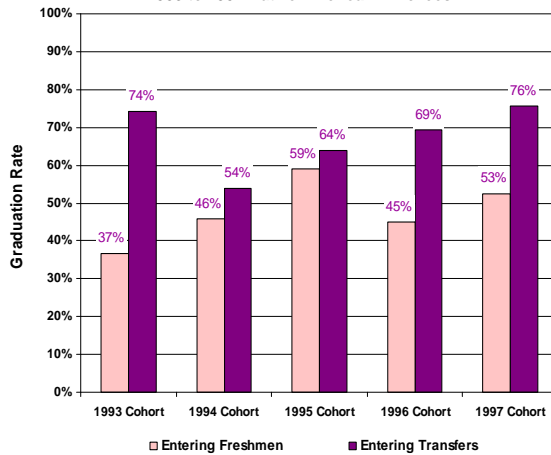
FRESHMEN	Cohort	1st Yr	2nd Yr	3rd Yr	4th Yr	TRANSFERS	Cohort	1st Yr	2nd Yr	3rd Yr	4th Yr								
1993 Cohort	49	10	20%	20	41%	25	51%	28	57%	1993 Cohort	35	3	9%	7	20%	12	34%	10	29%
1994 Cohort	61	19	31%	28	46%	28	46%	30	49%	1994 Cohort	50	13	26%	16	32%	21	42%	23	46%
1995 Cohort	44	6	14%	11	25%	12	27%	14	32%	1995 Cohort	50	9	18%	15	30%	16	32%	18	36%
1996 Cohort	49	11	22%	18	37%	21	43%	25	51%	1996 Cohort	49	8	16%	13	27%	13	27%	14	29%
1997 Cohort	59	9	15%	14	24%	18	31%	24	41%	1997 Cohort	45	6	13%	12	27%	14	31%	11	24%



Source: UW Student Database
Office of Minority Affairs
March 25, 2004

14

UW 6-Year Graduation Rates
1993 to 1997 Native American Enrollees



COHORT YR	FRESHMEN			TRANSFERS		
	Cohort	6-Yr Grad	% Grad Rate	Cohort	6-Yr Grad	% Grad Rate
1993	49	18	37%	35	26	74%
1994	61	28	46%	50	27	54%
1995	44	26	59%	50	32	64%
1996	49	22	45%	49	34	69%
1997	59	31	53%	45	34	76%
TOTAL	262	125	48%	229	153	67%

Source: UW Student Database
Office of Minority Affairs
March 25, 2004

15

**Mean 6-Year Graduation Rates
1993-1996 Native American Freshmen Cohorts**

WASHINGTON STATE HEC BOARD PEER INSTITUTIONS	Cohort	Grad Rate
UNIVERSITY OF CALIFORNIA, LOS ANGELES	145	75%
UNIVERSITY OF VIRGINIA	23	74%
UNIVERSITY OF CALIFORNIA, SAN DIEGO	94	74%
TEXAS A&M UNIVERSITY, COLLEGE STATION	81	67%
UNIVERSITY OF MICHIGAN	149	64%
UNIVERSITY OF CALIFORNIA, IRVINE	45	62%
UNIVERSITY OF CALIFORNIA, DAVIS	147	56%
CORNELL UNIVERSITY	67	55%
UNIVERSITY OF FLORIDA	44	55%
UNIVERSITY OF MISSOURI, COLUMBIA	57	53%
UNIVERSITY OF IOWA	54	50%
UNIVERSITY OF NORTH CAROLINA, CHAPEL HILL	94	49%
UNIVERSITY OF WASHINGTON	203	46%
UNIVERSITY OF KENTUCKY	27	44%
MICHIGAN STATE UNIVERSITY	176	43%
UNIVERSITY OF HAWAII, MANOA	7	43%
OHIO STATE UNIVERSITY	77	42%
UNIVERSITY OF WISCONSIN, MADISON	95	40%
UNIVERSITY OF UTAH	22	32%
UNIVERSITY OF PITTSBURGH	17	29%
UNIVERSITY OF ARIZONA	464	25%
UNIVERSITY OF MINNESOTA, TWIN CITIES	108	24%
UNIVERSITY OF NEW MEXICO	320	21%
UNIVERSITY OF ILLINOIS AT CHICAGO	27	19%
UNIVERSITY OF CINCINNATI	22	18%

Source: NCAA Website and UW Student Database
Office of Minority Affairs
March 25, 2004

16

**Selected Undergraduate Degree Majors Earned by Native American Students
Period: Autumn 1992 to Summer 2003**

DEGREE MAJOR	BACHELORS	DEGREE MAJOR	BACHELORS
Business Administration	96	Forest Res (Forest Engr)	3
Accounting	22	Medical Technology	3
Info Systems	7	Oceanography	3
Civil Engineering	13	Linguistics	1
Mechanical Engineering	11	Zoology	29
Electrical Engineering	9	Biology	21
Aero & Astro Engineering	6	Math	7
Chemical Engineering	5	Biochemistry	4
Technical Communication	4	Chemistry	4
Metallurgical Engineering	2	Geology	4
Ceramic Engineering	1	Microbiology	4
Industrial Engineering	1	Botany	3
English	62	Physics	3
Art	25	Psychology	92
American Ethnic Studies	10	Political Science	69
Drama	8	Sociology	49
Philosophy	6	Anthropology	42
Comparative Hist of Ideas	5	History	36
Music	4	Communication	29
Comparative Literature	2	International Studies	14
Dance	2	Economics	13
Social Welfare	19	Geography	13
Nursing	15	Society Justice	8
Spanish	6	Computer Science	5
Physical Therapy	5	Women Studies	5
French	4	Speech Communication	3
Environmental Health	3	Computer Engineering	2
Fisheries	3		

Source: UW Student Database
Office of Minority Affairs
March 25, 2004

17

**Selected Graduate & Professional Degree Majors Earned by Native American Students
Period: Autumn 1992 to Summer 2003**

DEGREE MAJOR	MASTERS
Business Administration	20
Accounting	2
Electrical Engineering	5
Civil Engineering	3
Mechanical Engineering	3
Aero & Astro Engineering	2
Technical Communication	1
English	5
Art	3
Philosophy	2
Comparative Literature	1
Education	20
Nursing	15
Law	7
Forest Res (Forest Engr)	4
Architecture	3
Environmental Health	2
Fisheries	1
Chemistry	1
Physics	1
Social Work	47
History	4
Psychology	4
Anthropology	2
Epidemiology	2
Geography	2
Political Science	1

DEGREE MAJOR	DOCTORS
Bioengineering	1
Electrical Engineering	1
Mechanical Engineering	1
English	2
Law (Juris Doctor)	56
Dentistry	5
Education	5
Social Welfare	2
Fisheries	1
Forest Res (Forest Engr)	1
Linguistics	1
Nursing	1
Pharmacy (PharmD)	1
Biochemistry	1
Microbiology	1
Zoology	1
Medicine	45
Psychology	3
Anthropology	2
History	2

Source: UW Student Database
Office of Minority Affairs
March 25, 2004

18

Native American Still Enrolled as of Autumn 2003 who do not have UW Degree

MAJORS	GRADUATE	PROFESSIONAL	TOTAL
Aquatic and Fishery Sciences	1		1
Architecture	3		3
Art History	1		1
Biostatistics	1		1
Business Administration (Executive)	1		1
Chemical Engineering	1		1
Communication	2		2
Education	1		1
Education (Curriculum & Instruction)	1		1
Education (Educ Leadership & Policy Std)	2		2
Education, Evening Degree Program	1		1
English (Creative Writing)	1		1
Geography	1		1
Health Services	3		3
Information Management	1		1
Law		9	9
Library & Information Science	2		2
Mechanical Engineering	1		1
Medicine		10	10
Nursing	2		2
Oral Medicine	1		1
Physics	1		1
Psychology (Clinical Psychology)	1		1
Social Work	4		4
Social Work (Evening Degree Program)	1		1
Urban Design & Planning	1		1
Zoology	1		1

Source: UW Student Database
Office of Minority Affairs
March 25, 2004

19

OUTREACH INITIATIVES - 1

Yakima Valley GEAR UP
Loueta Johnson, Director

1. **Scope of Services:** In-school and after-school programs designed to enhance the child's learning day, trained tutors, mentors, student portfolios with college and career plans, academic and career planning, information on college and training programs, community service activities, and involvement of parents and family members.
2. **Students Served:** Yakima Valley GEAR UP will serve 6,590 students during the 2003-2004 school year
3. **Grades Served:** 6-10 (Yakama Nation Tribal School, grades 6-12)
4. **Native American students served:**
 - Grades 6-8: 367 students or 9.1%
 - Grades 9-12: 294 students or 11.5%
5. **School Partners:**

Grandview	Granger
Mabton	Mt. Adams
Sunnyside	Toppenish
Yakama Nation Tribal School	Zillah
6. **Community Partners:**
 - Healthy Community Alliance (HCA)
 - Northwest Learning and Achievement Group (NLA)
 - Northwest Community Action Center (NCAC)
 - Yakima Valley Community College (YVCC)

Office of Minority Affairs
March 25, 2004

20

OUTREACH INITIATIVES - 2

Talent Search
of the Office of Minority Affairs
Julian Argel, Director

1. **Scope of Services:** The Talent Search program encourages low income and potential first generation college attendees to consider a variety of post-secondary education options, sponsors workshops, presentations, and campus visits with a focus on admissions, financial aid, college life, and aspirations for students and families. The purpose of the project is to help students get "college-ready."
2. **Students Served:** Funded through the U.S. Department of Education, the project has been funded since 1994 to serve 650 participants served each year since 1994.
3. **Native American students:** 149
4. **Grades Served:** 6-12
5. **School Districts that Talent Search works:**

Mt. Adams	Granger	Tulalip Heritage
Wapato	Yakama Tribal	Sedro Wooley
Toppenish	Marysville	Mt. Vernon
6. **Personnel:**
 - ½ time Director
 - ½ Administrative Coordinator
 - Assistant Director/Counselor
 - 1 Counselor in Western Washington
 - 1 Counselor in Eastern Washington
 - 1 Counselor Intern in Eastern Washington

Office of Minority Affairs
March 25, 2004

21

OUTREACH INITIATIVES - 3

Educational Opportunity Center of the Office of Minority Affairs Julian Argel, Director

1. **Scope of Services:** The Educational Opportunity Center is a new program that encourages adult low income and potential first generation college attendees to consider a variety of post-secondary education options, sponsors workshops, presentations, and campus visits with a focus on admissions, financial aid, college life, and aspirations for students and families. The purpose of the project is to help adults, 19 and older, get "college-ready."
2. **Students Served:** Funded through the U.S. Department of Education for 5 years, the project has been funded since 2002 to serve 1,000 participants served each year.
3. **Native American students:** 69
4. **Population to be Served:** Adults 19 and older who are "low income" and "potential first generation college attendees" located in King County.
5. **Agency Partners:**
 - El Centro de la Raza
 - NewHolly Campus (a HUD re-development)
 - Seattle Indian Health Board (SIHB)
6. **Personnel:**
 - ½ time Director
 - ½ Administrative Coordinator
 - 1 Counselor at El Centro de la Raza
 - 1 Counselor at NewHolly Campus
 - 1 Counselor at Seattle Indian Health Board

Recruitment Initiatives

- ▶ Implemented a parent component as part of our outreach programming.
- ▶ Native American Welcome Dinner for new and returning students.
- ▶ Native American Student Day and Overnight Program had 160 participants. They represented 10 school districts and three tribal schools. Tribal leaders from Spokane, Colville and Yakama were present. A traditional dinner with cultural workshops was held the night before.
- ▶ Native American Transfer and Graduate Day for Native American community college and graduate students from across the state; 40 students participated and 15 UW departments were represented.
- ▶ New Native American Campus Resource Booklet listing Native faculty, staff, student organizations and campus advocates.
- ▶ Participated in community events throughout the year such as Chief Seattle Days, Puyallup, Julyamsh, Muckleshoot, Yakama Nation and Daybreak Star Powwows, Makah Days, ATNI and other conferences.
- ▶ Participated in College Fairs such as Yakama Nation, Everett Community College Coastal Gathering, AISES, Native Heritage Month.
- ▶ Hired five Native American student ambassadors: Elese Washines -Yakama, Majorie James-Tulalip, Precious Aure - Nootsack and Samoan, Tyson Parr - Coeur D'Alene on leave, Jim LaRoche - Lower Brule.
- ▶ Of those high achieving resident freshman recruited 2004-2005, nine Native American students received Diversity Scholarships for \$7,000/year for four years.

NOTABLE NOTES FROM OMA VP - 1

- * Additional funds directed towards Native American recruitment programs resulted in new programming such as Native American Transfer/Graduate Day.
- * Additional funds to provide temporary assistance from OMA Native American staff; Letoy Eike and Candace Fries to assist our recruiter, Nadine Bill, with application follow up and programming needs.
- * Fall quarter alone, we facilitated more than 30 visits to Washington, Montana, Oregon and Idaho. Including visits to school districts, tribal schools, tribal community programs and college fairs.
- * In response to the NAAB request, this year we spent more time working with community college students and designated staff. For the first time, we offered a program that focused on the Native American transfer students across the region as a means to increase our recruitment efforts. This event resulted in several of the participants applying for fall 2004.
- * Recruiter Nadine Bill spent one day a week at our UW Tacoma office to service the South Puget Sound Region tribes and school districts.
- * This year's (from Washington state only) Native American Diversity Scholars are:

Ms. Jamie Sease – Makah	Mr. Richard Miller - Blackfeet
Ms. Justus Hyatt – Choctaw	Ms. Jessica Flett - Spokane
Ms. Kali Albright – Chippewa	Ms. Brenda Ambrose -Yakama
Ms. Emma Noyes – Colville	Ms. Brenna Hesch - Tlingit and Haida
Mr. Michael Tillotson – Haida	
- They will each receive \$7,000/year for four years at the UW.
- * Three Native students were selected to be recognized at EOP celebration 2004. For the first time in history the Athletic Recognition awardee is Native, Andrea Lalum. Two Natives received endowed scholarships.

NOTABLE NOTES FROM OMA VP - 2

- * The assumption of administrative oversight of the Health Sciences Center for Minority Student Program by OMA.
- * The forging of a partnership with Seattle Central Community College to increase the number of underrepresented minorities in Health Science majors.
- * Native American Participants in the McNair Program
Christina Roberts 2000-2001 accepted to the University of Arizona, Graduate program in English
Jonathan Bauch 2001-2002
Janelle Sagmiller 2002-2003 accepted into the UC, San Francisco, doctoral program in Nursing
Kapiolani Laronal 2002-2003
Dangelei Fox 2003-2004 applying to graduate programs in Environmental Sciences
- * Native American Participants in the Early Identification Program (EIP)
Jessica Scott, Medical School, UW
Teresa Powers, graduate program in Communication, UW
Angela Picard, Graduate School of Public Affairs, UW
Ben Brigham, applying to UW School of Marine Affairs
Laura LaFrance, applying to UW School of Marine Affairs
- * Native American Students selected to participate in the Rome Program
Christina Roberts 2001
Dakotah Lane 2003
Elese Washines 2003
Precious Aure 2004

RECOMMENDATIONS FOR THE FUTURE - 1

- ✦ Implement new and innovative strategies for recruiting Native American students (with emphasis on parent involvement in the process)
- ✦ Increase both merit-based/need-based scholarship support and other types of financial aid
- ✦ Increase transfer recruitment and outreach staff in order to enhance community college programs
- ✦ Work on UW image as it relates to Native Americans
- ✦ Continue to engage Native parents and the greater Native American community (we need your help!)
- ✦ Increase substantially funding for student programming and expand the Ethnic Cultural Center's role in issues related campus climate
- ✦ Collaborate with colleges and academic units, i.e., American Indian Studies, Forestry, College of Engineering, etc. regarding outreach and retention of Native students

Office of Minority Affairs
March 25, 2004

26

RECOMMENDATIONS FOR THE FUTURE - 2

- ✦ Develop strategies to reduce the disproportionately high attrition rate of Native students
- ✦ Encourage Native American community input as it pertains to minority representation in the administration, professional staff, faculty, graduates/ professionals and undergraduates
- ✦ Expand mentoring to a more comprehensive program
- ✦ Develop a program that better prepares Native American to take SAT, as well as increases the number who actually take it.
- ✦ Increase substantially the number of Native American participants in EIP/McNair
- ✦ Develop an admissions workshop for community college transfer students
- ✦ Welcome specific recommendations from NAAB

Office of Minority Affairs
March 25, 2004

27



Acknowledgments

Arlyn Arquiza, Sr. Computer Spec., OMA Instructional Center

Keya Chisholm, Secretary, OMA Instructional Center