

UWEM "AT-A-GLANCE"

EMERGENCY MANAGEMENT

UW Tower, C140
Box 359531
Seattle, WA 98195-9531
tel 206.897.8000
24/7 duty officer: 206.765.7192

disaster@uw.edu
www.uw.edu/uwem

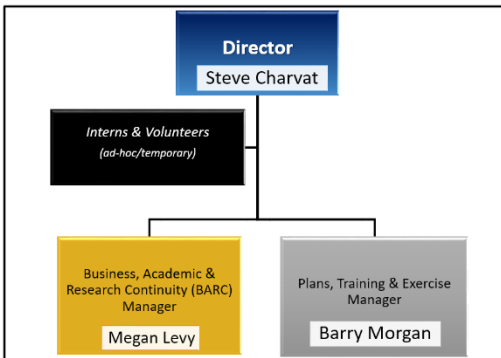
1. Program History: An independent office of emergency management was established in 2003 after the [2001 Nisqually earthquake](#), Merrill Hall [eco-terrorist firebombing](#) and [Educational Outreach fire](#). Prior to that, the responsibilities for disaster planning, response and recovery was distributed to various campus operational units – with limited success, visibility or effectiveness.

2. Program Administration:

- Day-to-day administration of overall program provided by UW Emergency Management ([UWEM](#)), a UW Facilities department
 - i. 3.0 FTEs (Director + 2 professional staff + interns)
 - ii. Annual budget ~\$447,000 (all general funds)
 - iii. Provides technical services to entire institution, including branch campuses and off-campus sites
 - iv. UWEM Staff are certified and nationally-recognized as industry experts in higher education EM
 - v. Provide full-service emergency management and business continuity services to students, faculty and staff
- Program authorities found in UW Administrative Policy Statements [13.1](#) (Emergency Management) and [13.2](#) (Business, Academic & Research Continuity)
- System-wide [Emergency Readiness Committee](#) (ERC) meets bi-monthly to review program & provide input to the program
- Approved [5-Year Strategic Plan](#) developed using national NFPA 1600 and EMAP structure and principles
- Use of Balanced Scorecard metrics and Lean tools since 2005
- Popular and active webpage (www.uw.edu/uwem) and [Facebook page](#) (FOLOW US NOW!)

3. Primary Institutional Hazards and Threats (Natural and Man-made):

- Earthquake (shallow, deep, subduction)
- Fire & Explosions
- Hazardous Materials Accidents and Releases
- Active Threat/Shooter (including workplace violence)
- Severe Weather (wind, rain, ice, snow and heat)
- Utility Disruptions/Outages (electric, water, sewer, IT, gas, telecommunications, steam)
- Communicable Disease Outbreak (pandemics/epidemics)
- Transportation Accidents
- Terrorism, including cyber
- Volcanic Eruption
- Flooding and Landslides



4. Sample UWEM Activities and Initiatives: (not mean to be all-inclusive)

- **Mitigation & Prevention**
 - i. UW was the first PAC-12 university certified by the National Weather Service as being “Storm Ready”
 - ii. UW’s Hazard Identification and Vulnerability Assessment (HIVA) published in 2003 and currently being updated
 - iii. UW’s [Hazard Mitigation Plan](#): Annex to the State’s Plan and updated every-other year (last update: 2015)
 - iv. Recipient of nearly \$4 million FEMA/DHS Grants for facility resilience and preparedness activities
 - v. [Seismic Resilient UW Work Group](#) established by Provost’s Office and chaired by UWEM Director (sunset in 2015)
 - vi. Member: UW’s Advisory Committee on Communicable Diseases.

- **Preparedness (Plans, Training and Exercises)**
 - i. Business, Academic and Research Continuity Program – supported by [Husky Ready](#), and online continuity planning tool from the Kauli Foundation. Free to all UW departments.
 - ii. UW [All-Hazards Emergency Management Plan](#): 2017 (updated biannually) as the foundation for all EM programs
 - iii. Ongoing access to free federal and state training opportunities, workshops and classes
 - iv. Participation in campus outreach events, including the popular *Wheel of Misfortune*, quarterly online newsletter
 - v. Annual functional and full-scale exercises in the EOC and quarterly drills for 130+ EOC responders
 - vi. Other planning and training activities with UW and community stakeholders (city, county, hospitals, transit agencies....)

- **Response**
 - i. UWEM 24/7 Duty Officer Program and Phone #
 - ii. Fully-equipped emergency management vehicle for incident field response and coordination with Police/Fire/EMS
 - iii. Mobile command post for extended responses
 - iv. 24/7 “hot” Emergency Operations Center (EOC) with redundant communications & power, breakout rooms and self-sustaining capabilities for 3+ days for 80 responders
 - v. 130 Senior UW managers/leaders trained as EOC cadre
 - vi. UWEM staff activate the EOC for every home football game and other large planned special events (i.e., Commencement)
 - vii. Unit Response Centers (URC) to support main EOC
 - viii. Opt-in UW-Alert (www.uwalert.org) campus notification system (w/ over 75,000 subscribers) and outdoor **BLUE** phones
 - ix. Core member of the UW’s Crisis Communications Team -- established for immediate notifications to campus community

- **Recovery**
 - i. After-Action Review/Reports Required for all Major Events and Incidents (including corrective action plans)
 - ii. UW works closely with City of Seattle, King County and State of Washington in coordinating post-disaster recovery information, claims, and d public assistance requests.