

# 35 TON

## WHL35TC75



The WHL35TC75 is a natural evolution of our popular 30-ton cranes. Higher lifting capacity and longer reach are obvious benefits of this design. The versatility of integrated out and down outriggers allows for crane set-up in space restricted areas. These cranes have a wider total spread than other outrigger styles and a dual control station design means the crane can be operated from either side.

### FEATURES

- 35-ton lifting capacity (47,000lbs at 10' radius)
- 85' tip height (fully extended)
- 3 section 75' fully proportional boom
- 32' retracted length
- 15,000 lb, 2 speed grooved drum planetary winch with integral brake, includes cable packer
- Out and down outriggers - 22'-2" max. spread
- Planetary drive rotation gear box
- Dual control console with platform

### BENEFITS

- High strength box construction, welded booms for maximum strength to weight ratio
- Standard audible capacity alert system
- Standard audible outrigger warning alarm

### OPTIONAL

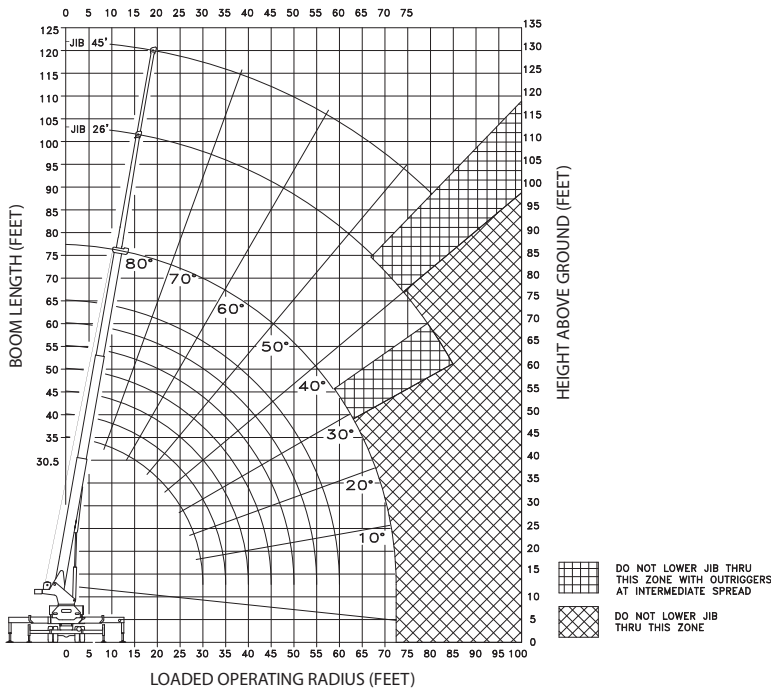
- Fixed swing around jib, stows along side of boom
- Snatch block and crane blocks for multi-part line operation
- Hydraulic tank heater
- Digital radio weight indicator
- Boom lights

# LOAD CHARTS AND SPECIFICATIONS

MAXIMUM RATED LOAD IN LBS. WITH OUTRIGGERS FULLY EXTENDED													FIXED JIB		26 / 45' TELESCOPIC JIB			
LOADED OPERATING RADIUS	LOADED BOOM ANGLE	RETRACTED BOOM LENGTH	LOADED BOOM ANGLE	BOOM LENGTH	LOADED BOOM ANGLE	BOOM LENGTH	LOADED BOOM ANGLE	BOOM LENGTH	LOADED BOOM ANGLE	BOOM LENGTH	LOADED BOOM ANGLE	EXTENDED BOOM LENGTH	LOADED BOOM ANGLE	FIXED JIB	LOADED BOOM ANGLE	JIB RETRACTED	LOADED BOOM ANGLE	JIB EXTENDED
FEET	°	30' 2"	°	35 ft	°	45 ft	°	55 ft	°	65 ft	°	74' 8"	°	26 ft	°	26 ft	°	45 ft
10	65	47,000	68	45,000	73	44,000	76	43,000										
12	60	41,000	65	40,000	71	39,000	74	38,000	77	37,000								
15	54	35,000	59	33,000	66	32,000	71	31,000	74	30,500	76	28,000						
20	40	26,000	49	25,500	59	25,000	65	24,500	69	24,000	72	23,000	77	8,750	77	8,500		
25	21	20,000	37	20,000	52	20,000	60	20,000	65	20,000	68	19,000	74	8,000	74	7,750	77	4,650
30			21	16,000	43	15,500	53	15,500	60	15,500	64	15,500	71	6,400	71	6,150	74	4,150
35					32	12,000	46	12,000	54	12,000	59	12,000	68	5,500	68	5,250	72	3,850
40					17	9,500	39	9,500	49	9,500	55	9,500	65	4,800	65	4,550	69	3,550
45							29	7,700	42	7,700	50	7,700	62	4,250	62	4,000	67	3,200
50							15	6,500	35	6,500	45	6,500	59	3,750	59	3,500	64	2,770
55									27	5,300	39	5,300	55	3,500	55	3,250	61	2,450
60									14	4,500	33	4,500	52	3,200	52	2,950	59	2,250
65											24	3,900	48	2,830	48	2,580	56	2,050
70											12	3,300	44	2,500	44	2,250	53	1,850
75													40	2,400	40	2,150	50	1,750
80													35	2,050	35	1,800	46	1,600
85													29	1,850	29	1,600	43	1,200
90																	40	750
		720		482		360		290		240		220		FIXED		DEDUCTIONS FOR STOWED JIB (LBS)		
		900		605		450		360		300		275		TELESCOPIC				

RATINGS ABOVE THE HEAVY LINE ARE BASED ON STRUCTURAL COMPETENCE AND NOT ON MACHINE STABILITY.

**NOTE:** Deductions must be made from rated loads for lifting accessories: fixed jibs, telescopic jibs, overhaul balls, load hooks, snatch blocks and load blocks.



Maximum Loads 5/8" Cable	
<b>1 Part Line</b>  9,000 lbs	<b>4 Part Line</b>  36,000 lbs
<b>2 Part Line</b>  18,000 lbs	<b>5 Part Line</b>  45,000 lbs
<b>3 Part Line</b>  27,000 lbs	<b>6 Part Line</b>  54,000 lbs



12155 - 154 Street  
 Edmonton, AB Canada T5V 1J3  
 Toll Free: 1 800 661 0378 | Fax: 780 455 6770

[www.weldco-hydralift.com](http://www.weldco-hydralift.com)

