

# SPRING PROMOTIONS 2020

SAVE ON A WIDE  
RANGE OF  
PARTS, SERVICES  
& EQUIPMENT!



# BLOOMIN' GOOD DEALS!



## Parts

NEW . REMAN . USED . AFTERMARKET

**NEVER MISS  
A DEAL!**

Sign up to  
receive our

**Parts & Service Flyer**  
for a chance to

**WIN a \$500\*** PARTS  
CREDIT.

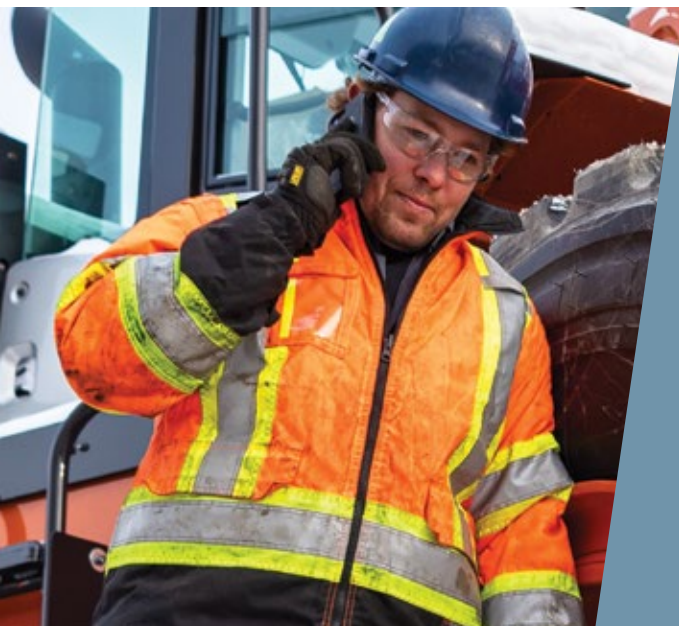
\*Select branch locations. Some restrictions apply.





# CANADA'S EXCLUSIVE HITACHI SUPPLIER FOR CONSTRUCTION EQUIPMENT.

Best pricing. All makes & models in stock.  
24/7 expert support. **ALWAYS.**



WE KNOW  
**D@WNT!M#**  
IS A FOUR LETTER WORD

Get **CRITICAL PARTS**  
at **CRITICAL TIMES.**

Wajax is service you  
can swear by, not about.

# SPRING HAS SPRUNG!

Book your pre-warranty expiry inspection now!  
**STARTING AT \$475!**

Our pre-warranty expiry program is  
intended to inspect your equipment  
prior to your standard manufacturer  
warranty or extended warranty expiring.

**SAVE MONEY &  
REDUCE DOWNTIME**

# SPRING

LINE UP IS READY FOR PICKING!

**NEW,  
USED OR LEASE.**



**ALL  
MAKES & MODELS  
AVAILABLE NOW!**



## DIG THIS DEAL!

### HITACHI ZX50U-5

Location: **Langley, BC**

Year: **2018**

SMU (HRS): **124**

Unit #: **18HI28534**

**\$84,415**

Factory Hydraulic Coupler Equipped  
Transferable Factory Warranty Balance



# SAVE BIG TIME ON NATIONAL PRODUCTS

A yellow mini excavator with rubber tracks is shown working on a hillside in a forest. The excavator is positioned on a dirt path, and its arm is raised. The background is a lush green forest with rolling hills under a clear blue sky.

SEE OUR MINI EXCAVATOR RUBBER TRACK  
AND COMPLETE ZX210-870 UNDERCARRIAGE SETS

**Add savings to your bottom line  
with aftermarket products  
that match OEM quality.**

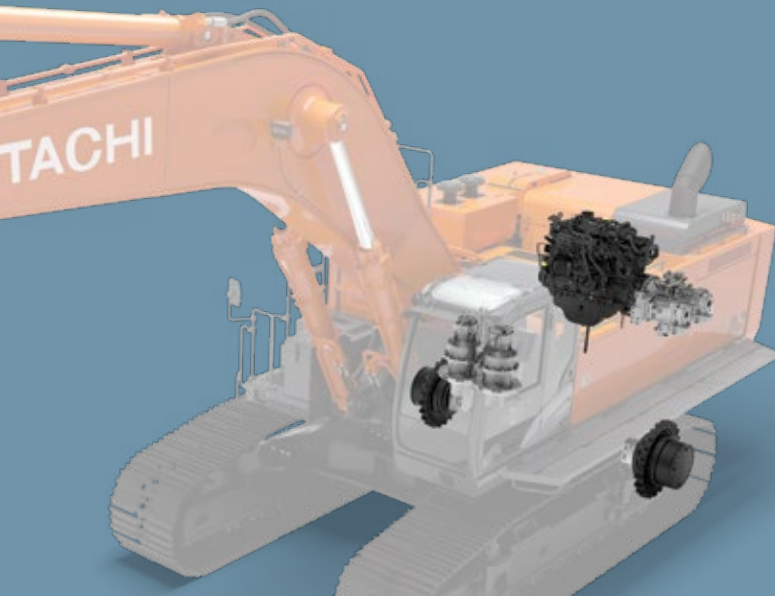




Turn over a new leaf.  
**SAVE** UP TO **75%**  
BY **purchasing**  
**HITACHI REMAN COMPONENTS.**

**Like new, only better.**

Trusted, knowledgeable, premium repair  
solutions without breaking the bank!



Each component:  
disassembled,  
cleaned & inspected.

1

2

Each part must meet OEM  
specifications. Wear parts  
are never reused.

3

Scrapped parts are replaced  
with OEM parts originally  
used in component.

4

All Reman components  
are updated, maximizing  
performance & durability.

5

Components are OEM  
tested after assembly.

6

Components are painted,  
packaged & stocked.

HITACHI  
**FREE** | **ZXLink™**  
**5 YEAR** | **SUBSCRIPTION\***

Now you can stay connected to your equipment 24/7/365!  
Machine Hour Tracking | Machine Location | Maintenance Tracking | Geofencing

\*With every new equipment purchase. Some restrictions may apply.

**SAVE on ZXLink™ renewals**

STARTING AT  
**\$289** FOR A  
**1 YEAR**  
**ULTIMATE**  
**SUBSCRIPTION**



# USED EQUIPMENT

## PREMIUM MACHINES YOU CAN COUNT ON!



### 2545D

LOCATION	SMU (HRS)
<b>Prince George, BC</b>	<b>12,692</b>
STOCK NUMBER	YEAR
<b>19M838255</b>	<b>2012</b>



**\$137,500**

## CATERPILLAR®

### 320

LOCATION	SMU (HRS)
<b>Mississauga, ON</b>	<b>8,760</b>
STOCK NUMBER	YEAR
<b>19M8238457</b>	<b>2014</b>



**\$92,000**

Check out our  
extensive stock of

# PREMIUM USED EQUIPMENT

AT  
[WAJAX.COM/USED-EQUIPMENT](http://WAJAX.COM/USED-EQUIPMENT)  
TODAY!



Call Today! 1 877 469 2529



# 4 MONTHS, ZERO PAYMENTS!

**ON ALL USED CONSTRUCTION EQUIPMENT!**

**FOR PREMIUM MACHINES  
YOU CAN COUNT ON.**

**SEE OUR EXTENSIVE COLLECTION OF USED EQUIPMENT!**

OFFER VALID UNTIL MARCH 31ST

**For a limited time only!**



## SET YOUR RATE & GROW SAVINGS

Reduce equipment bills with our  
**Preventative Maintenance Program.**

**Flexible plans  
to suit your needs!**

*Call us today.*

## GET THE COMPETITIVE EDGE.



**SAVE 25%** on Wheel  
Loader Bucket  
Cutting Edges



# COAST COAST

**OVER 100 BRANCHES**

Whenever & Wherever You Need Us



**OVER 1100  
SKILLED TECHNICIANS**  
&

**350 PARTS SPECIALISTS**  
servicing Canadian  
industry coast-to-coast.

Find a local branch near you.

**1 877 GO WAJAX**



**NEVER MISS  
A DEAL!** Sign up to  
receive our  
*Parts & Service Flyer*  
for a chance to

**WIN a \$500\*** PARTS  
CREDIT.

\*Select branch locations. Some restrictions apply.