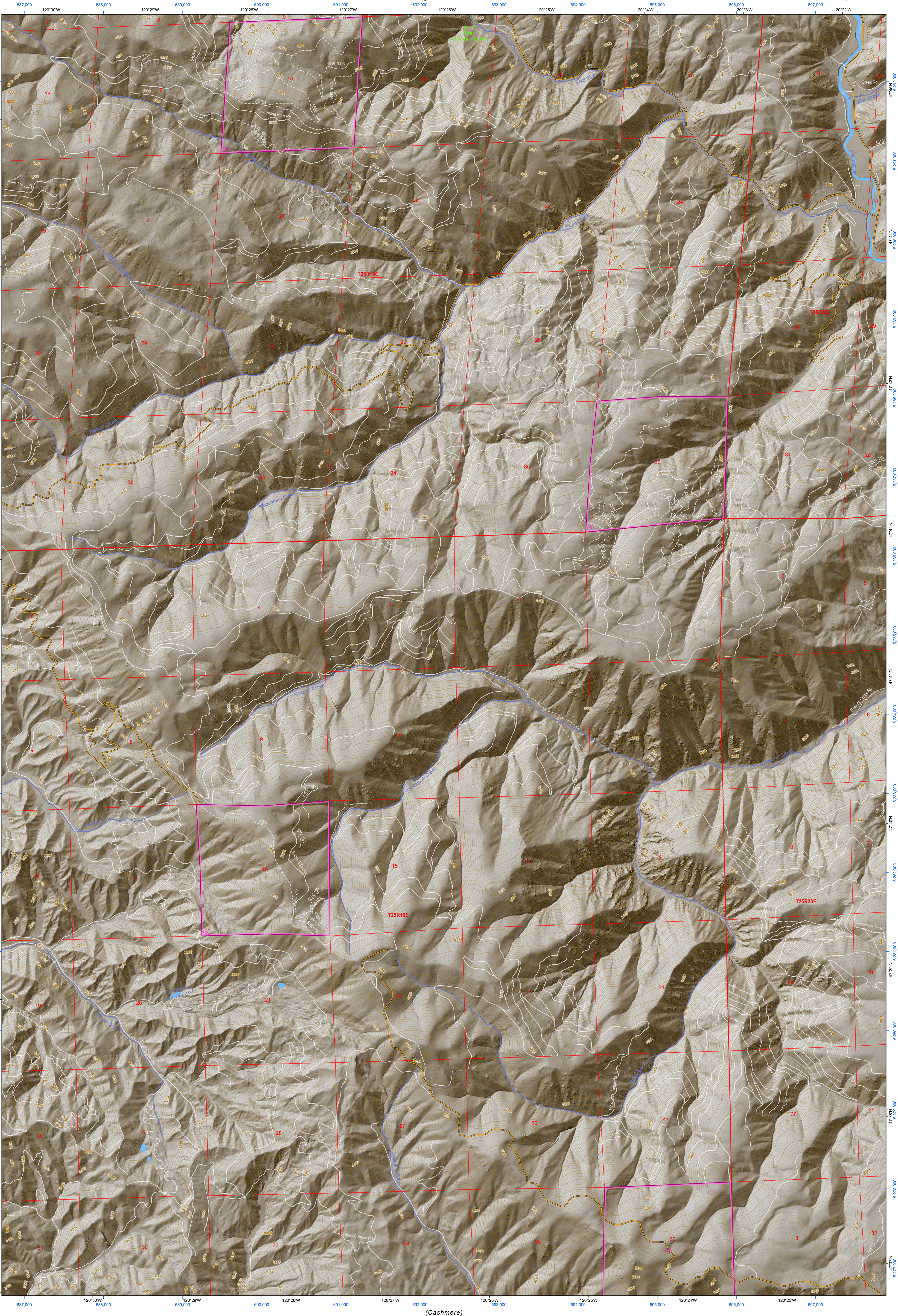


(Tye Mountain)



(Van Creek)

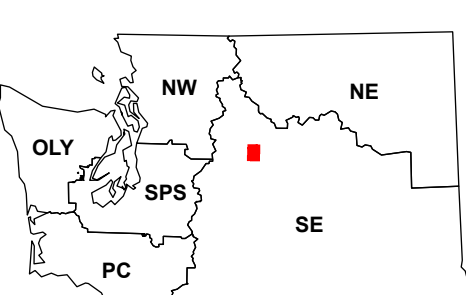
(Ardenvoir)

(Cashmere)

**Chumstick Mountain**

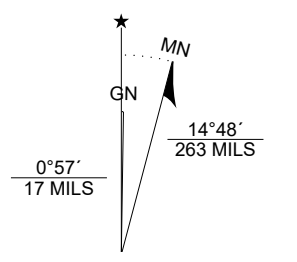
WADNR Hillshade 2025 Map Series (v20250606)

**Map Location**



Map Coordinate System:  
NAD 1983 NSRS2007 UTM Zone 10N  
Map Projection System: Transverse Mercator

Scan for WADNR map series library



Map Tick Marks:  
Latitude/Longitude WGS84 (in black)  
UTM NSRS2007 (in blue)



Produced by Washington State Department of Natural Resources (WADNR)  
Forest Resources Division, Forest Informatics Section, tcb490/csn490  
Intended for internal WADNR agency use only. Errors or omissions may exist.

DNR State Uplands (Surface Trust Code)	Highway	<b>Adjacent Map Tiles</b>	
Natural Area Preserve (74)	Major Road	Sugarloaf Peak	Tye Mountain
Natural Resource Conservation Area (75)	Unimproved Road	Van Creek	Chumstick Mountain
Stream	Non-Drivable Road	Peshastin	Cashmere
Road Gate	Trail	Baldy Mountain	Ardenvoir
<p><b>Trust Code Descriptions</b></p> <ul style="list-style-type: none"> <li>1 State Forest Transfer</li> <li>2 State Forest Purchase</li> <li>3 Common School and Indemnity</li> <li>4 Agricultural School</li> <li>5 University - Transferred</li> <li>6 Charitable/Educ/Penal/Reform</li> <li>7 Capital Grant</li> <li>8 Normal School</li> <li>9 Escheat</li> <li>10 Scientific School</li> <li>11 University - Original</li> <li>12 Community College Forest Resv</li> <li>13 Administrative Site</li> <li>21 Tidelands - 2nd Class</li> <li>43 Land Bank</li> <li>46 C.E.P &amp; R.I. Transferred</li> <li>47 Milwaukee Road Corridor</li> <li>48 Community Forest Trust</li> <li>74 Natural Area Preserve</li> <li>75 Natural Resource Conserv Area</li> <li>77 Water Pollution Control Division</li> </ul>		Rocky Reach Dam	