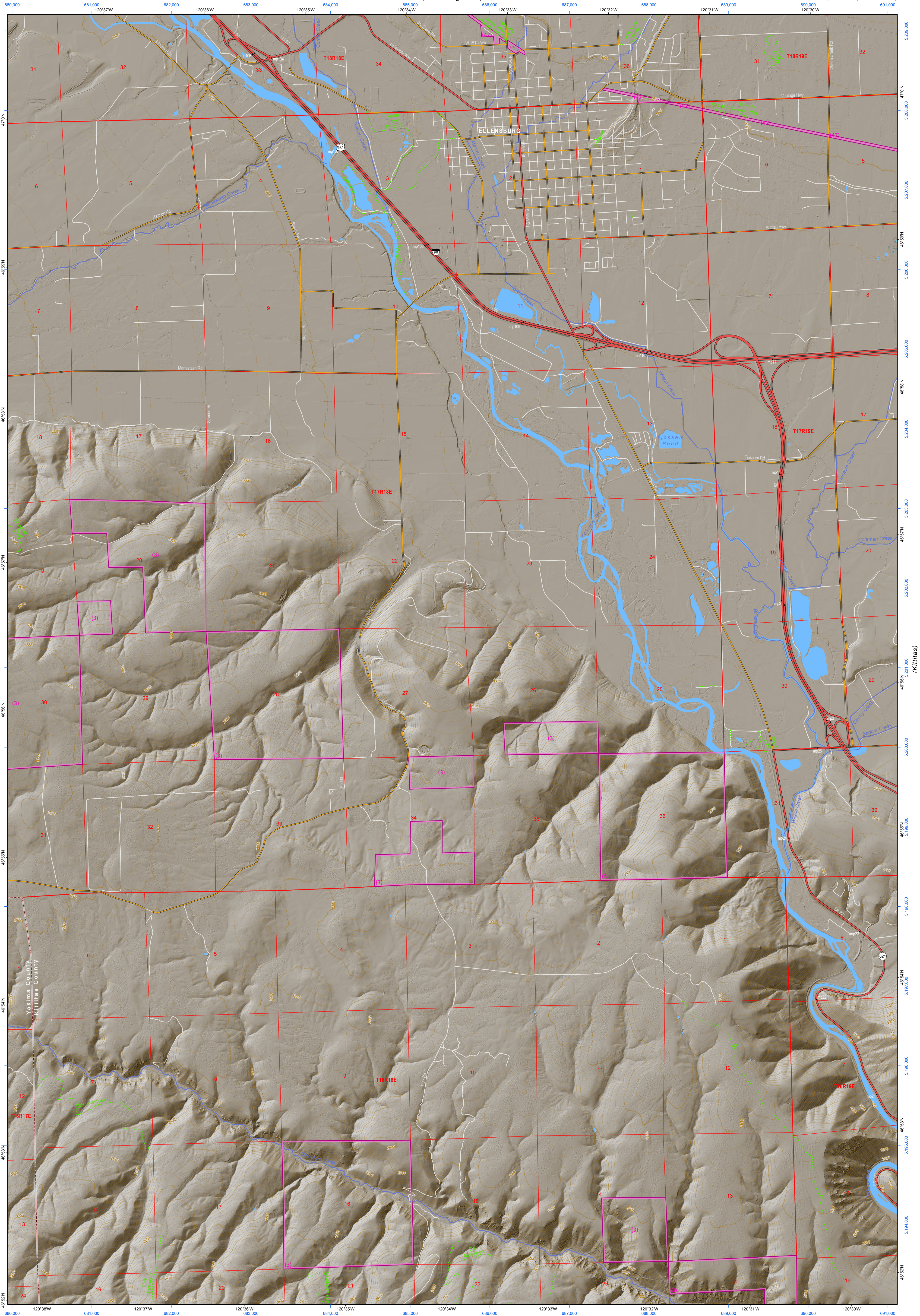
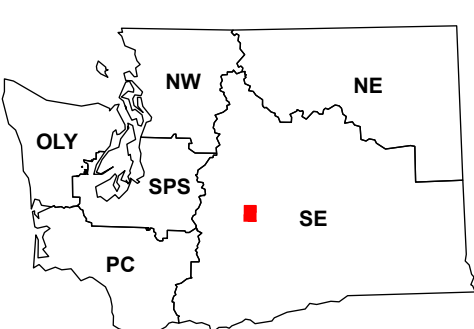


(Ellensburg North)



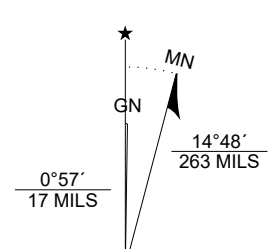
(The Cottonwoods)

**Map Location**



Map Coordinate System:  
NAD 1983 NSRS2007 UTM Zone 10N  
Map Projection System: Transverse Mercator

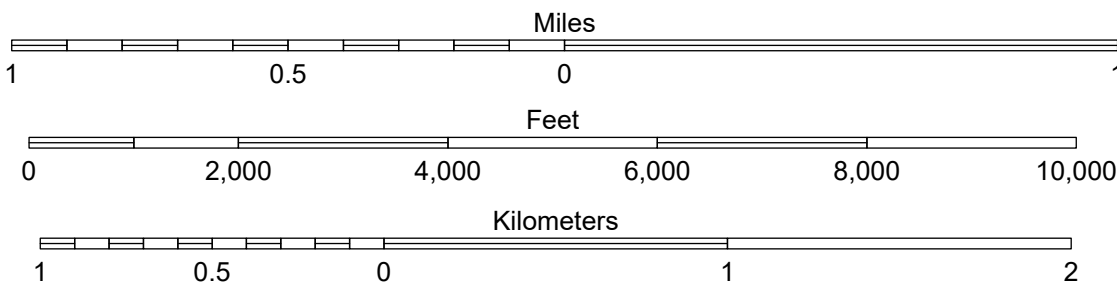
Scan for WADNR map series library



Map Tick Marks:  
Latitude/Longitude WGS84 (in black)  
UTM NSRS2007 (in blue)

**Ellensburg South**

WADNR Hillshade 2025 Map Series (v20250606)



Produced by Washington State Department of Natural Resources (WADNR)  
Forest Resources Division, Forest Informatics Section, tbch490/c sny490  
Intended for internal WADNR agency use only. Errors or omissions may exist.

- DNR State Uplands (Surface Trust Code)
- Natural Area Preserve (74)
- Natural Resource Conservation Area (75)
- Stream
- Road Gate
- Highway
- Major Road
- Unimproved Road
- Non-Drivable Road
- Trail

- Trust Code Descriptions**
- 1 State Forest Transfer
  - 2 State Forest Purchase
  - 3 Common School and Indemnity
  - 4 Agricultural School
  - 5 University - Transferred
  - 6 Charitable/Educ/Penal/Reform
  - 7 Capital Grant
  - 8 Normal School
  - 9 Escheat
  - 10 Scientific School
  - 11 University - Original
  - 12 Community College Forest Resv
  - 13 Administrative Site
  - 21 Tidelands - 2nd Class
  - 43 Land Bank
  - 46 C.E.P.&R.I. Transferred
  - 47 Milwaukee Road Corridor
  - 48 Community Forest Trust
  - 74 Natural Area Preserve
  - 75 Natural Resource Conserv Area
  - 77 Water Pollution Control Division

**Adjacent Map Tiles**

