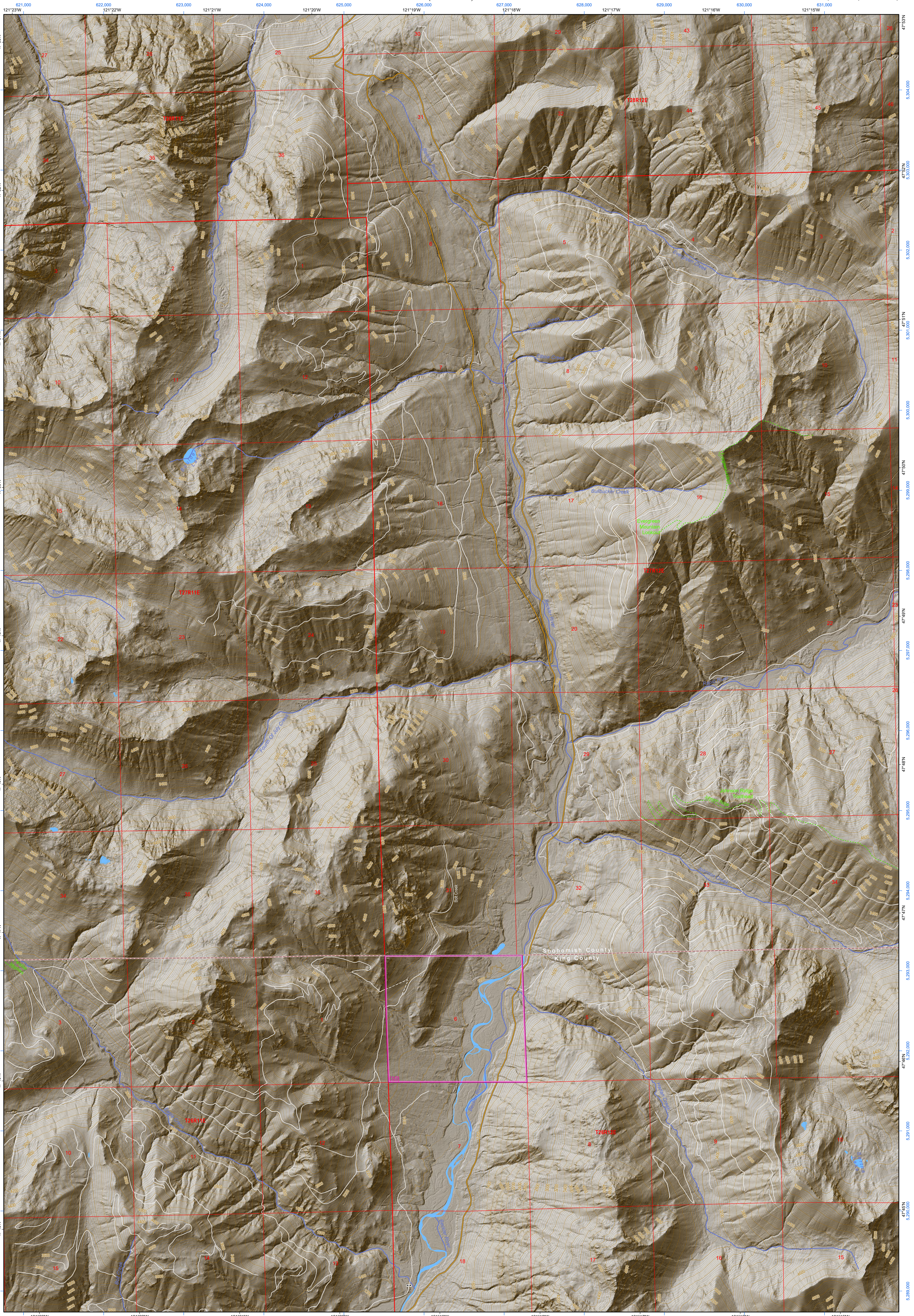


(Blanca Lake)

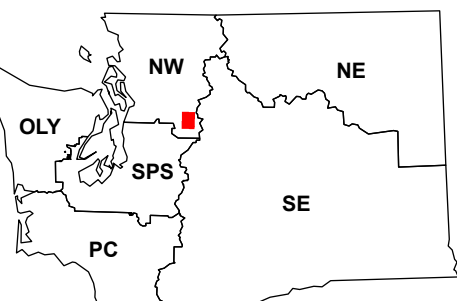


(Skykomish)

**Evergreen Mountain**

WADNR Hillshade 2025 Map Series (v20250606)

**Map Location**

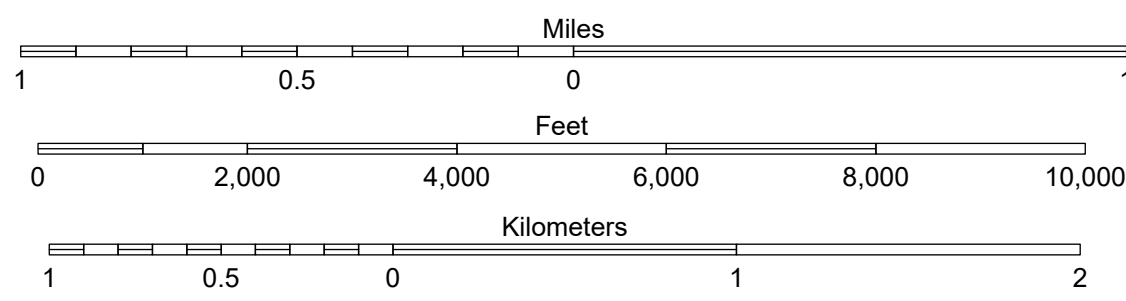
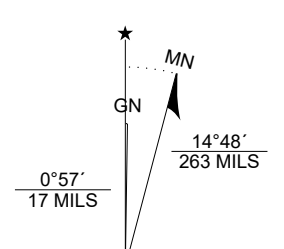


Map Coordinate System:  
NAD 1983 NSRS2007 UTM Zone 10N  
Map Projection System: Transverse Mercator

Scan for WADNR map series library



Map Tick Marks:  
Latitude/Longitude WGS84 (in black)  
UTM NSRS2007 (in blue)



Produced by Washington State Department of Natural Resources (WADNR)  
Forest Resources Division, Forest Informatics Section, fbch490/csn490  
Intended for internal WADNR agency use only. Errors or omissions may exist.

- DNR State Uplands (Surface Trust Code)
- Natural Area Preserve (74)
- Natural Resource Conservation Area (75)
- Stream
- Road Gate
- Highway
- Major Road
- Unimproved Road
- Non-Drivable Road
- Trail

- Trust Code Descriptions**
- |                                |                                     |
|--------------------------------|-------------------------------------|
| 1 State Forest Transfer        | 12 Community College Forest Resv    |
| 2 State Forest Purchase        | 13 Administrative Site              |
| 3 Common School and Indemnity  | 21 Tidelands - 2nd Class            |
| 4 Agricultural School          | 43 Land Bank                        |
| 5 University - Transferred     | 46 C.E.P & R.I. Transferred         |
| 6 Charitable/Educ/Penal/Reform | 47 Milwaukee Road Corridor          |
| 7 Capital Grant                | 48 Community Forest Trust           |
| 8 Normal School                | 74 Natural Area Preserve            |
| 9 Escheat                      | 75 Natural Resource Conserv Area    |
| 10 Scientific School           | 77 Water Pollution Control Division |
| 11 University - Original       |                                     |

**Adjacent Map Tiles**

Monte Cristo	Blanca Lake	Benchmark Mountain
Baring	Evergreen Mountain	Captain Point
Grotto	Skykomish	Scenic