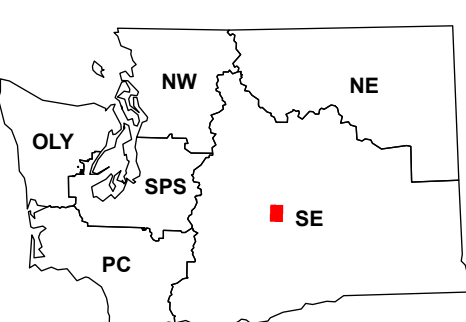
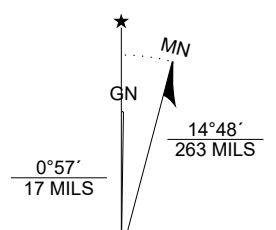




Map Location

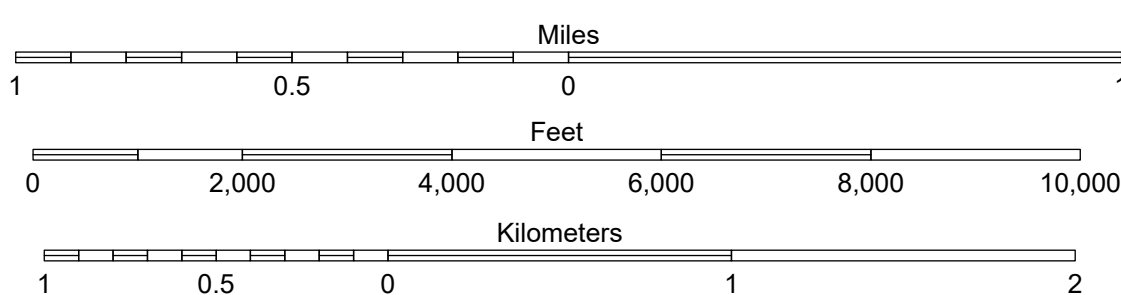


Scan for WADNR map series library



Ginkgo

WADNR Hillshade 2025 Map Series (v20250606)



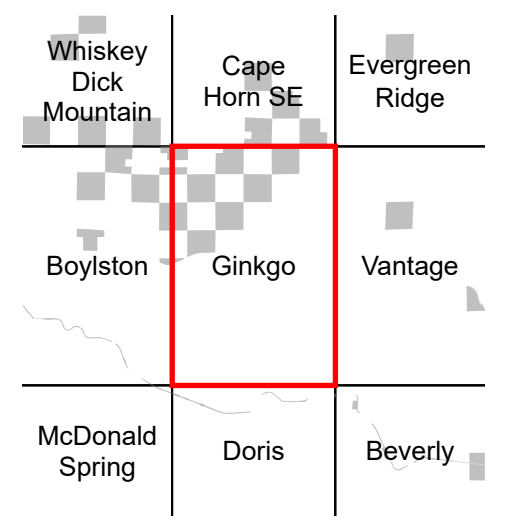
Legend

- DNR State Uplands (Surface Trust Code)
- Natural Area Preserve (74)
- Natural Resource Conservation Area (75)
- Stream
- Road Gate
- Highway
- Major Road
- Unimproved Road
- Non-Drivable Road
- Trail

Trust Code Descriptions

1 State Forest Transfer	12 Community College Forest Resv
2 State Forest Purchase	13 Administrative Site
3 Common School and Indemnity	21 Tidelands - 2nd Class
4 Agricultural School	43 Land Bank
5 University - Transferred	46 C.E.P. & R.I. Transferred
6 Charitable/Educ/Penal/Reform	47 Milwaukee Road Corridor
7 Capital Grant	48 Community Forest Trust
8 Normal School	74 Natural Area Preserve
9 Escheat	75 Natural Resource Conserv Area
10 Scientific School	77 Water Pollution Control Division
11 University - Original	

Adjacent Map Tiles



Map Coordinate System:
 NAD 1983 NSRS2007 UTM Zone 10N
 Map Projection System: Transverse Mercator

Map Tick Marks:
 Latitude/Longitude WGS84 (in black)
 UTM NSRS2007 (in blue)

Produced by Washington State Department of Natural Resources (WADNR)
 Forest Resources Division, Forest Informatics Section, tcb490/c sny490
 Intended for internal WADNR agency use only. Errors or omissions may exist.