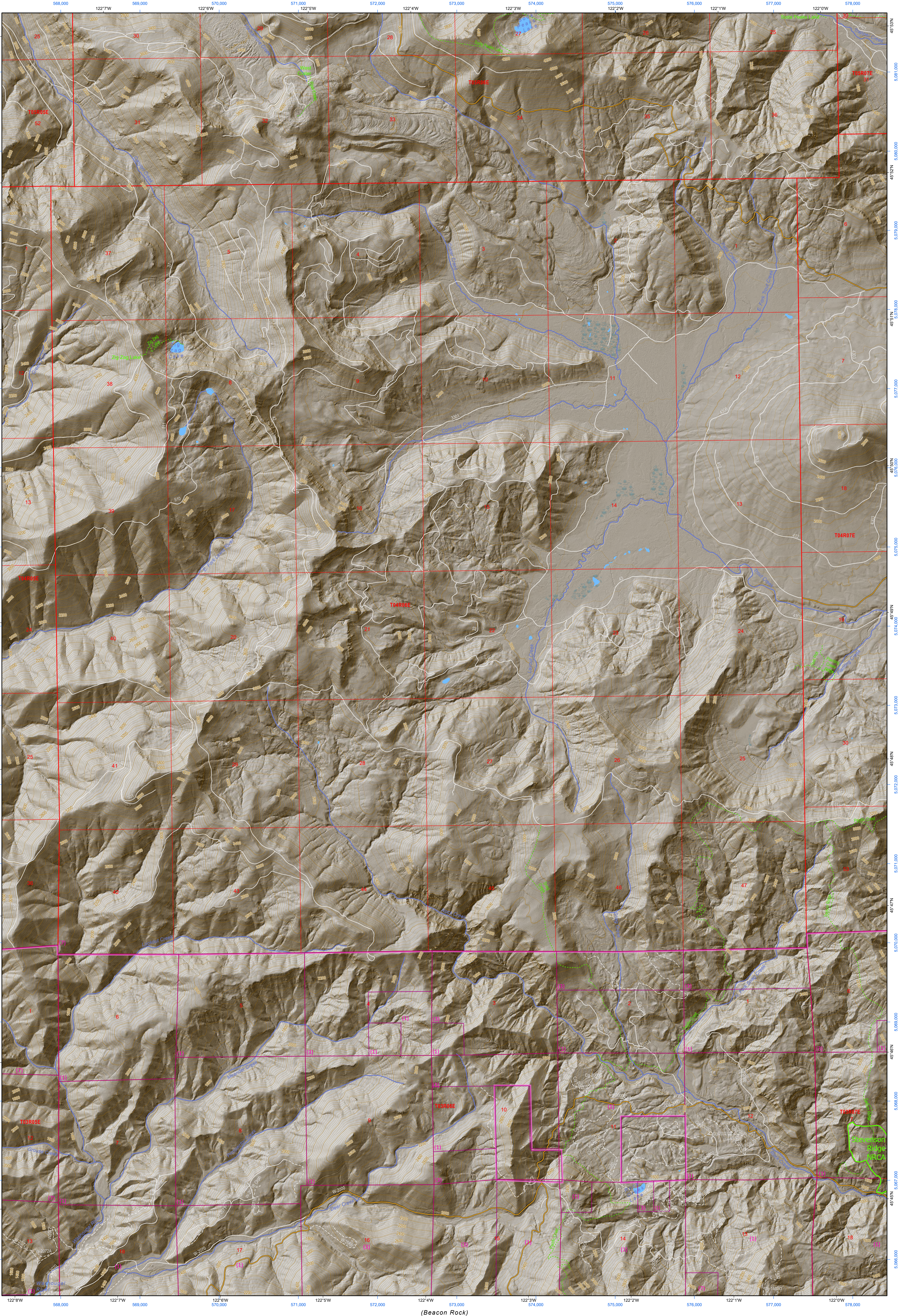


(Bare Mountain)

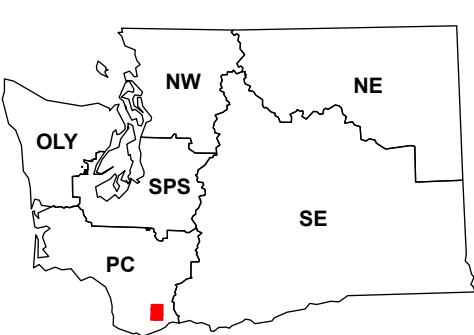


(Cumboot Mountain)

(Stabler)

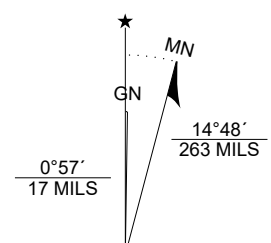
(Beacon Rock)

Map Location



Map Coordinate System:  
NAD 1983 NSRS2007 UTM Zone 10N  
Map Projection System: Transverse Mercator

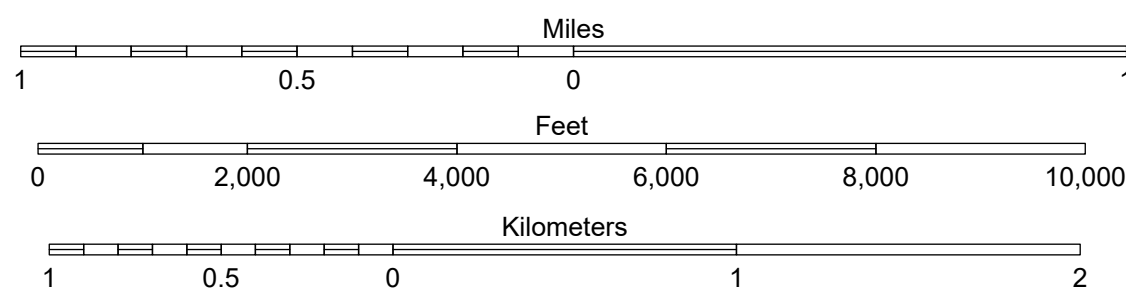
Scan for WADNR map series library



Map Tick Marks:  
Latitude/Longitude WGS84 (in black)  
UTM NSRS2007 (in blue)

Lookout Mountain

WADNR Hillshade 2025 Map Series (v20250606)



Produced by Washington State Department of Natural Resources (WADNR)  
Forest Resources Division, Forest Informatics Section, tbc490/csny490  
Intended for internal WADNR agency use only. Errors or omissions may exist.

- DNR State Uplands (Surface Trust Code)
- Natural Area Preserve (74)
- Natural Resource Conservation Area (75)
- Stream
- Road Gate
- Highway
- Major Road
- Unimproved Road
- Non-Drivable Road
- Trail

- Trust Code Descriptions
- |                                |                                     |
|--------------------------------|-------------------------------------|
| 1 State Forest Transfer        | 12 Community College Forest Resv    |
| 2 State Forest Purchase        | 13 Administrative Site              |
| 3 Common School and Indemnity  | 21 Tidelands - 2nd Class            |
| 4 Agricultural School          | 43 Land Bank                        |
| 5 University - Transferred     | 46 C.E.P. & R.I. Transferred        |
| 6 Charitable/Educ/Penal/Reform | 47 Milwaukee Road Corridor          |
| 7 Capital Grant                | 48 Community Forest Trust           |
| 8 Normal School                | 74 Natural Area Preserve            |
| 9 Escheat                      | 75 Natural Resource Conserv Area    |
| 10 Scientific School           | 77 Water Pollution Control Division |
| 11 University - Original       |                                     |

Adjacent Map Tiles

