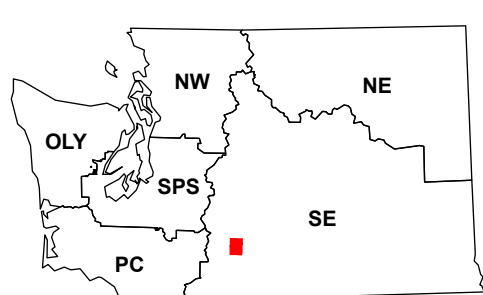
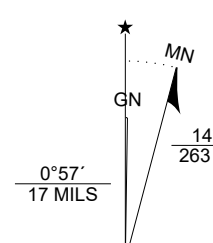




Map Location

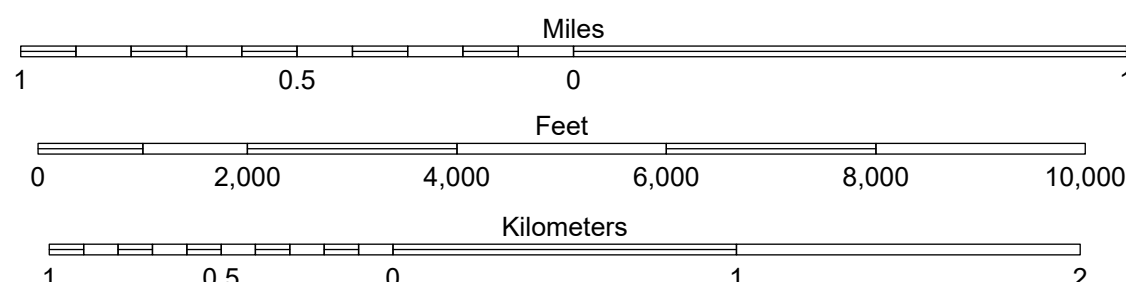


Scan for WADNR map series library



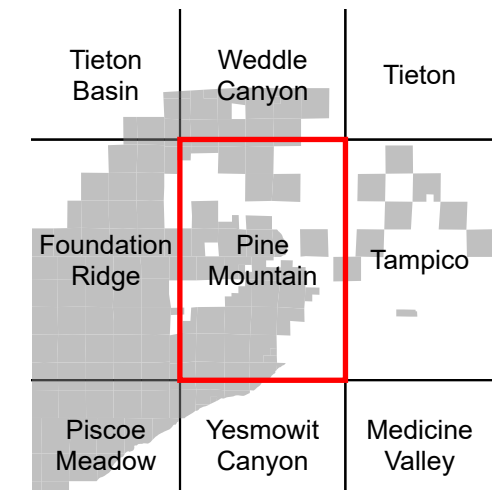
Pine Mountain

WADNR Hillshade 2025 Map Series (v20250606)



- DNR State Uplands (Surface Trust Code)
- Natural Area Preserve (74)
- Stream
- Road Gate
- Highway
- Major Road
- Unimproved Road
- Non-Drivable Road
- Trail

Adjacent Map Tiles



Trust Code Descriptions

- 1 State Forest Transfer
- 2 State Forest Purchase
- 3 Common School and Indemnity
- 4 Agricultural School
- 5 University - Transferred
- 6 Charitable/Educ/Penal/Reform
- 7 Capital Grant
- 8 Normal School
- 9 Escheat
- 10 Scientific School
- 11 University - Original
- 12 Community College Forest Resv
- 13 Administrative Site
- 21 Tidelands - 2nd Class
- 43 Land Bank
- 46 C.E.P.&R.I. Transferred
- 47 Milwaukee Road Corridor
- 48 Community Forest Trust
- 74 Natural Area Preserve
- 75 Natural Resource Conserv Area
- 77 Water Pollution Control Division

Map Coordinate System:
NAD 1983 NSRS2007 UTM Zone 10N
Map Projection System: Transverse Mercator

Map Tick Marks:
Latitude/Longitude WGS84 (in black)
UTM NSRS2007 (in blue)

Produced by Washington State Department of Natural Resources (WADNR)
Forest Resources Division, Forest Informatics Section, tcb490/c sny490
Intended for internal WADNR agency use only. Errors or omissions may exist.