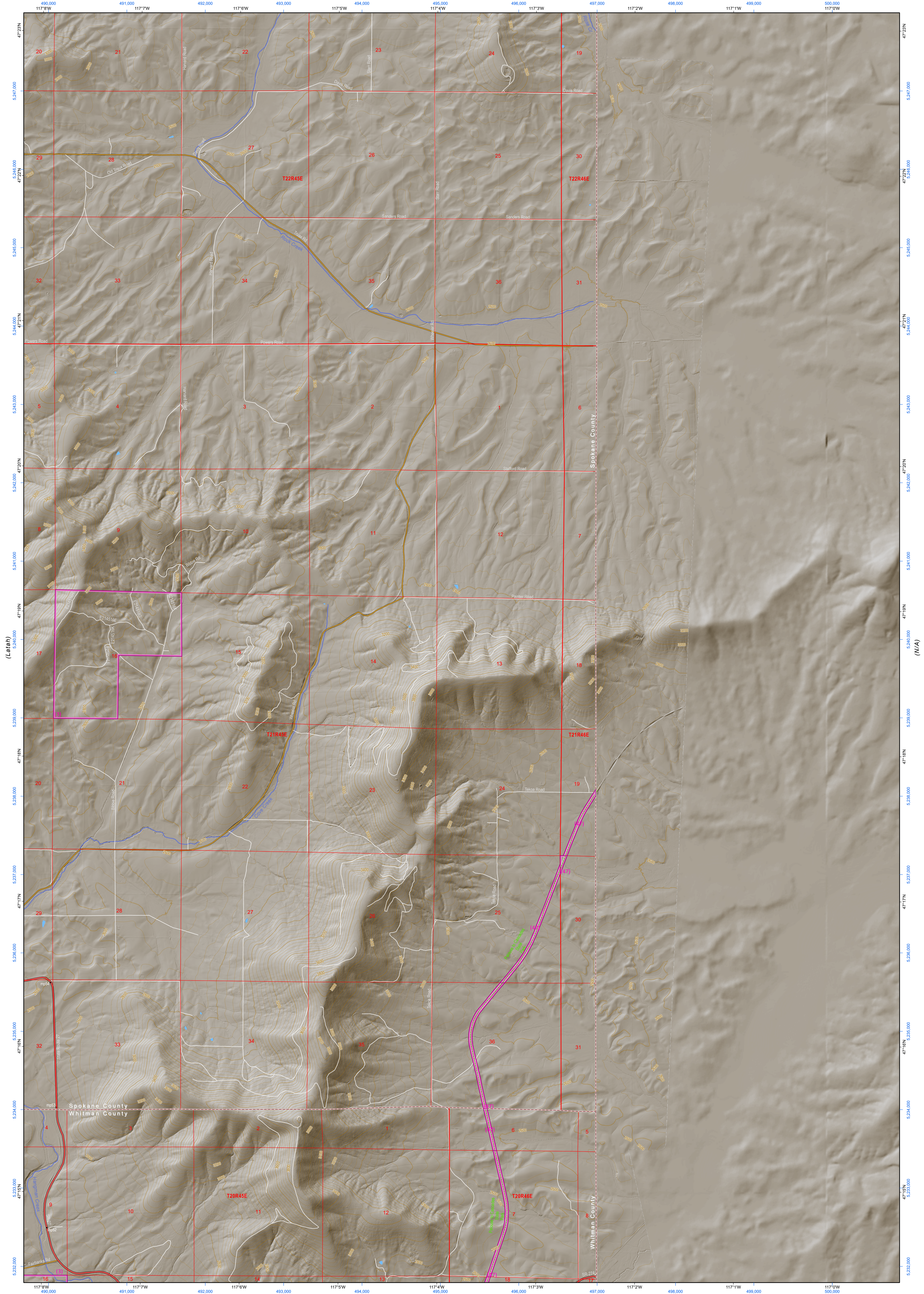


(Setters)



(Latah)

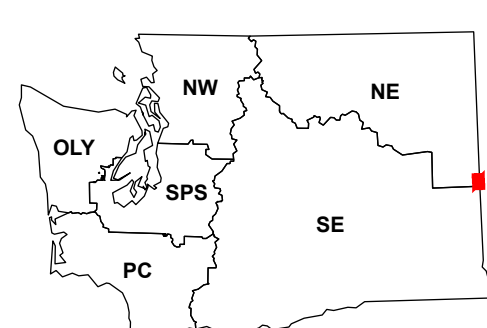
(N/A)

(Tekoa)

Tekoa Mountain

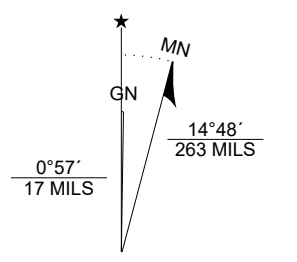
WADNR Hillshade 2025 Map Series (v20250606)

Map Location



Map Coordinate System:
NAD 1983 NSRS2007 UTM Zone 11N
Map Projection System: Transverse Mercator

Scan for WADNR map series library



Map Tick Marks:
Latitude/Longitude WGS84 (in black)
UTM NSRS2007 (in blue)



Produced by Washington State Department of Natural Resources (WADNR)
Forest Resources Division, Forest Informatics Section, tbc490/csyn490
Intended for internal WADNR agency use only. Errors or omissions may exist.

- DNR State Uplands (Surface Trust Code)
- Natural Area Preserve (74)
- Natural Resource Conservation Area (75)
- Stream
- Road Gate
- Highway
- Major Road
- Unimproved Road
- Non-Drivable Road
- Trail

- #### Trust Code Descriptions
- | | |
|--------------------------------|-------------------------------------|
| 1 State Forest Transfer | 12 Community College Forest Resv |
| 2 State Forest Purchase | 13 Administrative Site |
| 3 Common School and Indemnity | 21 Tidelands - 2nd Class |
| 4 Agricultural School | 43 Land Bank |
| 5 University - Transferred | 46 C.E.P & R.I. Transferred |
| 6 Charitable/Educ/Penal/Reform | 47 Milwaukee Road Corridor |
| 7 Capital Grant | 48 Community Forest Trust |
| 8 Normal School | 74 Natural Area Preserve |
| 9 Escheat | 75 Natural Resource Conserv Area |
| 10 Scientific School | 77 Water Pollution Control Division |
| 11 University - Original | |

Adjacent Map Tiles

