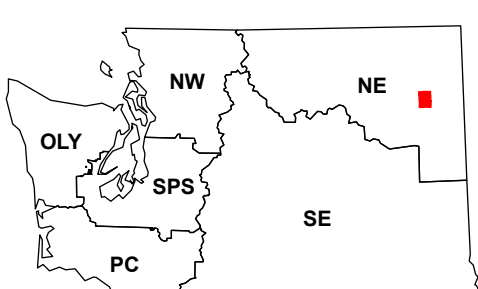
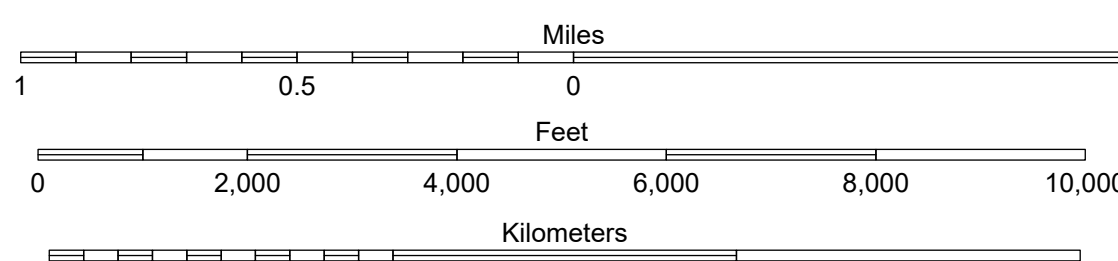
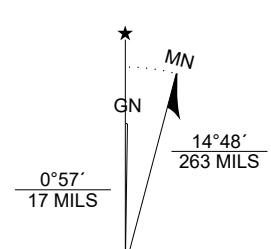


Map Location



Scan for WADNR map series library



Valley

WADNR Hillshade 2025 Map Series (v20250606)

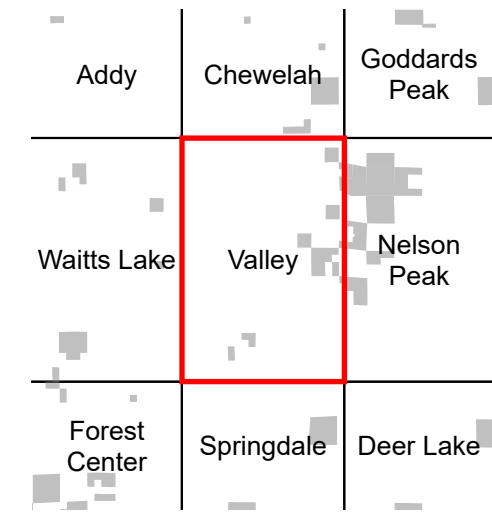
Produced by Washington State Department of Natural Resources (WADNR)
 Forest Resources Division, Forest Informatics Section, tbc490/csn490
 Intended for internal WADNR agency use only. Errors or omissions may exist.

- DNR State Uplands (Surface Trust Code)
- Natural Area Preserve (74)
- Natural Resource Conservation Area (75)
- Stream
- Road Gate
- Highway
- Major Road
- Unimproved Road
- Non-Drivable Road
- Trail

Trust Code Descriptions

- 1 State Forest Transfer
- 2 State Forest Purchase
- 3 Common School and Indemnity
- 4 Agricultural School
- 5 University - Transferred
- 6 Charitable/Educ/Penal/Reform
- 7 Capital Grant
- 8 Normal School
- 9 Escheat
- 10 Scientific School
- 11 University - Original
- 12 Community College Forest Resv
- 13 Administrative Site
- 21 Tidelands - 2nd Class
- 43 Land Bank
- 46 C.E.P & R.I. Transferred
- 47 Milwaukee Road Corridor
- 48 Community Forest Trust
- 74 Natural Area Preserve
- 75 Natural Resource Conserv Area
- 77 Water Pollution Control Division

Adjacent Map Tiles



Map Coordinate System:
 NAD 1983 NSRS2007 UTM Zone 11N
 Map Projection System: Transverse Mercator

Map Tick Marks:
 Latitude/Longitude WGS84 (in black)
 UTM NSRS2007 (in blue)