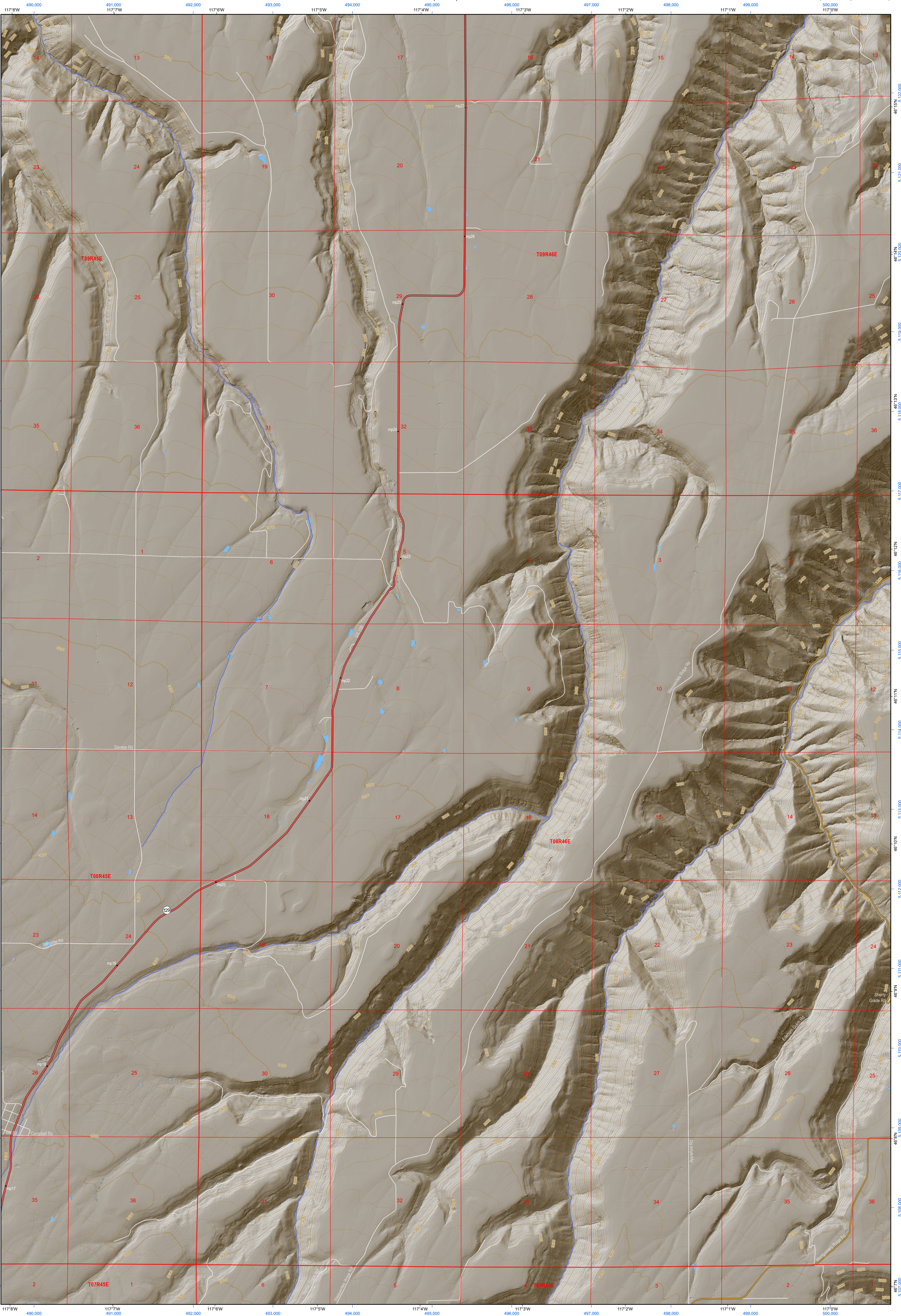


(Asotin)



(Black Butte)

(Anatone)

(Captain John Rapids)

Map Location

Map Coordinate System:
NAD 1983 NSRS2007 UTM Zone 11N
Map Projection System: Transverse Mercator



Map Tick Marks:
Latitude/Longitude WGS84 (in black)
UTM NSRS2007 (in blue)

Weissenfels Ridge
WADNR Hillshade 2025 Map Series (v20250606)

Produced by Washington State Department of Natural Resources (WADNR)
Forest Resources Division, Forest Informatics Section, tbc490/csny490
Intended for internal WADNR agency use only. Errors or omissions may exist.

Legend

- DNR State Uplands (Surface Trust Code)
- Natural Area Preserve (74)
- Natural Resource Conservation Area (75)
- Stream
- Road Gate
- Highway
- Major Road
- Unimproved Road
- Non-Drivable Road
- Trail

Trust Code Descriptions

1 State Forest Transfer	12 Community College Forest Resv
2 State Forest Purchase	13 Administrative Site
3 Common School and Indemnity	21 Tidelands - 2nd Class
4 Agricultural School	43 Land Bank
5 University - Transferred	46 C.E.P.&R.I. Transferred
6 Charitable/Educ/Penal/Reform	47 Milwaukee Road Corridor
7 Capital Grant	48 Community Forest Trust
8 Normal School	74 Natural Area Preserve
9 Escheat	75 Natural Resource Conserv Area
10 Scientific School	77 Water Pollution Control Division
11 University - Original	

Adjacent Map Tiles

Rockpile Creek	Asotin	Lewiston Orchards South
Anatone	Weissenfels Ridge	Captain John Rapids
Fields Spring	Black Butte	Limekiln Rapids