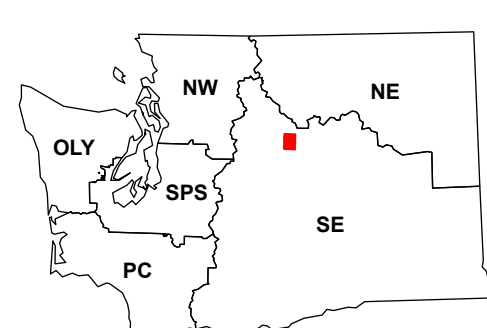
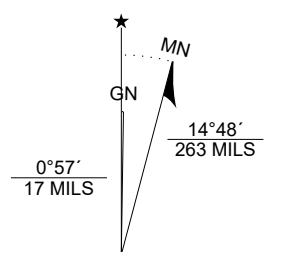




Map Location

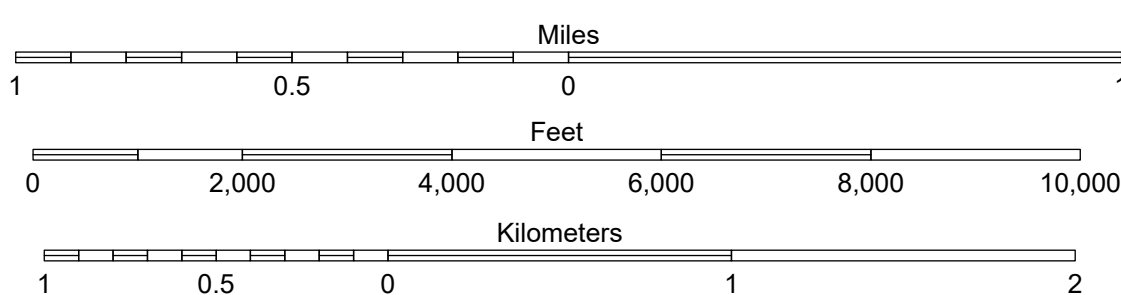


Scan for WADNR map series library



Winesap

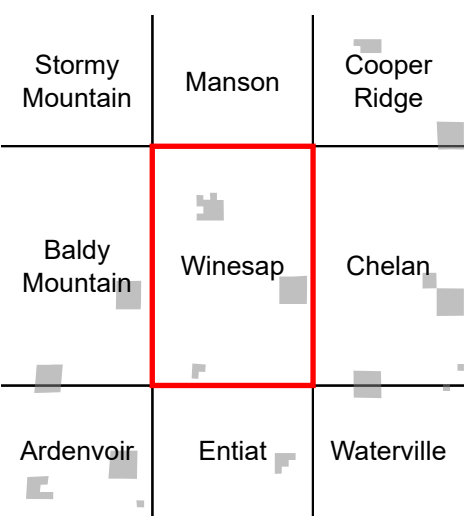
WADNR Hillshade 2025 Map Series (v20250606)



- DNR State Uplands (Surface Trust Code)
- Natural Area Preserve (74)
- Natural Resource Conservation Area (75)
- Stream
- Road Gate
- Highway
- Major Road
- Unimproved Road
- Non-Drivable Road
- Trail

- Trust Code Descriptions**
- 1 State Forest Transfer
 - 2 State Forest Purchase
 - 3 Common School and Indemnity
 - 4 Agricultural School
 - 5 University - Transferred
 - 6 Charitable/Educ/Penal/Reform
 - 7 Capital Grant
 - 8 Normal School
 - 9 Escheat
 - 10 Scientific School
 - 11 University - Original
 - 12 Community College Forest Resv
 - 13 Administrative Site
 - 21 Tidelands - 2nd Class
 - 43 Land Bank
 - 46 C.E.P.&R.I. Transferred
 - 47 Milwaukee Road Corridor
 - 48 Community Forest Trust
 - 74 Natural Area Preserve
 - 75 Natural Resource Conserv Area
 - 77 Water Pollution Control Division

Adjacent Map Tiles



Map Coordinate System:
NAD 1983 NSRS2007 UTM Zone 10N
Map Projection System: Transverse Mercator

Map Tick Marks:
Latitude/Longitude WGS84 (in black)
UTM NSRS2007 (in blue)

Produced by Washington State Department of Natural Resources (WADNR)
Forest Resources Division, Forest Informatics Section, tbc490/csyn490
Intended for internal WADNR agency use only. Errors or omissions may exist.