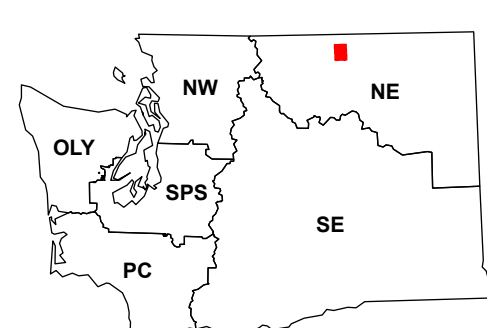


(Ellisforde)

(Havilah)

(Barker Mountain)

Map Location



Scan for WADNR map series library



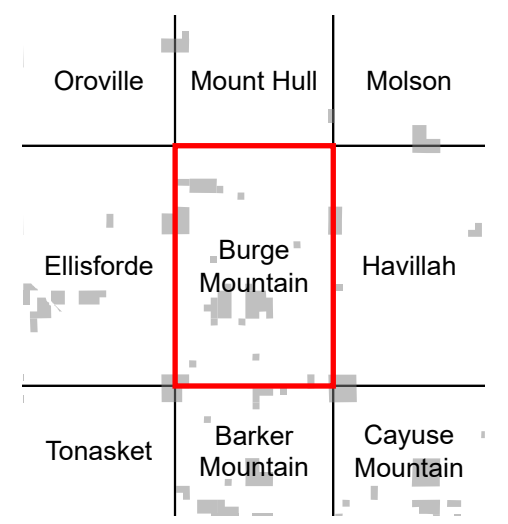
Burge Mountain

WADNR Orthophoto 2025 Map Series (v20250606)

- DNR State Uplands (Surface Trust Code)
- Natural Area Preserve (74)
- Natural Resource Conservation Area (75)
- Stream
- Road Gate
- Highway
- Major Road
- Unimproved Road
- Non-Drivable Road
- Trail

- Trust Code Descriptions**
- |                                |                                     |
|--------------------------------|-------------------------------------|
| 1 State Forest Transfer        | 12 Community College Forest Resv    |
| 2 State Forest Purchase        | 13 Administrative Site              |
| 3 Common School and Indemnity  | 21 Tidelands - 2nd Class            |
| 4 Agricultural School          | 43 Land Bank                        |
| 5 University - Transferred     | 46 C.E.P. & R.I. Transferred        |
| 6 Charitable/Educ/Penal/Reform | 47 Milwaukee Road Corridor          |
| 7 Capital Grant                | 48 Community Forest Trust           |
| 8 Normal School                | 74 Natural Area Preserve            |
| 9 Escheat                      | 75 Natural Resource Conserv Area    |
| 10 Scientific School           | 77 Water Pollution Control Division |
| 11 University - Original       |                                     |

Adjacent Map Tiles



Map Coordinate System:  
 NAD 1983 NSRS2007 UTM Zone 11N  
 Map Projection System: Transverse Mercator

Map Tick Marks:  
 Latitude/Longitude WGS84 (in black)  
 UTM NSRS2007 (in blue)

Produced by Washington State Department of Natural Resources (WADNR)  
 Forest Resources Division, Forest Informatics Section, tbc490/csny490  
 Intended for internal WADNR agency use only. Errors or omissions may exist.