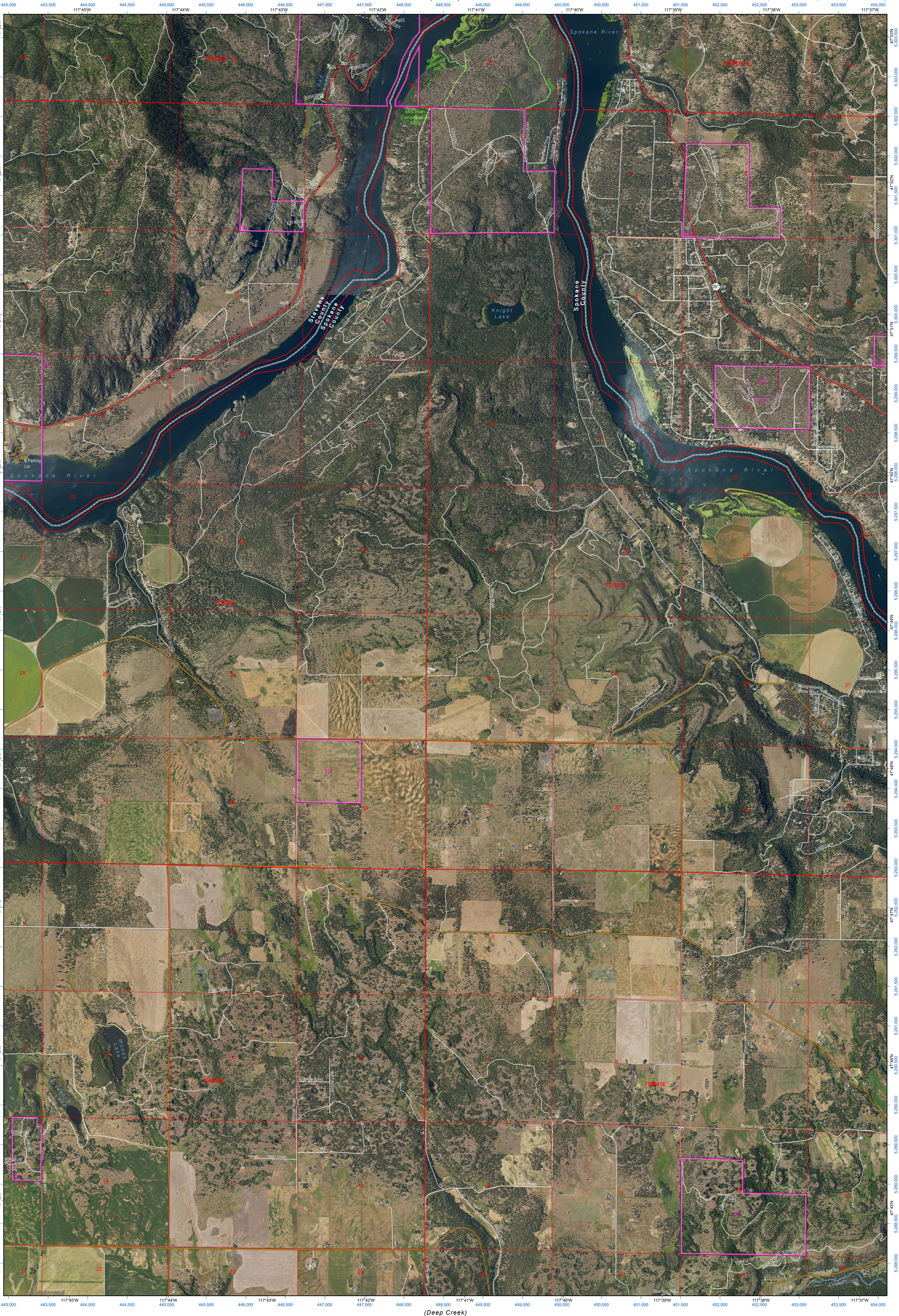


(Tumtum)



(Long Lake)

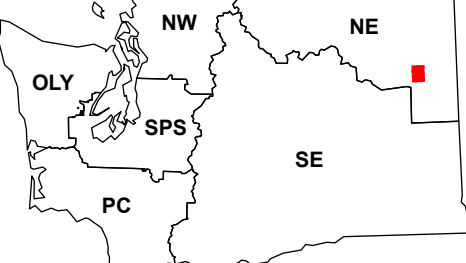
(Nine Mile Falls)

(Deep Creek)

### Four Mound Prairie

WADNR Orthophoto 2025 Map Series (v20250606)

#### Map Location

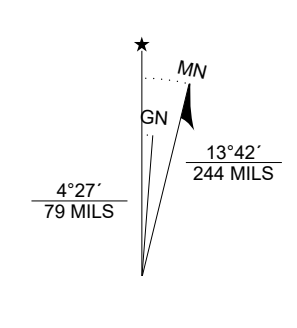


Map Coordinate System:  
NAD 1983 NSRS2007 UTM Zone 11N  
Map Projection System: Transverse Mercator

Scan for WADNR map series library



Map Tick Marks:  
Latitude/Longitude WGS84 (in black)  
UTM NSRS2007 (in blue)



Produced by Washington State Department of Natural Resources (WADNR)  
Forest Resources Division, Forest Informatics Section, tbc490/csyn490  
Intended for internal WADNR agency use only. Errors or omissions may exist.

- DNR State Uplands (Surface Trust Code)
- Natural Area Preserve (74)
- Stream
- Highway
- Major Road
- Unimproved Road
- Non-Drivable Road
- Trail
- Road Gate

- #### Trust Code Descriptions
- |                                |                                     |
|--------------------------------|-------------------------------------|
| 1 State Forest Transfer        | 12 Community College Forest Resv    |
| 2 State Forest Purchase        | 13 Administrative Site              |
| 3 Common School and Indemnity  | 21 Tidelands - 2nd Class            |
| 4 Agricultural School          | 43 Land Bank                        |
| 5 University - Transferred     | 46 C.E.P & R.I. Transferred         |
| 6 Charitable/Educ/Penal/Reform | 47 Milwaukee Road Corridor          |
| 7 Capitol Grant                | 48 Community Forest Trust           |
| 8 Normal School                | 74 Natural Area Preserve            |
| 9 Escheat                      | 75 Natural Resource Conserv Area    |
| 10 Scientific School           | 77 Water Pollution Control Division |
| 11 University - Original       |                                     |

#### Adjacent Map Tiles

