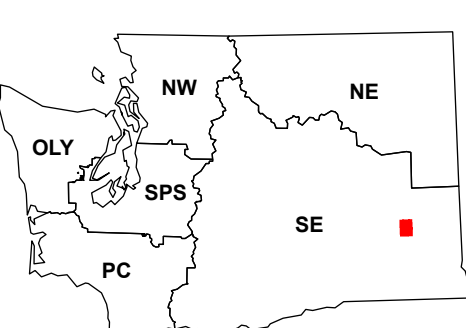


(Rattlesnake Canyon)

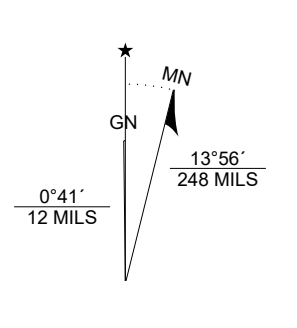
(La Crosse East)

(Hay)

Map Location



Scan for WADNR map series library



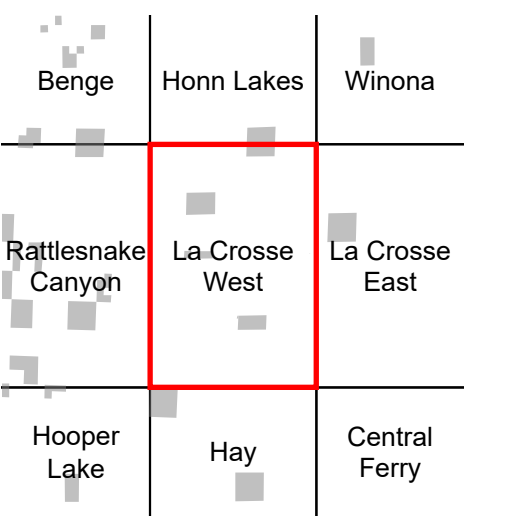
La Crosse West

WADNR Topographic 2025 Map Series (v20250606)



<ul style="list-style-type: none"> <li> DNR State Uplands (Surface Trust Code)</li> <li> Natural Area Preserve (74)</li> <li> Natural Resource Conservation Area (75)</li> <li> Stream</li> <li> Road Gate</li> </ul>	<ul style="list-style-type: none"> <li> Highway</li> <li> Major Road</li> <li> Unimproved Road</li> <li> Non-Drivable Road</li> <li> Trail</li> </ul>	<p>Vegetation Height ft. (2023)</p> <ul style="list-style-type: none"> <li> 0 - 10</li> <li> 10 - 50</li> <li> 50 - 100</li> <li> 100 - 150</li> </ul>
---	---	--

Adjacent Map Tiles



**Trust Code Descriptions**

1 State Forest Transfer	12 Community College Forest Resv
2 State Forest Purchase	13 Administrative Site
3 Common School and Indemnity	21 Tidelands - 2nd Class
4 Agricultural School	43 Land Bank
5 University - Transferred	46 C.E.P.&R.I. Transferred
6 Charitable/Educ/Penal/Reform	47 Milwaukee Road Corridor
7 Capital Grant	48 Community Forest Trust
8 Normal School	74 Natural Area Preserve
9 Escheat	75 Natural Resource Conserv Area
10 Scientific School	77 Water Pollution Control Division
11 University - Original	

Map Coordinate System:  
 NAD 1983 NSRS2007 UTM Zone 11N  
 Map Projection System: Transverse Mercator

Map Tick Marks:  
 Latitude/Longitude WGS84 (in black)  
 UTM NSRS2007 (in blue)

Produced by Washington State Department of Natural Resources (WADNR)  
 Forest Resources Division, Forest Informatics Section, tbc490/csy490  
 Intended for internal WADNR agency use only. Errors or omissions may exist.