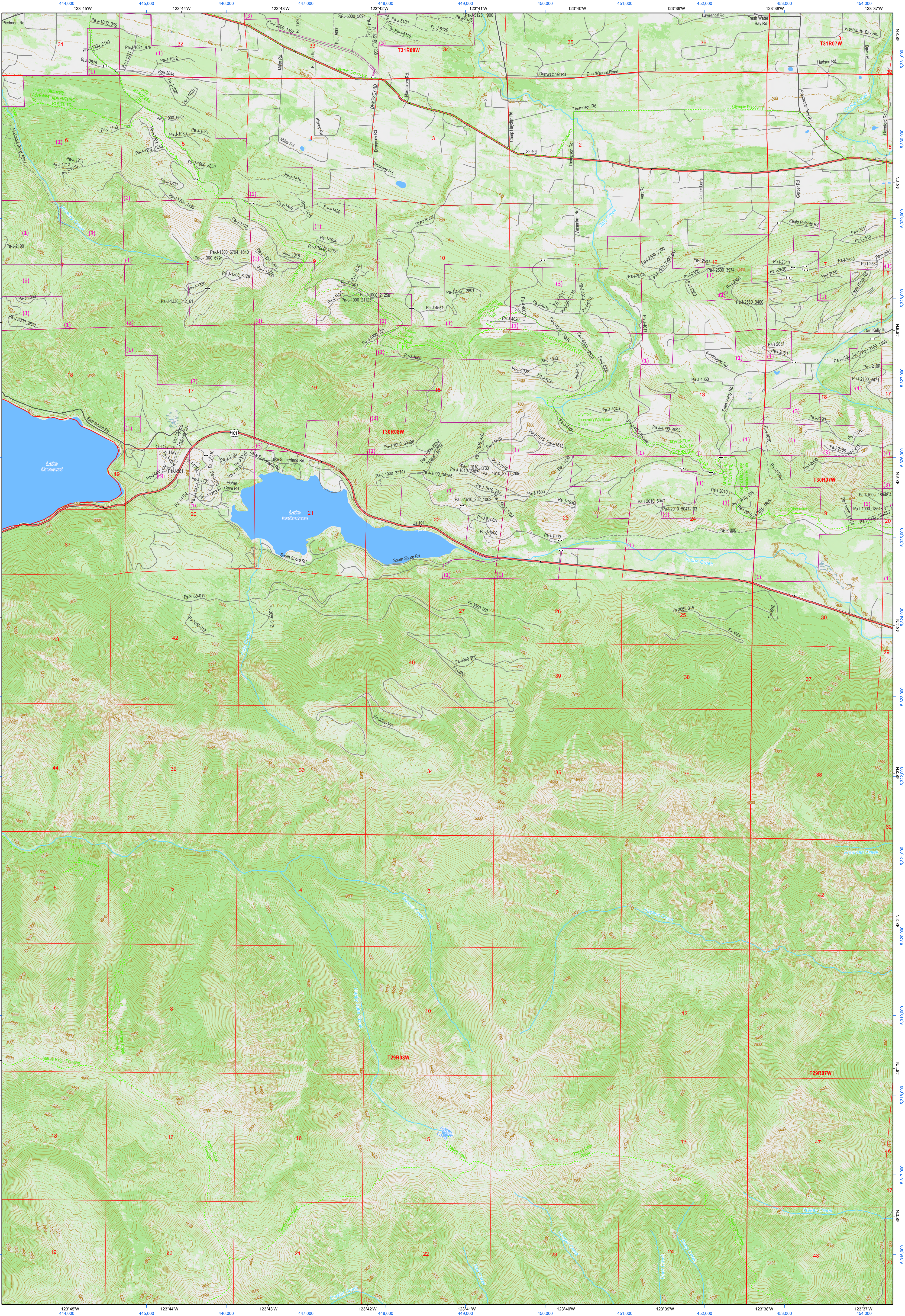


(Joyce)



(Lake Crescent)

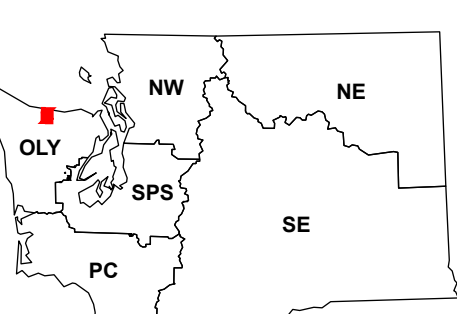
(Elwha)

(Mount Carie)

Lake Sutherland

WADNR Topographic 2025 Map Series (v20250606)

Map Location

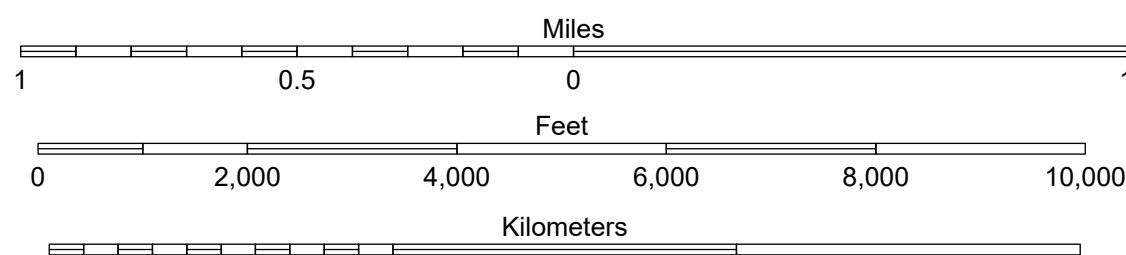
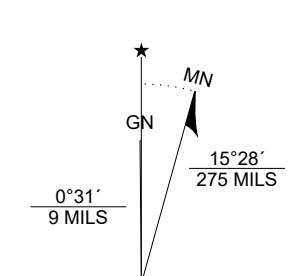


Map Coordinate System:
NAD 1983 NSRS2007 UTM Zone 10N
Map Projection System: Transverse Mercator

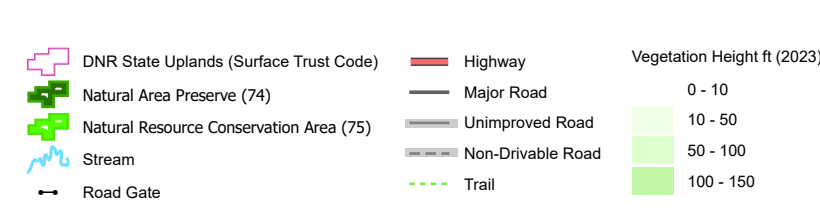
Scan for WADNR map series library



Map Tick Marks:
Latitude/Longitude WGS84 (in black)
UTM NSRS2007 (in blue)



Produced by Washington State Department of Natural Resources (WADNR)
Forest Resources Division, Forest Informatics Section, tcb490/csn490
Intended for internal WADNR agency use only. Errors or omissions may exist.



Trust Code	Descriptions
1	State Forest Transfer
2	State Forest Purchase
3	Common School and Indemnity
4	Agricultural School
5	University - Transferred
6	Charitable/Educ/Penal/Reform
7	Capital Grant
8	Normal School
9	Escheat
10	Scientific School
11	University - Original
12	Community College Forest Resv
13	Administrative Site
21	Tidelands - 2nd Class
43	Land Bank
46	C.E.P & R.I. Transferred
47	Milwaukee Road Corridor
48	Community Forest Trust
74	Natural Area Preserve
75	Natural Resource Conserv Area
77	Water Pollution Control Division

Adjacent Map Tiles

