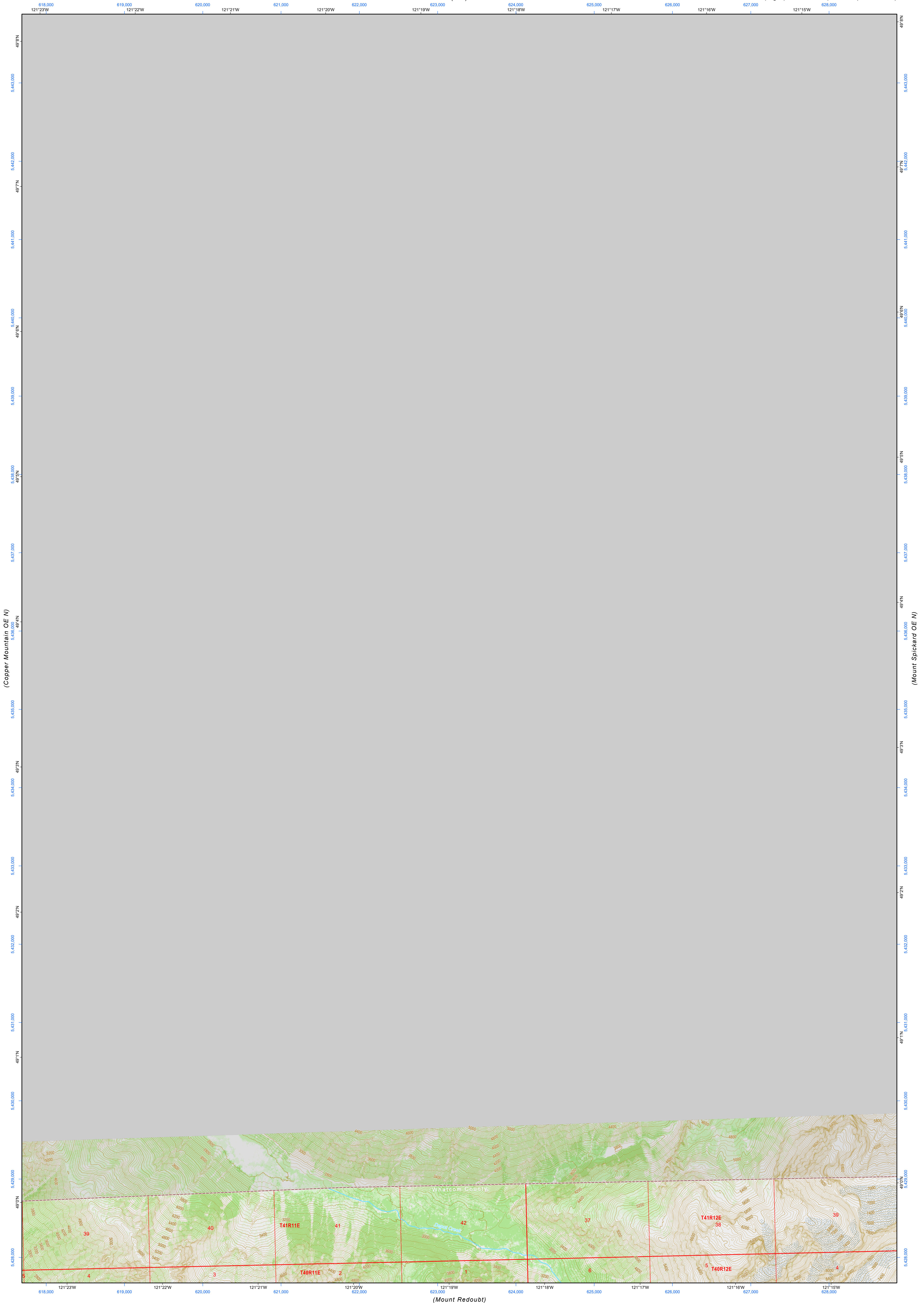


(N/A)



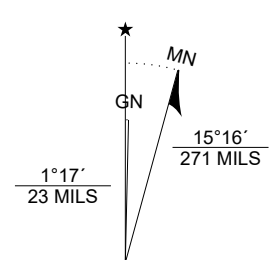
(Copper Mountain OE N)

(Mount Spickard OE N)

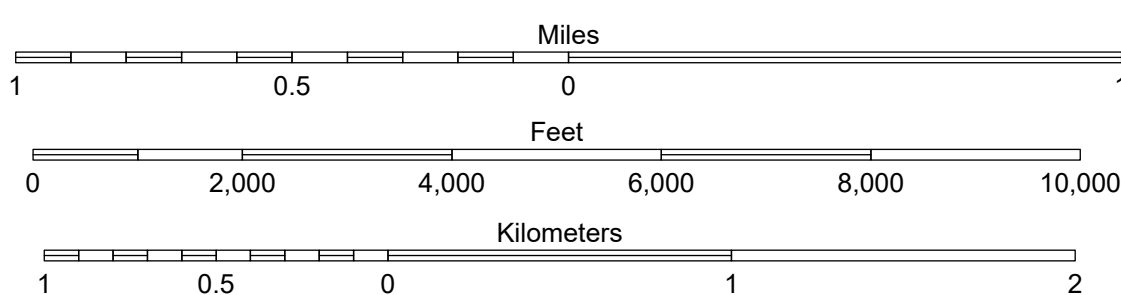
(Mount Redoubt)

**Map Location**

Map Coordinate System:  
NAD 1983 NSRS2007 UTM Zone 10N  
Map Projection System: Transverse Mercator



Map Tick Marks:  
Latitude/Longitude WGS84 (in black)  
UTM NSRS2007 (in blue)



Produced by Washington State Department of Natural Resources (WADNR)  
Forest Resources Division, Forest Informatics Section, tbc490/c sny490  
**Intended for internal WADNR agency use only. Errors or omissions may exist.**

**Mount Redoubt OE N**  
WADNR Topographic 2025 Map Series (v20250606)

**Trust Code Descriptions**

1 State Forest Transfer	12 Community College Forest Resv
2 State Forest Purchase	13 Administrative Site
3 Common School and Indemnity	21 Tidelands - 2nd Class
4 Agricultural School	43 Land Bank
5 University - Transferred	46 C.E.P. & R.I. Transferred
6 Charitable/Educ/Penal/Reform	47 Milwaukee Road Corridor
7 Capitol Grant	48 Community Forest Trust
8 Normal School	74 Natural Area Preserve
9 Escheat	75 Natural Resource Conserv Area
10 Scientific School	77 Water Pollution Control Division
11 University - Original	

**Vegetation Height ft. (2023)**

0 - 10
10 - 50
50 - 100
100 - 150

**Legend:**

- DNR State Uplands (Surface Trust Code)
- Natural Area Preserve (74)
- Natural Resource Conservation Area (75)
- Stream
- Road Gate
- Highway
- Major Road
- Unimproved Road
- Non-Drivable Road
- Trail

**Adjacent Map Tiles**

Copper Mountain OE N	<b>Mount Redoubt OE N</b>	Mount Spickard OE N
Copper Mountain	Mount Redoubt	Mount Spickard