

(La Fleur Lake)

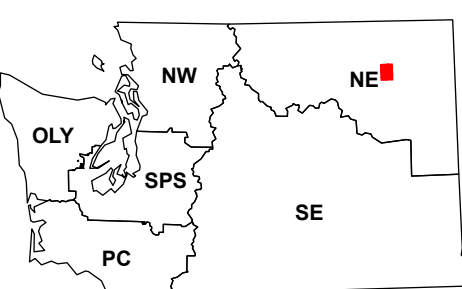
(Kentry Ridge)

Stevens County  
Ferry County

### Rice

WADNR Topographic 2025 Map Series (v20250606)

#### Map Location

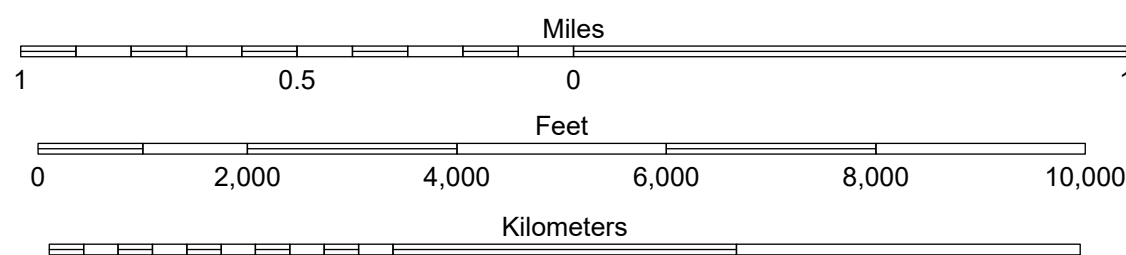
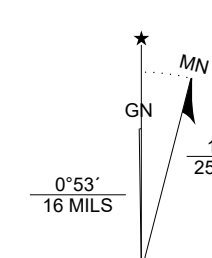


Map Coordinate System:  
NAD 1983 NSRS2007 UTM Zone 11N  
Map Projection System: Transverse Mercator

Scan for WADNR map series library



Map Tick Marks:  
Latitude/Longitude WGS84 (in black)  
UTM NSRS2007 (in blue)



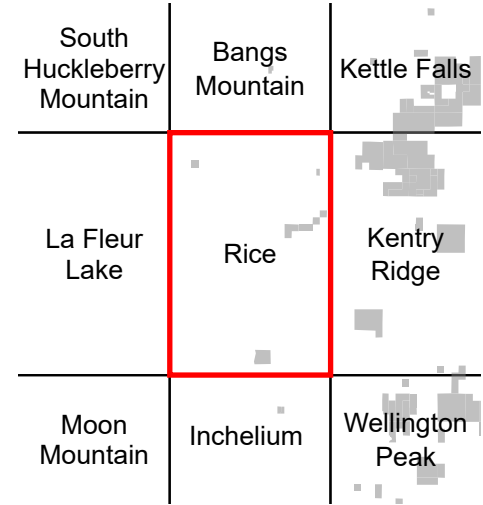
Produced by Washington State Department of Natural Resources (WADNR)  
Forest Resources Division, Forest Informatics Section, tbc490/csn490  
Intended for internal WADNR agency use only. Errors or omissions may exist.

- DNR State Uplands (Surface Trust Code)
- Natural Area Preserve (74)
- Natural Resource Conservation Area (75)
- Stream
- Road Gate
- Highway
- Major Road
- Unimproved Road
- Non-Drivable Road
- Trail

#### Trust Code Descriptions

- 1 State Forest Transfer
- 2 State Forest Purchase
- 3 Common School and Indemnity
- 4 Agricultural School
- 5 University - Transferred
- 6 Charitable/Educ/Penal/Reform
- 7 Capital Grant
- 8 Normal School
- 9 Escheat
- 10 Scientific School
- 11 University - Original
- 12 Community College Forest Resv
- 13 Administrative Site
- 21 Tidelands - 2nd Class
- 43 Land Bank
- 46 C.E.P. & R.I. Transferred
- 47 Milwaukee Road Corridor
- 48 Community Forest Trust
- 74 Natural Area Preserve
- 75 Natural Resource Conserv Area
- 77 Water Pollution Control Division

#### Adjacent Map Tiles



Vegetation Height ft. (2023)

- 0 - 10
- 10 - 50
- 50 - 100
- 100 - 150