

# WHATCOM UNIFIED SITUATION REPORT



REPORT #: 20200419.1	DATE: 4/19/2020	TIME: 13:00
INCIDENT NAME: COVID-2019	OPERATIONAL PERIOD: 7	MISSION NUMBER: 20-0265

## WHATCOM UNIFIED INCIDENT COMMAND STATUS

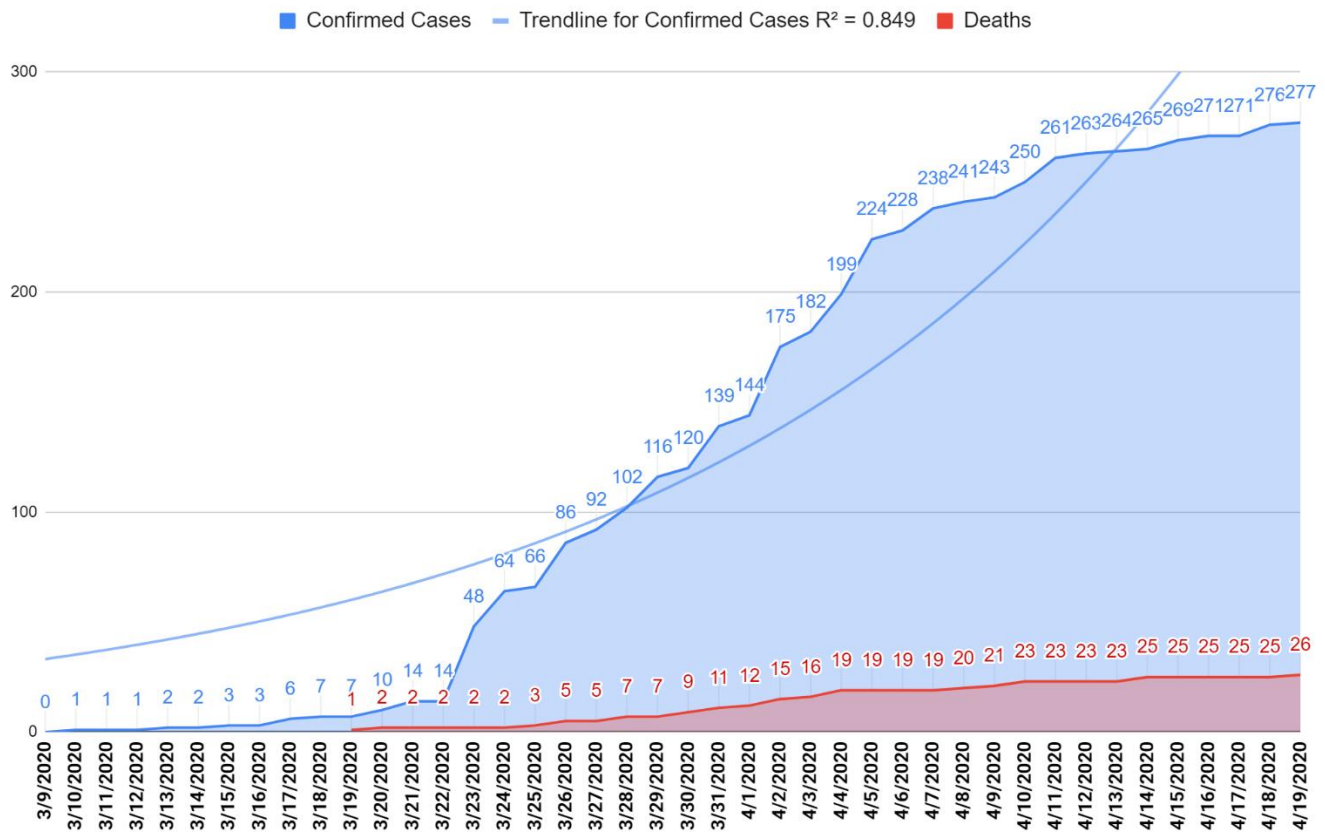
ACTIVATION: Whatcom Unified Emergency Command Center	ACTIVATION STATUS: Partial	HOURS OF OPERATION: 7am – 7pm
---	-------------------------------	----------------------------------

## GENERAL SITUATION

ICS 202

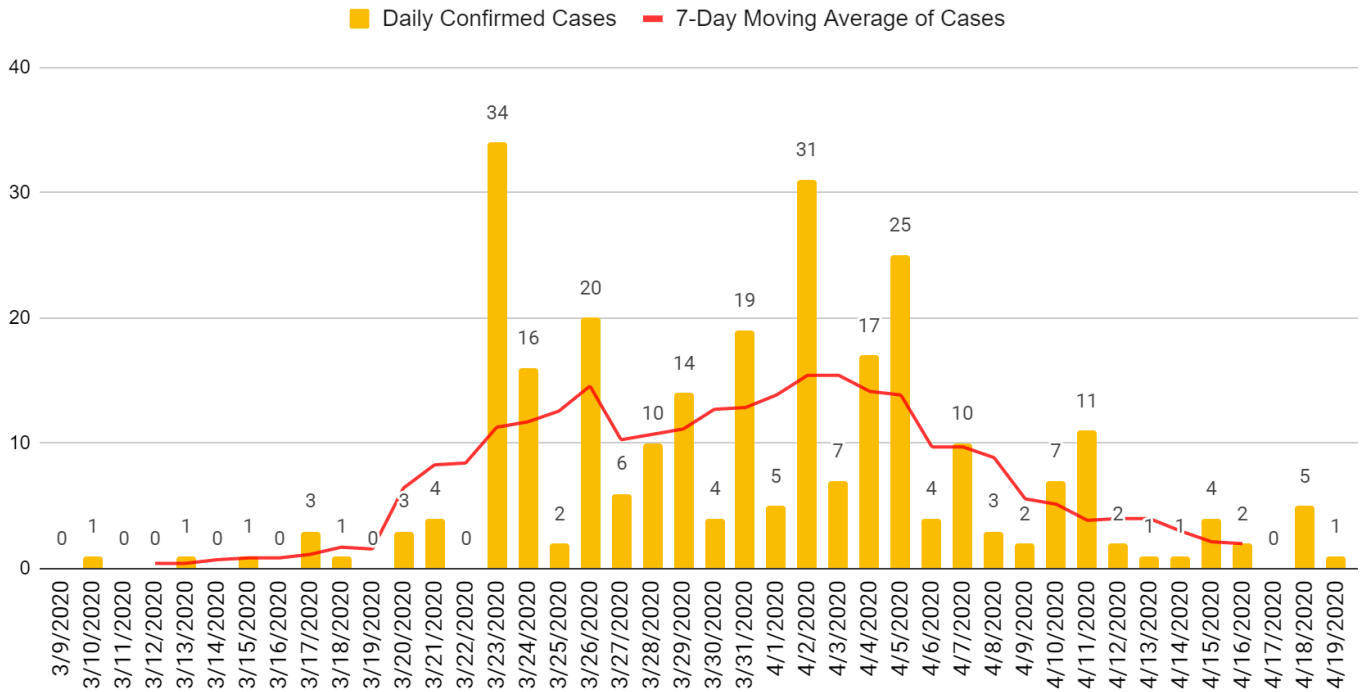
### WHATCOM COUNTY TOTAL CONFIRMED CASES

COVID-19 Confirmed Total Cases and Deaths, Whatcom County (Updated 4/14/2020)

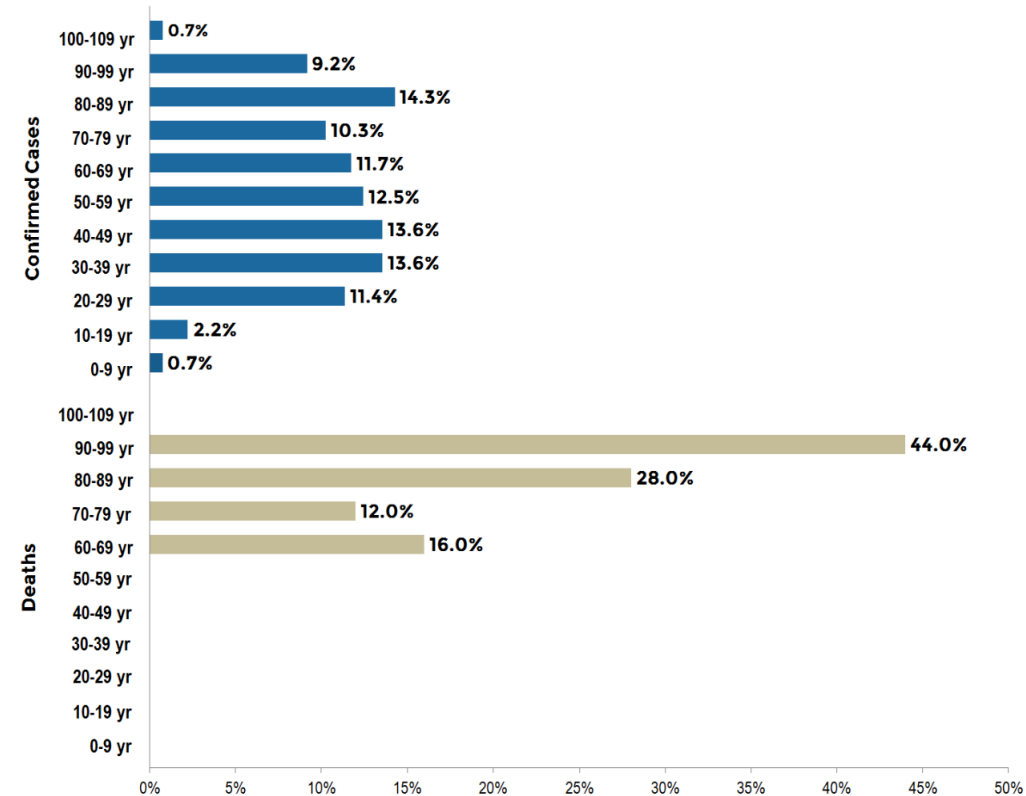


DATE	CONFIRMED CASES	DEATHS
4/18/20	277	26
4/18/20	276	25
4/17/20	271	25
4/16/20	271	25
4/15/20	269	25

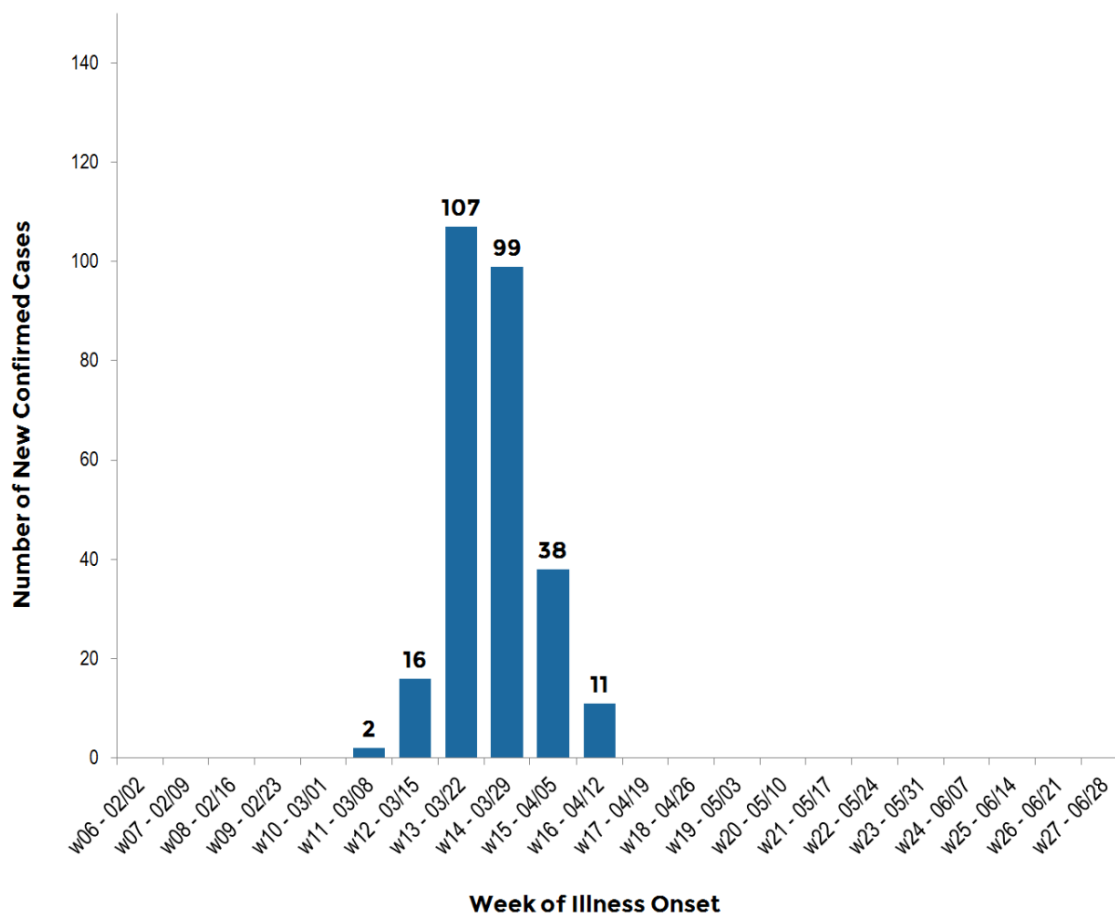
## COVID-19 Daily Confirmed Cases with 7-Day Moving Average, Whatcom County



## Confirmed Cases And Deaths, By Age Category



## Confirmed COVID-19 cases in Whatcom County, by week



### Hospital Resource Tracker

PeaceHealth St. Joseph Medical Center	4/18/20	4/17/20
Total Patients Admitted	153	153
Beds Available	26	26
Beds Total (current staffed)	179	179
Beds Total (when needed)	232	232
ICU Beds Available	30	30
ICU Beds Total	43	43
ICU Confirmed COVID	1	n/a
ICU Confirmed or Suspected COVID	1	n/a
ICU Surge Beds	10	10
Total Confirmed COVID	8	8
Total Confirmed or Suspected COVID	19	19
Total Surge Beds	10	10
Ventilators Available	43	43

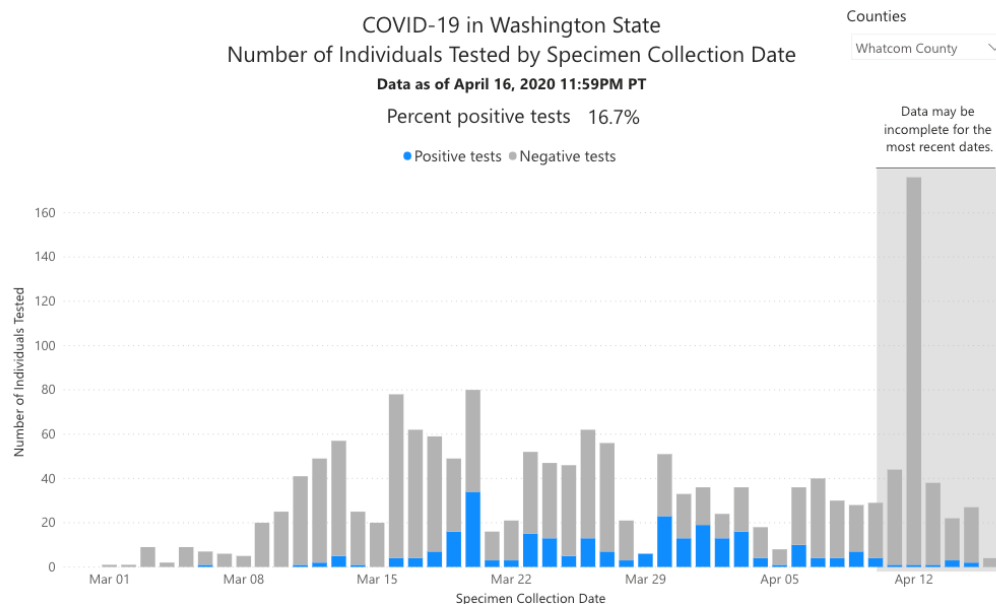
\*Hospital data was last updated on 4/18/20. New data will be added as it is available.

## INTELLIGENCE REPORT

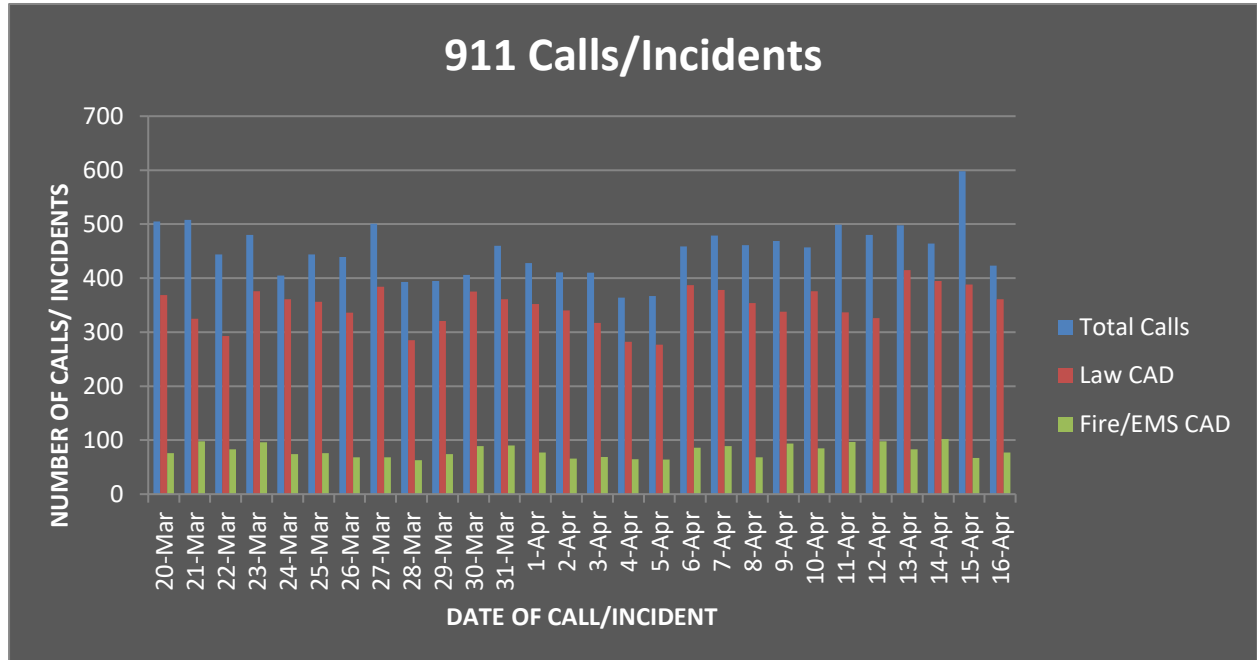
\*Whatcom County Health Department is updating COVID-19 case data daily, but not all counties and regions update over the weekend. The following charts were last updated on 4/16 and 4/17/20. New data will be added as it is made available.

**COVID-19 Confirmed Total Case Counts and Deaths by Region, Washington and Western States, US and British Columbia (as of April 17, 2020)**

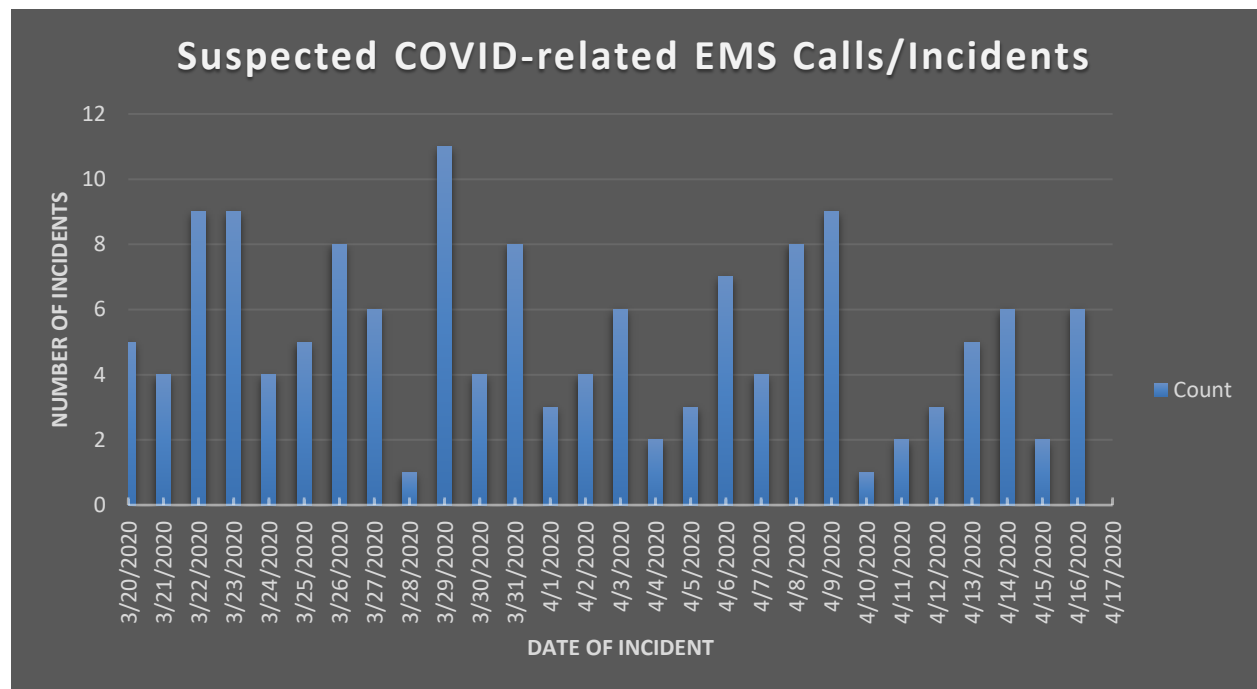
	4/17/2020 (Updated 4/16/2020)		4/16/2020 (Updated 4/15/2020)		4/15/2020 (Updated 4/14/2020)		4/14/2020 (Updated 4/13/2020)		4/13/2020 (Updated 4/12/2020)	
	Cases	Deaths	Cases	Deaths	Cases	Deaths	Cases	Deaths	Cases	Deaths
<a href="#">Island County</a>	164	8	163	8	162	8	159	8	158	7
<a href="#">San Juan County</a>	14	-	13	-	13	-	13	-	13	-
<a href="#">Skagit County</a>	218	6	209	6	200	6	193	6	191	6
<a href="#">Snohomish County</a>	2,032	86	1,988	80	1,950	77	1,907	73	1,867	69
<a href="#">King County</a>	4,809	320	4,697	312	4,620	303	4,549	296	4,426	292
<a href="#">Washington</a>	11,152	583	10,783	567	10,694	541	10,538	516	10,411	508
<a href="#">British Columbia</a>	1,575	77	1,561	75	1,517	72	1,490	69	1,445	58
<a href="#">Alaska</a>	300	9	293	9	285	9	277	8	272	8
<a href="#">California</a>	26,182	890	24,424	821	23,338	758	22,348	687	21,794	651
<a href="#">Hawaii</a>	541	9	530	9	517	9	504	9	499	9
<a href="#">Idaho</a>	1,609	41	1,587	41	1,464	39	1,453	33	1,426	27
<a href="#">Oregon</a>	1,736	64	1,663	58	1,633	55	1,584	53	1,527	52
<a href="#">U.S.</a>	632,548	31,071	605,390	24,582	579,005	22,252	554,849	21,942	525,704	20,486
<a href="#">Global</a>	2,182,734	147,384	2,088,425	139,419	2,008,850	129,045	1,942,360	121,726	1,870,076	116,052



COVID-19 data are reported as timely, accurately and completely as we have available. Data are updated as we receive information that is more complete and will change over time as we learn more.



*\*Note: A single incident can generate multiple 911 calls and incidents can occur without a 911 call. Data through April 16, 2020.*



*\*Note: Data through April 16, 2020.*

*\*\*Source: Whatcom County EMS*

## COMMUNICATIONS

**Incident Objective 6:** Keep the public, stakeholders, and the media informed of response activities

The Whatcom Unified Command **Joint Information Center (JIC)** updates and maintains the Whatcom COVID-19 website as the central repository for the most up to date information regarding COVID-19 for Whatcom County residents. Updates are continually made to report on current health data, government recommendations and orders, and media coverage. All information has been verified to come from reputable sources. The JIC coordinates with partner agencies throughout the State to maintain consistency when reporting information.

### Local Information (Coordinated through the JIC):

- WUC Whatcom COVID-19 website: <https://whatcomcovid.com/>
- Whatcom County Health Department website: <https://www.whatcomcounty.us/covid>
- Whatcom County News Flash: [www.co.whatcom.wa.us](http://www.co.whatcom.wa.us)
- [WUC Facebook](#)
- [WUC Twitter](#)
- [Whatcom County Health Department Facebook](#)

### State and Federal Information

- Governor Inslee's Proclamations: <https://www.governor.wa.gov/office-governor/official-actions/proclamations>
- President Trump extended the federal guidelines for social distancing through 4/30/20
- Washington State Department of Health provides guidance on wearing cloth face coverings  
<https://www.doh.wa.gov/Portals/1/Documents/1600/coronavirus/ClothFacemasks.pdf>

### JIC Updates

- WCHD Website [www.whatcomcounty.us/covid](http://www.whatcomcounty.us/covid)
  - Case updates
- Whatcom Unified Command website [www.whatcomcovid.com](http://www.whatcomcovid.com)
  - Finished the process of adding accordions to pages to improve functionality and the mobile site experience
  - Minor updates as needed
  - Responded to website inquiries
- WCHD Facebook Updates
  - Healthy Activities for Kids
  - 4-19-20 Case Count Update
- WUC Facebook Updates
  - Pending approval - How you can help
- Other
  - Sending Media Advisory Sunday afternoon for Monday press conference
  - Ongoing conversations with media
  - Thought partnering re: donations process, communications

### Local Headlines:

- Bellingham Herald: "[How much is the coronavirus pandemic going to cost Whatcom County and its cities?](#)" (April 19, 2020)

- KOMO: "When family reunions are '6 feet of space, and an international border!'" (April 18, 2020)
- Seattle Times: "As coronavirus cases in Yakima Valley agriculture spike, advocates for growers and workers react differently to new state guidelines" (April 19, 2020)

#### State and Federal Headlines:

- Seattle Times: "Pregnant during a pandemic: Seattleites share their concerns about birth, delivery and beyond" (April 19, 2020)
- KOMO: "With no school, calls drop across the country but child abuse hasn't amid virus" (April 18, 2020)
- LA Times: "U.S. factories in Mexico are still open. As the coronavirus spreads, workers are dying" (April 18, 2020)
- KOMO: "Protest against state closure planned for Sunday in Olympia" (April 18, 2020)

#### Upcoming and Continuing JIC Priorities

- Continue to prioritize messaging based on current Incident Objectives
- Re-organize the health department website to improve accessibility and connect users with current resources.
- We continue to work with Liaison to determine local COVID-19 call center needs and the best tool to address local phone inquiries.
- Continue to reinforce the importance of staying home and staying healthy for our community.
- Work with Liaison to develop a plan for distribution of communication materials for community groups.
- We are working on a more robust, strategic communications plan incorporating an equity focus throughout our messaging.
- Promote resources relevant to distance learning for out-of-school students.
- Prepare materials related to new Isolation and Quarantine Facility (IQF) at Motel 6 site.
- Collect, summarize, and publish information about PPE distributed by WUC.
- Provide additional data with supporting contextual information for public consumption.
- Develop materials to explain planning process and communicate context of preparations.
- Finalize messaging and responses to questions related to summer activities.
- Greater outreach to farming communities.
- Help set expectations for May.
- Organize and expand mental health resources.

## WHATCOM UNIFIED COMMAND INFORMATION

#### INCIDENT OBJECTIVES

1. Prevent and mitigate the spread of COVID-19
  - a. Provide essential medical screening and care
  - b. Establish isolation facilities to meet county-wide demand
  - c. County Health Officer to provide data-driven decisions on public health strategies
2. Provide for the most vulnerable members of the community
3. Ensure adequacy of First Responder personnel resources
  - a. Provide resources and supplies to healthcare facilities and first responders as requested
4. Maintain Essential Services
  - a. Identify Critical Functions/Services (e.g., utilities, continuity of essential government services, public transportation etc.)
  - b. Maintain Childcare for Essential Personnel

- c. Monitor Health of Essential Personnel
- d. Minimize Staffing in EOC
- e. Establish Surge Capacity Capability
- 5. Monitor and mitigate economic impacts on the community
  - a. Assess agricultural, aquacultural, fishery and farming impacts
  - b. Monitor and assess impacts to border restrictions
  - c. Monitor and assess impacts on local government ensuring compliance with state and FEMA guidance
- 6. Keep the public, stakeholders, and the media informed of response activities
- 7. Manage a coordinated interagency response effort that reflects the makeup of Unified Command

## SOURCES & RELEVANT SITES

IAP Software

WADOH Daily Epi Report

WADOH Map: <https://www.arcgis.com/apps/opsdashboard/index.html#/3614241b1c2b4e519ae1cf52e2c3d560>

Whatcom County Health Department <http://www.whatcomcounty.us/3329/Novel-Coronavirus-COVID-19#case>

Washington State Hospital Association <https://www.wsha.org/for-patients/coronavirus/coronavirus-tracker/>

PeaceHealth Regional Situation Reports

Whatcom County Health Department Situation Reports

Washington: <https://www.doh.wa.gov/emergencies/coronavirus>

British Columbia: <https://www.canada.ca/en/public-health/services/diseases/2019-novel-coronavirus-infection.html>

Alaska: <http://dhss.alaska.gov/dph/Epi/id/Pages/COVID-19/monitoring.aspx>

California: <https://www.cdph.ca.gov/Programs/CID/DCDC/Pages/Immunization/ncov2019.aspx>

Hawaii: <https://hawaiicovid19.com/>

Idaho: <https://coronavirus.idaho.gov/>

Oregon: <https://govstatus.egov.com/OR-OHA-COVID-19>

CDC <https://www.cdc.gov/coronavirus/2019-ncov/cases-updates/cases-in-us.html>

Global: <https://coronavirus.jhu.edu/map.html>

## SECTION UPDATES

### LOGISTICS

- 1. Continued work to set up the Byron Avenue IQ facility.
- 2. Continued work to implement the cloth mask collection, sanitizing, and distribution plan.
- 3. Completed coordination with Shuksan and WTA on food delivery to facility until their kitchen facility become operational.

### OPERATIONS

- 1. Continued work to set up the Byron Avenue IQ facility.

### PLANNING

- 1. Completed report on supplies WUC has sent to Skilled Nursing Facilities (SNF's).
- 2. Developing training document on how to check-in/check-out of IAP when working outside the EOC.
- 3. Initiated contingency planning for Governor's orders regarding essential activity.

REPORT PREPARED BY:  
Situation Unit

REPORT APPROVED BY:  
Incident Command

DATE:  
04/19/20

TIME:  
15:30