

WHATCOM UNIFIED SITUATION REPORT



REPORT #: 20201007.1	DATE: 10/07/2020	TIME: 16:00
INCIDENT NAME: COVID-2019	OPERATIONAL PERIOD: 22	MISSION NUMBER: 20-0265

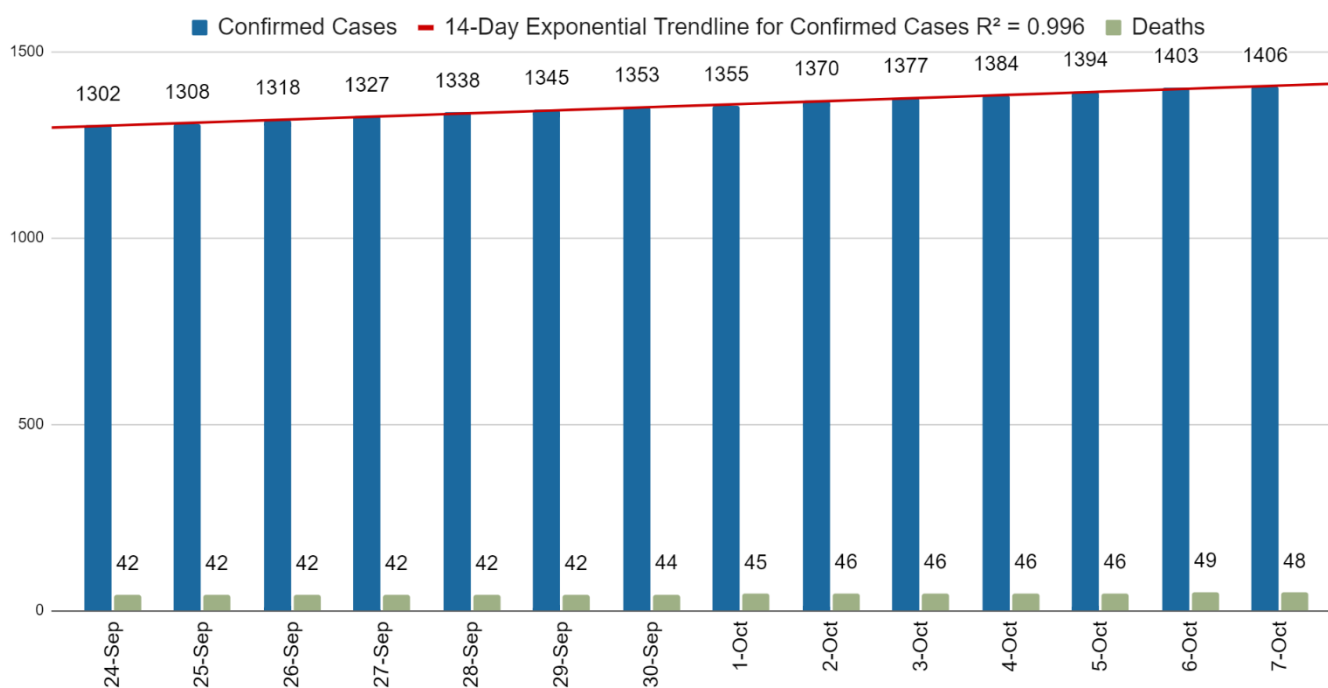
WHATCOM UNIFIED INCIDENT COMMAND STATUS

ACTIVATION: Whatcom Unified Emergency Command Center	ACTIVATION STATUS: Partial	HOURS OF OPERATION: 8:00 am – 4:30 pm
--	--------------------------------------	---

GENERAL SITUATION

ICS 202

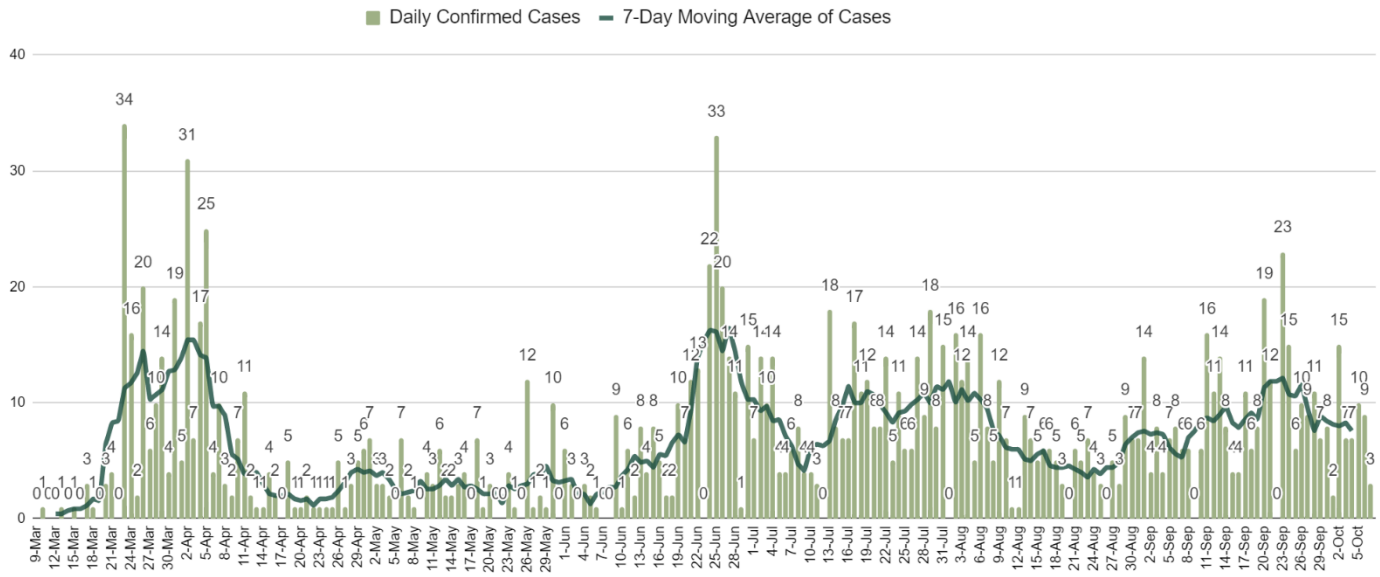
14-Day COVID-19 Confirmed Total Cases and Deaths, Whatcom County



DATE	CONFIRMED CASES	DEATHS
10/07/2020*	1406	48
10/06/2020*	1403	49
10/05/2020	1394	46
10/04/2020	1384	46
10/03/2020	1377	46

*Data provided by the Whatcom County Health Dept is considered preliminary. As they verify cases, we can expect delays and fluctuations in data reported. Data was last updated 10/05/2020.

COVID-19 Daily Confirmed Cases with 7-Day Moving Average, Whatcom County



COVID-19 in Whatcom County

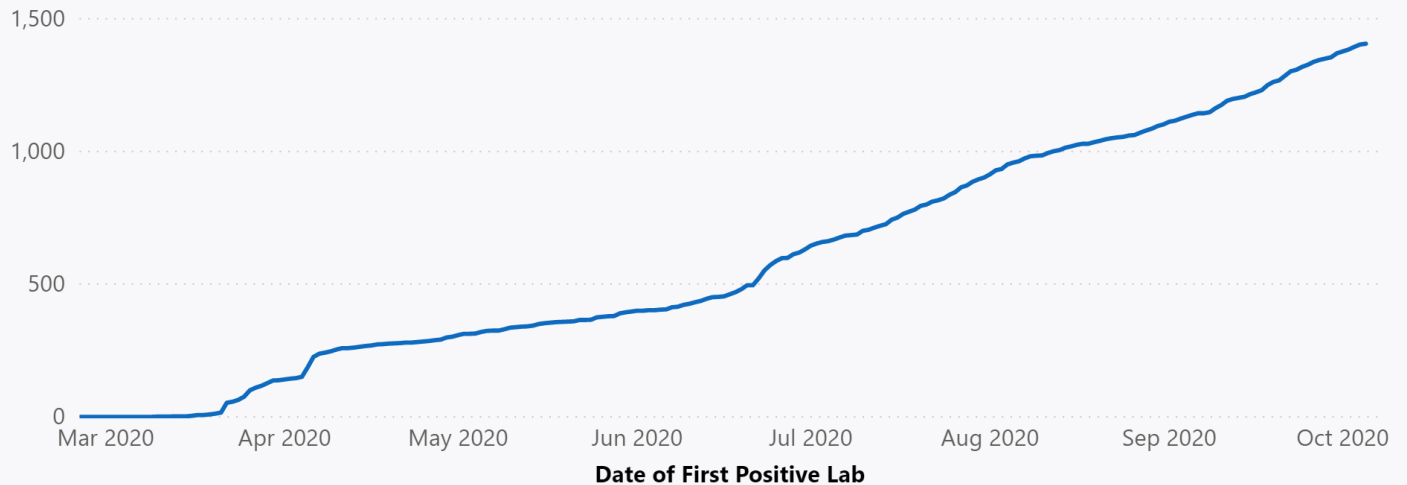
Cumulative Cases, Hospitalizations and Deaths

This chart includes the total number of people who have tested positive for COVID-19 since January 21, 2020. The chart begins on February 28, which is when community transmission was first reported in Washington State.

[Learn More](#)

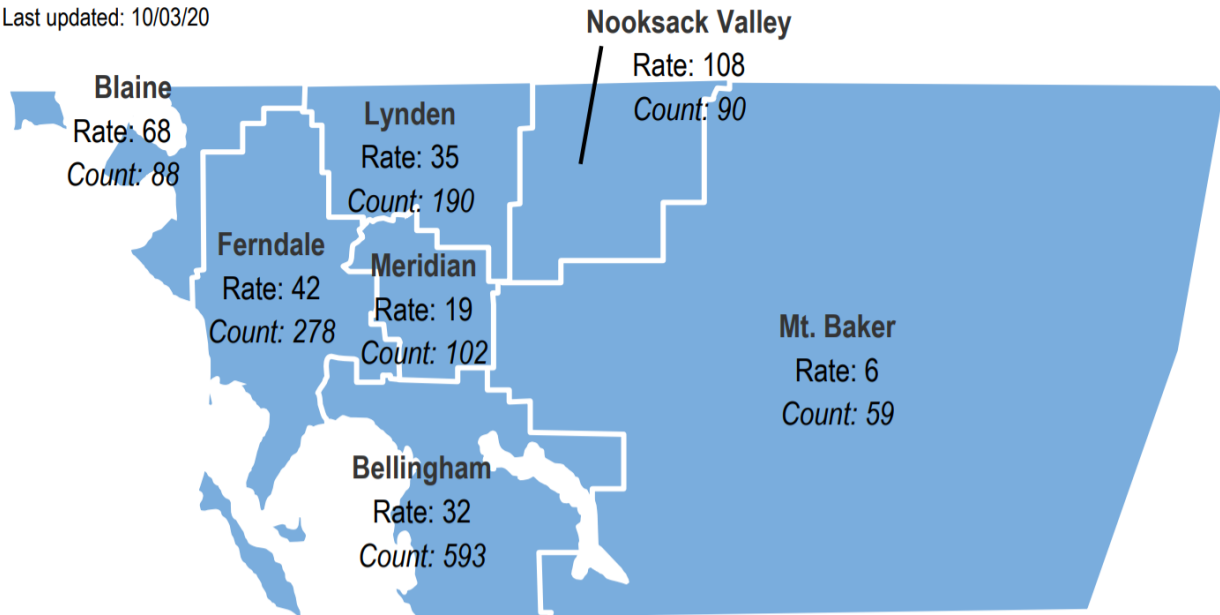


Cumulative Case Counts



COVID-19 in Whatcom County, by School District Recent Two Week Case Rates & Cumulative Counts

Last updated: 10/03/20



Rate: Number of confirmed cases per 100,000 people for the past two weeks (9/20-10/03/20) *See [Data Explainer](#) for info

State Goal: Fewer than 25 cases per 100,000 people during the prior two weeks

Count: Cumulative cases of COVID-19

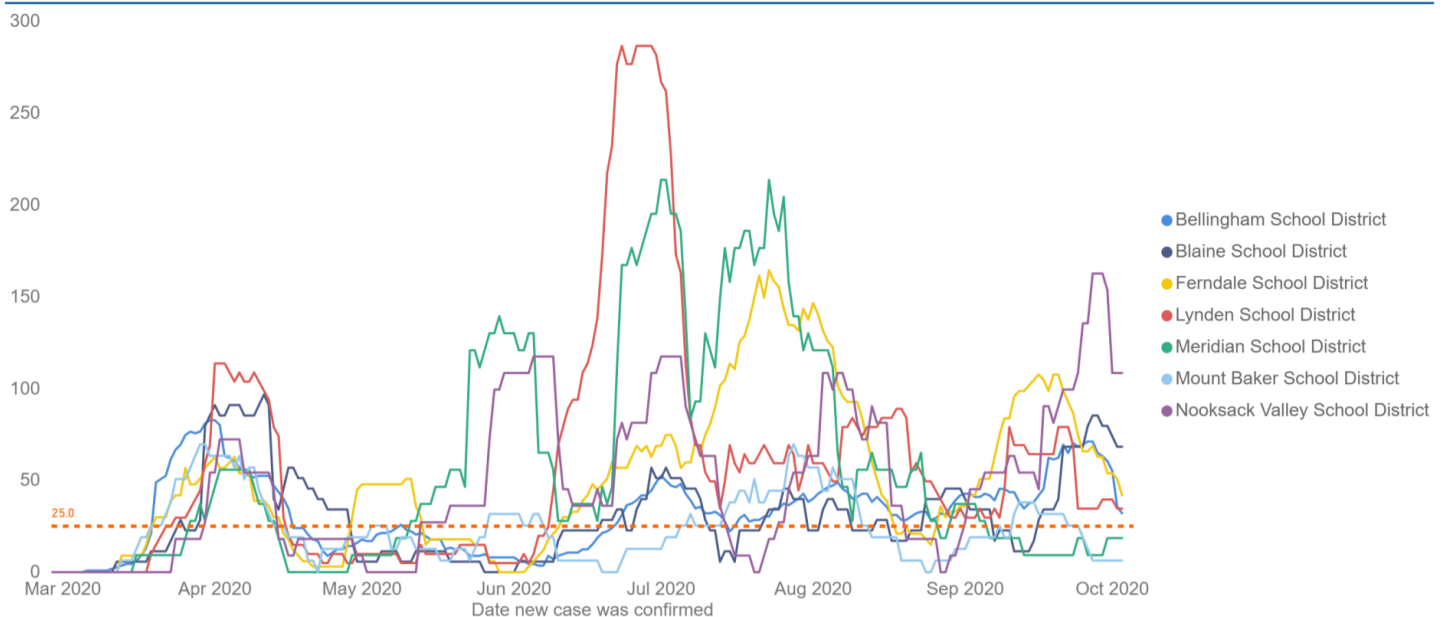
- Limited testing may cause mapping to misrepresent the geographic impact of COVID-19 illness in Whatcom County.
- When analyzing data geographically, school districts are used as community boundaries because people often identify their community in connection to schools and school districts.

Newly diagnosed cases per 100,000 people during the prior two weeks, by Whatcom County School District Geography

*see [Data Explainer](#) or [FAQs](#)

Data updated through 10/03/2020

Goal: Fewer than 25 cases per 100,000 people during the prior two weeks



County	Cases	Hospitalizations	Deaths
<input checked="" type="checkbox"/> Whatcom County			
Age 20-39	506	13	1
Age 40-59	332	32	1
Age 0-19	255	1	0
Age 60-79	197	32	8
Age 80+	104	22	36
Unknown Age	0	0	0

*Source: Whatcom County Health Department: <https://www.whatcomcounty.us/3329/Novel-Coronavirus-COVID-19>

INTELLIGENCE REPORT

Data for PeaceHealth St. Joseph Medical Center

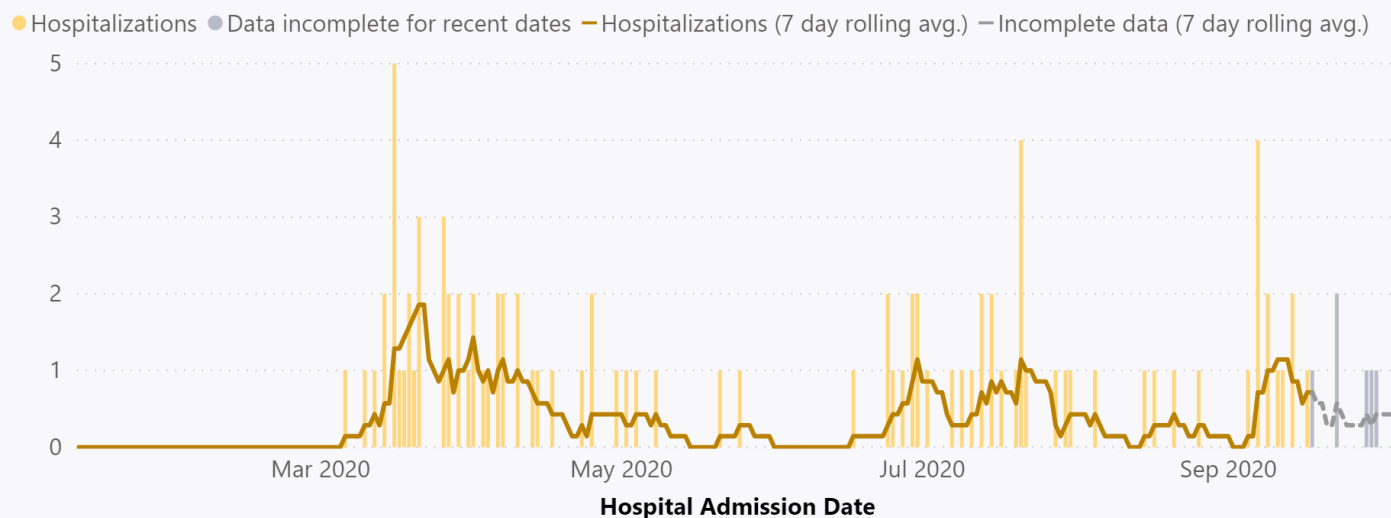
Updated as of 10/07/2020:

- 3 confirmed positive COVID-19 patients
- 0 suspected COVID-19 patients
- 0 ventilators in use for COVID-19 positive patients
- 42 ventilators available
- 42 surge/overflow beds available
- 0% surge/overflow beds occupied

* The data reported is the most current information provided from PeaceHealth St. Joseph Medical Center. Information is updated as soon as it is available

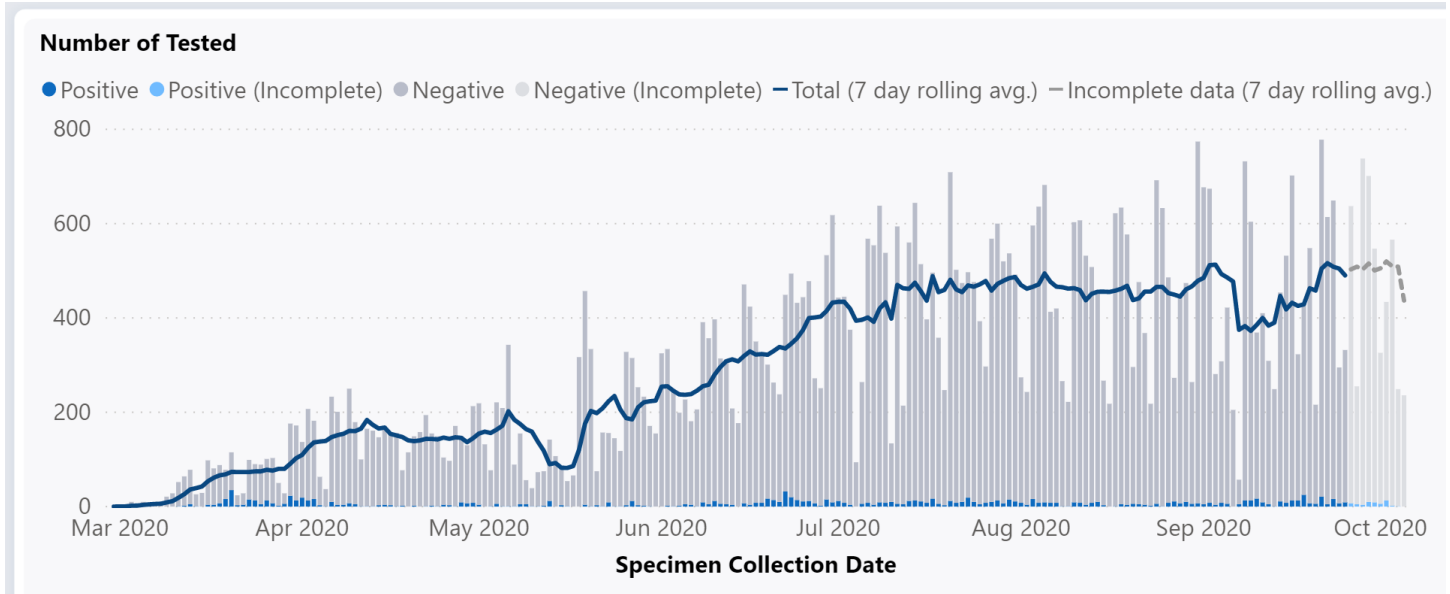
WHATCOM COUNTY HOSPITALIZATION COUNTS

Hospitalizations Counts



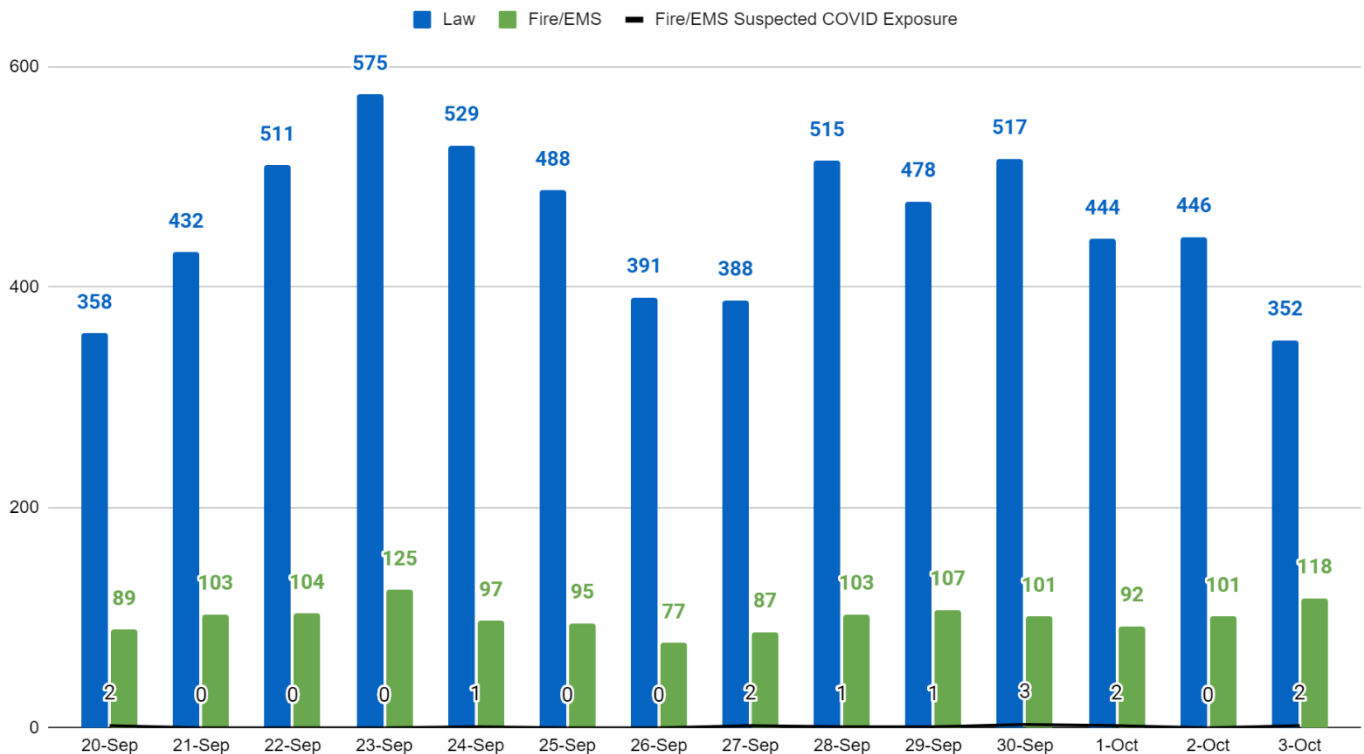
**Source: Washington State Department of Health <https://www.doh.wa.gov/Emergencies/NovelCoronavirusOutbreak2020COVID19/DataDashboard>

WHATCOM COUNTY-NUMBER OF INDIVIDUALS TESTED



**Source: Washington State Department of Health2 <https://www.doh.wa.gov/Emergencies/NovelCoronavirusOutbreak2020COVID19/DataDashboard>

14-Day 911 Calls for Law and Fire/EMS with Fire/EMS Suspected COVID Exposure, Whatcom County



*Note: A single incident can generate multiple 911 calls and incidents can occur without a 911 call.

**Source: Whatcom County EMS

COMMUNICATIONS

Incident Objective 6: Keep the public, stakeholders, and the media informed of response activities

The Whatcom Unified Command **Joint Information Center (JIC)** updates and maintains the Whatcom COVID-19 website as the central repository for the most up to date information regarding COVID-19 for Whatcom County residents. Updates are continually made to report on current health data, government recommendations and orders, and media coverage. All information has been verified to come from reputable sources. The JIC coordinates with partner agencies throughout the State to maintain consistency when reporting information.

Local Information (Coordinated through the JIC):

- WUC Whatcom COVID-19 website: <https://whatcomcovid.com/>
- Whatcom County Health Department website: <https://www.whatcomcounty.us/covid>
- Whatcom County News Flash: www.co.whatcom.wa.us
- [WUC Facebook](#)
- [WUC Twitter](#)
- [Whatcom County Health Department Facebook](#)

State and Federal Information

- [Governor Inslee's Proclamations](#)
- [Washington State Department of Health provides guidance on wearing cloth face coverings](#)
- [Governor's phased approach](#)
- [Washington State face covering directive](#)
- [Washington State COVID-19 risk assessment dashboard](#)

JIC Updates

- WCHD Website www.whatcomcounty.us/covid
 - [Updated weekly charts](#)
- Whatcom Unified Command website www.whatcomcovid.com
 - Responded to inquiries and posted daily Status Report
- Social Media Posts
 - WCHD
 - [Your choices matter](#)
 - [Everson mobile testing site to close](#)
 - WUC
 - [Everson mobile testing site to close](#)

10-7-20

Local and State

- Bellingham Herald: [COVID fatigue has set in across Washington. Collective mental health eroding, data shows](#) - 10-7-20
- Bellingham Herald: [Whatcom sees three more COVID-19 cases, state reports Tuesday](#) - 10-7-20
- Bellingham Herald: [Gov. Jay Inslee loosens COVID-19 restrictions for some activities in Washington state](#) - 10-7-20
- Seattle Times: [Coronavirus daily news updates, October 7: What to know today about COVID-19 in the Seattle area, Washington state and the world](#) - 10-7-20
- My Northwest: [COVID-19 updates: UW, Public Health take action to slow campus outbreak](#) - 10-7-20
- My Northwest: [What national data dashboard tells us about how safe it is to send kids back to schools](#) - 10-6-20

National

- NPR: [White House Eyes Piecemeal Pandemic Aid After Trump Ends Talks On Overall Package](#) - 10-7-20

- NPR: [FDA Releases Long-Awaited COVID-19 Vaccine Guidance](#) - 10-6-20
- New York Times: [New Zealand Stamps Out the Virus. For a Second Time.](#) - 10-7-20
- Reuters: [Abbott says new data shows rapid COVID-19 test used at White House is highly accurate](#) - 10-7-2
- Route Fifty: [Distrusting Trump, States Plan to Vet COVID Vaccines Themselves. Bad Idea, Say Experts.](#) - 10-7-20
- The Conversation: [When COVID-19 superspreaders are talking, where you sit in the room matters](#) - 10-5-2
- LA Times: [Serious COVID-19 outbreaks hit California colleges despite intense preparation](#) - 10-7-20

Upcoming and Continuing JIC Priorities

- Continue with [mask messaging and information](#).
- Communicate about [Phase 2 and Safe Start](#).
- Communicate about flu vaccines.
- Communicate about upcoming holidays.
- Help set expectations for progression of phased reopening.
- Continue to prioritize messaging based on current Incident Objectives.
- Work to distribute communication materials for community groups.
- Increase messaging for Spanish-speakers.
- Increase messaging for young adults including via social marketing.
- Communicate about testing access.
- Increase outreach to faith-based communities.
- Support WUC partnership work, including Border Task Force, small city Mayors' meetings, etc.

WHATCOM UNIFIED COMMAND INFORMATION

INCIDENT OBJECTIVES: Operational Period 22

1. Anticipate and develop plans to address additional waves of COVID-19 infections.
2. Prevent and mitigate the spread of COVID-19.
3. Provide for the most vulnerable members of the community.
4. Ensure adequacy of First Responder/Healthcare personnel and equipment/supplies.
5. Support maintenance of Phase 2 status for Whatcom County.
6. Keep the public, stakeholders, and the media informed of response activities.
7. Manage a coordinated interagency response effort that reflects the makeup of Unified Command.

SOURCES & RELEVANT SITES

IAP Software
WADOH Daily Epi Report
WADOH Map: <https://www.arcgis.com/apps/opsdashboard/index.html#/3614241b1c2b4e519ae1cf52e2c3d560>
Whatcom County Health Department <http://www.whatcomcounty.us/3329/Novel-Coronavirus-COVID-19#case>
Whatcom County EMS
Washington State Hospital Association- Hospital Supply Tracker
Whatcom County Health Department Situation Reports
Washington: <https://www.doh.wa.gov/emergencies/coronavirus>
British Columbia: <https://www.canada.ca/en/public-health/services/diseases/2019-novel-coronavirus-infection.html>
Alaska: <http://dhss.alaska.gov/dph/Epi/id/Pages/COVID-19/monitoring.aspx>
California: <https://www.cdph.ca.gov/Programs/CID/DCDC/Pages/Immunization/ncov2019.aspx>
Hawaii: <https://hawaiiicovid19.com/>

Idaho: <https://coronavirus.idaho.gov/>

Oregon: <https://govstatus.egov.com/OR-OHA-COVID-19>

CDC <https://www.cdc.gov/coronavirus/2019-ncov/cases-updates/cases-in-us.html>

Global: <https://coronavirus.jhu.edu/map.html>

SECTION UPDATES

LOGISTICS

1. Provide support and supplies to Byron Avenue I/Q facility utilizing an inventory and monitoring system to streamline ordering of consumable supplies.
2. Continue to update sourcing options for PPE and connecting customers directly to distributors on our supply list, when feasible.
3. Continue to interact with the State for meeting PPE requirements.
4. Support volunteer staffing for ongoing, weekly food distribution efforts.
5. Provide resources, support, and volunteer staffing needed for the Whatcom County low barrier COVID-19 mobile testing program.
6. Research and visit possible facilities and sites to be utilized for outdoor WUC operations during inclement weather.

OPERATIONS

1. Support Wednesday's scheduled food stocking efforts and provide traffic control support during food distribution operations.
2. Continue operations of the Byron Avenue I/Q facility with the admittance of community members needing isolation/quarantine. Currently, three rooms are occupied. Cumulatively, the I/Q facility has provided a total of 795 bed days of service for 104 community members.
3. Refine the operations plan for Whatcom County's low barrier COVID-19 mobile testing program.
4. Partnering with the Whatcom County Health Department to support the mobile COVID-19 testing program.

PLANNING

1. Continue to coordinate with local and regional healthcare agencies for planning for COVID-19 medical surge and medical isolation/quarantine facilities.
2. Review and edit the status report template to be utilized for data updates in the medical surge plan.
3. Assist food security community partner agencies in transitioning their food distribution programs to self-supported, sustainable operations.
4. Provide feedback on the operations plan submitted for Whatcom County's low barrier COVID-19 mobile testing program.
5. Develop inclement weather plans for all outdoor WUC operations and work in tandem with the Joint Information Center on an appropriate communications plan for inclement weather updates.

REPORT PREPARED BY:
Situation Unit

REPORT APPROVED BY:
Incident Command

DATE:
10/07/20

TIME:
16:00