

WHATCOM UNIFIED SITUATION REPORT



REPORT #: 20201020.1	DATE: 10/20/2020	TIME: 16:00
INCIDENT NAME: COVID-2019	OPERATIONAL PERIOD: 23	MISSION NUMBER: 20-0265

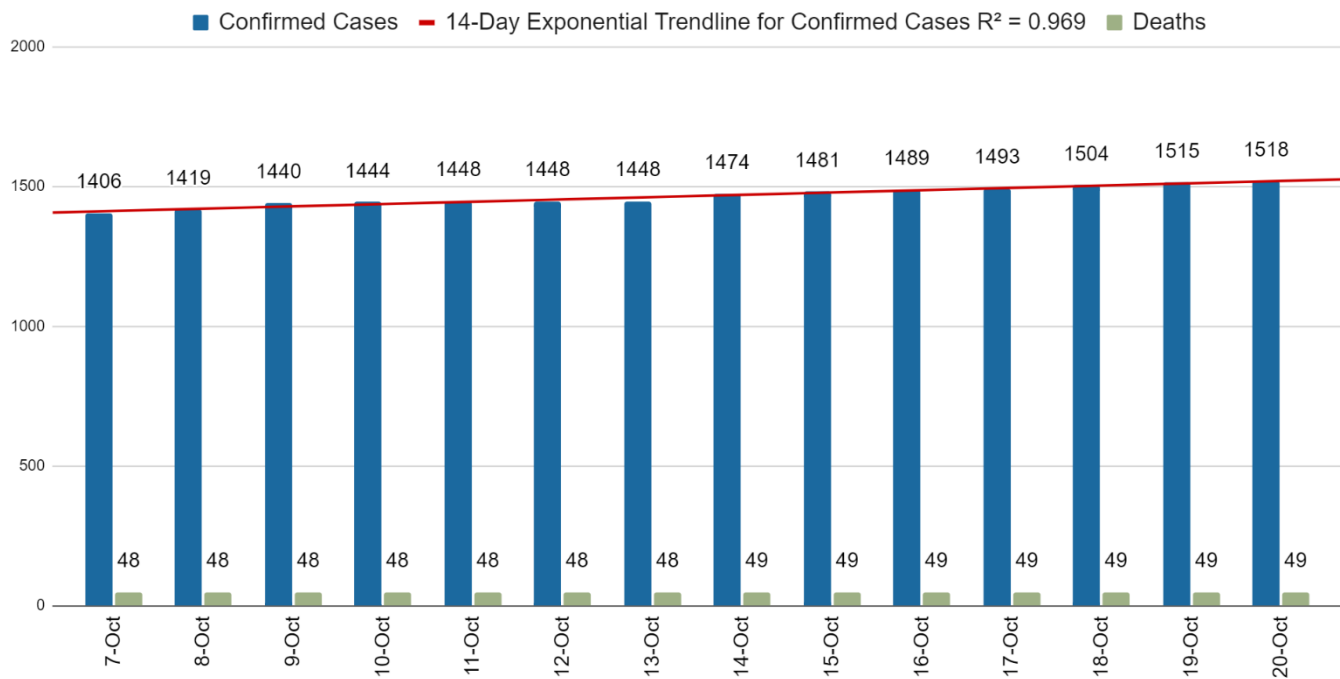
WHATCOM UNIFIED INCIDENT COMMAND STATUS

ACTIVATION: Whatcom Unified Emergency Command Center	ACTIVATION STATUS: Partial	HOURS OF OPERATION: 8:00 am – 4:30 pm
---	-------------------------------	--

GENERAL SITUATION

ICS 202

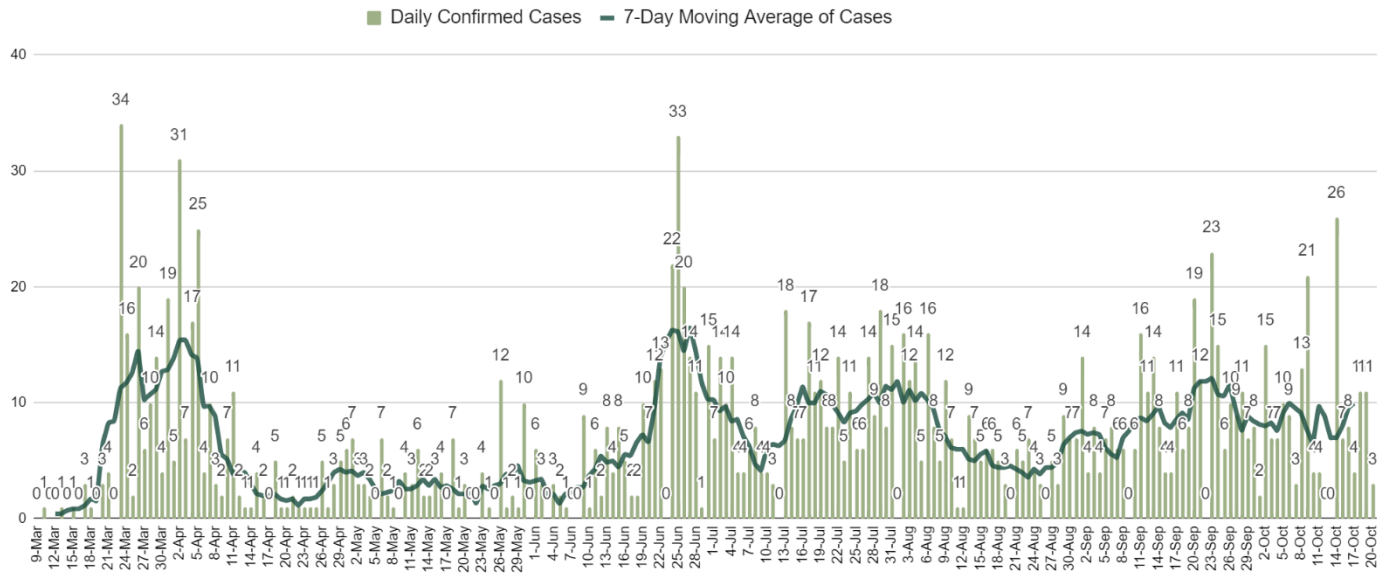
14-Day COVID-19 Confirmed Total Cases and Deaths, Whatcom County



DATE	CONFIRMED CASES	DEATHS
10/20/2020*	1518	49
10/19/2020*	1515	49
10/18/2020	1504	49
10/17/2020	1493	49
10/16/2020	1489	49

*Data provided by the Whatcom County Health Dept is considered preliminary. As they verify cases, we can expect delays and fluctuations in data reported. Data was last updated 10/18/2020.

COVID-19 Daily Confirmed Cases with 7-Day Moving Average, Whatcom County

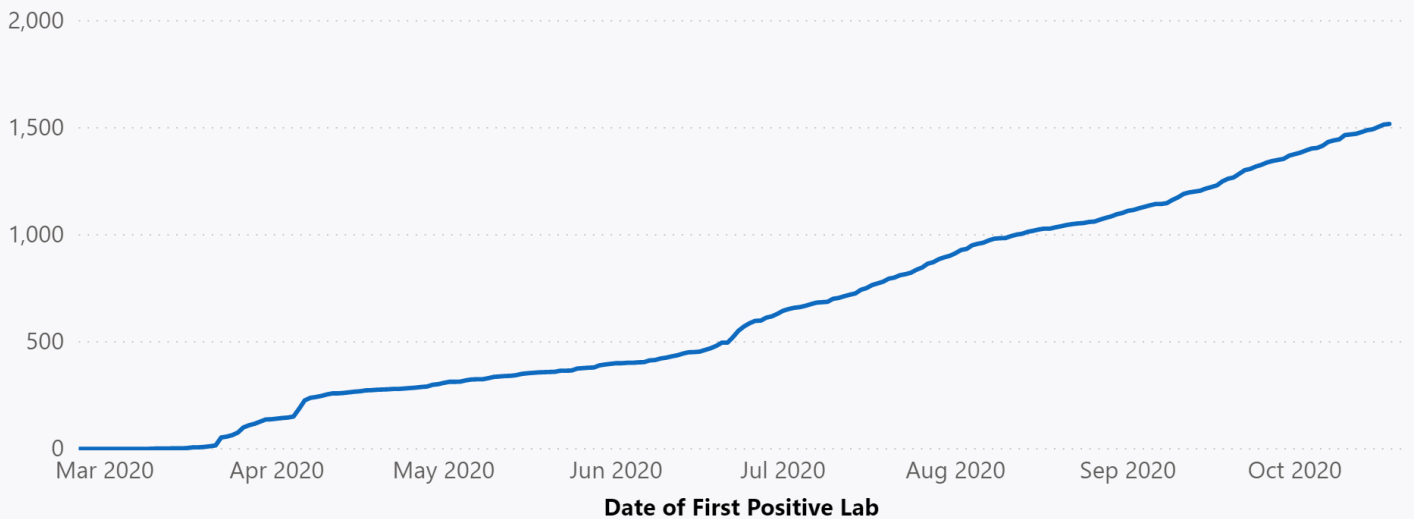


COVID-19 in Whatcom County

Cumulative Cases, Hospitalizations and Deaths

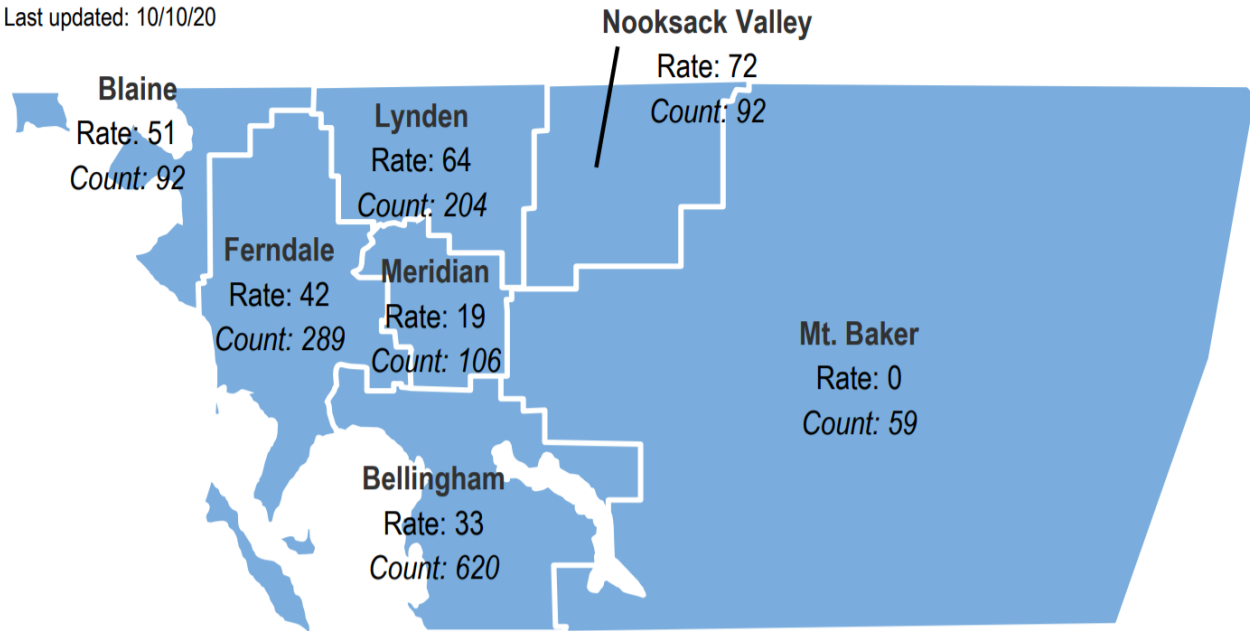
This chart includes the total number of people who have tested positive for COVID-19 since January 21, 2020. The chart begins on February 28, which is when community transmission was first reported in Washington State.

Cumulative Case Counts



COVID-19 in Whatcom County, by School District Recent Two Week Case Rates & Cumulative Counts

Last updated: 10/10/20



Rate: Number of confirmed cases per 100,000 people for the past two weeks (9/27-10/10/20) *See [Data Explainer](#) for info

State Goal: Fewer than 25 cases per 100,000 people during the prior two weeks

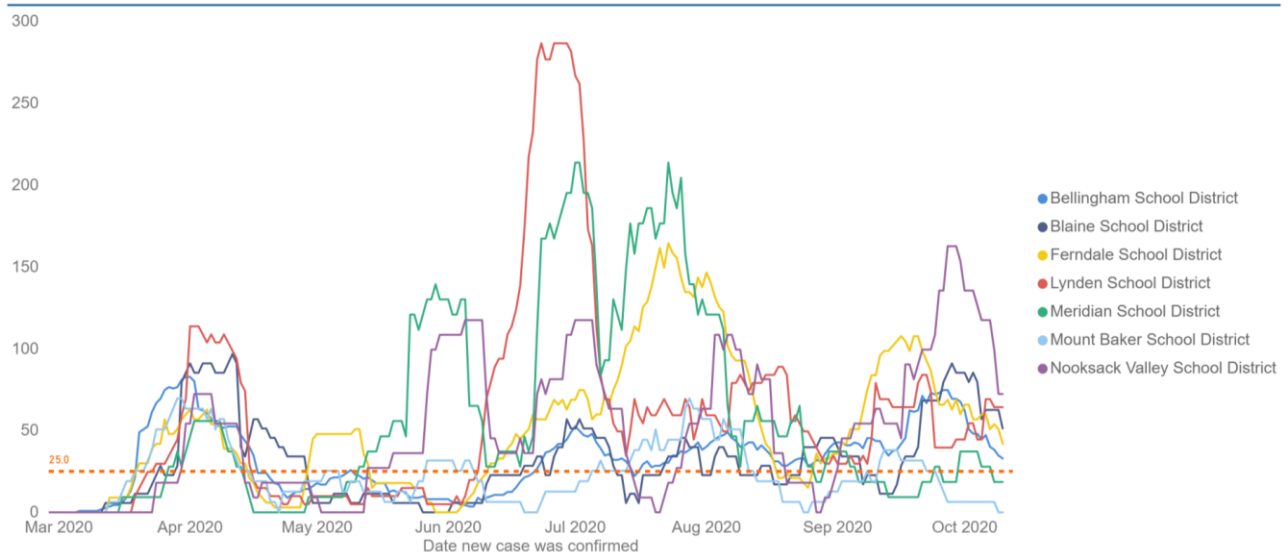
Count: Cumulative cases of COVID-19

- Limited testing may cause mapping to misrepresent the geographic impact of COVID-19 illness in Whatcom County.
- When analyzing data geographically, school districts are used as community boundaries because people often identify their community in connection to schools and school districts.

Newly diagnosed cases per 100,000 people during the prior two weeks, by Whatcom County School District Geography *see [Data Explainer](#) or [FAQs](#)

Data updated through 10/10/2020

Goal: Fewer than 25 cases per 100,000 people during the prior two weeks



County	Cases	Hospitalizations	Deaths
<input checked="" type="checkbox"/> Whatcom County			
Age 20-39	560	13	0
Age 40-59	353	33	1
Age 0-19	277	1	0
Age 60-79	215	35	8
Age 80+	110	22	40
Unknown Age	0	0	0

*Source: Whatcom County Health Department: <https://www.whatcomcounty.us/3329/Novel-Coronavirus-COVID-19>

INTELLIGENCE REPORT

Data for PeaceHealth St. Joseph Medical Center

Updated as of 10/20/2020:

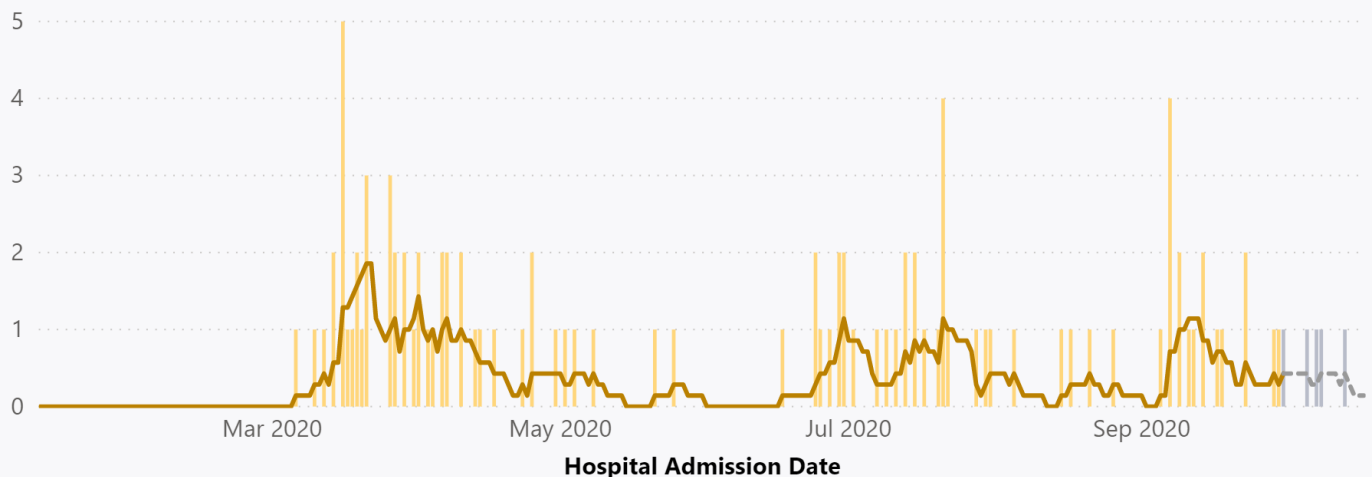
- 4 confirmed positive COVID-19 patients
- 0 suspected COVID-19 patients
- 1 ventilator in use for a COVID-19 positive patient
- 39 ventilators available
- 42 surge/overflow beds available
- 0% surge/overflow beds occupied

* The data reported is the most current information provided from PeaceHealth St. Joseph Medical Center. Information is updated as soon as it is available

WHATCOM COUNTY HOSPITALIZATION COUNTS

Hospitalizations Counts

● Hospitalizations ● Data incomplete for recent dates — Hospitalizations (7 day rolling avg.) — Incomplete data (7 day rolling avg.)

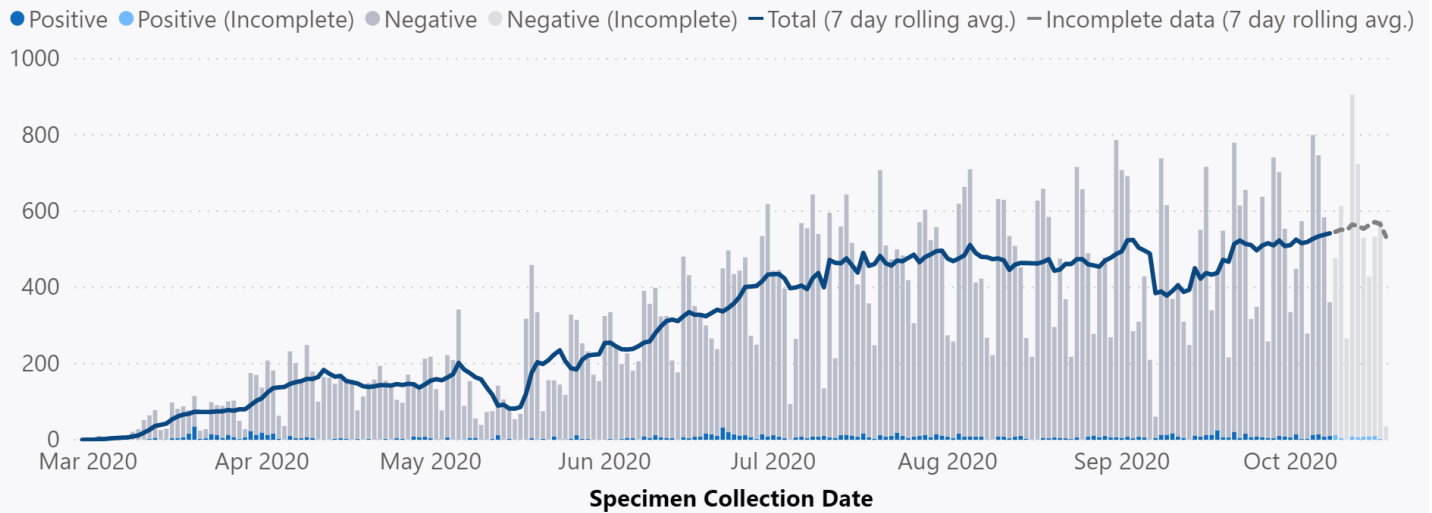


**Source: Washington State Department of Health

<https://www.doh.wa.gov/Emergencies/NovelCoronavirusOutbreak2020COVID19/DataDashboard>

WHATCOM COUNTY-NUMBER OF INDIVIDUALS TESTED

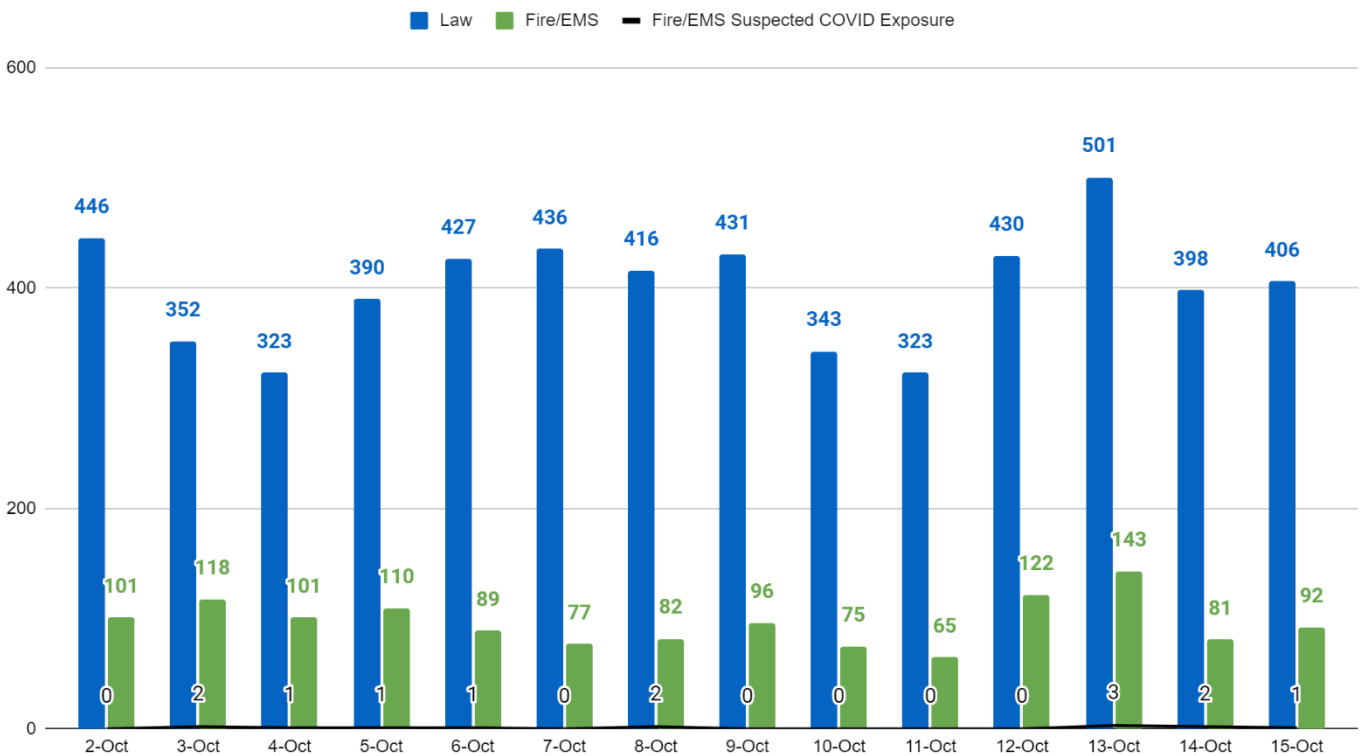
Number of Tested



****Source: Washington State Department of Health2**

<https://www.doh.wa.gov/Emergencies/NovelCoronavirusOutbreak2020COVID19/DataDashboard>

14-Day 911 Calls for Law and Fire/EMS with Fire/EMS Suspected COVID Exposure, Whatcom County



***Note: A single incident can generate multiple 911 calls and incidents can occur without a 911 call.**

****Source: Whatcom County EMS**

COMMUNICATIONS

Incident Objective 6: Keep the public, stakeholders, and the media informed of response activities

The Whatcom Unified Command **Joint Information Center (JIC)** updates and maintains the Whatcom COVID-19 website as the central repository for the most up to date information regarding COVID-19 for Whatcom County residents. Updates are continually made to report on current health data, government recommendations and orders, and media coverage. All information has been verified to come from reputable sources. The JIC coordinates with partner agencies throughout the State to maintain consistency when reporting information.

Local Information (Coordinated through the JIC):

- WUC Whatcom COVID-19 website: <https://whatcomcovid.com/>
- Whatcom County Health Department website: <https://www.whatcomcounty.us/covid>
- Whatcom County News Flash: www.co.whatcom.wa.us
- [WUC Facebook](#)
- [WUC Twitter](#)
- [Whatcom County Health Department Facebook](#)

State and Federal Information

- [Governor Inslee's Proclamations](#)
- [Washington State Department of Health provides guidance on wearing cloth face coverings](#)
- [Governor's phased approach](#)
- [Washington State face covering directive](#)
- [Washington State COVID-19 risk assessment dashboard](#)

JIC Updates

- WCHD Website www.whatcomcounty.us/covid
 - [Updated weekly testing numbers chart](#)
 - [Weekly data charts update delayed](#)
- Whatcom Unified Command website www.whatcomcovid.com
 - Responded to inquiries and posted daily Status Report
- Social Media Posts
 - WCHD
 - [COVID-19 testing info](#)

Local and State

- Bellingham Herald: [Whatcom County sees three new COVID-19 cases, state reports Monday](#) - 10-20-20
- Seattle Times: [Coronavirus daily news updates, Oct. 20: What to know today about COVID-19](#) - 10-20-20
- Seattle PI: [US overdose deaths appear to rise amid coronavirus pandemic](#) - 10-20-20
- Tacoma News Tribune: [Itching to dine out? Here's a guide to WA's COVID dining rules and how to follow them](#) - 10-20-20
- Spokesman Review: [Coeur d'Alene schools regroup in face of COVID-19 surge](#) - 10-20-20
- Spokesman Review: [Washington officials examining about 100 cases that appear to be COVID-19 reinfections](#) - 10-20-20
- My Northwest: [The difficulty in developing immunity to COVID-19](#) - 10-20-20

National

- NPR: [U.K. Preparing COVID-19 Vaccine Trials That Deliberately Infect Study Subjects](#) - 10-20-20
- New York Times: [Covid-19 Live Updates: Pennsylvania Joins New York's Quarantine List, But Not Connecticut or New Jersey Despite Rise in Cases](#) - 10-20-20

- Reuters: [Most people would get COVID-19 vaccine if offered by government or employer: poll](#) - 10-20-20
- Route Fifty: [Covid-19 Patients Swamp Rural Hospitals](#) - 10-20-20
- Route Fifty: [Most Home Health Aides 'Can't Afford Not to Work' — Even When Lacking PPE](#) - 10-20-20
- CNN: [14 states set virus hospitalization records](#) - 10-20-20
- Fox News: [Human coronaviruses 'inactivated' by mouthwash, oral rinses: study](#) - 10-20-20
- Cidrap: [Experts: Don't count on mild flu season amid COVID-19](#) - 10-20-20

Upcoming and Continuing JIC Priorities

- Continue with [mask messaging and information](#).
- Communicate about [Phase 2 and Safe Start](#).
- Communicate about flu vaccines.
- Communicate about upcoming holidays.
- Help set expectations for progression of phased reopening.
- Continue to prioritize messaging based on current Incident Objectives.
- Work to distribute communication materials for community groups.
- Increase messaging for Spanish-speakers.
- Increase messaging for young adults including via social marketing.
- Communicate about testing access.
- Increase outreach to faith-based communities.
- Support WUC partnership work, including Border Task Force, small city Mayors' meetings, etc.

WHATCOM UNIFIED COMMAND INFORMATION

INCIDENT OBJECTIVES: Operational Period 23

1. Anticipate and develop plans to address additional waves of COVID-19 infections.
2. Prevent and mitigate the spread of COVID-19.
3. Provide for the most vulnerable members of the community.
4. Ensure adequacy of First Responder/Healthcare personnel and equipment/supplies.
5. Support maintenance of Phase 2 status for Whatcom County.
6. Keep the public, stakeholders, and the media informed of response activities.
7. Manage a coordinated interagency response and recovery effort.

SOURCES & RELEVANT SITES

IAP Software
WADOH Daily Epi Report
WADOH Map: <https://www.arcgis.com/apps/opsdashboard/index.html#/3614241b1c2b4e519ae1cf52e2c3d560>
Whatcom County Health Department <http://www.whatcomcounty.us/3329/Novel-Coronavirus-COVID-19#case>
Whatcom County EMS
Washington State Hospital Association- Hospital Supply Tracker
Whatcom County Health Department Situation Reports
Washington: <https://www.doh.wa.gov/emergencies/coronavirus>
British Columbia: <https://www.canada.ca/en/public-health/services/diseases/2019-novel-coronavirus-infection.html>
Alaska: <http://dhss.alaska.gov/dph/Epi/id/Pages/COVID-19/monitoring.aspx>
California: <https://www.cdph.ca.gov/Programs/CID/DCDC/Pages/Immunization/ncov2019.aspx>
Hawaii: <https://hawaiiicovid19.com/>

Idaho: <https://coronavirus.idaho.gov/>

Oregon: <https://govstatus.egov.com/OR-OHA-COVID-19>

CDC <https://www.cdc.gov/coronavirus/2019-ncov/cases-updates/cases-in-us.html>

Global: <https://coronavirus.jhu.edu/map.html>

SECTION UPDATES

LOGISTICS

1. Provide support and supplies to Byron Avenue I/Q facility utilizing an inventory and monitoring system to streamline ordering of consumable supplies.
2. Continue to update sourcing options for PPE and provide an accurate vendor supply list directly to customers, when needed.
3. Continue to interact with the State for meeting PPE requirements.
4. Support volunteer staffing for ongoing, weekly food distribution efforts.
5. Provide resources, support, and volunteer staffing needed for the Whatcom County low barrier COVID-19 mobile testing program.
6. Research possible facilities, sites, and vehicles to be utilized for outdoor WUC operations during inclement weather.
7. Submitted PPE requests for each school district in Whatcom County to the State Emergency Operations Center (EOC) and awaiting response.
8. Prepare updated, weather-proof signs and acquire sturdy barriers to be utilized at the Whatcom County low barrier COVID-19 mobile testing program.
9. Prepare fresh PPE totes for the weekly COVID-19 mobile testing program.

OPERATIONS

1. Support Tuesday's scheduled food stocking efforts and provide traffic control support during food distribution operations.
2. Continue operations of the Byron Avenue I/Q facility with the admittance of community members needing isolation/quarantine. Cumulatively, the I/Q facility has provided a total of 811 bed days of service for 104 community members.
3. Refine the operations plan for Whatcom County's low barrier COVID-19 mobile testing program.
4. Implementing the Whatcom County mobile COVID-19 testing program.
5. Identify and implement modifications of the Byron Ave I/Q facility services to increase efficiency and security measures.

PLANNING

1. Continue to coordinate with local and regional healthcare agencies for planning for COVID-19 medical surge and medical isolation/quarantine facilities.
2. Review and edit the status report template to be utilized for data updates in the medical surge plan.
3. Assist food security community partner agencies in transitioning their food distribution programs to self-supported, sustainable operations.
4. Submit edits to the operations plan for Whatcom County's low barrier COVID-19 mobile testing program.
5. Develop inclement weather plans for all outdoor WUC operations and work in tandem with the Joint Information Center on an appropriate communications plan for inclement weather updates.
6. Updating and refining the WUC meeting schedule to reflect the expanded meetings of the merged WUC organization.
7. Coordinating combined strategic planning efforts of the merged WUC organization.

REPORT PREPARED BY:

Situation Unit

REPORT APPROVED BY:

Incident Command

DATE:

10/20/20

TIME:

16:00