

# WHATCOM UNIFIED SITUATION REPORT



REPORT #: 20201026.1	DATE: 10/26/2020	TIME: 16:00
INCIDENT NAME: COVID-2019	OPERATIONAL PERIOD: 23	MISSION NUMBER: 20-0265

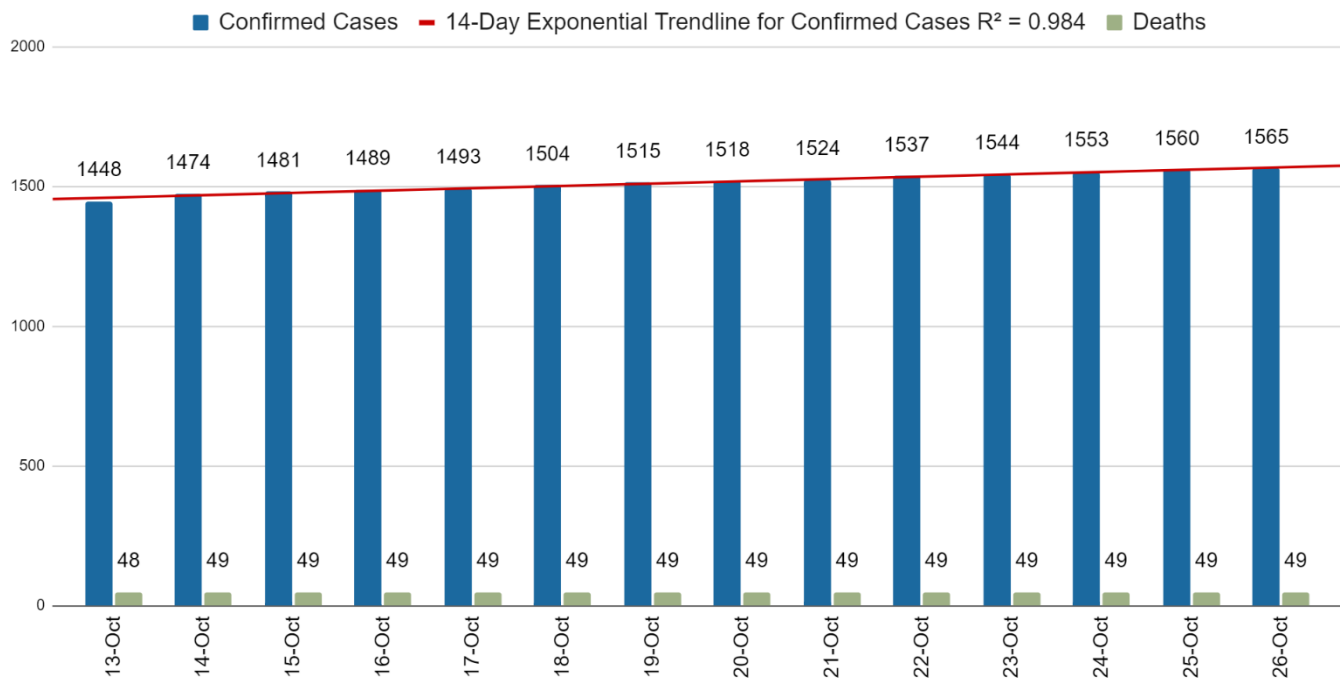
## WHATCOM UNIFIED INCIDENT COMMAND STATUS

ACTIVATION: Whatcom Unified Emergency Command Center	ACTIVATION STATUS: Partial	HOURS OF OPERATION: 8:00 am – 4:30 pm
---	-------------------------------	--

## GENERAL SITUATION

ICS 202

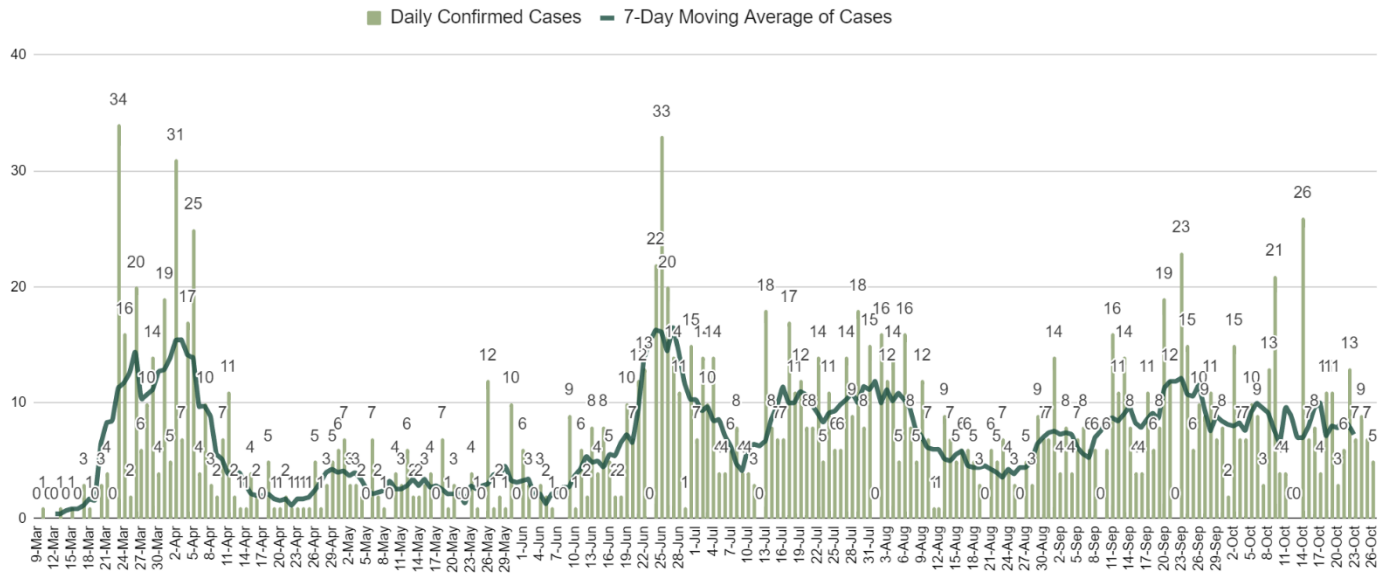
### 14-Day COVID-19 Confirmed Total Cases and Deaths, Whatcom County



DATE	CONFIRMED CASES	DEATHS
10/26/2020*	1565	49
10/25/2020*	1560	49
10/24/2020	1553	49
10/23/2020	1544	49
10/22/2020	1537	49

\*Data provided by the Whatcom County Health Dept is considered preliminary. As they verify cases, we can expect delays and fluctuations in data reported. Data was last updated 10/24/2020.

### COVID-19 Daily Confirmed Cases with 7-Day Moving Average, Whatcom County

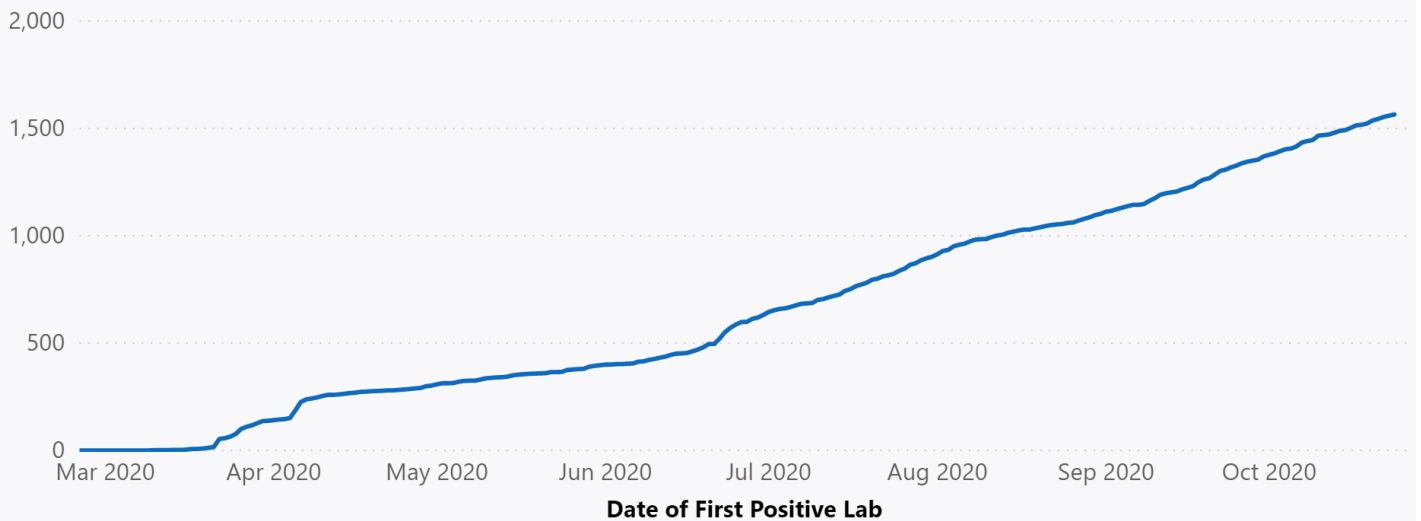


### COVID-19 in Whatcom County

#### Cumulative Cases, Hospitalizations and Deaths

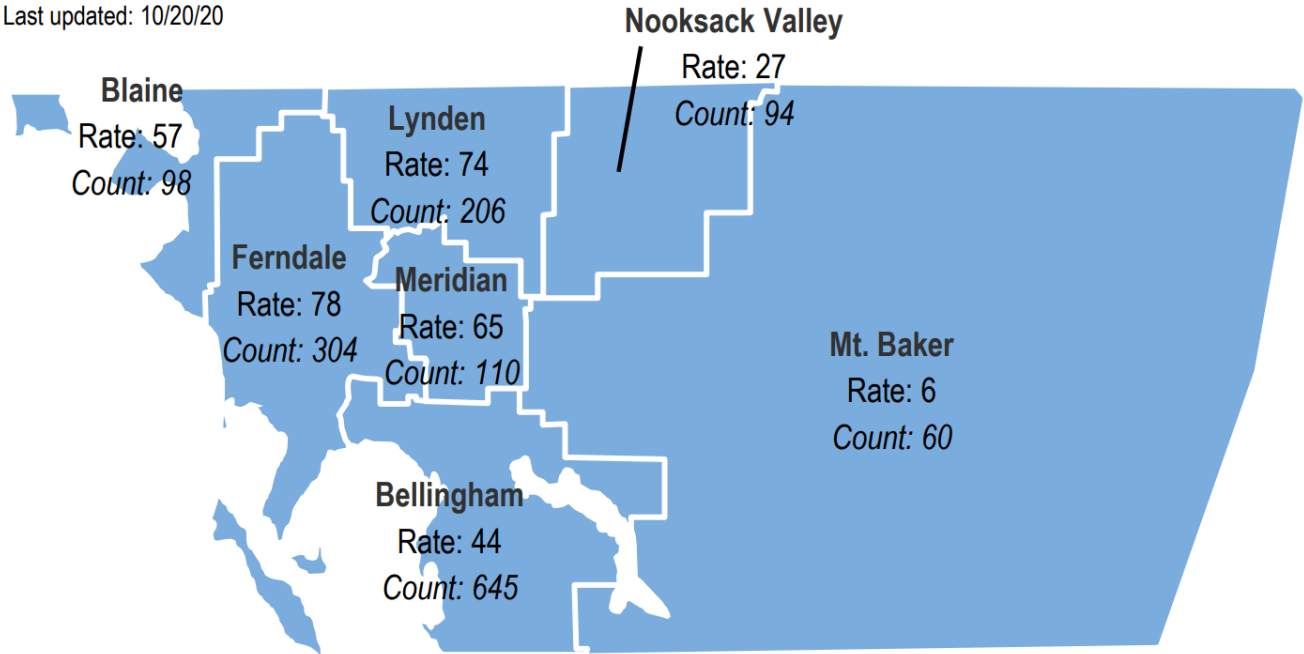
This chart includes the total number of people who have tested positive for COVID-19 since January 21, 2020. The chart begins on February 28, which is when community transmission was first reported in Washington State.

#### Cumulative Case Counts



# COVID-19 in Whatcom County, by School District Recent Two Week Case Rates & Cumulative Counts

Last updated: 10/20/20



**Rate:** Number of confirmed cases per 100,000 people for the past two weeks (10/4-10/17/20) \*See [Data Explainer](#) for info

**State Goal:** Fewer than 25 cases per 100,000 people during the prior two weeks

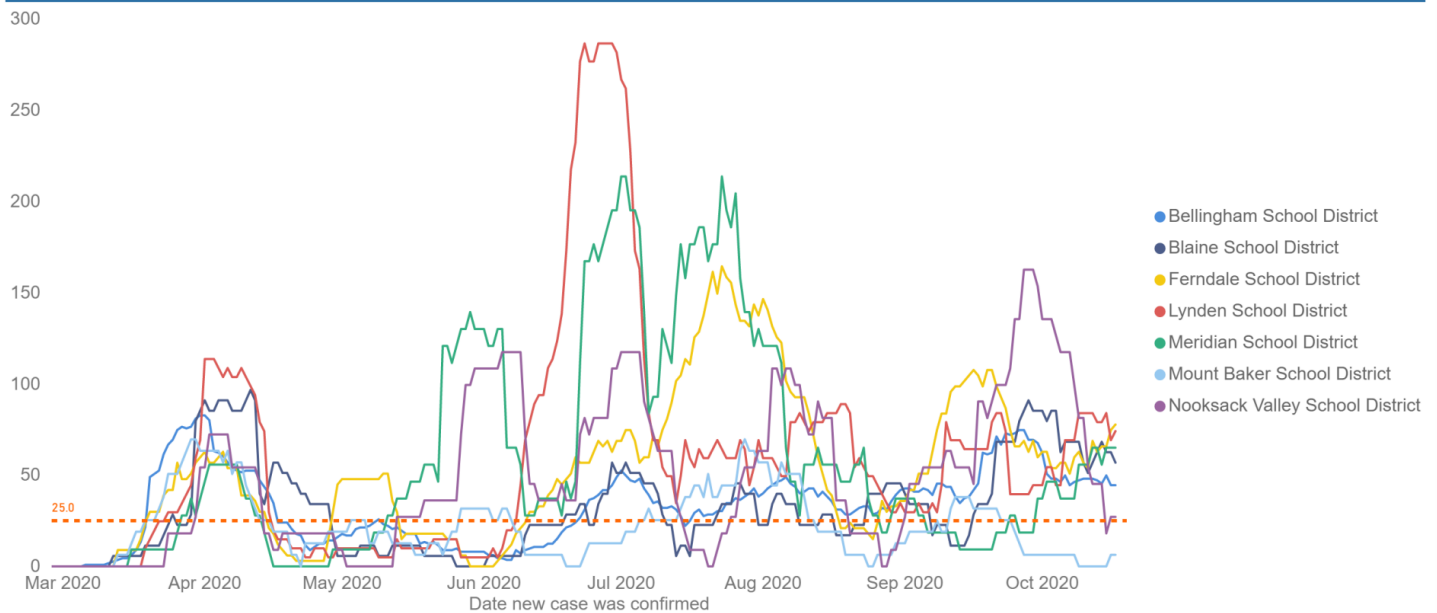
**Count:** Cumulative cases of COVID-19

## Newly diagnosed cases per 100,000 people during the prior two weeks, by Whatcom County School District Geography

\*see [Data Explainer](#) or [FAQs](#)

Data updated through 10/17/2020

Goal: Fewer than 25 cases per 100,000 people during the prior two weeks



County	Cases	Hospitalizations	Deaths
<input checked="" type="checkbox"/> Whatcom County			
Age 20-39	560	13	0
Age 40-59	353	33	1
Age 0-19	277	1	0
Age 60-79	215	35	8
Age 80+	110	22	40
Unknown Age	0	0	0

\*Source: Whatcom County Health Department: <https://www.whatcomcounty.us/3329/Novel-Coronavirus-COVID-19>

## INTELLIGENCE REPORT

### Data for PeaceHealth St. Joseph Medical Center

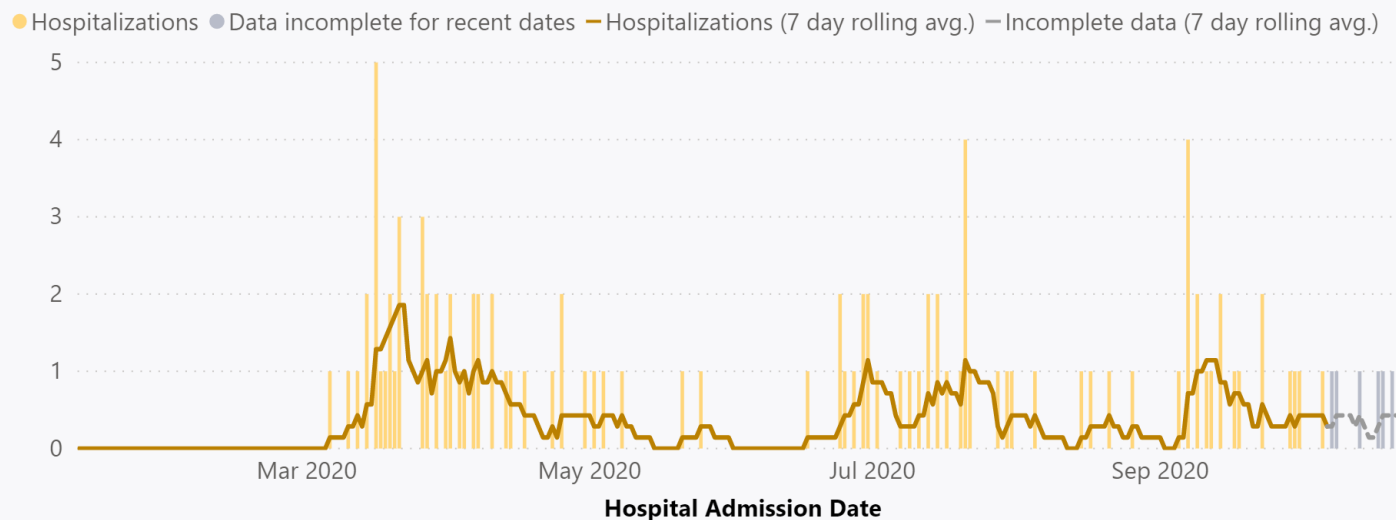
#### Updated as of 10/26/2020:

- 2 confirmed positive COVID-19 patients
- 0 suspected COVID-19 patients
- 1 ventilator in use for a COVID-19 positive patient
- 39 ventilators available
- 42 surge/overflow beds available
- 0% surge/overflow beds occupied

\* The data reported is the most current information provided from PeaceHealth St. Joseph Medical Center. Information is updated as soon as it is available

### WHATCOM COUNTY HOSPITALIZATION COUNTS

#### Hospitalizations Counts

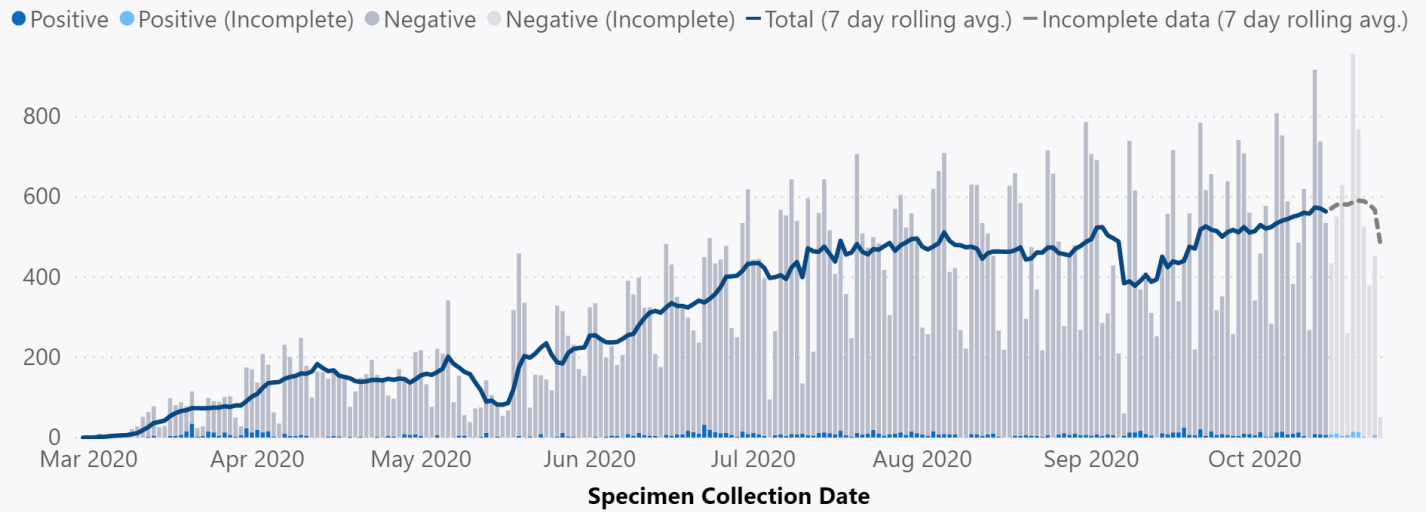


\*\*Source: Washington State Department of Health

<https://www.doh.wa.gov/Emergencies/NovelCoronavirusOutbreak2020COVID19/DataDashboard>

## WHATCOM COUNTY-NUMBER OF INDIVIDUALS TESTED

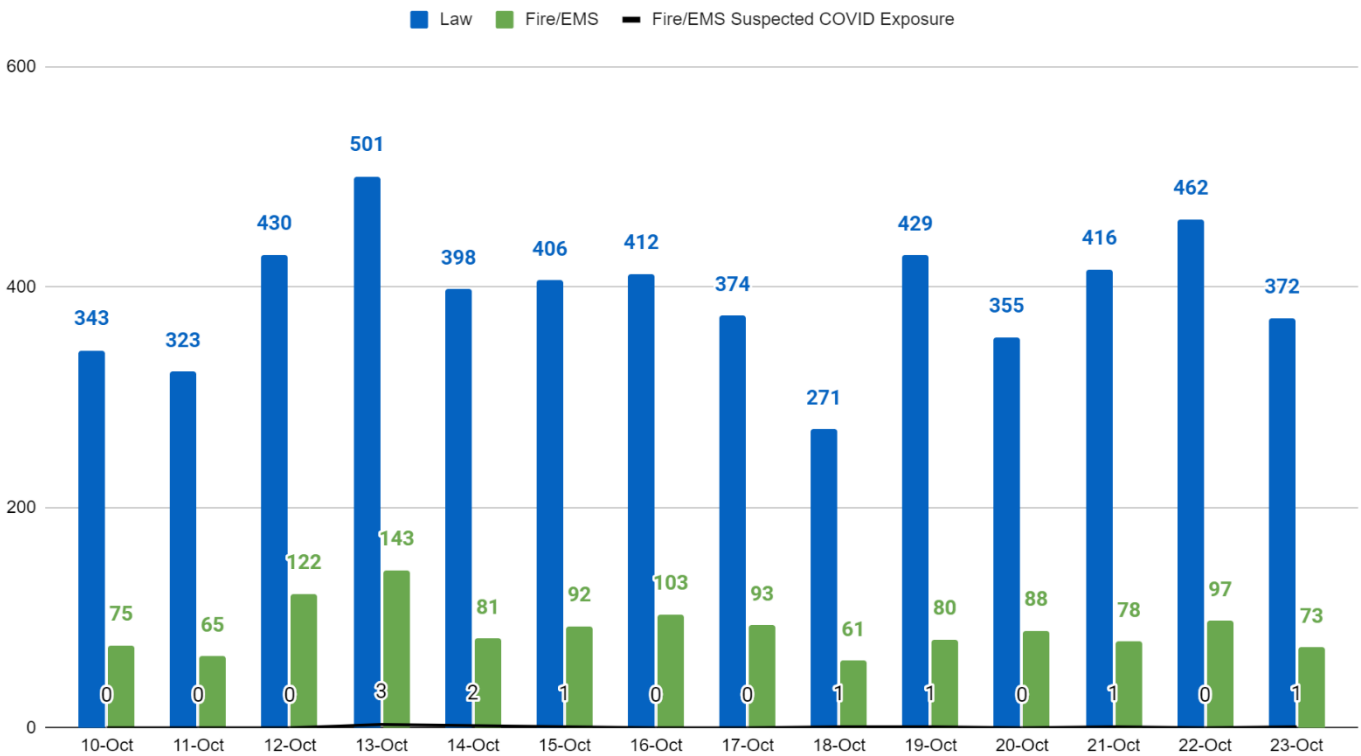
### Number of Tested



**\*\*Source: Washington State Department of Health2**

<https://www.doh.wa.gov/Emergencies/NovelCoronavirusOutbreak2020COVID19/DataDashboard>

## 14-Day 911 Calls for Law and Fire/EMS with Fire/EMS Suspected COVID Exposure, Whatcom County



**\*Note: A single incident can generate multiple 911 calls and incidents can occur without a 911 call.**

**\*\*Source: Whatcom County EMS**

## COMMUNICATIONS

**Incident Objective 6:** Keep the public, stakeholders, and the media informed of response activities

The Whatcom Unified Command **Joint Information Center (JIC)** updates and maintains the Whatcom COVID-19 website as the central repository for the most up to date information regarding COVID-19 for Whatcom County residents. Updates are continually made to report on current health data, government recommendations and orders, and media coverage. All information has been verified to come from reputable sources. The JIC coordinates with partner agencies throughout the State to maintain consistency when reporting information.

### Local Information (Coordinated through the JIC):

- WUC Whatcom COVID-19 website: <https://whatcomcovid.com/>
- Whatcom County Health Department website: <https://www.whatcomcounty.us/covid>
- Whatcom County News Flash: [www.co.whatcom.wa.us](http://www.co.whatcom.wa.us)
- [WUC Facebook](#)
- [WUC Twitter](#)
- [Whatcom County Health Department Facebook](#)

### State and Federal Information

- [Governor Inslee's Proclamations](#)
- [Washington State Department of Health provides guidance on wearing cloth face coverings](#)
- [Governor's phased approach](#)
- [Washington State face covering directive](#)
- [Washington State COVID-19 risk assessment dashboard](#)

### JIC Updates

- WCHD Website [www.whatcomcounty.us/covid](http://www.whatcomcounty.us/covid)
- Whatcom Unified Command website [www.whatcomcovid.com](http://www.whatcomcovid.com)
  - Responded to inquiries and posted daily Status Report
- Social Media Posts
  - WCHD
    - [Med take back day](#)
  - WUC
    - [Game Day Gatherings](#)

10-26-20

### Local and State

- Bellingham Herald: [Whatcom sees five new COVID-19 cases, state says Sunday](#) - 10-26-20
- All Point Bulletin: [International visitors to be offered rapid Covid-19 tests](#) - 10-22-20
- Seattle Times: [Coronavirus daily news updates, Oct. 26: What to know today about COVID-19](#) - 10-26-20
- Seattle Times: [UW's Dr. Vin Gupta, a reluctant star, shares coronavirus insights with the nation](#) - 10-26-20
- The Olympian: [Some in-person learning, some positive COVID-19 cases at local colleges](#) - 10-26-20
- Yakima Herald: [Dia de los Muertos in Tieton recognizes those lost to pandemic](#) - 10-24-20
- Spokesman Review: [Community Health Monitoring Program connects and comforts patients in the midst of COVID-19](#) - 10-26-20
- My Northwest: [COVID-19 updates: What exactly is a close contact?](#) - 10-26-20

### National

- NPR: [Colleges Turn To Wastewater Testing In An Effort To Flush Out The Coronavirus](#) - 10-26-20
- NPR: ['Incredibly Scary': Single Moms Fear Falling Through Holes In Pandemic Safety Net](#) - 10-26-20

- New York Times: [Colleges Slash Budgets in the Pandemic, With 'Nothing Off-Limits'](#) - 10-26-20
- AP News: [US health official says pandemic clearly can be controlled](#) - 10-26-20
- CNN: [The US had more daily Covid-19 cases in the past week than ever before. And no, it's not just due to more testing](#) - 10-26-20
- Route Fifty: [The Coronavirus Surge That Will Define the Next 4 Years](#) - 10-26-20
- The Conversation: [COVID-19 causes some patients' immune systems to attack their own bodies, which may contribute to severe illness](#) - 10-23-20
- The Conversation: [In rural America, resentment over COVID-19 shutdowns is colliding with rising case numbers](#) - 10-26-20

#### Upcoming and Continuing JIC Priorities

- Continue with [mask messaging and information](#).
- Communicate about [Phase 2 and Safe Start](#).
- Communicate about flu vaccines.
- Communicate about upcoming holidays.
- Help set expectations for progression of phased reopening.
- Continue to prioritize messaging based on current Incident Objectives.
- Work to distribute communication materials for community groups.
- Increase messaging for Spanish-speakers.
- Increase messaging for young adults including via social marketing.
- Communicate about testing access.
- Increase outreach to faith-based communities.
- Support WUC partnership work, including Border Task Force, small city Mayors' meetings, etc.

## WHATCOM UNIFIED COMMAND INFORMATION

#### INCIDENT OBJECTIVES: Operational Period 23

1. Anticipate and develop plans to address additional waves of COVID-19 infections.
2. Prevent and mitigate the spread of COVID-19.
3. Provide for the most vulnerable members of the community.
4. Ensure adequacy of First Responder/Healthcare personnel and equipment/supplies.
5. Support maintenance of Phase 2 status for Whatcom County.
6. Keep the public, stakeholders, and the media informed of response activities.
7. Manage a coordinated interagency response and recovery effort.

## SOURCES & RELEVANT SITES

IAP Software

WADOH Daily Epi Report

WADOH Map: <https://www.arcgis.com/apps/opsdashboard/index.html#/3614241b1c2b4e519ae1cf52e2c3d560>

Whatcom County Health Department <http://www.whatcomcounty.us/3329/Novel-Coronavirus-COVID-19#case>

Whatcom County EMS

Washington State Hospital Association- Hospital Supply Tracker

Whatcom County Health Department Situation Reports

Washington: <https://www.doh.wa.gov/emergencies/coronavirus>

British Columbia: <https://www.canada.ca/en/public-health/services/diseases/2019-novel-coronavirus-infection.html>

Alaska: <http://dhss.alaska.gov/dph/Epi/id/Pages/COVID-19/monitoring.aspx>

California: <https://www.cdph.ca.gov/Programs/CID/DCDC/Pages/Immunization/ncov2019.aspx>  
Hawaii: <https://hawaiicovid19.com/>  
Idaho: <https://coronavirus.idaho.gov/>  
Oregon: <https://govstatus.egov.com/OR-OHA-COVID-19>  
CDC <https://www.cdc.gov/coronavirus/2019-ncov/cases-updates/cases-in-us.html>  
Global: <https://coronavirus.jhu.edu/map.html>



## SECTION UPDATES

### LOGISTICS

1. Provide support and supplies to Byron Avenue I/Q facility utilizing an inventory and monitoring system to streamline ordering of consumable supplies.
2. Continue to update sourcing options for PPE and provide an accurate vendor supply list directly to customers, when needed.
3. Continue to interact with the State for meeting PPE requirements.
4. Support volunteer staffing for ongoing, weekly food distribution efforts.
5. Provide resources, support, and volunteer staffing needed for the Whatcom County low barrier COVID-19 mobile testing program.
6. Process PPE received from state Emergency Operations Center (EOC) in preparation for distribution to each Whatcom County school district.
7. Assist the Salvation Army staff with their transition to a new site location for their food distribution program.

### OPERATIONS

1. Support Monday's scheduled food stocking efforts.
2. Continue operations of the Byron Avenue I/Q facility for community members needing isolation/quarantine. Currently, 3 rooms are occupied. Cumulatively, the I/Q facility has provided a total of 829 bed days of service for 106 community members.
3. Refine the operations plan for Whatcom County's low barrier COVID-19 mobile testing program.
4. Implementing the Whatcom County mobile COVID-19 testing program.
5. Identify and implement modifications of the Byron Ave I/Q facility services to increase efficiency and security measures.

### PLANNING

1. Continue to coordinate with local and regional healthcare agencies for planning for COVID-19 medical surge and medical isolation/quarantine facilities.
2. Review and edit the status report template to be utilized for data updates in the medical surge plan.
3. Assist food security community partner agencies in transitioning their food distribution programs to self-supported, sustainable operations.
4. Submit edits to the operations plan for Whatcom County's low barrier COVID-19 mobile testing program.
5. Develop inclement weather plans for all outdoor WUC operations.
6. Updating and refining the WUC meeting schedule to reflect the expanded meetings of the merged WUC organization.
7. Coordinating combined strategic planning efforts and managing updates to the organizational chart of the merged WUC organization.

**REPORT PREPARED BY:**  
Situation Unit

**REPORT APPROVED BY:**  
Incident Command

**DATE:**  
10/26/20

**TIME:**  
16:00