

WHATCOM UNIFIED SITUATION REPORT



REPORT #: 20201105.1	DATE: 11/05/2020	TIME: 16:00
INCIDENT NAME: COVID-2019	OPERATIONAL PERIOD: 23	MISSION NUMBER: 20-0265

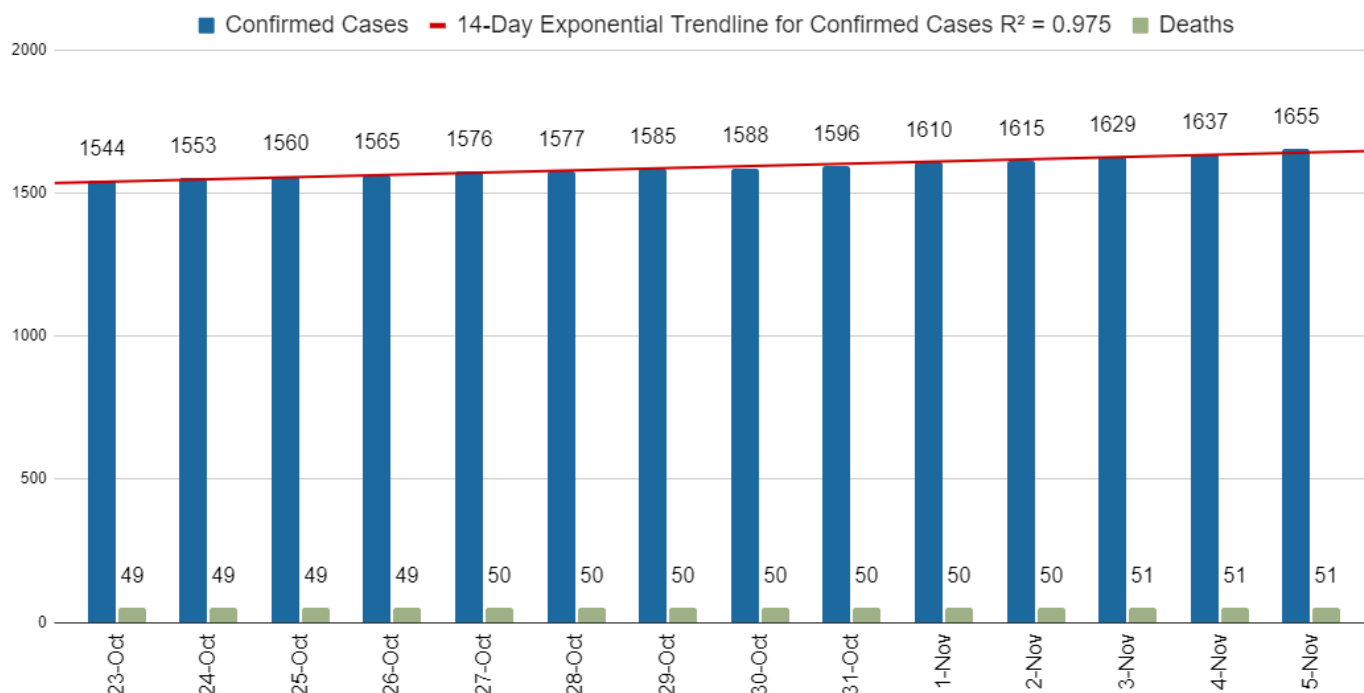
WHATCOM UNIFIED INCIDENT COMMAND STATUS

ACTIVATION: Whatcom Unified Emergency Command Center	ACTIVATION STATUS: Partial	HOURS OF OPERATION: 8:00 am – 4:30 pm
---	-------------------------------	--

GENERAL SITUATION

ICS 202

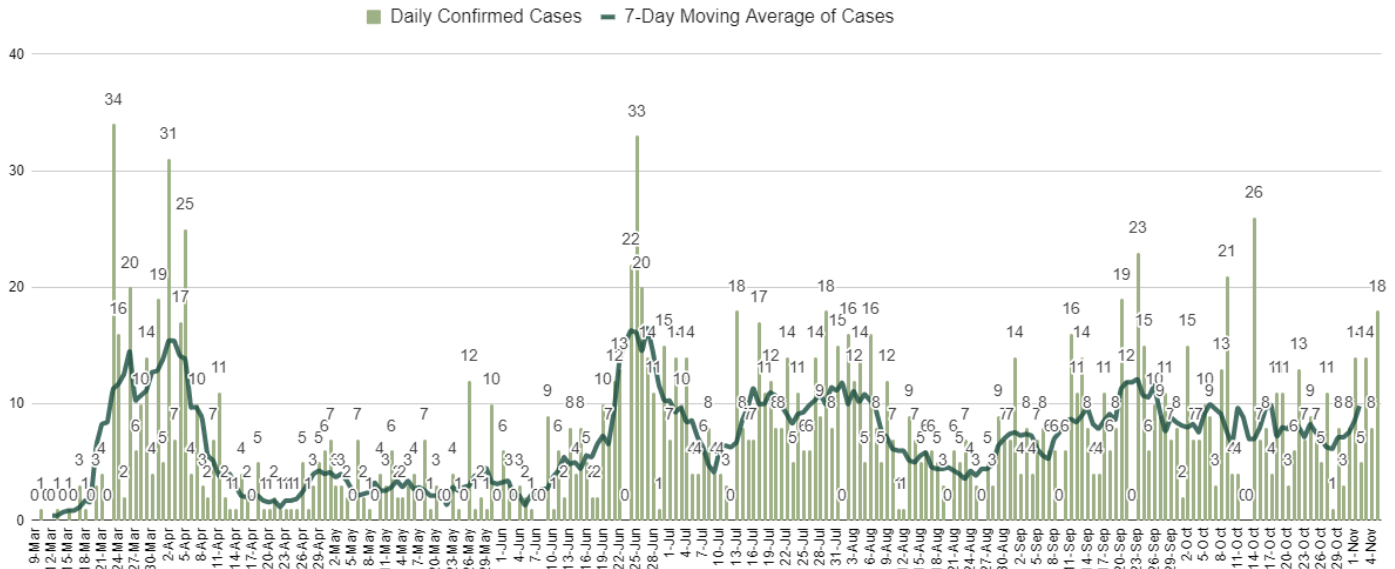
14-Day COVID-19 Confirmed Total Cases and Deaths, Whatcom County



DATE	CONFIRMED CASES	DEATHS
11/05/2020*	1655	51
11/04/2020*	1637	51
11/03/2020*	1629	51
11/02/2020	1615	50
11/01/2020	1610	50

*Data provided by the Whatcom County Health Dept is considered preliminary. As they verify cases, we can expect delays and fluctuations in data reported. Data was last updated 11/02/2020.

COVID-19 Daily Confirmed Cases with 7-Day Moving Average, Whatcom County



COVID-19 in Whatcom County

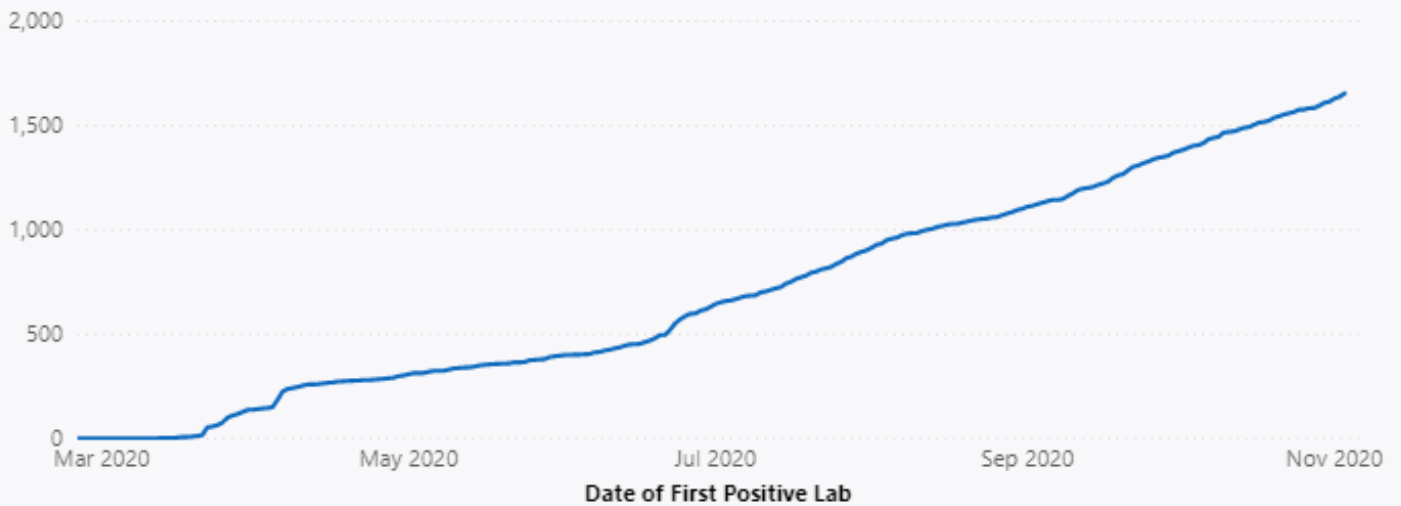
Cumulative Cases, Hospitalizations and Deaths

This chart includes the total number of people who have tested positive for COVID-19 since January 21, 2020. The chart begins on February 28, which is when community transmission was first reported in Washington State.

[Learn More](#)

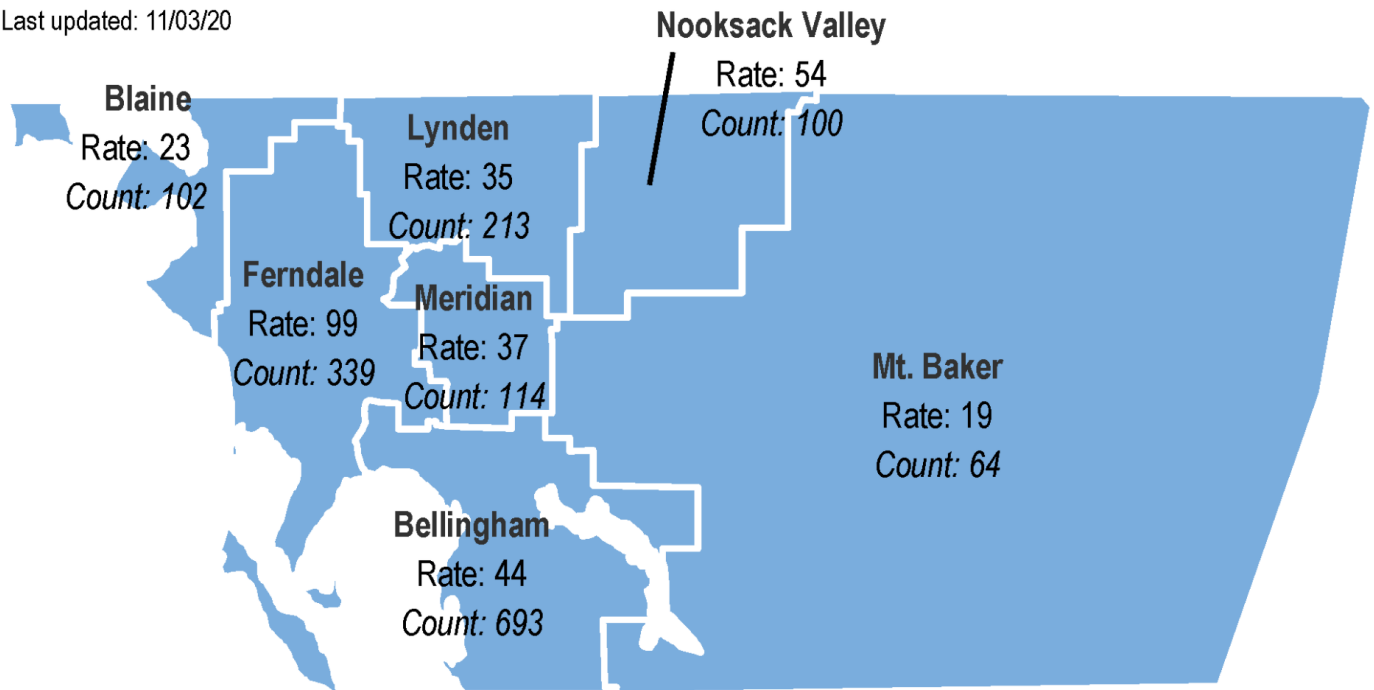


Cumulative Case Counts



COVID-19 in Whatcom County, by School District Recent Two Week Case Rates & Cumulative Counts

Last updated: 11/03/20



Rate: Number of confirmed cases per 100,000 people for the past two weeks (10/18-10/31/20) *See [Data Explorer](#) for info

State Goal: Fewer than 25 cases per 100,000 people during the prior two weeks

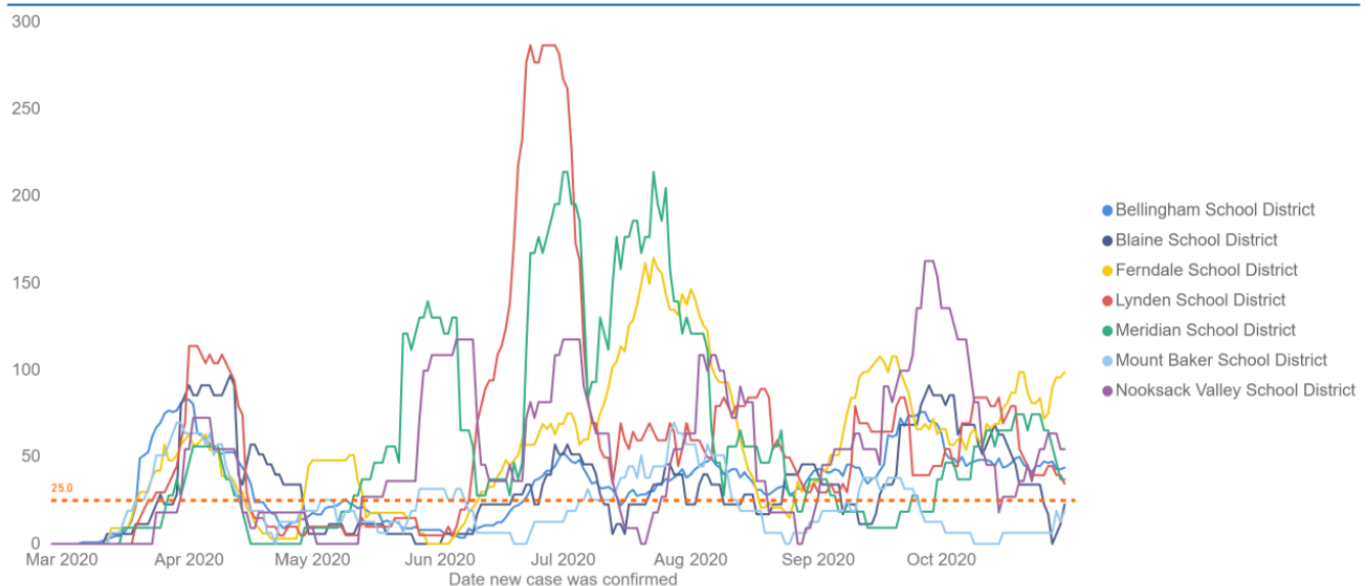
Count: Cumulative cases of COVID-19

Newly diagnosed cases per 100,000 people during the prior two weeks, by Whatcom County School District Geography

*see [Data Explorer](#) or [FAQs](#)

Data updated through 10/31/2020

Goal: Fewer than 25 cases per 100,000 people during the prior two weeks



County	Cases	Hospitalizations	Deaths
<input checked="" type="checkbox"/> Whatcom County			
Age 20-39	587	14	0
Age 40-59	383	33	1
Age 0-19	302	2	0
Age 60-79	232	38	8
Age 80+	111	22	41
Unknown Age	0	0	0

*Source: Whatcom County Health Department: <https://www.whatcomcounty.us/3329/Novel-Coronavirus-COVID-19>

INTELLIGENCE REPORT

Data for PeaceHealth St. Joseph Medical Center

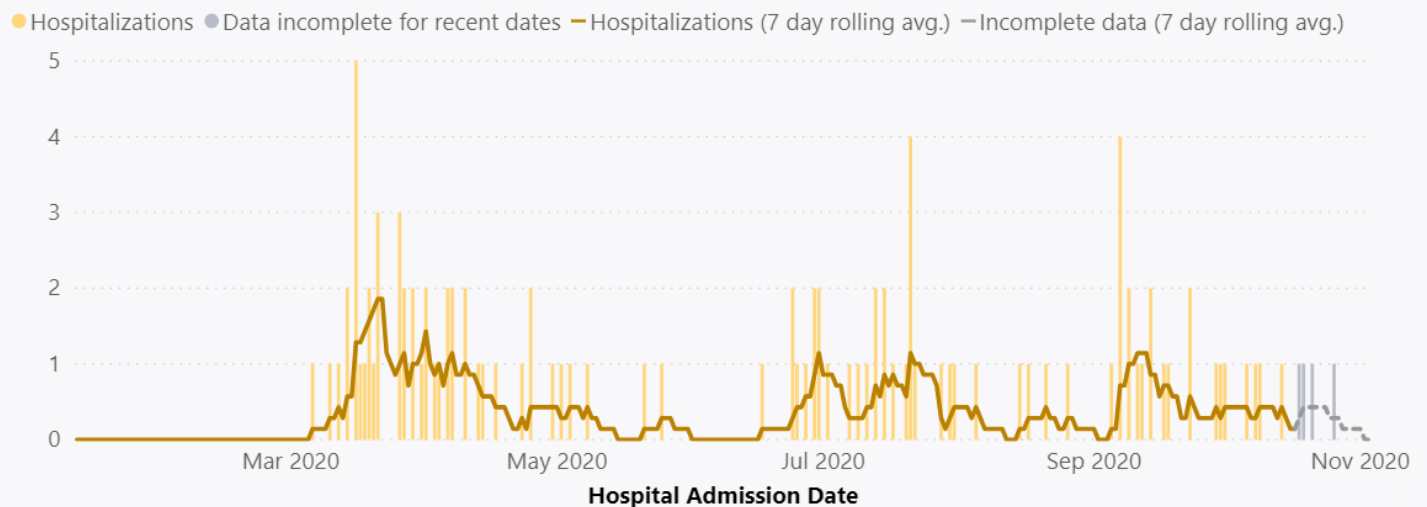
Updated as of 11/05/2020:

- 3 confirmed positive COVID-19 patients
- 0 suspected COVID-19 patients
- 0 ventilators in use for a COVID-19 positive patient
- 40 ventilators available
- 42 surge/overflow beds available
- 0% surge/overflow beds occupied

* The data reported is the most current information provided from PeaceHealth St. Joseph Medical Center. Information is updated as soon as it is available

WHATCOM COUNTY HOSPITALIZATION COUNTS

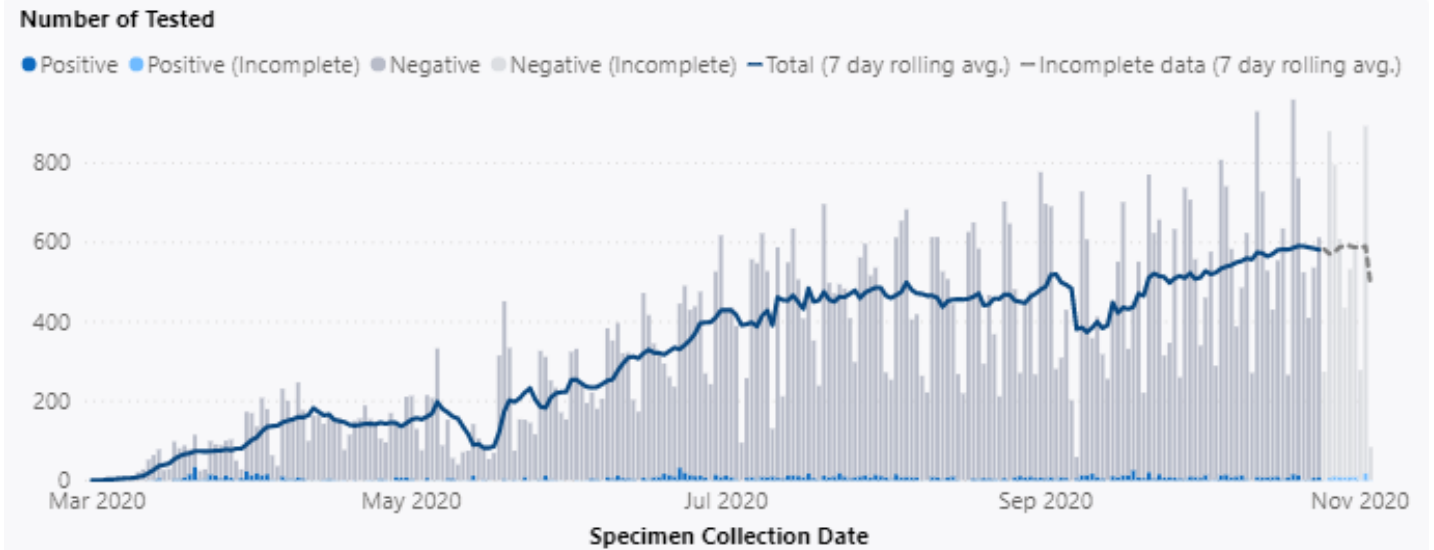
Hospitalizations Counts



**Source: Washington State Department of Health

<https://www.doh.wa.gov/Emergencies/NovelCoronavirusOutbreak2020COVID19/DataDashboard>

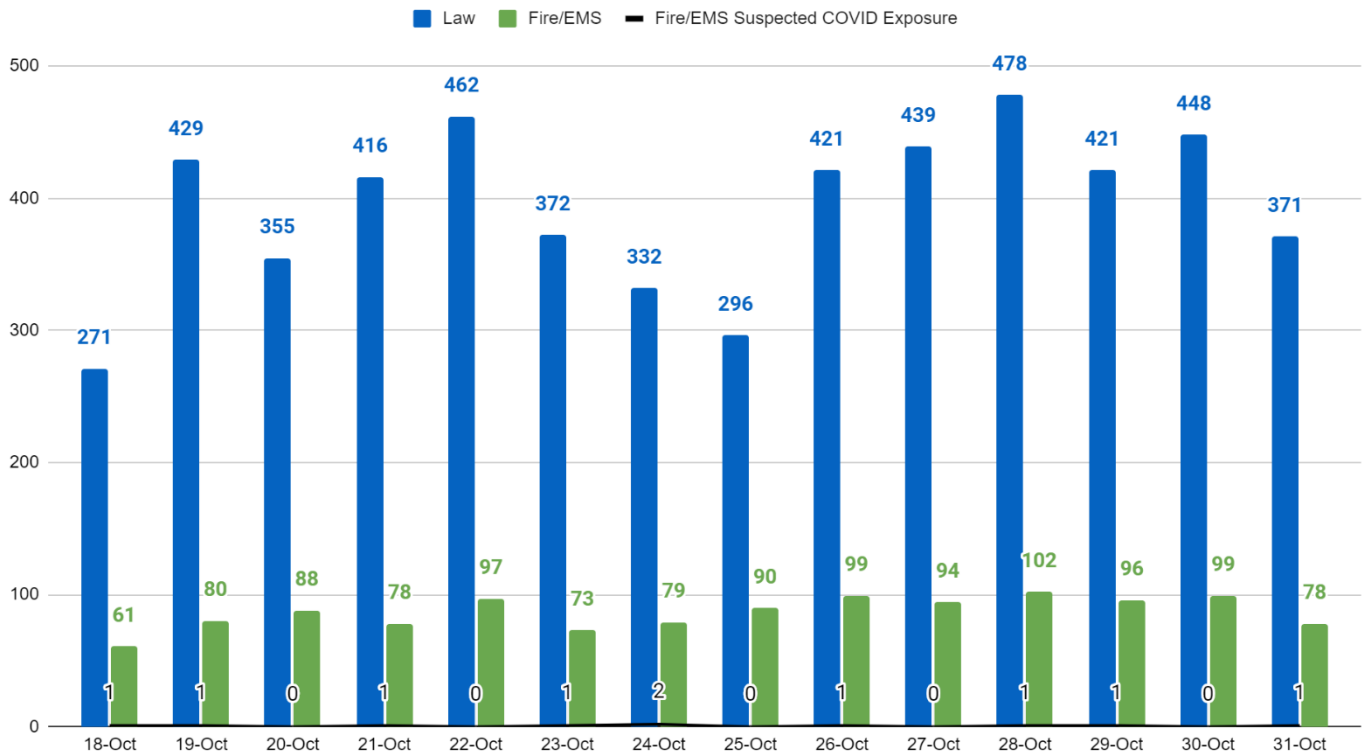
WHATCOM COUNTY-NUMBER OF INDIVIDUALS TESTED



***Source: Washington State Department of Health²*

<https://www.doh.wa.gov/Emergencies/NovelCoronavirusOutbreak2020COVID19/DataDashboard>

14-Day 911 Calls for Law and Fire/EMS with Fire/EMS Suspected COVID Exposure, Whatcom County



**Note: A single incident can generate multiple 911 calls and incidents can occur without a 911 call.*

***Source: Whatcom County EMS*

COMMUNICATIONS

Incident Objective 6: Keep the public, stakeholders, and the media informed of response activities

The Whatcom Unified Command **Joint Information Center (JIC)** updates and maintains the Whatcom COVID-19 website as the central repository for the most up to date information regarding COVID-19 for Whatcom County residents. Updates are continually made to report on current health data, government recommendations and orders, and media coverage. All information has been verified to come from reputable sources. The JIC coordinates with partner agencies throughout the State to maintain consistency when reporting information.

Local Information (Coordinated through the JIC):

- WUC Whatcom COVID-19 website: <https://whatcomcovid.com/>
- Whatcom County Health Department website: <https://www.whatcomcounty.us/covid>
- Whatcom County News Flash: www.co.whatcom.wa.us
- [WUC Facebook](#)
- [WUC Twitter](#)
- [Whatcom County Health Department Facebook](#)

State and Federal Information

- [Governor Inslee's Proclamations](#)
- [Washington State Department of Health provides guidance on wearing cloth face coverings](#)
- [Governor's phased approach](#)
- [Washington State face covering directive](#)
- [Washington State COVID-19 risk assessment dashboard](#)

JIC Updates

- WCHD Website (www.whatcomcounty.us/covid)
- Whatcom Unified Command website (www.whatcomcovid.com)
 - Responded to inquiries and posted daily Status Report
- Social Media Posts
 - WCHD & WUC
 - [Ground rules for safe gatherings](#)

Local and State

- Bellingham Herald: [Whatcom sees biggest jump in nearly a month with 18 new COVID-19 cases Wednesday](#) - 11-4-20
- KGMI: [Whatcom County reports one-day surge in new COVID-19 cases](#) - 11-5-20
- Seattle Times: [Washington sets record for daily coronavirus cases](#) - 11-4-20
- Spokesman Review: [School COVID-19 numbers a mixed bag as Spokane district prepares for more in-person learning](#) - 11-4-20

National

- CNN: [The US just reported 102,831 new Covid-19 infections in 1 day. That's an all-time high](#) - 11-5-20
- Fox: [Coronavirus surges across Midwest strain staffing, intensive care capacity](#) - 11-5-20
- AP: [Virus hospitalizations surge as pandemic shadows US election](#) - 11-4-20

- Washington Post: Coronavirus updates: [Exit polls show pandemic not the top priority for many voters as hospitals sound alarm](#) - 11-4-20
- Miami Herald: [Many coronavirus patients may have only gastrointestinal symptoms, study says](#) - 11-4-20
- Washington Post: [When coffee smells like gasoline: Covid isn't just stealing senses — it may be warping them](#) - 11-4-20
- NY Times: [COVID Is the Big Story on Campus. College Reporters Have the Scoop.](#) - 11-4-20

Upcoming and Continuing JIC Priorities

- Continue with [mask messaging and information](#)
- Communicate about [Phase 2 and Safe Start](#)
- Communicate about flu vaccines
- Communicate about upcoming holidays
- Help set expectations for progression of phased reopening
- Continue to prioritize messaging based on current Incident Objectives
- Work to distribute communication materials for community groups
- Increase messaging for Spanish-speakers
- Increase messaging for young adults including via social marketing
- Increase outreach to farming and farmworker communities
- Communicate about testing access
- Increase outreach to faith-based communities
- Support WUC partnership work, including Border Task Force, small cities Mayor's meetings, etc.

WHATCOM UNIFIED COMMAND INFORMATION

INCIDENT OBJECTIVES: Operational Period 23

1. Anticipate and develop plans to address additional waves of COVID-19 infections.
2. Prevent and mitigate the spread of COVID-19.
3. Provide for the most vulnerable members of the community.
4. Ensure adequacy of First Responder/Healthcare personnel and equipment/supplies.
5. Support maintenance of Phase 2 status for Whatcom County.
6. Keep the public, stakeholders, and the media informed of response activities.
7. Manage a coordinated interagency response and recovery effort.

SOURCES & RELEVANT SITES

IAP Software
WADOH Daily Epi Report
WADOH Map: <https://www.arcgis.com/apps/opsdashboard/index.html#/3614241b1c2b4e519ae1cf52e2c3d560>
Whatcom County Health Department <http://www.whatcomcounty.us/3329/Novel-Coronavirus-COVID-19#case>
Whatcom County EMS
Washington State Hospital Association- Hospital Supply Tracker
Whatcom County Health Department Situation Reports
Washington: <https://www.doh.wa.gov/emergencies/coronavirus>
British Columbia: <https://www.canada.ca/en/public-health/services/diseases/2019-novel-coronavirus-infection.html>

Alaska: <http://dhss.alaska.gov/dph/Epi/id/Pages/COVID-19/monitoring.aspx>
California: <https://www.cdph.ca.gov/Programs/CID/DCDC/Pages/Immunization/ncov2019.aspx>
Hawaii: <https://hawaiiicovid19.com/>
Idaho: <https://coronavirus.idaho.gov/>
Oregon: <https://govstatus.egov.com/OR-OHA-COVID-19>
CDC <https://www.cdc.gov/coronavirus/2019-ncov/cases-updates/cases-in-us.html>
Global: <https://coronavirus.jhu.edu/map.html>

SECTION UPDATES

LOGISTICS

1. Supporting volunteer staffing for ongoing, weekly food distribution efforts.
2. Providing resources, support, and volunteer staffing needed for the community low barrier COVID-19 mobile testing program.
3. Processing resource requests for consumable supplies for the Byron Avenue I/Q facility.
4. Processing resource requests for modification of the Byron Ave I/Q facility fencing and security.
5. Researching short-term and long-term options for an inclement weather COVID testing site at Bellingham International Airport Parking Lot B.

OPERATIONS

1. Supporting Thursday's scheduled food distribution operations.
2. Continuing operations of the Byron Avenue I/Q facility for community members needing isolation/quarantine. Cumulatively, the I/Q facility has provided a total of 843 bed days of service for 106 community members.
3. Refining the operations plan for the community low barrier COVID-19 mobile testing program.
4. Continuing to implement the community mobile COVID-19 testing program.
5. Identifying and implementing modifications of Byron Ave I/Q facility services to increase efficiency and security measures.
6. Continuing daily operations supported by the communicable disease divisions at WCHD for case identification, interviewing, contact tracing, community mitigation, and isolation and quarantine work.

PLANNING

1. Continuing to coordinate with local and regional healthcare agencies for planning for COVID-19 medical surge and medical isolation/quarantine facilities.
2. Reviewing and editing the status report template to be utilized for data updates in the medical surge plan.
3. Assisting food security community partner agencies in transitioning their food distribution programs to self-supported, sustainable operations.
4. Implementing inclement weather plans for all outdoor WUC operations.
5. Coordinating combined strategic planning efforts and managing updates to the organizational chart of the merged WUC organization.
6. Preparing the Incident Action Plan for the next operational period.

REPORT PREPARED BY:

Situation Unit

REPORT APPROVED BY:

Incident Command

DATE:

11/05/20

TIME:

16:00