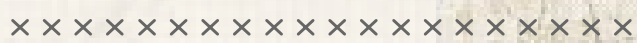




UPSTAGE



FREE PATTERN



UPSTAGE

QUILT DESIGNED BY BLAIR STOCKER

wise craft
handmade by Blair Stoker

Virtuosa
FABRICS DESIGNED BY barij



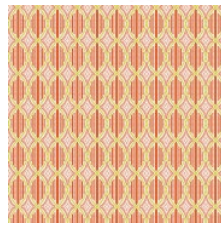
INTENSE DRAMATIST



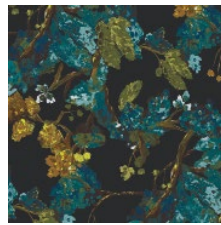
VRI-21800
PRIMA FLORA CALMA



VRI-21804
EPISODIC BLOOMS AQUA



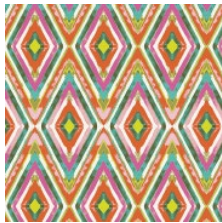
VRI-21801
OVERTURE FIAMMA



VRI-21809
CINESE MYSTERY



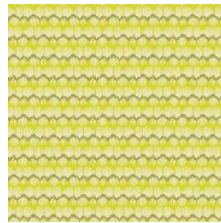
VRI-21803
CHORUS MIRROR TERRA



VRI-21805
THEATRE RESONANCE IRIS



VRI-21807
CADENCE WINDS TANG



VRI-21806
HARMONIOUS ACT CITRUS



VRI-21802
FLOWERDRAMA MATTINA



VRI-21808
PLOT'S FIORI CLASSICO

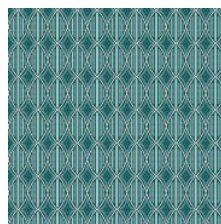
LAMBERT PLAYWRIGHT



VRI-11800
PRIMA FLORA AMORE



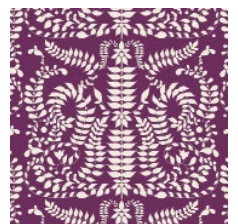
VRI-11804
EPISODIC BLOOMS ROSA



VRI-11801
OVERTURE SERENITA



VRI-11809
CINESE ROMANCE



VRI-11803
CHORUS MIRROR VIOLA



VRI-11805
THEATRE RESONANCE PLUM



VRI-11807
CADENCE WINDS OLIVA



VRI-11806
HARMONIOUS ACT DOLCE



VRI-11802
FLOWERDRAMA NOTTE



VRI-11808
PLOT'S FIORI FRESCO



UPSTAGE

FINISHED SIZE | 34" x 51"

FABRIC REQUIREMENTS

Fabric A	VRT-11809	$\frac{3}{8}$ yd.
Fabric B	VRT-11800	$\frac{3}{8}$ yd.
Fabric C	VRT-11802	$\frac{1}{4}$ yd.
Fabric D	VRT-11806	$\frac{5}{8}$ yd.
Fabric E	VRT-11804	$\frac{7}{8}$ yd.
Fabric F	VRT-11807	$\frac{1}{4}$ yd.
Fabric G	VRT-11808	$\frac{3}{8}$ yd.

BACKING FABRIC

VRT-11802 1 $\frac{3}{4}$ yds. *(suggested)*

BINDING FABRIC

VRT-11806 (Fabric D) *(included)*

CUTTING DIRECTIONS

$\frac{1}{4}$ " seam allowances are included.
WOF means width of fabric.

Fabric A:

One 8 $\frac{1}{2}$ " x WOF strip
Subcut into three (3) 8 $\frac{1}{2}$ " squares

Fabric B:

Two 4 $\frac{1}{2}$ " x WOF strips
Subcut into sixteen (16) 4 $\frac{1}{2}$ " squares

Fabric C:

Cut five of Border Triangle Template
Subcut each square diagonally in both directions to create twenty (20) triangles total

Fabric D:

Three 2 $\frac{1}{2}$ " x WOF strips
Subcut into six (6) 8 $\frac{1}{2}$ " lengths and six (6) 12 $\frac{1}{2}$ " lengths
One 1 $\frac{1}{2}$ " x WOF strip
Subcut into four (4) 4 $\frac{1}{2}$ " lengths and four (4) 6 $\frac{1}{2}$ " lengths

Fabric E:

Seventeen 1 $\frac{1}{2}$ " x WOF strip
Subcut into thirty-two (32) 4 $\frac{1}{2}$ " lengths, thirty-two (32) 6 $\frac{1}{2}$ " lengths, and forty (40) 8 $\frac{1}{2}$ " lengths (for triangle borders)

Fabric F:

One 4 $\frac{1}{2}$ " x WOF strip
Subcut into ten (10) 4 $\frac{1}{2}$ " squares

Fabric G:

Five 1 $\frac{1}{2}$ " x WOF strips
Subcut into sixteen (16) 4 $\frac{1}{2}$ " lengths and sixteen (16) 6 $\frac{1}{2}$ " lengths

BLOCK CONSTRUCTION

Sew all rights sides together with $\frac{1}{4}$ " seam allowance.

© Construct large center squares:

- © On each of the three Fabric A 8 $\frac{1}{2}$ " squares, add a 2 $\frac{1}{2}$ " x 8 $\frac{1}{2}$ " Fabric D strip to two opposite sides as shown, press seam allowances toward strip.
- © Next, add a 2 $\frac{1}{2}$ " x 12 $\frac{1}{2}$ " Fabric D strip to the two remaining sides, press seam allowances toward strip. Check that blocks are 12 $\frac{1}{2}$ " square, trim to square up if needed.

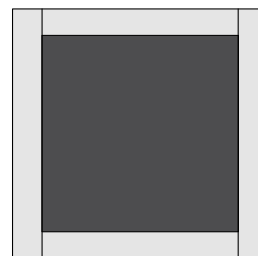


DIAGRAM 1

© Construct small bordered squares:

- © Following the same construction in Step 2, construct the rest of the smaller, bordered squares.
- © To sixteen 4 $\frac{1}{2}$ " squares of Fabric B, add a 1 $\frac{1}{2}$ " x 4 $\frac{1}{2}$ " strip of Fabric E to top and bottom of the block, press seam allowances toward strip. Add a 1 $\frac{1}{2}$ " x 6 $\frac{1}{2}$ " strip of Fabric E to the two remaining sides, press seam allowance toward strips.
- © To eight 4 $\frac{1}{2}$ " squares of Fabric F, add a 1 $\frac{1}{2}$ " x 4 $\frac{1}{2}$ " strip of Fabric G to top and bottom of the block, press seam allowances toward strip. Add a 1 $\frac{1}{2}$ " x 6 $\frac{1}{2}$ " strip of Fabric G to the two remaining sides, press seam allowance toward strips.

ASSEMBLING THE TOP

Sew all rights sides together with 1/4" seam allowance. Press open.

Using the assembly diagram the next page lay out the entire quilt top. The quilt is an on point layout, therefore rows are on the diagonal.

*(*Note that rows with an asterisk, which are sewn to the large, on point center squares, should be sewn together first, then sewn to the center squares.)*

Blocks are identified by the center fabric square/ triangle:

Row 1: C > C

Row 2: C > B > B > C

*Row 3 left: C > B > B

*Row 4 left: C > F > F > F

*Row 3 Right: C

*Row 4 Right: B > C

*Row 5 left: C > B > F

*Row 6 left: C > B > B > C

*Row 5 right: F > B > B > C

*Row 6 right: F > B > C

*Row 7 left: C > B

*Row 8 left: C

*Row 7 right: F > F > F > C

*Row 8 right: B > B > C

Row 9: C > B > B > C

Row 10: C > C

Double-check your orientation with the assembly diagram and the cover illustration before sewing.

Sew together and press seam allowances to one consistent side.

© To two 4 1/2" squares of Fabric F, add a 1 1/2" x 4 1/2" strip of Fabric D to top and bottom of the block, press seam allowances toward strip. Add a 1 1/2" x 6 1/2" strip of Fabric D to the two remaining sides, press seam allowance toward strips.

© Check that all squares are 6 1/2", trim to square up if needed.

©

© **Construct border triangles:**

© (Note- Border triangles can be tricky, but not hard. The technique in this pattern creates a little waste, but results in better accuracy.)

© In the cutting instructions you created triangles by making 2 diagonal cuts across template squares. Doing this puts the straight of grain side of the triangle on the outer edge of the quilt- exactly what you want. Otherwise, you get unwanted bias stretch.

© Add Fabric E border strips to the two shorter sides of all of the the Fabric C border triangles as follows:

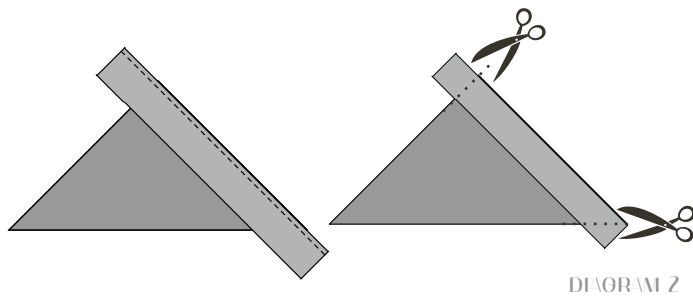


DIAGRAM 2

© Center a 8 1/2" strip to the left side of the triangle, stitch, and press seam allowance toward strip. Trim the strip to align with the triangle as shown below:

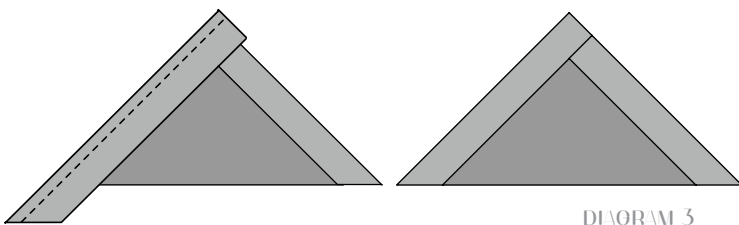


DIAGRAM 3

