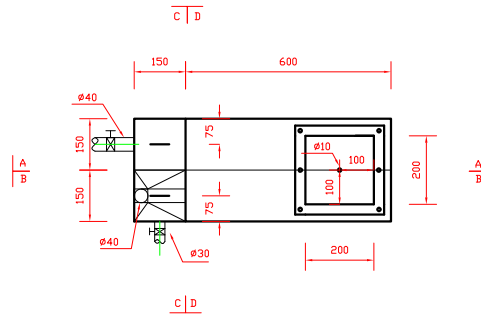
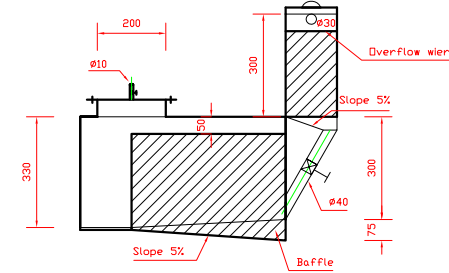


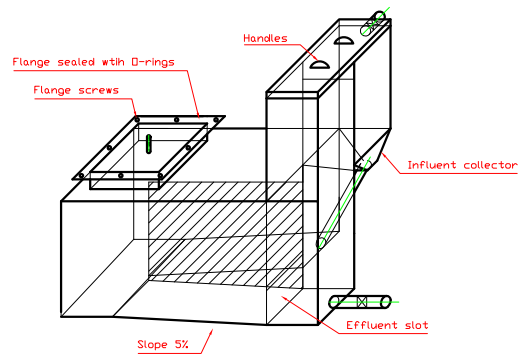
3D view



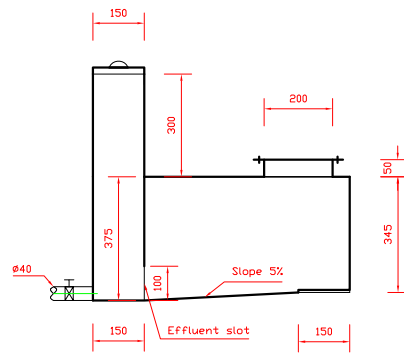
Top view



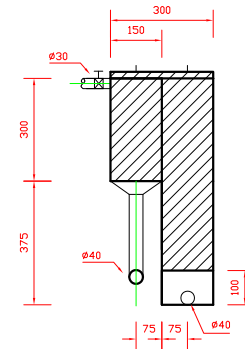
Section B-B



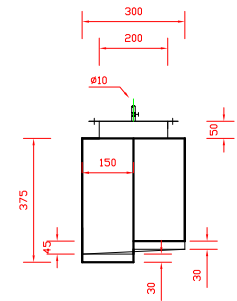
3D view



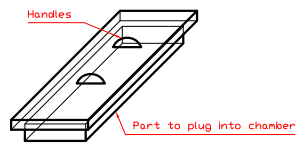
Section A-A



Section C-C

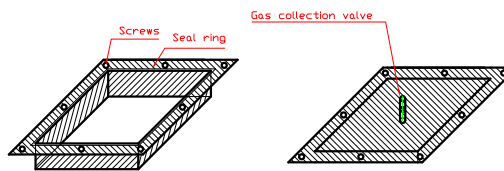


Section D-D



Illustrative design of cover for influent & effluent chamber

- Notes:
1. This cover should be able to be easily plugged into and unplugged from the chamber below it.
 2. This cover does not need to be airtight.



Illustrative design of inspection chamber Flange cover on inspection chamber

- Notes:
1. Cover is screwed to inspection chamber like a flange.
 2. Seal ring should be used to ensure this inspection chamber airtight.

- Notes:
1. All units in mm.
 2. Drawing is not to scale.
 3. This reactor should be made of transparent materials.
 4. The entire reactor should be airtight except the cover for influent & effluent chamber.
 5. The entire digester should be watertight.

Design for bench-scale household anaerobic digester invented by WSU

Name: Zhiwu Wang

Date: Aug 12, 2009