



PARIS_{FRANCE}

Enjoy world-class sightseeing, authentic French cuisine, and a river cruise in the City of Light with WSA! Together, we'll skip the line into the Louvre and Eiffel Tower and explore the Moulin Rouge & Sacre Coeur.

- 3 days, 2 nights in Paris' top hostel
- Skip-the-line **Louvre and Eiffel Tower**
- Visit our favorite Sunday market
- Walk through **Notre Dame, Latin Quarter and Montmartre**
- All local transportation and more!

Guided Trip Only €189 ea, Unguided Detours from €189! Dates & Details online



PARIS

SUMMARY

We've lined up world-class sightseeing, unforgettable walking tours, an evening river cruise, and amazing nightlife to maximize your time visiting the City of Light. We'll show you our favorite bohemian districts and dive into the art of French cuisine, we'll climb the Eiffel Tower and ponder Mona's smile all with one of our awesome local guides!

INCLUDED

- ✓ 2 nights in top-rated hostel (Fri, Sat) (Opt. Thurs, Sun)
- ✓ Skip-the-line entry into the Louvre and Eiffel Tower (2nd level!)
- ✓ Walking tours of the Latin Quarter & Montmartre
- ✓ Explore Paris' Pantheon, where France's most famous are interred
- ✓ Tour Notre Dame Cathedral and Sacré-Cœur Church
- ✓ Full-time expertise and service of your fun local WSA Paris guide
- ✓ Laid back group of fellow students & backpackers
- ✓ All local group transportation throughout town

NOT INCLUDED/OPTIONS

- ✓ Flights - Meet us at the hostel and we'll take it from there!
- ✓ Evening River Cruise along the Seine (1.5 hrs, €10)
- ✓ Join us at our favorite restaurants for fun, cheap bfast, lunch & dinn.

PACKAGE PRICE: €189

GETTING THERE

Paris is served by a number of airports: **Charles de Gaulle** (CDG), **Orly** (ORY) and the **DISTANT**, budget **Beauvais** (BVA, 2 hours away from Paris). SkyScanner, Google Flights, and Kayak are great flight search engines. Your confirmation e-mail will have all the necessary transfer information to our sweet, central hostel! We recommend arriving Thursday, departing late Sunday afternoon.

CURRENCY

Euro (€) €1: \$1.11 USD

FAQ

Q: Where can I read up on WSA's testimonials?

A: They're all online at WSAEurope.com, please check them out! And we've got 5 stars on TripAdvisor!

Q: How do the group meals work?

A: We've selected our favorite restaurants based on authenticity, budget and ambience. All are welcome to join, or you can branch out on your own.

Q: What if I can't ride a bike?

A: No worries! It's something we include, but don't make anyone join. Our WSA guide will hook you up with alternative options.

WEEKEND BREAKDOWN

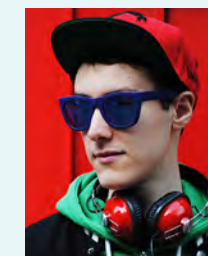
○ THURS/FRI: arrival, check in and settle into hostel

● FRIDAY 5pm: meet up and head to Louvre, with group dinner and local nightlife options

○ SAT: eiffel tower, latin quarter, notre dame, montmartre, moulin rouge, Sacré-Cœur

○ SUN: tearful goodbyes, sunday market and versailles option

MEET YOUR WSA GUIDE



Salut tout le monde! Alex here, and I can't wait to take you to all the cool places real, young Parisians go! I've been guiding for four

years now, and specialize in art and history of course, but also street art, chocolate tours and even cemetery walks. So come out and enjoy the *joie de vivre* Paris is so famous for! *A bien tot*

AMSTERDAM PARIS BARCELONA DUBLIN PRAGUE ROME BUDAPEST KRAKOW REYKJAVIK FLORENCE

== book your trip now at wsaeurope.com!   ==

PRAGUE | AMSTERDAM | ROME | PARIS | REYKJAVIK | DUBLIN | KRAKOW | EDINBURGH | BARCELONA | BUDAPEST

 @WSAEUROPE [WSAEUROPE.COM](https://wsaeurope.com)  @WSAEUROPE