

Paul G. Allen Center for Computer Science & Engineering

Join us for the
Dedication and Open House
October 9, 1:30 to 4 pm



Karen Orders, University of Washington

"The technology community recognizes that University of Washington Computer Science & Engineering is an important asset. This project is a wonderful example of the private community working with a great public institution to accomplish a significant goal."

Tom Alberg
Madrona Venture Group
CSE Campaign Co-chair

Support for the Paul G. Allen Center

- \$42 million private
- \$20 million UW
- \$10 million state funding
- 10 private donations of \$1 million or more
- 75 additional donations of \$25,000 or more
- More than 250 donations in total

College of Engineering



Section Editor: Sandra Marvinney
UW College of Engineering



Mary Levin, University of Washington

At a reception honoring their contributions to the new CSE building, Paul Allen and Bill Gates share tales of their youthful exploits on UW computers. L to R: Dean of Engineering Denise Denton, UW Regent Ark Chin, Governor Gary Locke, Bill Gates, Paul Allen, and Professor Ed Lazowska.

A Salute to Our Supporters

A building dedication is a celebration of completion and of anticipation for the future. When the doors open for the October 9 dedication of the Paul G. Allen Center for Computer Science & Engineering, the celebration will be rousing on both counts. After four years of design, fundraising, and construction, this state-of-the-art facility for Computer Science & Engineering has finished on time and on budget.

The department, the College of Engineering, and the University of Washington will celebrate the completion of the \$72 million project and salute the many friends and alumni who laid the foundation for this success. Private donations contributed \$42 million of the total funding, including leadership gifts of \$14 million from Paul G. Allen, \$7.2 million from Microsoft Corporation, and \$6.5 million from the Bill & Melinda Gates Foundation. Seven additional gifts of \$1 million or more were received, and more than 250 donors in total contributed to the campaign, which was led by Tom Alberg, managing director of Madrona Venture Group, Jeremy Jaech, CSE alumnus and co-founder of Aldus and Visio, and faculty member and Bill & Melinda Gates Chair Ed Lazowska.

"Our friends and alumni recognize the importance of having a top computer science program in the region," said David Notkin, Bradley Professor and department chair. "The support we have received is incredibly gratifying. We are so proud to celebrate a public/private partnership that is unprecedented in UW history."

Major categories of donors include department alumni, friends in the state's technology industry, and venture capitalists who recognize CSE's significant role as a catalyst for startup companies and as a source of superbly trained graduates for staffing. Corporations such as Microsoft, Intel, and Dell also have made significant in-kind equipment and software donations.

As one of the nation's top 10 computer science and computer engineering programs, the combination of exceptional faculty, great students, dedicated staff, and now a building worthy of the twenty-first century, bodes well for the future. "The computer science field is exploding in importance, and student demand and intellectual opportunity are greater than ever," Lazowska said. "This wonderful new building is the tool we need, not just to remain competitive, but to reach our full potential."

Computer Science & Engineering ~ The Journey from 1967 to 2003

CSE Buildings

In the beginning . . . was **Roberts Hall** in the southeast corner of campus, CSE's home from 1967 to 1975.



Sieg Hall
Home from 1975 to 2003, prime central campus location and rallying ground for 1970's era antiwar protests The building was dispersed nationwide as prospective grad students took home "a piece of the rock."



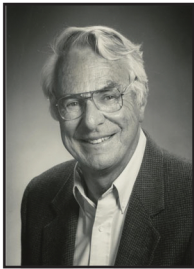
Paul G. Allen Center for Computer Science & Engineering

CSE's home for the 21st century ~ Dedication Ceremony October 9, 2003



Karen Orders, University of Washington

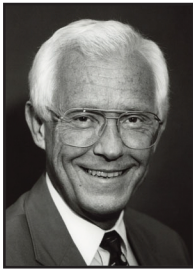
CSE Leaders



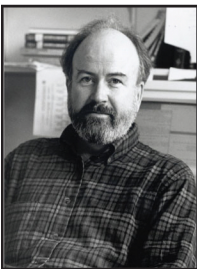
Jerre Noe
1968–1976



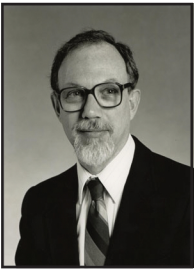
Hellmut Golde
1976–1977



Bob Ritchie
1977–1983



Paul Young
1983–1988



Jean-Loup Baer
1988–1993



Ed Lazowska
1993–2001



David Notkin
2001–

1967

1967– Computer Science Group formed; M.S. & Ph.D. programs approved.

1973

1974 – CSE achieves department status.

1975 – B.S. program approved; move to Sieg Hall.

1983

1982 – National Academies rank CSE program among nation's top 10.

1989 – CSE moves to College of Engineering and adds computer engineering undergraduate program.

1993

1996 – Professional Masters Program added to degree offerings.

2003

2003 – Dedication of the Paul G. Allen Center for Computer Science & Engineering.

The Computer Revolution



From the late 1960s to early 1970s, the UW Academic Computer Center had a Control Data Corporation (CDC) 6400 computer (similar to the model at left), programmed by punch cards and featuring 10MHz clock speed. Around the time of the move to Sieg Hall in the mid-1970s, CSE had its own Xerox Data Systems (XDS) Sigma 5 like the model shown above.



In 1979 CSE acquired an early VAX-11/780 like the model at left. Shortly thereafter CSE acquired a DECsystem 2060 (above), a powerful system for its day.



A grad student in the early 1980s works on the Eden Node Machine, a multiprocessor with several Intel iAPX-432 processors. CSE built prototypes of personal workstations under the first National Science Foundation grant to create a "building-sized computer" from a federation of personal workstations.



The HP/Compaq is the most common tablet PC used by faculty and students today.

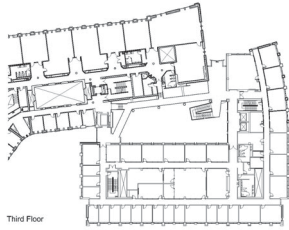
"The Paul G. Allen Center is a world-class facility for an outstanding computer science and engineering program. It will further the excellence that is an essential cornerstone of our region's growth and leadership in the information technology sector."

Rob Short
Microsoft Corporate Vice President,
UW CSE Alumnus, and Allen Center Donor

The Allen Center ~ Dream to Reality ~

July 1999

LMN Architects begin
design development



May 2000

Fundraising launched

June 2001

Demolition of old EE building

October 2001

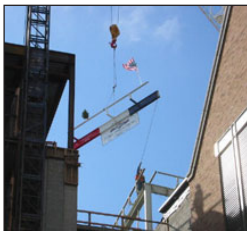
Construction begins

February 2002

Naming gift received
from Paul G. Allen

October 2002

"Topping Out" of new building
(last piece of structural steel placed)



February 2003

Roof on, windows in, building "closed"

July 2003

Fundraising goal achieved
First phase of move-in



Katherine Ready, UW CSE

September 29, 2003

Doors open for the start of
the academic year

October 9, 2003

Dedication Ceremony

A Peek Inside The Allen Center

*Seven stories
85,000 square feet
Soaring atrium
Spectacular views
State-of-the-art labs
A place for people
A catalyst for innovation
Honoring of history
Reaching for the future*

**Come explore
on October 9!**

Karen Orders, University of Washington



Welcome! A soaring, light-infused, six-story glass atrium invites visitors, students, faculty, and staff into the Paul G. Allen Center for Computer Science & Engineering. The 5,000 square-foot Microsoft Atrium, reaching 100 feet high, is a key architectural element and prime building amenity. A cafe will draw department members during the day, while on evenings and weekends the flexible space can be transformed for conferences, workshops, receptions, and dinners. On four levels open sky bridges connect the atrium to the adjacent Electrical Engineering building to encourage cross-disciplinary interactions.

The Allen Center's seven stories (including basement laboratories) nearly triple the space available to CSE in overcrowded and crumbling Sieg Hall. The atrium, administrative offices and student services spaces comprise the first floor. Floors two through six intermix laboratories, offices, conference rooms, and formal and informal areas for interaction. On the sixth floor, the Bill & Melinda Gates Commons, a meeting and conference area with outdoor terrace, offer sweeping views of Lake Washington and the Cascade Mountains – a fine setting for seminars, meetings, and social events.

Dramatic and contemporary, the Allen Center also is warm, welcoming, and people-oriented with inviting gathering spaces for the sorts of spontaneous exchanges that catalyze great ideas. CSE and UW history are honored by the reproduction of the Steam Powered Turing Machine mural from Sieg Hall, and views from south-side offices onto the Sylvan Grove and the four columns from the original UW building dating to 1861. An eye to the future is evident in the Mobile Robotics and the Real Time Motion Capture laboratories.

"The Allen Center meets all our goals for a twenty-first century facility," said Hank Levy, Microsoft Professor and spearhead of department planning for the building. "We wanted a pleasant, flexible, and efficient working environment to facilitate teaching, learning, collaboration, and experimental research. The fiber and wireless networks so critical to computer work are an integral part of building design. Just as important as these inner elements, the windows are large and they open! Working in a building filled with light and connected to the outside world will be invigorating. We are excited to get in and get to work. The true measure of this building will be what we do inside that takes our programs to the next level of excellence."

The Allen Center design is the work of LMN Architects, the Seattle firm that designed two of the city's most acclaimed cultural facilities, Benaroya Hall and McCaw Hall. The general contractor was M.A. Mortenson.